

Transportation Filtration

Turbine Series Fuel Filter/Water Separator
900FH10 for Motor home

Market Application Publication

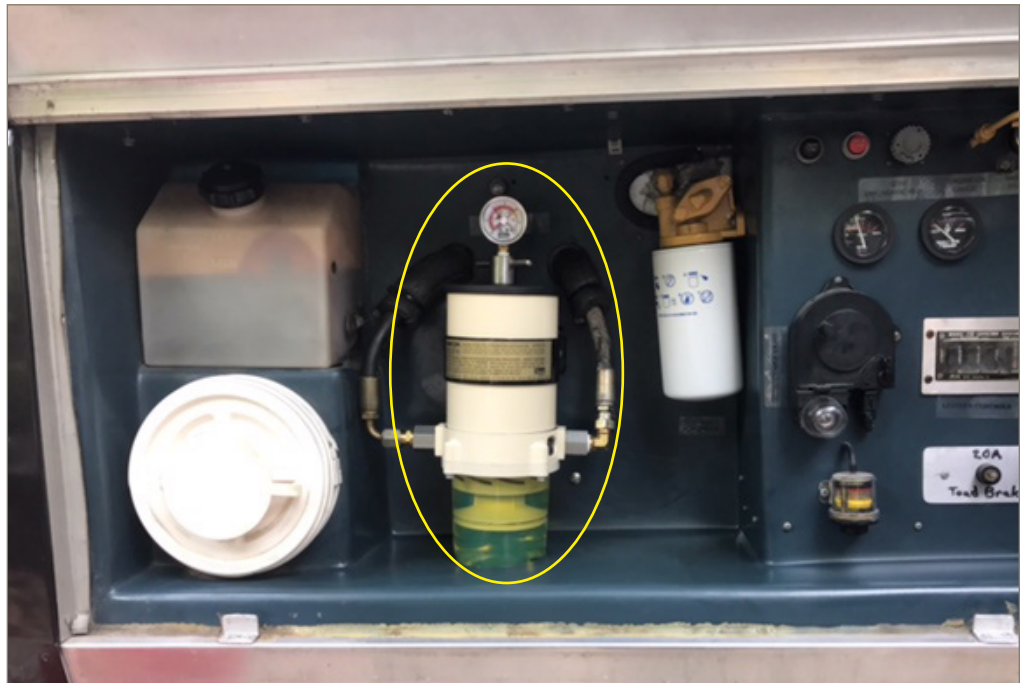


The Challenge

The Motor home owner was experiencing short filter life. Operating conditions required a larger filter.

Why Racor was Chosen as the Solution

The Racor turbine series fuel filter/water separator offers complete, efficient, and reliable engine protection. It provides heavy-duty, high-capacity water separation and fuel filtration. The Aquabloc® Synergy filter media greatly extends filter life while removing asphaltenes, water, gums, and tiny particles of dirt and algae from the diesel fuel.



Contact Information

Parker Hannifin Corporation
Racor Division
3400 Finch Road
Modesto, CA 95353

phone 800 344 3286
209 521 7860

fax 209 529 3278
racor@parker.com

www.parker.com/racor

Racor's Solution

Racor's solution was the 900FH10 turbine series fuel filter/water separator. The 900FH10 extends filter life and gives the customer the ability to see and drain out collected water.

The customer was very pleased with the application and now feels comfortable to take his family on a six week summer vacation across the USA.

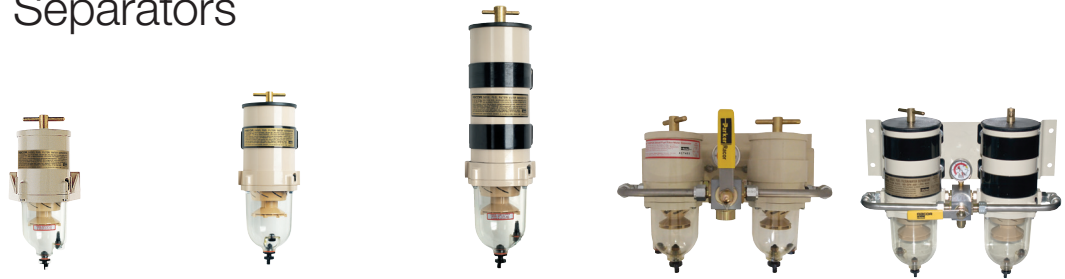
Product Features

- Heavy-duty, high-capacity
- Aquabloc Synergy filter media
- See-thru bowl for visual inspections
- Self-venting drain
- Durable mounting bracket
- 2, 10, 30 micron filters available



ENGINEERING YOUR SUCCESS.

Turbine Series Fuel Filter Water Separators



Model	500FG2 /10 /30	900FH2 /10 /30	1000FH2 /10 /30	75500FGX2 /10 /30	75900FHX2 /10 /30
Max. Flow Rate (One filter on-line) (Two filters on-line)	60 GPH (227 LPH) N/A	90 GPH (341 LPH) N/A	180 GPH (681 LPH) N/A	60 GPH (227 LPH) 120 GPH (454 LPH)	90 GPH (341 LPH) 180 GPH (681 LPH)
Height	11.5 in. (29.2 cm)	17.0 in. (43.2 cm)	22.0 in. (55.9 cm)	11.5 in. (29.2 cm)	17.0 in. (43.2 cm)
Width	5.8 in. (14.7 cm)	6.0 in. (15.2 cm)	6.0 in. (15.2 cm)	14.5 in. (36.8 cm)	18.8 in. (47.8 cm)
Depth	4.8 in. (12.2 cm)	7.0 in. (17.8 cm)	7.0 in. (17.8 cm)	9.5 in. (24.1 cm)	11.0 in. (27.9 cm)
Weight (approx.)	4 lbs (1.8 kg)	6 lbs (2.7 kg)	17 lbs (7.7 kg)	17 lbs (7.7 kg)	23 lbs (10.4 kg)
Port Size (metric optional) ¹	3/4"-16 SAE 16 mm x 1.5	7/8"-14 SAE 22 mm x 1.5	7/8"-14 SAE 22 mm x 1.5	3/4"-16 SAE N/A	7/8"-14 SAE N/A
Clean Pres. Drop	0.3 PSI (0.02 bar)	0.34 PSI (0.02 bar)	0.49 PSI (0.03 bar)	0.70 PSI (0.05 bar)	1.7 PSI (0.12 bar)
Max. Operating Pressure ²	15 PSI (1.03 bar)	15 PSI (1.03 bar)	15 PSI (1.03 bar)	15 PSI (1.03 bar)	15 PSI (1.03 bar)
Replacement Filter	2010 Series	2040 Series	2020 Series	2010 Series	2040 Series
Overhead Clearance	4.0 in. (10.2 cm)	5.0 in. (12.7 cm)	10.0 in. (25.4 cm)	4.0 in. (10.2 cm)	5.0 in. (12.7 cm)
Ambient Temperature Range	-40° to +255°F (-40° to +124°C)				
Maximum Fuel Temperature	190°F (88°C)				

Notes: ¹ Use (*) for metric port threads, i.e. *500FG, *900FH, and *1000FH. ² Vacuum installations are recommended.



Model	731000FH2 /10 /30	751000FHX2 /10 /30	771000FH2 /10 /30	791000FHV2 /10 /30
Max. Flow Rate (One filter on-line) (Two filters on-line) (Three filters on-line)	N/A 360 GPH (1363 LPH) N/A	180 GPH (681 LPH) 360 GPH (1363 LPH) N/A	N/A N/A 540 GPH (2044 LPH)	180 GPH (681 LPH) 360 GPH (1363 LPH) 540 GPH (2044 LPH)
Height	22.0 in. (55.9 cm)	22.0 in. (55.9 cm)	22.0 in. (55.9 cm)	22.0 in. (55.9 cm)
Width	16.5 in. (41.9 cm)	18.0 in. (45.7 cm)	18.0 in. (45.7 cm)	21.5 in. (54.6 cm)
Depth	12.0 in. (30.5 cm)	11.0 in. (27.9 cm)	11.0 in. (27.9 cm)	11.8 in. (30.0 cm)
Weight (approx.)	26 lbs (11.8 kg)	30 lbs (13.6 kg)	39 lbs (17.7 kg)	52 lbs (23.6 kg)
Port Size	3/4"-14 NPT	7/8"-14 SAE	1"-11.5 NPT	3/4"-14 NPT
Clean Pres. Drop	1.7 PSI (0.12 bar)	3.7 PSI (0.26 bar)	1.7 PSI (0.12 bar)	2.5 PSI (0.17 bar)
Max. Operating Pressure ³	15 PSI (1.03 bar)	15 PSI (1.03 bar)	15 PSI (1.03 bar)	15 PSI (1.03 bar)
Replacement Filter	2020 Series	2020 Series	2020 Series	2020 Series
Overhead Clearance	10.0 in. (25.4 cm)	10.0 in. (25.4 cm)	10.0 in. (25.4 cm)	10.0 in. (25.4 cm)
Ambient Temperature Range	-40° to +255°F (-40° to +124°C)			
Maximum Fuel Temperature	190°F (88°C)			

Notes: ² Vacuum installations are recommended.