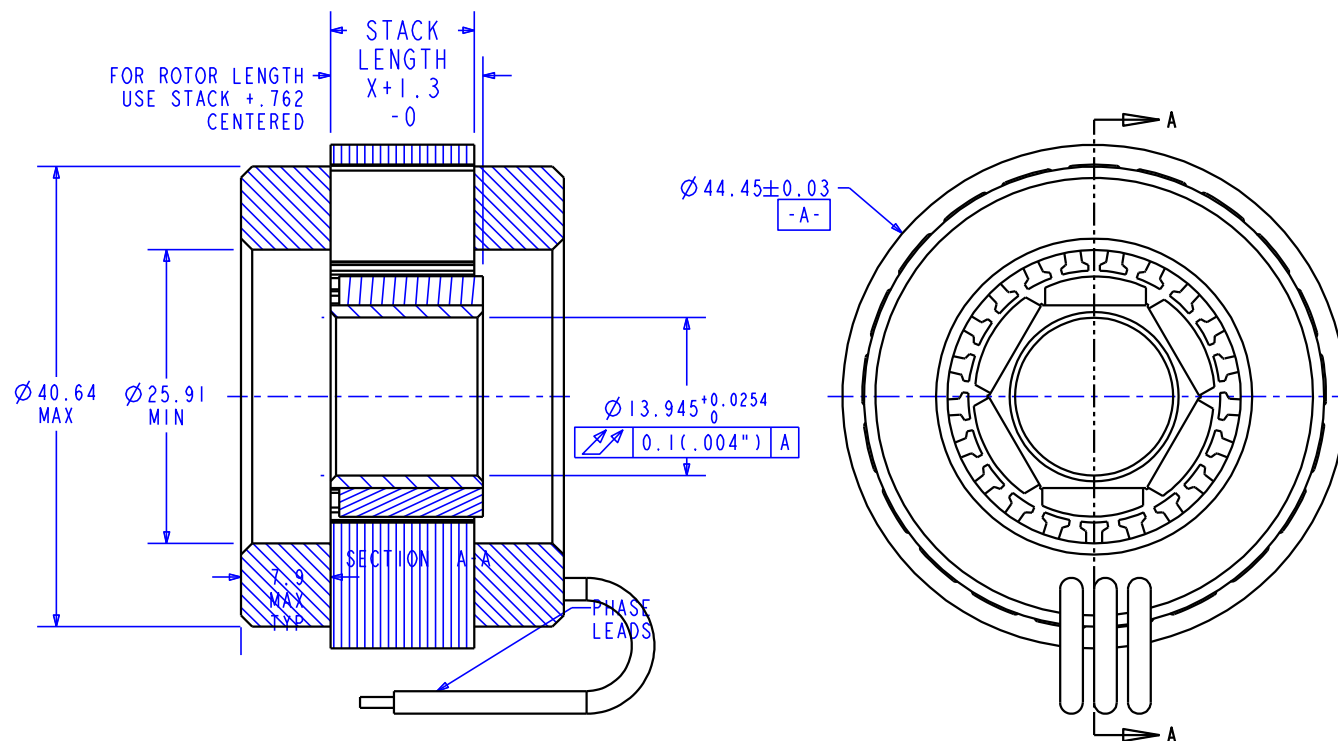


NOTES

1. MOTOR SUPPLIED AS TWO COMPONENTS: ROTOR & STATOR
2. MAXIMUM WINDING TEMPERATURE TO BE 155 °C
3. DIGIT INDICATES THAT WINDING GETS NO INTEGRAL COMMUTATION.

REVISIONS

REV	DESCRIPTION	DATE	APPROVED
A	INITIAL RELEASE	8/10/00	J.DEVERDITS



STACK CODE	STACK LENGTH X
025	6.35
050	12.7
075	19.05
100	25.4
125	31.75
150	38.1
175	44.45
200	50.8
225	57.15
250	63.5
275	69.85
300	76.2
325	82.55
350	88.9
375	95.25
400	101.6

K044 **XXX** - **X** **X** **1**
 MOTOR DESIGNATION STACK CODE WINDING NUMBER CONNECTION SEE NOTE 3

ITEM NO.	QTY REQ'D	DRAWING/ PART NO.	DESCRIPTION	VENDOR	PART NUMBER
1	1	11500XXX	ROTOR ASSEMBLY, GENERIC WITHOUT INTEGRAL COMM.	BAYSIDE	11500XXX
2	1	044XXX-XXI	STATOR, ASSY GENERIC 044, WITHOUT INTEGRAL COMM	BAYSIDE	044XXX-XXI

BAYSIDE MOTION GROUP
 PORT WASHINGTON, NEW YORK, 11050

044 KIT ASSY
 WITHOUT INTEGRAL COMM

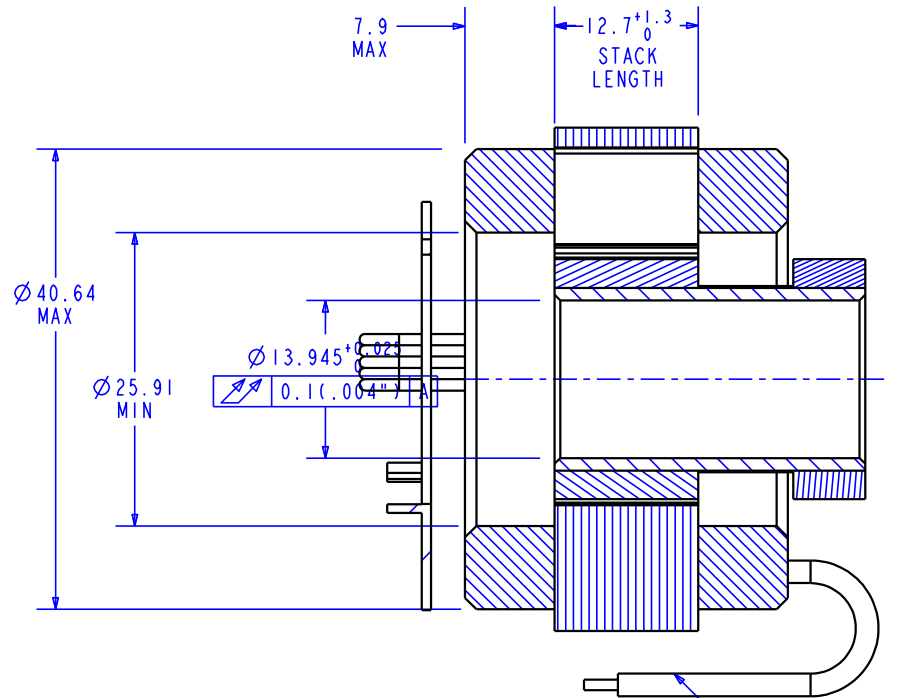
SCALE: 1.500	SHEET: 2 OF 2
SIZE: A	FSCM NO. 96559
DRAWING NO. K044XXX-XXI	REV. A

NOTES

1. MOTOR SUPPLIED AS TWO COMPONENTS: ROTOR & STATOR
2. MAXIMUM WINDING TEMPERATURE TO BE 155 °C
3. DIGIT INDICATES THAT WINDING GETS NO INTEGRAL COMMUTATION.

REVISIONS			
REV	DESCRIPTION	DATE	APPROVED
A	INITIAL RELEASE	8/10/00	J.DEVERDITS

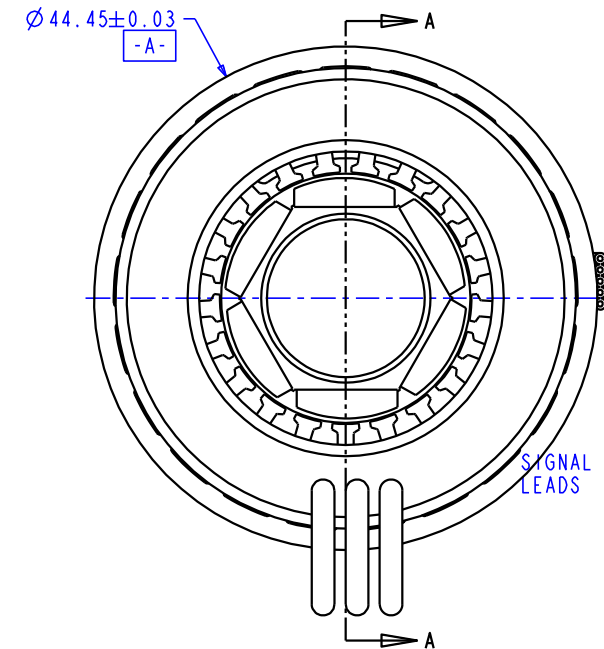
STACK CODE	STACK LENGTH X
025	6.35
050	12.7
075	19.05
100	25.4
125	31.75
150	38.1
175	44.45
200	50.8
225	57.15
250	63.5
275	69.85
300	76.2
325	82.55
350	88.9
375	95.25
400	101.6



K044 **XXX** **X** **X** **2**
 MOTOR DESIGNATION STACK CODE WINDING NUMBER CONNECTION SEE NOTE 3

PHASE LEADS

SECTION A-A



ITEM NO.	QTY REQ'D	DRAWING/PART NO.	DESCRIPTION	VENDOR	PART NUMBER
1	1	12168XXX	ROTOR ASSEMBLY, GENERIC, WITH INTEGRAL COMMUTATION	BAYSIDE	12168XXX
2	1	044XXX-XX2	STATOR, ASSY GENERIC 044, WITH INTEGRAL COMM	BAYSIDE	044XXX-XX2

BAYSIDE MOTION GROUP			
PORT WASHINGTON, NEW YORK, 11050			
044 KIT ASSY WITH INTEGRAL COMM			
SCALE: 1.500	SHEET: 1 OF 2		
SIZE: A	FSCM NO. 96559	DRAWING NO. K044XXX-XX2	REV. A