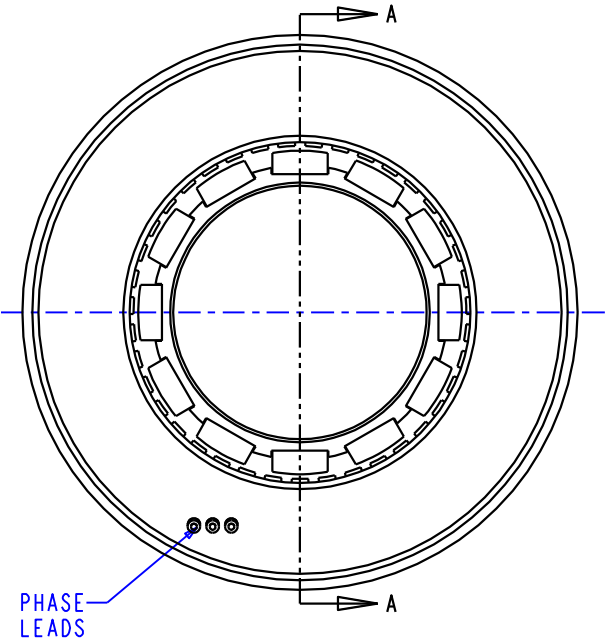
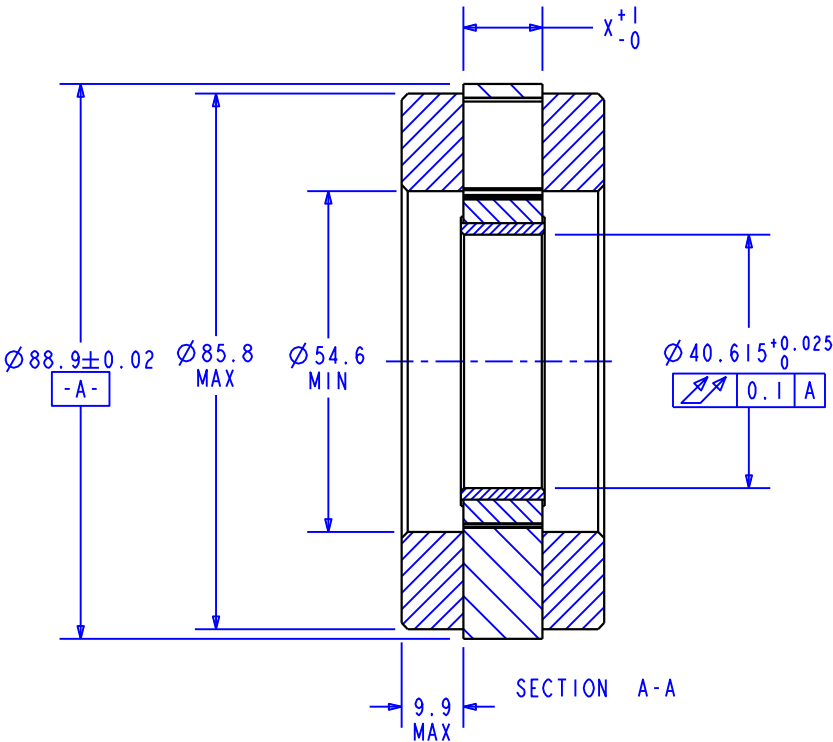


NOTES

DIGIT INDICATES THAT WINDING GETS NO INTEGRAL COMMUTATION.

REVISIONS			
REV	DESCRIPTION	DATE	APPROVED
A	INITIAL RELEASE	9/7/00	J.DEVERDITS

STACK CODE	STACK LENGTH X
025	6.35
050	12.7
075	19.05
100	25.4
125	31.75
150	38.1
175	44.45
200	50.8
225	57.15
250	63.5
275	69.85
300	76.2
325	82.55
350	88.9
375	95.25
400	101.6



K089 **XXX** - **X** **X** **1**

MOTOR
DESIGNATION

STACK
CODE

WINDING
NUMBER

CONNECTION

SEE
NOTE

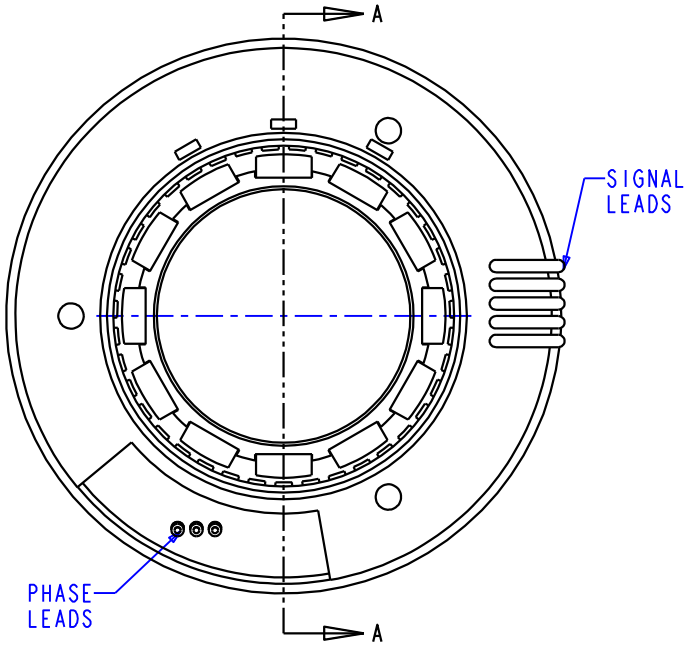
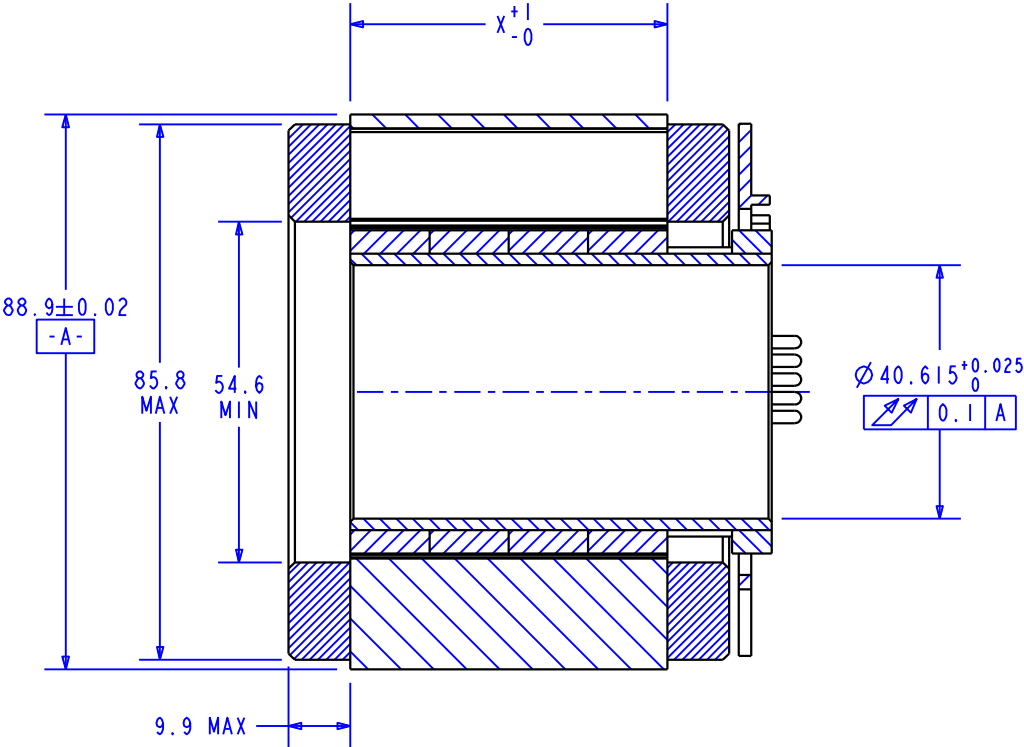
BAYSIDE MOTION GROUP PORT WASHINGTON, NEW YORK, 11050			
089 KIT ASSY WITHOUT INTEGRAL COMM			
SCALE: 0.750		SHEET: 2 OF 2	
SIZE: A	FSCM NO. 96559	DRAWING NO. K089XXX-XXI	REV. A

ITEM NO.	QTY REQ'D	DRAWING/ PART NO.	DESCRIPTION	VENDOR	PART NUMBER
1	1	10154xxx	ROTOR ASSEMBLY, GENERIC WITHOUT INTEGRAL COMM.	BAYSIDE	10154xxx
2	1	089xxx-xx1	STATOR, ASSY GENERIC 089, WITHOUT INTEGRAL COMM	BAYSIDE	089xxx-xx1

NOTES

DIGIT INDICATES THAT WINDING GETS INTEGRAL COMMUTATION.

REVISIONS			
REV	DESCRIPTION	DATE	APPROVED
A	INITIAL RELEASE	9/7/00	J.DEVERDITS



SECTION A-A

STACK CODE	STACK LENGTH X
025	6.35
050	12.7
075	19.05
100	25.4
125	31.75
150	38.1
175	44.45
200	50.8
225	57.15
250	63.5
275	69.85
300	76.2
325	82.55
350	88.9
375	95.25
400	101.6

K089 **XXX** - **X** **X** **2**
MOTOR DESIGNATION STACK CODE WINDING NUMBER CONNECTION SEE NOTE

BAYSIDE MOTION GROUP			
PORT WASHINGTON, NEW YORK, 11050			
089 KIT ASSY WITH INTEGRAL COMM			
SCALE: 0.750		SHEET: 1 OF 2	
SIZE: A	FSCM NO. 96559	DRAWING NO. K089XXX-XX2	REV. A

ITEM NO.	QTY REQ'D	DRAWING/ PART NO.	DESCRIPTION	VENDOR	PART NUMBER
1	1	12176XXX	ROTOR ASSEMBLY, GENERIC , WITH INTEGRAL COMMUTATION	BAYSIDE	12176XXX
2	1	089XXX-XX2	STATOR, ASSY GENERIC 089, WITH INTEGRAL COMM	BAYSIDE	089XXX-XX2