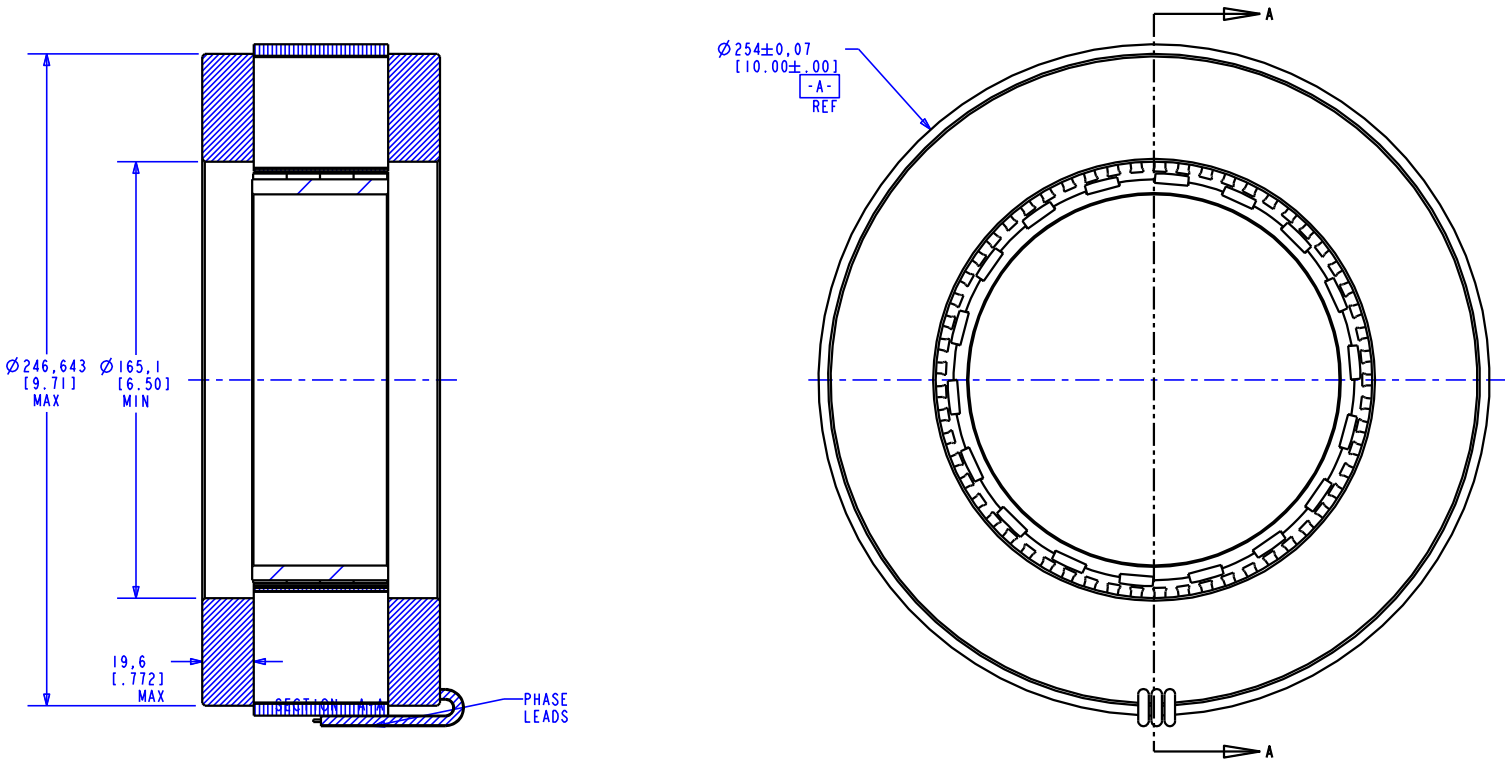


NOTES

- 1. MOTOR SUPPLIED AS TWO COMPONENTS: ROTOR & STATOR
- 2. MAXIMUM WINDING TEMPERATURE TO BE 155 °C
- 3. DIGIT INDICATES THAT WINDING GETS NO INTEGRAL COMMUTATION

REVISIONS			
REV	DESCRIPTION	DATE	APPROVED
A	INITIAL RELEASE	9/18/00	J.DEVERDITS



STACK CODE	STACK LENGTH X
050	12.7
100	25.4
150	38.1
200	50.8
250	63.5
300	76.2
350	88.9
400	101.6

**K254**      **XXX**      -      **X**      **X**      **1**  
MOTOR      STACK      WINDING      CONNECTION      SEE  
DESIGNATION      CODE      NUMBER           NOTE

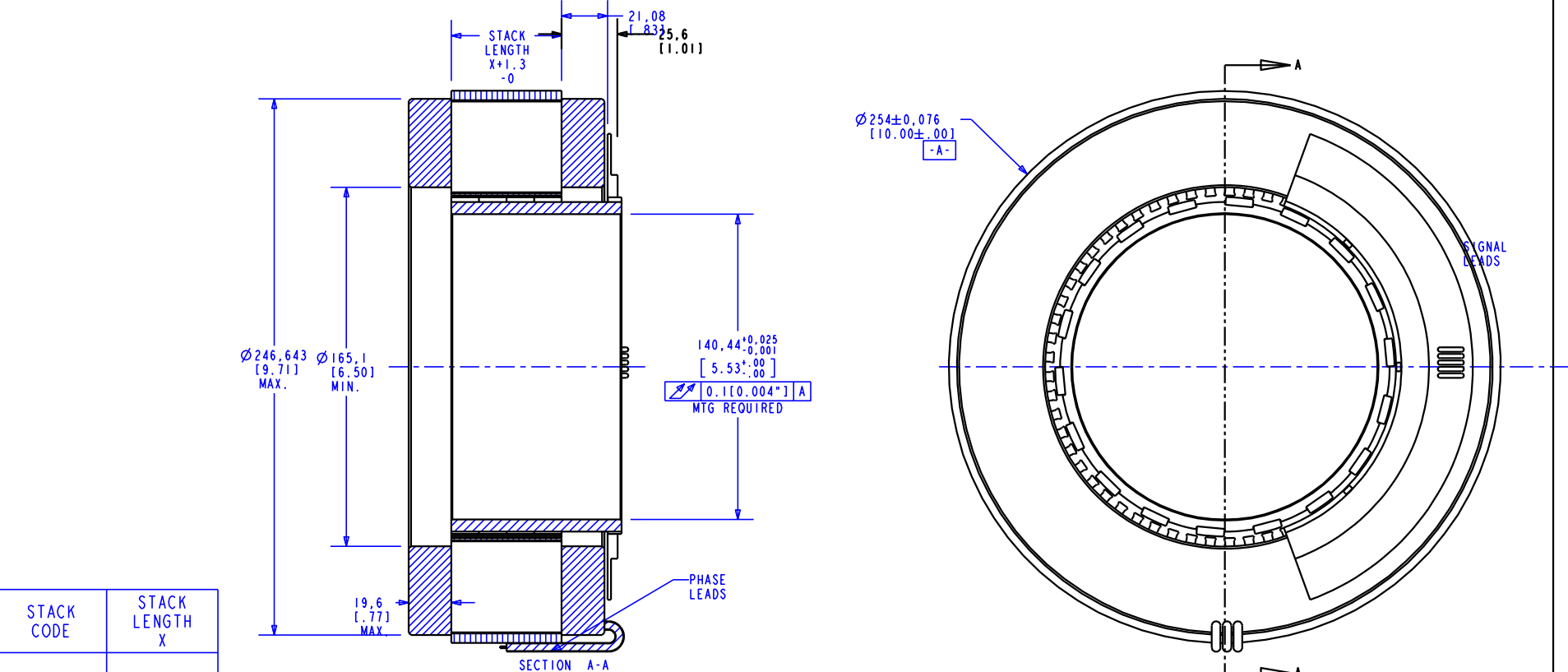
ITEM NO.	QTY REQ'D	DRAWING/ PART NO.	DESCRIPTION	VENDOR	PART NUMBER
1	1	10178005	254 ROTOR ASSY, NO INTEGRAL COMMUTATION	BAYSIDE	10178005
2	1	254XXX-XXI-XXX	254 STATOR ASSY	BAYSIDE	254XXX-XXI-XXX

BAYSIDE MOTION GROUP PORT WASHINGTON, NEW YORK, 11050			
254 KIT ASSY WITHOUT INTEGRAL COMM			
SCALE: 0.350	SHEET: 1 OF 2		REV. A
SIZE: A	FSCM NO. 96559	DRAWING NO. K254XXX-XXI	REV. A

NOTES

1. MOTOR SUPPLIED AS TWO COMPONENTS: ROTOR & STATOR  
2. MAXIMUM WINDING TEMPERATURE TO BE 155 °C  
3. DIGIT INDICATES THAT WINDING GETS INTEGRAL COMMUTATION

REVISIONS			
REV	DESCRIPTION	DATE	APPROVED
A	INITIAL RELEASE	9/18/00	J.DEVERDITS



STACK CODE	STACK LENGTH X
050	12.7
100	25.4
150	38.1
200	50.8
250	63.5
300	76.2
350	88.9
400	101.6

**K254**   **XXX**   -   **X**   **X**   **2**  
MOTOR DESIGNATION   STACK CODE   WINDING NUMBER   CONNECTION   SEE NOTE

ITEM NO.	QTY REQ'D	DRAWING/ PART NO.	DESCRIPTION	VENDOR	PART NUMBER
1	1	12215XXX	254 ROTOR ASSY, INTEGRAL COMMUTATION	BAYSIDE	12215XXX
2	1	254XXX-XX2-XXX	254 STATOR ASSY	BAYSIDE	254XXX-XX2-XXX

BAYSIDE MOTION GROUP PORT WASHINGTON, NEW YORK, 11050			
254 KIT ASSY. WITH INTEGRAL COMM.			
SCALE: 0.350		SHEET: 2 OF 2	
SIZE: A	FSCM NO. 96559	DRAWING NO. K254XXX-XX2	REV. A