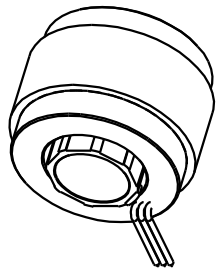
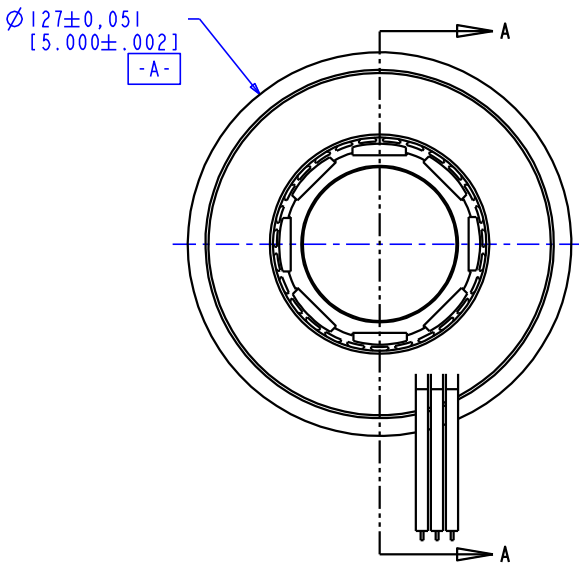
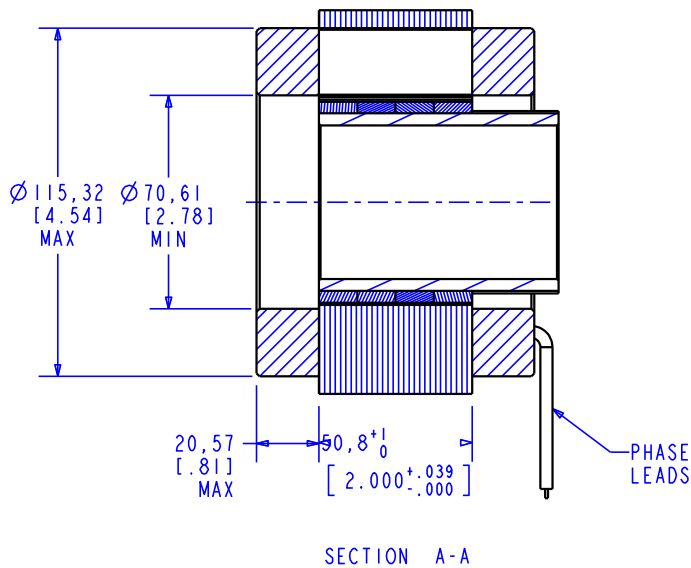


NOTES

- 1. MOTOR SUPPLIED AS TWO COMPONENTS: ROTOR & STATOR
- 2. MAXIMUM WINDING TEMPERATURE TO BE 155 °C
- 3. DIGIT INDICATES THAT WINDING GETS NO INTEGRAL COMMUTATION

REVISIONS			
REV	DESCRIPTION	DATE	APPROVED
A	INITIAL RELEASE	9/1/00	J.DEVERDIDTS

STACK CODE	STACK LENGTH X
025	6.35
050	12.7
075	19.05
100	25.4
125	31.75
150	38.1
175	44.45
200	50.8
225	57.15
250	63.5
275	69.85
300	76.2
325	82.55
350	88.9
375	95.25
400	101.6



SCALE 0.200

ITEM NO.	QTY REQ'D	DRAWING/ PART NO.	DESCRIPTION	VENDOR	PART NUMBER
1	1	11498XXX	500 ROTOR ASSY, 8 POLE	BAYSIDE	11498XXX
2	1	500XXX-XXX-XX1	500 FRAME SIZE STATOR ASSY, 8 POLE	BAYSIDE	500XXX-XXX-XX1

BAYSIDE MOTION GROUP			
PORT WASHINGTON, NEW YORK, 11050			
500 KIT ASSY			
WITHOUT INTEGRAL COMM			
SCALE: 0.400		SHEET: 1 OF 2	
SIZE: A	FSCM NO. 96559	DRAWING NO. K500XXX-XXX-XX1	REV. A

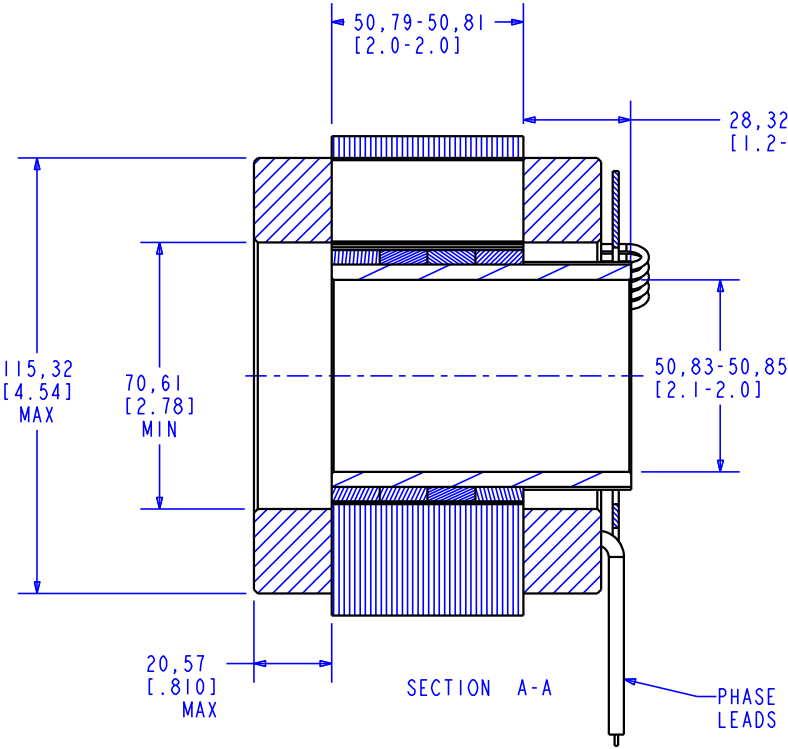
NOTES

- 1. MOTOR SUPPLIED AS TWO COMPONENTS: ROTOR & STATOR
- 2. MAXIMUM WINDING TEMPERATURE TO BE 155 °C
- 3. DIGIT INDICATES THAT WINDING GETS INTEGRAL COMMUTATION.

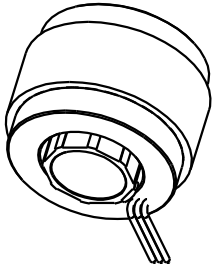
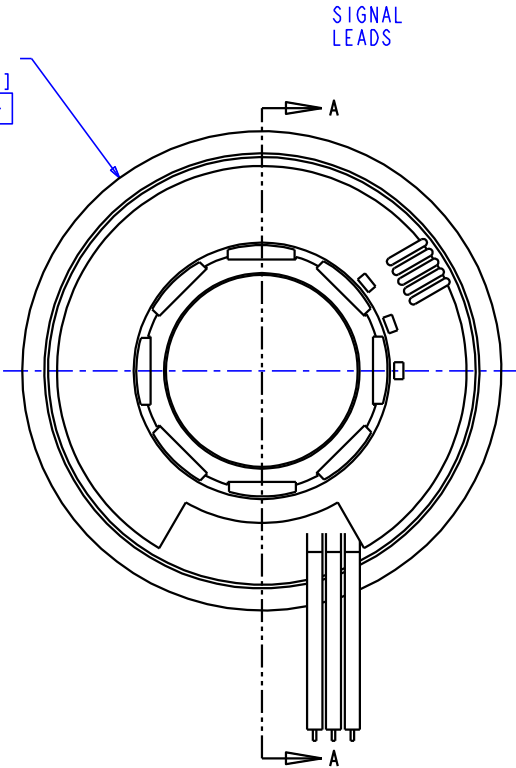
REVISIONS			
REV	DESCRIPTION	DATE	APPROVED
A	INITIAL RELEASE	9/1/00	J.DEVERDITS

STACK CODE	STACK LENGTH X
025	6.35
050	12.7
075	19.05
100	25.4
125	31.75
150	38.1
175	44.45
200	50.8
225	57.15
250	63.5
275	69.85
300	76.2
325	82.55
350	88.9
375	95.25
400	101.6

ITEM NO.	QTY REQ'D	DRAWING/ PART NO.	DESCRIPTION	VENDOR	PART NUMBER
1	1	12219XXX	500 ROTOR ASSY, 8 POLE	BAYSIDE	12219XXX
2	1	500XXX-XXX-XX2	500 FRAME SIZE STATOR ASSY, 8 POLE	BAYSIDE	500xxx-xxx-xx2



Ø 127±0.05
[5.0000±.0019]
-A-



SCALE 0.200

BAYSIDE MOTION GROUP PORT WASHINGTON, NEW YORK, 11050			
500 KIT ASSY WITH INTEGRAL COMM			
SCALE: 0.500	SHEET: 2 OF 2		REV. A
SIZE: A	FSCM NO. 96559	DRAWING NO. K500XXX-XXX-XX2	REV. A