

Mounting Flange EMI Gaskets

MOUNTING FLANGE EMI GASKETS

Parker Chomerics die-cut CHO-SEAL gaskets provide EMI shielding and environmental sealing when inserted between a connector flange and a mounting bulkhead. The gaskets described in this section are designed for use with MIL-C-83723, MIL-C-5015, MIL-C-26482, MIL-C-38999 and MIL-C-81511 connectors. They are interchangeable with non-conductive gaskets.

In addition to standard sizes and configurations listed in Table 1, connector gaskets and ground planes can be custom designed.



Contact Information:

Parker Hannifin Corporation
Chomerics Division
77 Dragon Court
Woburn, MA 01801

phone 781 935 4850
fax 781 933 4318
chomailbox@parker.com

www.chomerics.com
www.parker.com/chomerics

ORDERING PROCEDURE

Standard Sizes: Using Table 1, construct the appropriate part number as illustrated below. For Custom Gaskets: Drawings must be supplied. Part numbers will be assigned by Parker Chomerics.

Mounting Flange Gasket - Product Information

ORDERING PROCEDURE

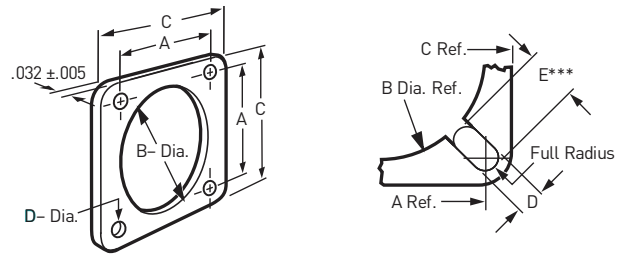
Standard Sizes: Using Table 1, construct the appropriate part number as illustrated below. For Custom Gaskets: Drawings must be supplied. Part numbers will be assigned by Parker Chomerics.

30 - 01 - ZZZZ - XXXXX

Configuration Drawing Number (from Table 1 below)

CHO-SEAL Material

MIL-C-38999 Series III and MIL-C-28840



Note: The radius of each corner is equal to $\frac{C-A}{2}$

Table 1: Mounting Flange EMI Gaskets

Shell Size	Configuration Drawing No. ZZZZ								Dimensions inches (mm)					
	Letter	MIL-C-38999 Series				MIL-C-81511 Series	MIL-C-28840 Series	MIL-C-5015 C-83723 NAS-1599 MIL-C-26482	MIL P/N: M83528/004X-[]	A	B	C	D	E***
		I	II	III	IV					±0.010 (0.25)	+0.020 (0.51) -0.000	±0.015 (0.38)	±0.010 (0.25)	±0.010 (0.25)
6							1946*	001	0.469 (11.91)	0.375 (9.53)	0.738 (18.75)	0.141 (3.58)		
8		1947		√				001	0.594 (15.09)	0.630 (16.00)	0.840 (21.34)	0.135 (3.43)		
						4690		003	0.594 (15.09)	0.568 (14.43)	0.812 (20.62)	0.125 (3.18)		
9		1949	√				1948	004	0.594 (15.09)	0.500 (12.70)	0.875 (22.23)	0.156 (3.96)		
	A	C646			√			NA	0.719 (18.26)	0.750 (19.05)	0.965 (24.51)	0.135 (3.43)	0.222 (5.64)	
10		1949		√				005	0.719 (18.26)	0.750 (19.05)	0.965 (24.51)	0.135 (3.43)		
						4691		006	0.719 (18.26)	0.680 (17.27)	0.937 (23.80)	0.125 (3.18)		
	(S/SL)						1950	007	0.719 (18.26)	0.625 (15.88)	1.000 (25.40)	0.156 (3.96)		
11		6961	√					008	0.812 (20.62)	0.875 (22.23)	1.060 (26.92)	0.141 (3.58)		
	B	C647			√			NA	0.812 (20.62)	0.875 (22.23)	1.060 (26.92)	0.141 (3.58)	0.206 (5.23)	
	A						C637	NA	0.750 (19.05)	0.875 (22.23)	1.046 (26.57)	0.141 (3.58)	0.163 (4.14)	
12		6961		√				008	0.812 (20.62)	0.875 (22.23)	1.060 (26.92)	0.141 (3.58)		
	(S/SL)						1951	009	0.813 (20.65)	0.750 (19.05)	1.094 (27.79)	0.156 (3.96)		
13		1953	√					010	0.906 (23.01)	1.005 (25.53)	1.153 (29.29)	0.135 (3.43)		
	C	C648			√			NA	0.906 (23.01)	1.000 (25.40)	1.156 (29.36)	0.141 (3.58)	0.206 (5.23)	
	B						C638	NA	0.843 (21.41)	1.000 (25.40)	1.156 (29.36)	0.141 (3.58)	0.167 (4.24)	
14		1953		√				010	0.906 (23.01)	1.005 (25.53)	1.153 (29.29)	0.135 (3.43)		
						4692		011	0.906 (23.01)	0.938 (23.83)	1.125 (28.58)	0.125 (3.18)		
	(S)						1952	012	0.906 (23.01)	0.875 (22.23)	1.188 (30.18)	0.156 (3.96)		
15		1955	√					013	0.969 (24.61)	1.135 (28.83)	1.258 (31.95)	0.156 (3.96)		
	D	C649			√			NA	0.969 (24.61)	1.135 (28.83)	1.258 (31.95)	0.156 (3.96)	0.206 (5.23)	
	C						C639	NA	0.968 (24.59)	1.187 (30.15)	1.281 (32.54)	0.141 (3.58)	0.161 (4.09)	

√ Available in series designated.

* Shell size 6 not specified in MIL-C-5015

** Shell size 28-48 specified in MIL-C-5015.

*** For dimension E, hole is slotted through to B diameter.

X should be replaced by applicable MIL-DTL-83528 material type (e.g. A, B, C, etc.).

MIL-DTL-83528 dash number should be inserted (without parentheses) at end of MIL P/N.

Note: Refer to Chomerics Conductive Elastomer EMI Gaskets Molded and Extruded Materials Selector Guide for details.

Mounting Flange Gasket - Product Information

ORDERING PROCEDURE

Standard Sizes: Using Table 1, construct the appropriate part number as illustrated below. For Custom Gaskets: Drawings must be supplied. Part numbers will be assigned by Parker Chomerics.

30 - 01 - ZZZZ - XXXXX
 Configuration Drawing Number Material
 (from Table 1 below)

MIL-C-38999 Series III and MIL-C-28840

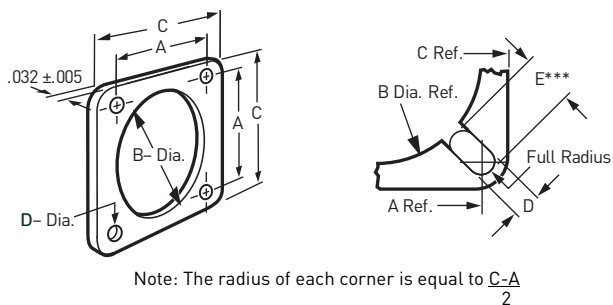


Table 1: Mounting Flange EMI Gaskets *continued*

Shell Size	Configuration Drawing No. ZZZZ								Dimensions inches (mm)				
	Letter	MIL-C-38999 Series				MIL-C-81511 Series	MIL-C-28840 Series	MIL-C-5015 C-83723 NAS-1599 MIL-C-26482	MIL P/N: M83528/004X'-()	A	B	C	D
		I	II	III	IV				±0.010 (0.25)	+0.020 (0.51) -0.000	±0.015 (0.38)	±0.010 (0.25)	±0.010 (0.25)
16		1955		√				013	0.969 (24.61)	1.135 (28.83)	1.258 (31.95)	0.156 (3.96)	
						4693		014	0.969 (24.61)	1.063 (27.00)	1.250 (31.75)	0.125 (3.18)	
	(S)						1954	015	0.969 (24.61)	1.000 (25.40)	1.281 (32.54)	0.156 (3.96)	
17		1957	√					016	1.062 (26.97)	1.260 (32.00)	1.351 (34.32)	0.156 (3.96)	
	E	C650			√			NA	1.062 (26.97)	1.260 (32.00)	1.351 (34.32)	0.156 (3.96)	0.222 (5.64)
	D						C640	NA	1.015 (25.78)	1.250 (31.75)	1.406 (35.71)	0.141 (3.58)	0.163 (4.14)
18	(S)	1957		√				016	1.062 (26.97)	1.260 (32.00)	1.351 (34.32)	0.156 (3.96)	
						4694		017	1.062 (26.97)	1.189 (30.20)	1.343 (34.11)	0.125 (3.18)	
							1956	018	1.062 (26.97)	1.135 (28.83)	1.375 (34.93)	0.156 (3.96)	
19		6962	√					019	1.156 (29.36)	1.375 (34.93)	1.500 (38.10)	0.141 (3.58)	
	F	C651			√			NA	1.156 (29.36)	1.375 (34.93)	1.500 (38.10)	0.141 (3.58)	0.206 (5.23)
	E						C641	NA	1.140 (28.96)	1.437 (36.50)	1.531 (38.89)	0.141 (3.58)	0.158 (4.01)
20		6962						019	1.156 (29.36)	1.375 (34.93)	1.500 (38.10)	0.141 (3.58)	
				√		4695		020	1.156 (29.36)	1.312 (33.32)	1.467 (37.26)	0.125 (3.18)	
							1958	021	1.156 (29.36)	1.250 (31.75)	1.500 (38.10)	0.172 (4.37)	
21		6963	√					022	1.250 (31.75)	1.500 (38.10)	1.625 (41.28)	0.141 (3.58)	
	G	C652			√			NA	1.250 (31.75)	1.500 (38.10)	1.625 (41.28)	0.141 (3.58)	0.206 (5.23)
22		6963		√				022	1.250 (31.75)	1.500 (38.10)	1.625 (41.28)	0.141 (3.58)	
						4696		023	1.250 (31.75)	1.437 (36.50)	1.562 (39.67)	0.125 (3.18)	
							1959	024	1.250 (31.75)	1.375 (34.93)	1.625 (41.28)	0.172 (4.37)	
23		6964	√					025	1.375 (34.93)	1.625 (41.28)	1.750 (44.45)	0.172 (4.37)	
	H	C653			√			NA	1.375 (34.93)	1.625 (41.28)	1.750 (44.45)	0.172 (4.37)	0.259 (6.58)
	F						C642	NA	1.281 (32.54)	1.625 (41.28)	1.750 (44.45)	0.141 (3.58)	0.164 (4.17)

√ Available in series designated.

* Shell size 6 not specified in MIL-C-5015

** Shell size 28-48 specified in MIL-C-5015.

*** For dimension E, hole is slotted through to B diameter.

*"X" should be replaced by applicable MIL-DTL-83528 material type (e.g. A, B, C, etc.).

MIL-DTL-83528 dash number should be inserted (without parentheses) at end of MIL P/N.

Note: Refer to Chomerics Conductive Elastomer EMI Gaskets Molded and Extruded Materials Selector Guide for details.

Mounting Flange Gasket - Product Information

ORDERING PROCEDURE

Standard Sizes: Using Table 1, construct the appropriate part number as illustrated below. For Custom Gaskets: Drawings must be supplied. Part numbers will be assigned by Parker Chomerics.

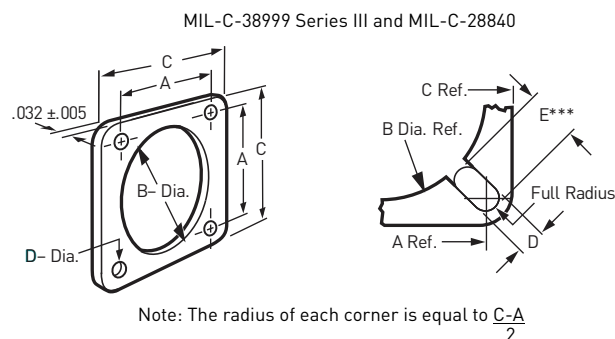
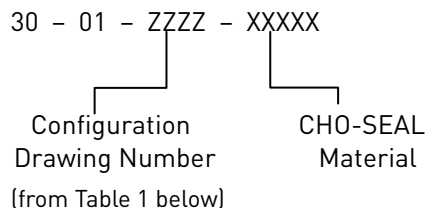


Table 1: Mounting Flange EMI Gaskets *continued*

Shell Size		Configuration Drawing No. ZZZZ							Dimensions inches (mm)					
No	Letter	MIL-C-38999 Series				MIL-C-81511 Series	MIL-C-28840 Series	MIL-C-5015 C-83723 NAS-1599 MIL-C-26482	MIL P/N: M83528/004X [†] (-)	A	B	C	D	E***
		I	II	III	IV					±0.010 [0.25]	+0.020 [0.51] -0.000	±0.015 [0.38]	±0.010 [0.25]	±0.010 [0.25]
24		6964		√				025	1.375 (34.93)	1.625 (41.28)	1.750 (44.45)	0.172 (4.37)		
						4697		026	1.375 (34.93)	1.563 (39.710)	1.703 (43.26)	0.152 (3.86)		
							1960	027	1.375 (34.93)	1.500 (38.10)	1.750 (44.45)	0.203 (5.16)		
25		6965	√					028	1.500 (38.10)	1.750 (44.45)	1.875 (47.63)	0.172 (4.37)		
	J	C654			√			NA	1.500 (38.10)	1.750 (44.45)	1.875 (47.63)	0.172 (4.37)	0.259 (6.58)	
	G						C643	NA	1.392 (35.36)	1.750 (44.45)	1.843 (46.81)	0.172 (4.37)	0.195 (4.95)	
							1961	029	1.562 (39.67)	1.750 (44.45)	2.000 (50.80)	0.203 (5.16)		
29	H						C644	NA	1.568 (39.83)	2.000 (50.80)	2.171 (55.14)	0.172 (4.37)	0.195 (4.95)	
32**								1962	030	1.750 (44.45)	2.000 (50.80)	2.250 (57.15)	0.219 (5.56)	
33	J						C645	NA	1.734 (44.04)	2.187 (55.55)	2.356 (59.84)	0.203 (5.16)	0.234 (5.94)	
36**								1963	031	1.938 (49.23)	2.250 (57.15)	2.500 (63.50)	0.219 (5.56)	
40**								1964	032	2.188 (55.58)	2.500 (63.50)	2.750 (69.85)	0.219 (5.56)	
44**								1965	033	2.375 (60.33)	2.781 (70.64)	3.000 (76.20)	0.219 (5.56)	
48**								1966	034	2.625 (66.68)	3.031 (76.99)	3.250 (82.55)	0.219 (5.56)	

√ Available in series designated.

* Shell size 6 not specified in MIL-C-5015

** Shell size 28-48 specified in MIL-C-5015.

*** For dimension E, hole is slotted through to B diameter.

[†]"X" should be replaced by applicable MIL-DTL-83528 material type (e.g. A, B, C, etc.).

MIL-DTL-83528 dash number should be inserted (without parentheses) at end of MIL P/N.

Note: Refer to Chomerics Conductive Elastomer EMI Gaskets Molded and Extruded Materials Selector Guide for details.

www.chomerics.com
www.parker.com/chomerics

CHOMERICS is a registered trademark of Parker Hannifin Corporation. © 2010

TB 1071 EN April 2012



ENGINEERING YOUR SUCCESS.