

# Picking Fingers

Poultry Processing &  
Product Handling Solutions



## Finger Picking Performance:

Parker has been supplying picking fingers and other specialty products for poultry processing since 1947. With a refined and proven process and more than 25 styles of picking fingers to choose from in various colors and hardness ranges, Parker has the edge in performance and overall product life.

Throughout the process; feather picking, skinning, deboning, and hock and paw removal, our products add value to the entire poultry processing cycle. Key among our offerings is customer service. Our experienced professionals have been trained to quickly and cost-effectively deliver solutions to improve your plant efficiency and boost your bottom line.



Parker Hannifin Corporation  
**O-Ring & Engineered Seals**  
501 South Sycamore Street  
Syracuse, IN 46567

phone 574 528 9400  
fax 574 528 9640

[www.parker.com/oes](http://www.parker.com/oes)

## Product Features:

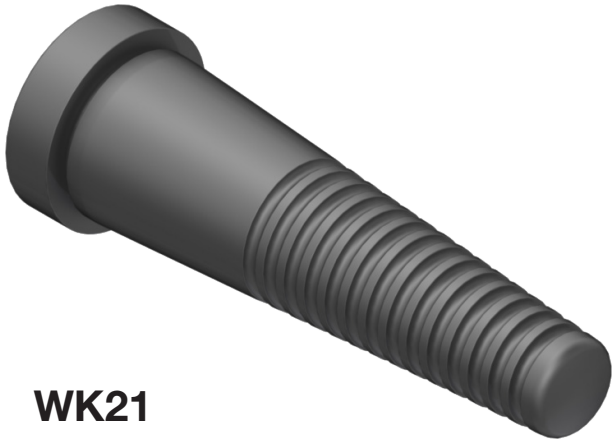
- Seven hardnesses to suit your unique processing needs
- Various colors available
- Cut-to-length customization
- Superior materials
- Made in the USA 

## Benefits:

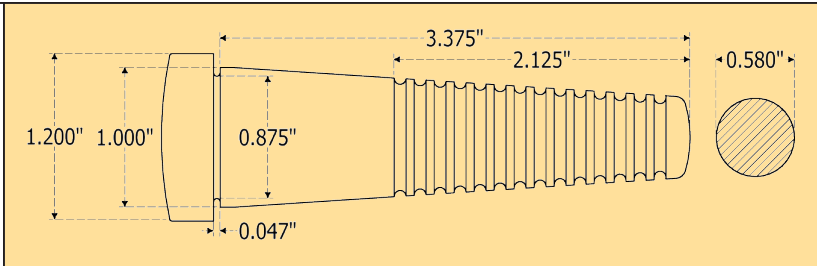
- Multiple applications such as nut harvesting and dethorning
- Long-lasting durability
- FEA design capability for superior function and reduced assembly forces
- Faithfully servicing the industry for over 65 years to ensure stable product availability



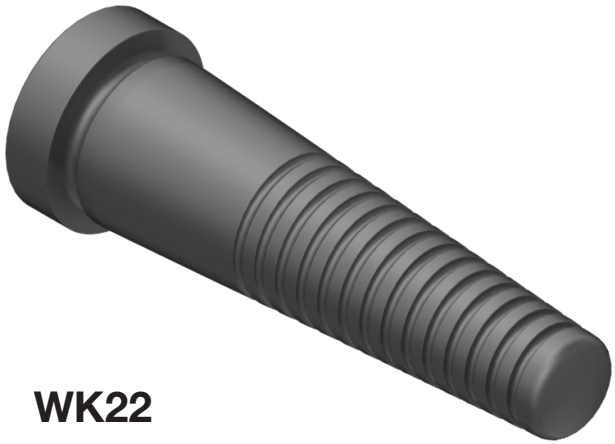
ENGINEERING YOUR SUCCESS.



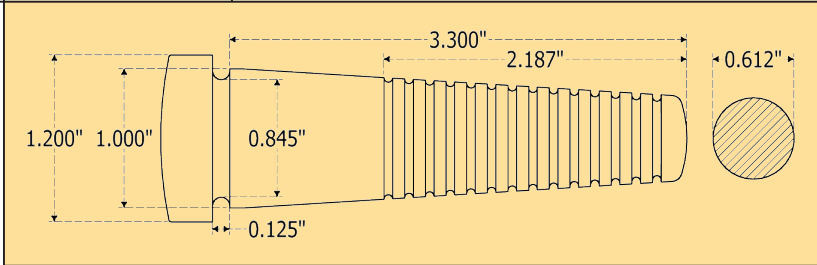
**WK21**



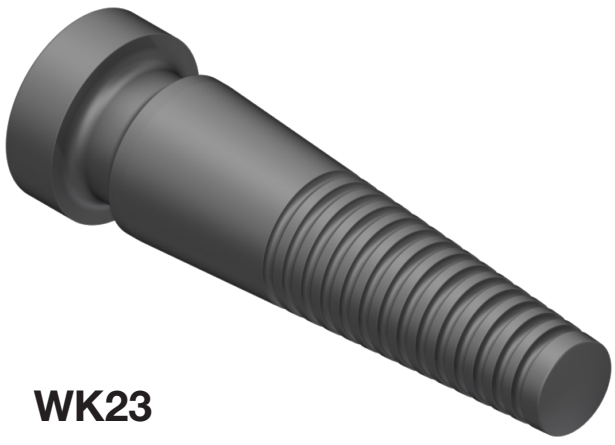
Finger Style	Disc Picker / Paw Picker
Compatibility	Centennial, Gainesville, Peterson
Hardness	E



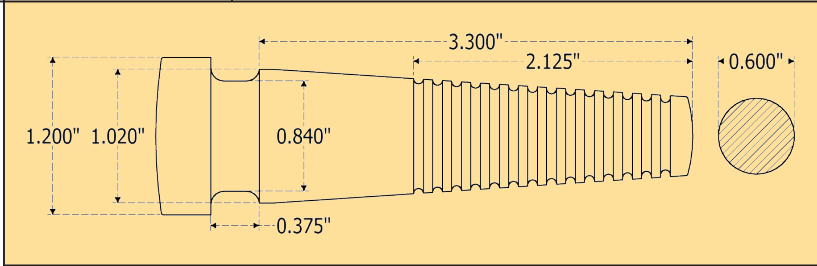
**WK22**



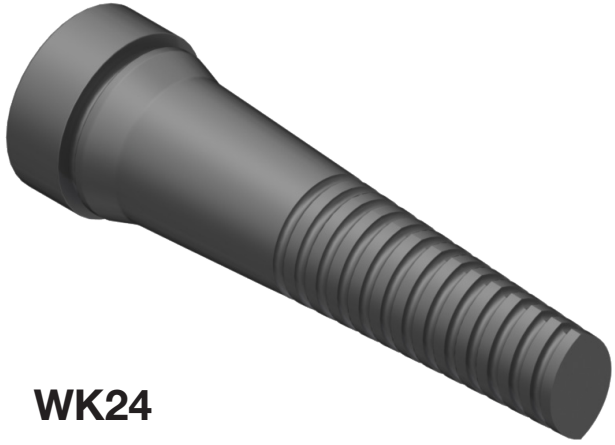
Finger Style	Disc Picker
Compatibility	Johnson Dura I & Dura II
Hardness	B, C, D, E



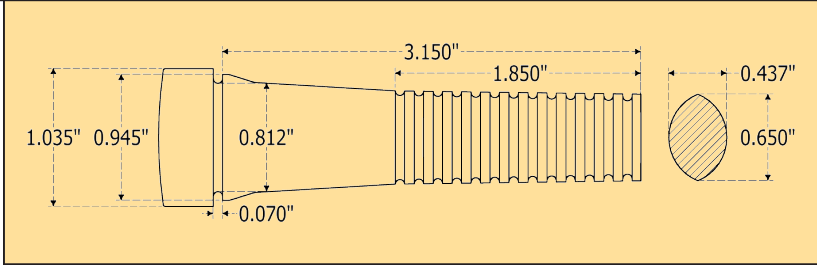
**WK23**



Finger Style	Disc Picker
Compatibility	Barker Gent-L-Flex, Fin Flex VI
Hardness	B, C, D, E



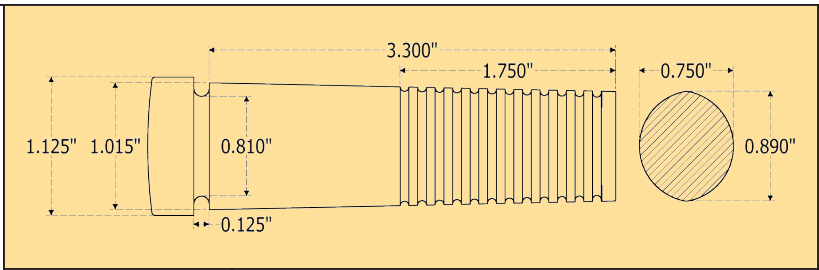
**WK24**



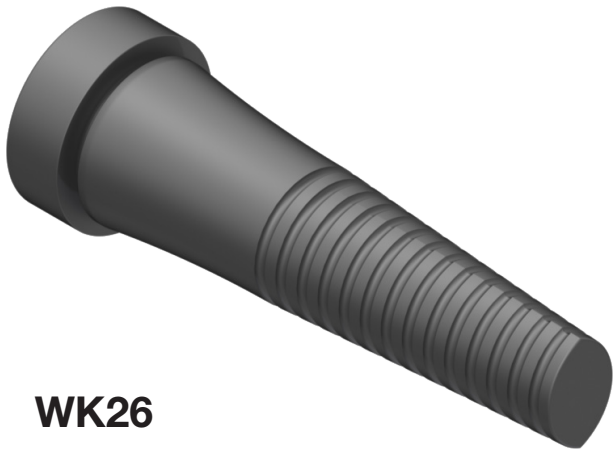
Finger Style	Disc Picker
Compatibility	Meyn, Stork
Hardness	B, C, D, E



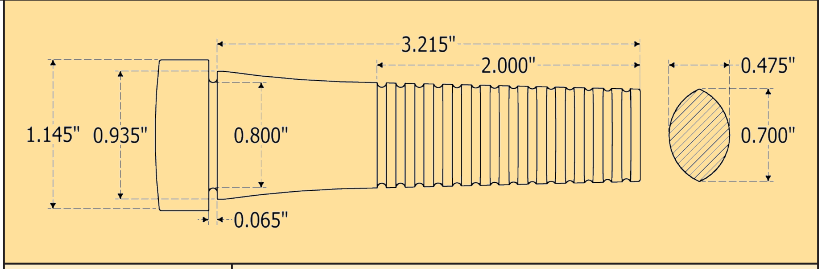
**WK25**



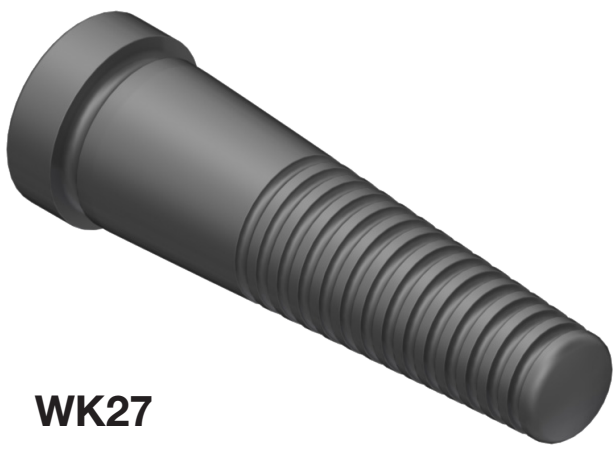
Finger Style	Disc Picker
Compatibility	Johnson Dura I & Dura II, Featherators
Hardness	C, D, E



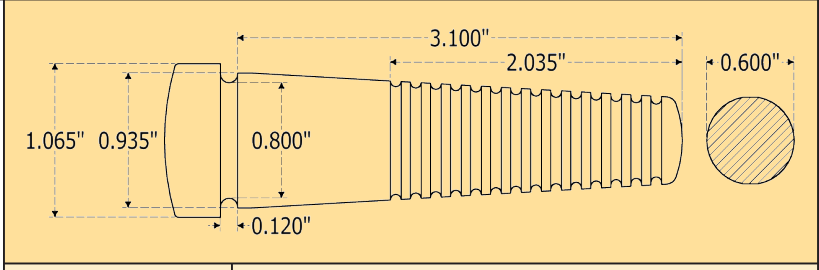
**WK26**



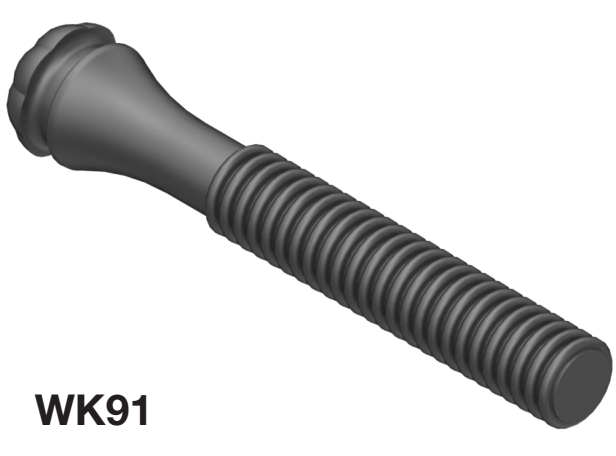
Finger Style	Disc Picker / Paw Picker
Compatibility	Cantrell, D&F, Stork
Hardness	B, C, D, E



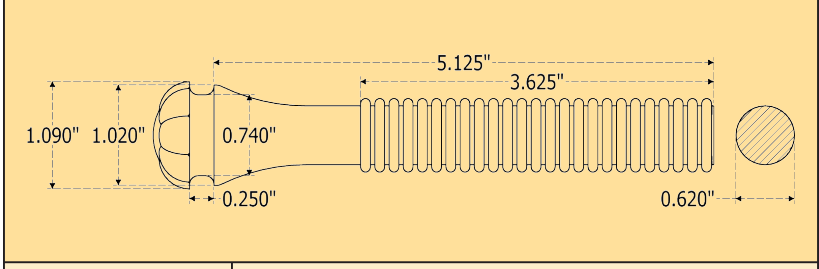
**WK27**



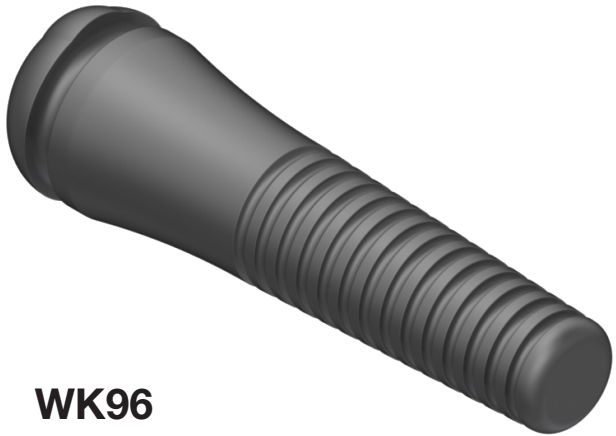
Finger Style	Disc Picker
Compatibility	Linco, Meyn, Stork
Hardness	S, B, C, D, E



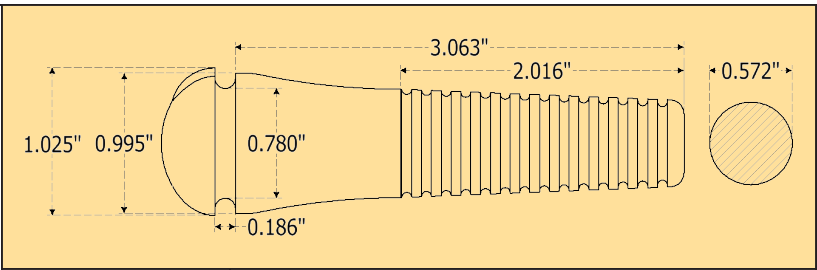
**WK91**



Finger Style	System 90® Style
Compatibility	RP3000
Hardness	B, C



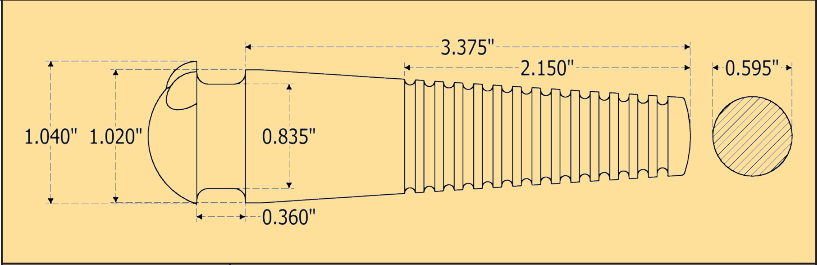
**WK96**



Finger Style	System 90® Style
Compatibility	Johnson (special disk required), Stork V-Belt
Hardness	D, E



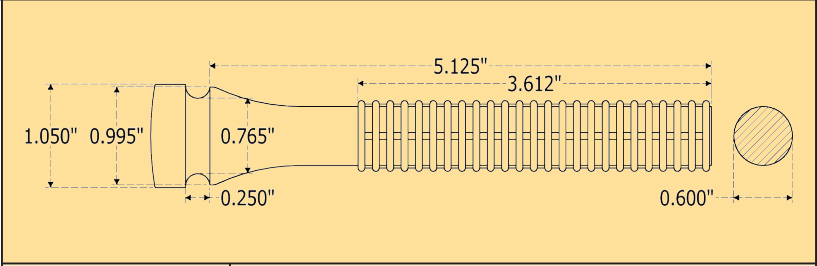
**WK97**



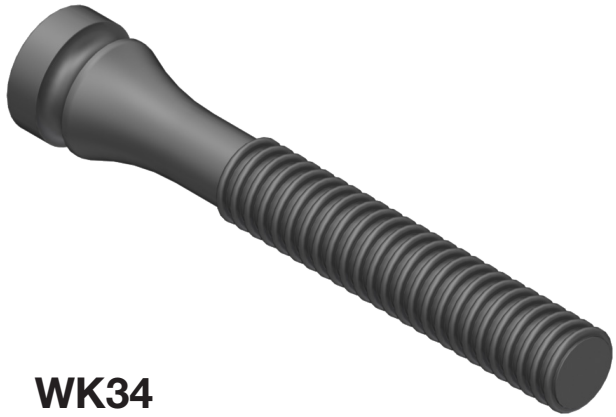
Finger Style	System 90® Style
Compatibility	Barker Gent-L-Flex, Fin Flex VI
Hardness	E



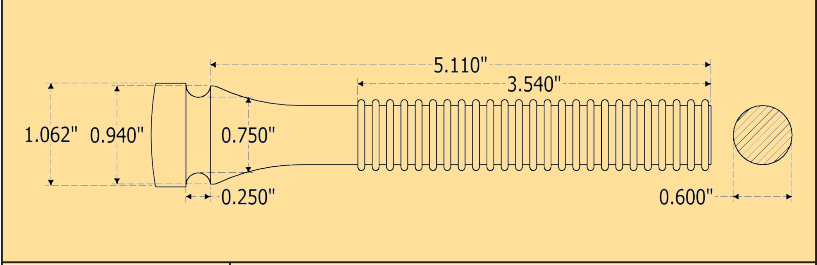
**WK33**



Finger Style	Counter-Rotator
Compatibility	RP3000
Hardness	A



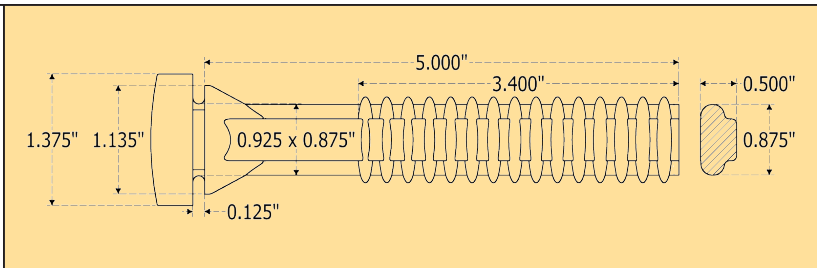
**WK34**



Finger Style	Counter-Rotator
Compatibility	RP3000
Hardness	B, C



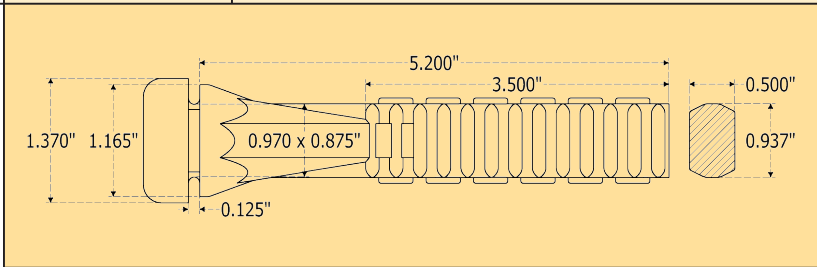
**WK41**



Finger Style	Hock Picker
Compatibility	CR100
Hardness	B



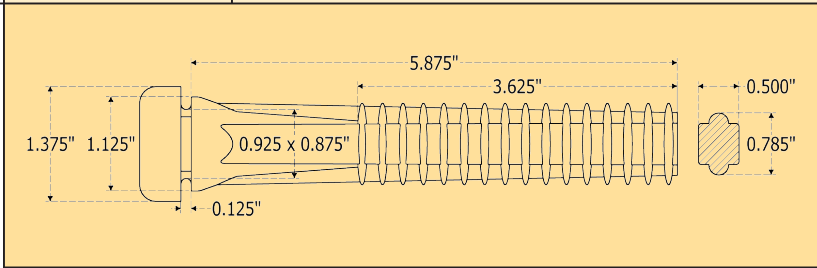
**WK44**



Finger Style	Hock Picker
Compatibility	CR100, Foot Unloaders
Hardness	B, C, D, E



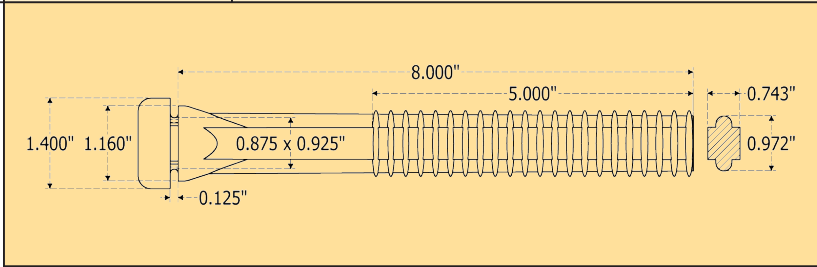
**WK785**



Finger Style	Hock Picker
Compatibility	CR100, Foot Unloaders, Nut Harvesters
Hardness	C, D, E



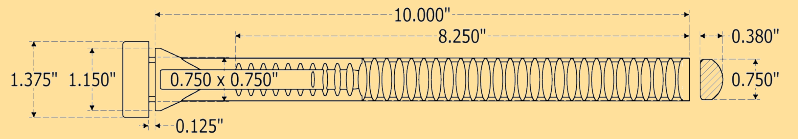
**WK993**



Finger Style	Hock Picker / Wing Picker
Compatibility	B-WP-2, B-WP-3-48, B-WP-3-96
Hardness	C, D, E



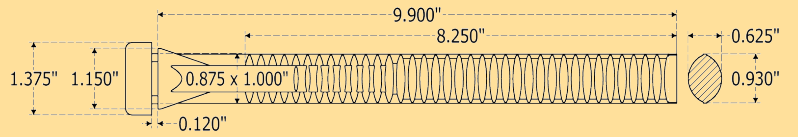
**WK51**



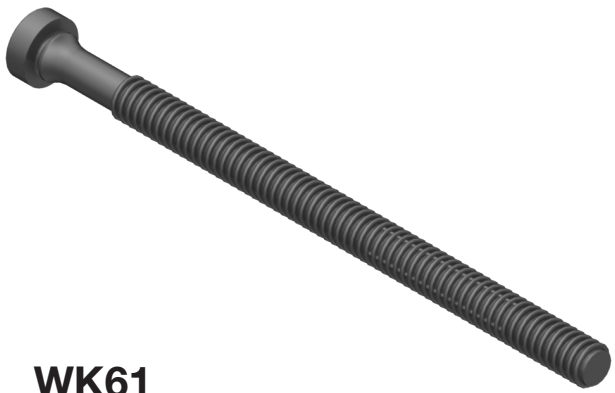
Finger Style	Straddle Picker
Compatibility	Johnson Downstroke, Nut Harvesters
Hardness	C



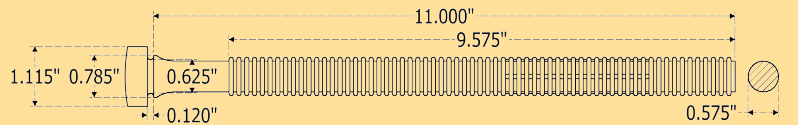
**WK52**



Finger Style	Straddle Picker
Compatibility	Johnson Downstroke, Nut Harvesters
Hardness	B, E, H



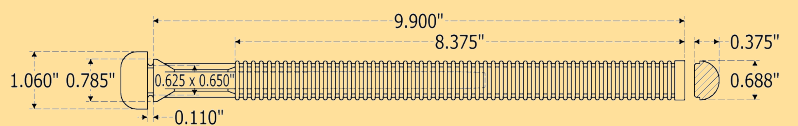
**WK61**



Finger Style	Straddle Picker
Compatibility	Straddle Pickers, Nut Harvesters
Hardness	C



**WK741**



Finger Style	Straddle Picker
Compatibility	Straddle Pickers, Nut Harvesters
Hardness	B

# Reference

Parker Engineered Seals Division offers processing fingers in 7 hardnesses to handle any processing job and ensure a quality product. The table to the right matches Parker ESD finger classes to specific durometer ranges.

The table below shows which Parker finger styles replace those of other popular processing fingers.

Finger Class	Durometer (Hardness)	Color
S	38 - 45	Brown
A	47 - 51	Black/Yellow
B	52 - 55	Black/Yellow
C	56 - 60	Black/Yellow
D	62 - 66	Black/Yellow
E	67 - 72	Black/Yellow
H	75 - 82	Black

Parker ESD	Duram	Goodyear	Pluma Tech	Kent	Portaluppi
WK21	GINA	2020	RL	T-1	133
WK22	MIKA	2070	RL 2 Colour	K-3	847
WK23	302	2030	-	AP-302	-
WK24	ORNA	2040	RL	C-25	-
WK25	KOP	2040	ALCS	AP-1	1320
WK26	MEYDUR	2060	-	G-4	2020N
WK27	DANA	2070	RL	C-25	144
WK33	351	2010	MG	-	-
WK34	351	2010	MG	-	-
WK41	-	-	-	CH-265	2952
WK44	GAINESVILLE	4040	AM	C-65	1466
WK51	TAMI	5010	-	-	1412
WK52	-	-	-	-	-
WK61	IRIS	-	-	-	1818
WK91	301	2010	L	AP-301	-
WK96	-	-	-	-	-
WK97	302	-	-	AP-302	-
WK741	DAFNA	-	-	-	-
WK785	BETTI	-	AMN	-	TV
WK993	-	-	-	-	-

