





### General Description

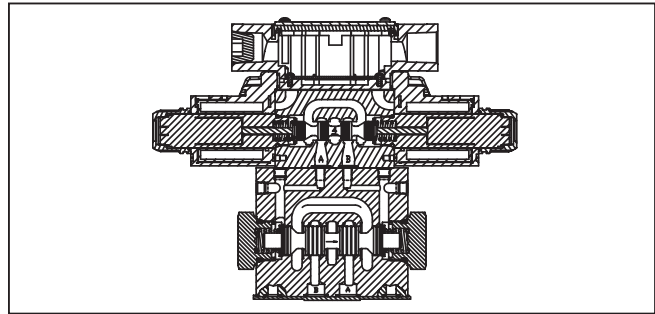
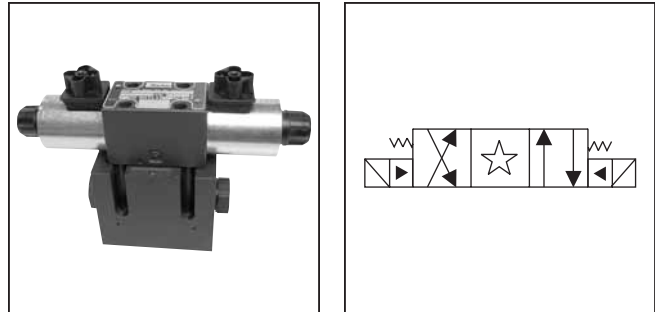
Series D31 directional control valves are 5-chamber, pilot operated, solenoid controlled valves. The valves are suitable for manifold or subplate mounting.

### Features

- **World design** – Available worldwide.
- **Mounting bolts below center line of spool** – Minimizes spool binding.
- **Five chamber style** – Eliminates pressure spikes in tubes, increasing valve life.
- **High pressure and flow ratings** – Increased performance options in a compact valve.

### Specifications

<b>Mounting Pattern</b>	NFPA D05H, CETOP 5 NFPA D05HE, CETOP 5H
<b>Max. Operating Pressure</b>	345 Bar (5000 PSI) Standard 207 Bar (3000 PSI) 10 Watt CSA  207 Bar (3000 PSI)
<b>Max. Tank Line Pressure</b>	Internal Drain Model: 103 Bar (1500 PSI) AC Std. 207 Bar (3000 PSI) DC Std./AC Opt. External Drain Model: 207 Bar (3000 PSI) CSA  103 Bar (1500 PSI)
<b>Max. Drain Pressure</b>	103 Bar (1500 PSI) AC only 207 Bar (3000 PSI) DC Std./AC Opt. CSA  103 Bar (1500 PSI)
<b>Min. Pilot Pressure</b>	6.9 Bar (100 PSI)
<b>Max. Pilot Pressure</b>	345 Bar (5000 PSI) Standard CSA  207 Bar (3000 PSI)
<b>Nominal Flow</b>	76 Liters/Min (20 GPM)
<b>Maximum Flow</b>	See Switching Limit Charts



### Response Time

Response time (milliseconds)  
 at 345 Bar (5000 PSI) is 76 LPM (20 GPM)

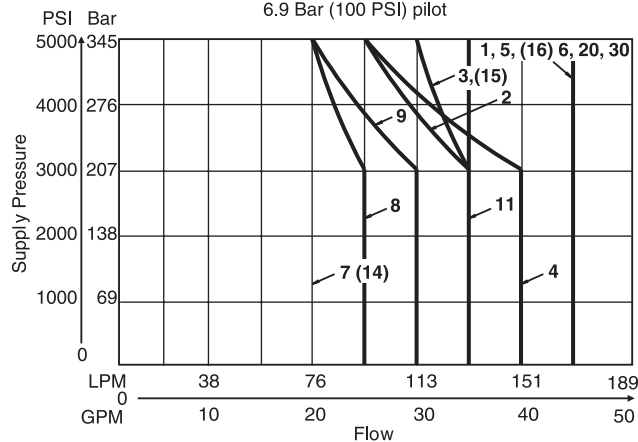
Solenoid Type	Pilot Pressure	Pull-In	Drop-Out
DC	500	40	50
	1000	36	50
	2000	34	50
AC	500	20	33
	1000	18	33
	2000	13	33

### Switching Limit Charts

For Styles B, C, E, H and K

**D Style – external drain only (For internal drain see note below)**

6.9 Bar (100 PSI) pilot

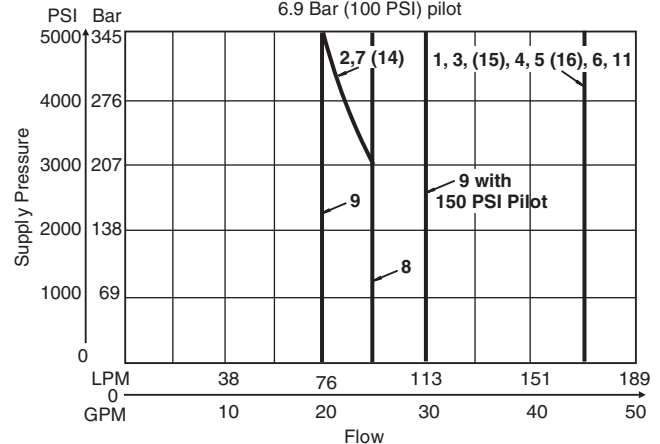


Note: Internal Drain  
 1, 4 spools – 113 LPM (30 GPM) max., 7 spool – per curve  
 All others – 95 LPM (25 GPM) max.

For Styles F and M – external drain only

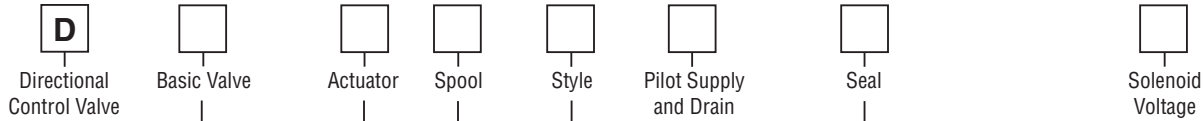
(For internal drain see note below)

6.9 Bar (100 PSI) pilot



Note: Internal Drain  
 1, 4 spools – 113 LPM (30 GPM) max., 2, 9 & 14 spools – per curve  
 All others – 95 LPM (25 GPM) max.

**A**



Code	Description
31D	NFPA D05HE, CETOP 5H, DIN NG10, D03 Pilot, ISO Port
31V	NFPA D05H, CETOP 5, D03 Pilot, NFPA Port

Code	Description
W#	Solenoid, Wet Pin, Screw-in
HW#	Reversed Wiring

Code	Description
N	Nitrile
V	Fluorocarbon

Code	Description
1*	Internal Pilot, External Drain
2*	External Pilot, External Drain
4#	Internal Pilot, Internal Drain
5	External Pilot, Internal Drain

Code	Description
A**	24/50 VAC
D	120 VDC
G	198 VDC
J	<b>24 VDC</b>
K	<b>12 VDC</b>
N***	220/50 VAC
P***	110/50 VAC
Q**	100/60 VAC
QD†	100 VAC/60 Hz 100 VAC/50 Hz
R	24/60 VAC
T	<b>240/60 - 220/50 VAC</b>
U	98 VDC
Y	<b>120/60 - 110/50 VAC</b>
Z	250 VDC

# Valve schematic symbols are per NFPA/ANSI standards, providing flow P to A when energizing solenoid A. Note operators reverse sides for #008 and #009 spools. See installation information for details. To configure per DIN standards (A coil over A port, B coil over B port) code valves as D31VHW\*\*\*.

\* F and M style available only with external drain.  
 # Not available with 002, 007, 008, 009 or 014 spools.

\*\* High watt only.  
 \*\*\* Explosion proof only.  
 † Available in DIN only.

Code	Symbol	Code	Symbol
001		011	
002		012	
003		014	
004		015	
005		016	
006		020*	
007		030**	
008*		081	
009**		082	
010			

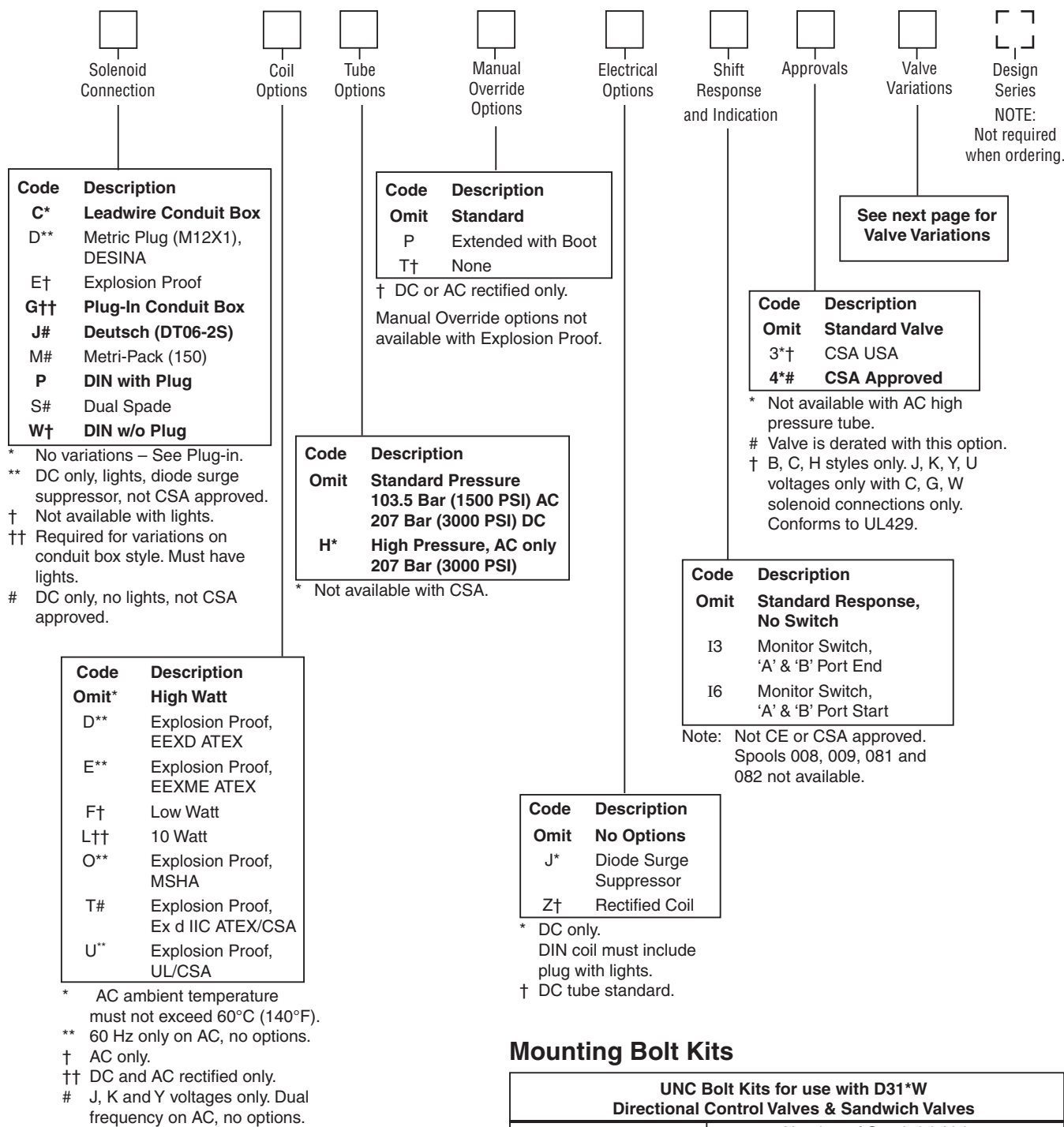
Code	Description	Symbol
B*	Single solenoid, 2 position, spring offset. P to A and B to T in offset position.	
C	Double solenoid, 3 position, spring centered.	
D*	Double solenoid, 2 position, detent.	
E	Single solenoid, 2 position, spring centered. P to B and A to T when energized.	
F†	Single solenoid, 2 position, spring offset, energized to center. Spacer on A side. P to A and B to T in offset position.	
H*	Single solenoid, 2 position, spring offset. P to B and A to T in offset position.	
K	Single solenoid, 2 position, spring centered. P to A and B to T when energized.	
M†	Single solenoid, 2 position, spring offset, energized to center. Spacer on B side. P to B and A to T in offset position.	

\* 020 and 030 spools only.  
 † High watt only.

\* 008 & 020 spools have closed crossover.  
 \*\* 009 & 030 spools have open crossover.

**Bold: Designates Tier I products and options.**

**Non-Bold: Designates Tier II products and options. These products will have longer lead times.**



**Valve Weight:**  
 Double Solenoid 5.4 kg (12.0 lbs.)

**Seal Kit:**  
 Nitrile SKD31VWN91  
 Fluorocarbon SKD31VWV91

**Mounting Bolt Kits**

UNC Bolt Kits for use with D31*W Directional Control Valves & Sandwich Valves					
		Number of Sandwich Valves @ 2.00" (50mm) thickness			
		0	1	2	3
D31*W	Standard:	BK98 1.62"	BK141 3.50"	BK142 5.50"	BK143 7.50"
	Metric:	BKM98 40mm	BKM141 90mm	BKM142 140mm	BKM143 190mm

NOTE: All bolts are SAE grade 8. Standard bolts are 1/4-20 UNCA thread. Metric bolts are M6-1.0 thread. Torque to 16 Nm (12 ft-lbs).

**Bold: Designates Tier I products and options.**

**Non-Bold: Designates Tier II products and options. These products will have longer lead times.**

**Valve Variations**

**A**

Code	Description
<b>5*</b>	<b>Signal Lights – Standard</b>
	<b>Signal Lights – Hirsch. (DIN with Plug)</b>
7B**	Manaplug – Brad Harrison (12x1) Micro with Lights
<b>56**</b>	<b>Manaplug (Mini) with Lights</b>
<b>20</b>	<b>Fast Response</b>
<b>1C**</b>	<b>Manaplug (Mini) Single Sol. 5-pin, with Lights</b>
1D**	Manaplug (Micro) Single Sol. 5-pin, with Lights
1G**	Manaplug (Mini) Single Sol. 5-pin, with Stroke Adjust 'A' & 'B' End and Lights
1H**	Manaplug (Micro) Single Sol. 5-pin, with Stroke Adjust 'A' & 'B' End and Lights
1M**	Manaplug Opposite Normal
1P	Painted Body
1R	Stroke Adjust 'A' & 'B' End with Pilot Choke Meter In
<b>3A</b>	<b>Pilot Choke Meter Out</b>
<b>3B</b>	<b>Pilot Choke Meter In</b>
<b>3C</b>	<b>Pilot Pressure Reducer</b>
3D	Stroke Adjust 'B' End
3E	Stroke Adjust 'A' End
3F	Stroke Adjust 'A' & 'B' End
<b>3G*</b>	<b>Pilot Choke Meter Out with Lights</b>
<b>3H*</b>	<b>Pilot Choke Meter In with Lights</b>
3J*	Pilot Pressure Reducer with Lights
3K	Pilot Choke Meter Out with Stroke Adjust 'A' & 'B' End
3L**	Pilot Choke Meter Out, Stroke Adjust 'A' & 'B' End with Lights and Manaplug — Brad Harrison Mini
3M	Pilot Choke Meter Out, Pilot Pressure Reducer, Stroke Adjust 'A' & 'B' End
3R	Pilot Choke Meter Out & Pilot Pressure Reducer
3S**	Lights, Mini Manaplug, Pilot Choke Meter Out
7Y**	M12x1 Manaplug (4-pin), Special Wiring, and Lights

\* DESINA, plug-in conduit box, and DIN with plug styles only.

\*\* Must have plug-in style conduit box.

### D31 Series Pressure Drop vs. Flow

The chart below provides the flow vs. pressure drop curve reference for the D31 Series valves by spool type.

Example:

Find the pressure drop at 76 LPM (20 GPM) for a D31 with a number 1 spool. To the right of spool number 1, locate the number 3 in the P-A column, and 2 in the B-T column.

Using the graph at the bottom, locate curves 2 and 3 and read the pressure drop values. Total pressure drop through the valve is the sum of the two values.

*Note: Pressure drops should be checked for all flow paths, especially when using non-symmetrical spools (003, 005, 007, 014, 015 and 016) and unbalanced actuators.*

### D31 Pressure Drop Reference Chart

Spool No.	Curve Number										
	Shifted				Center Condition						
	P-A	P-B	B-T	A-T	(P-T)	(B-A)	(A-B)	(P-A)	(P-B)	(A-T)	(B-T)
001	3	3	2	1	-	-	-	-	-	-	-
002	3	3	1	1	3	3	3	4	4	1	1
003	3	3	1	1	-	-	-	-	-	3	-
004	3	3	1	1	-	-	-	-	-	1	1
005	3	3	1	1	-	-	-	5	-	-	-
006	3	3	1	1	-	5	7	6	5	-	-
007	4	2	1	1	4	-	-	-	3	-	2
009	3	3	1	1	7	-	-	-	-	-	-
010	3	2	-	-	-	-	-	-	-	-	-
011	3	2	1	1	-	-	-	-	-	8	8
014	2	4	1	1	4	-	-	4	-	2	-
015	3	2	4	1	-	-	-	-	-	-	4
016	5	2	1	1	-	-	-	-	5	-	-
020	5	4		2	2	-	-	-	-	-	-
030	4	3		1	1	-	-	-	-	-	-

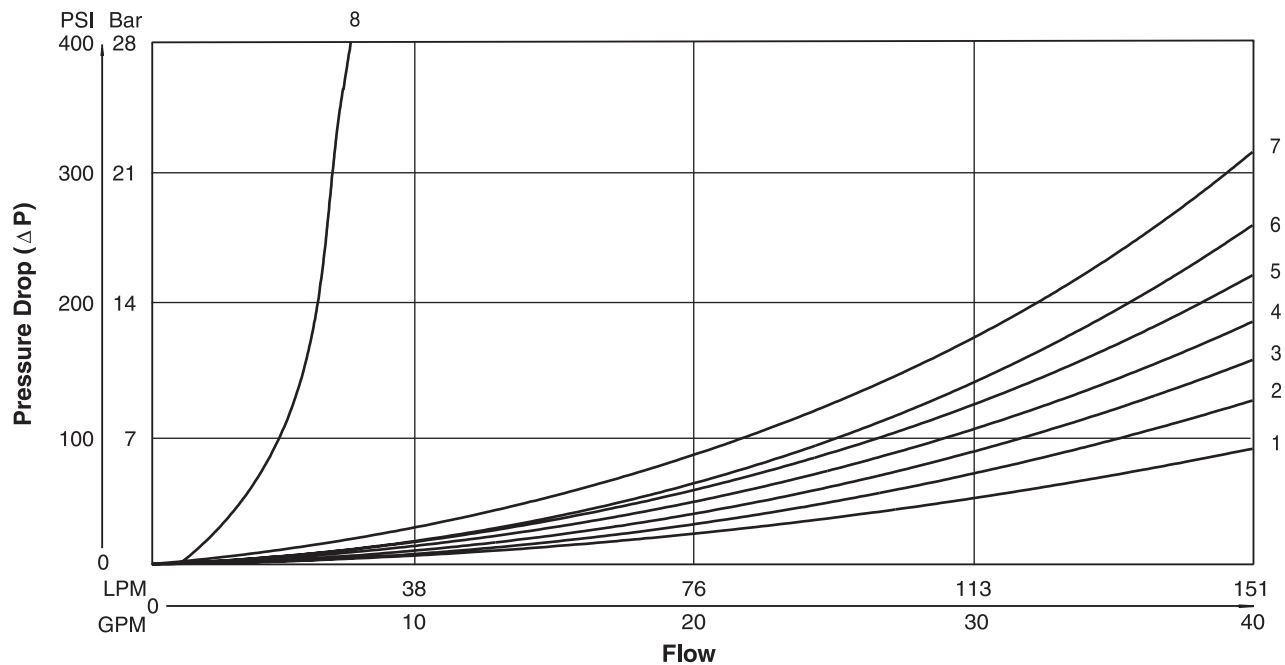


### Viscosity Correction Factor

Viscosity (SSU)	75	150	200	250	300	350	400
% of ΔP (Approx.)	93	111	119	126	132	137	141

Curves were generated using 110 SSU hydraulic oil.  
 For any other viscosity, pressure drop will change per chart.

### Performance Curves





### Solenoid Ratings

<b>Insulation System</b>	Class F
<b>Allowable Deviation from rated voltage</b>	-15% to +10% for DC and AC rectified coils -5% to +5% for AC Coils
<b>Armature</b>	Wet pin type
<b>CSA File Number</b>	LR60407
<b>Environmental Capability</b>	DC Solenoids meet NEMA 4 and IP67 when properly wired and installed. Contact HVD for AC coil applications.

### Explosion Proof Solenoid Ratings\*

<b>U.L. &amp; CSA (EU)</b>	Class I, Div 1 & 2, Groups C & D Class II, Div 1 & 2, Groups E, F & G As defined by the N.E.C.
<b>MSHA (EO)</b>	Complies with 30CFR, Part 18
<b>ATEX (ED)</b>	Complies with ATEX requirements for: Exd, Group IIB; EN50014: 1999+ Amds. 1 & 2, EN50018: 2000
<b>ATEX &amp; CSA/US (ET)</b>	Complies with ATEX EN60079-0, EN60079-1 Ex d IIC; CSA/US Ex d IIC, AEx d IIC for Class I, Zone 1, UL1203, UL1604, CSA E61241,1 Class II, Div 1

\* Allowable Voltage Deviation ±10%.  
 Note that Explosion Proof AC coils are single frequency only.

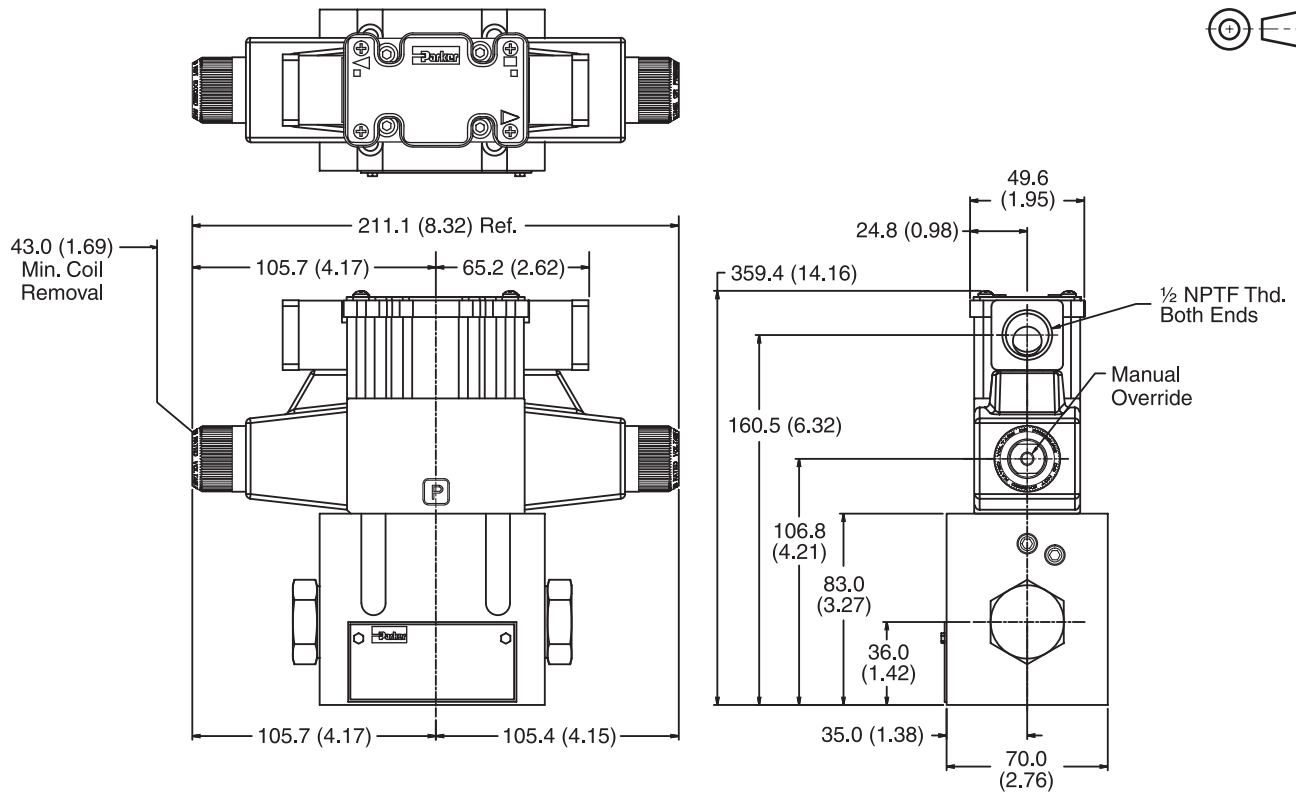
Code		Voltage	In Rush Amps Amperage	In Rush VA	Holding Amps @ 3MM	Watts	Resistance
Voltage Code	Power Code						
D	L	120 VDC	N/A	N/A	0.09 Amps	10 W	1584.00 ohms
D	Omit	120 VDC	N/A	N/A	0.26 Amps	30 W	528.00 ohms
G	Omit	198 VDC	N/A	N/A	0.15 Amps	30 W	1306.80 ohms
J	L	24 VDC	N/A	N/A	0.44 Amps	10 W	51.89 ohms
J	Omit	24 VDC	N/A	N/A	1.32 Amps	30 W	17.27 ohms
K	L	12 VDC	N/A	N/A	0.88 Amps	10 W	12.97 ohms
K	Omit	12 VDC	N/A	N/A	2.64 Amps	30 W	4.32 ohms
L	L	6 VDC	N/A	N/A	1.67 Amps	10 W	3.59 ohms
L	Omit	6 VDC	N/A	N/A	5.00 Amps	30 W	1.20 ohms
Q	Omit	100 VAC / 60 Hz	2.05 Amps	170 VA	0.77 Amps	30 W	19.24 ohms
QD	F	100 VAC / 60 Hz	1.35 Amps	135 VA	0.41 Amps	18 W	31.20 ohms
QD	F	100 VAC / 50 Hz	1.50 Amps	150 VA	0.57 Amps	24 W	31.20 ohms
R	F	24/60 VAC, Low Watt	6.67 Amps	160 VA	2.20 Amps	23 W	1.52 ohms
T	Omit	240/60 VAC	0.83 Amps	199 VA	0.30 Amps	30 W	120.40 ohms
T	Omit	220/50 VAC	0.87 Amps	191 VA	0.34 Amps	30 W	120.40 ohms
T	F	240/60 VAC, Low Watt	0.70 Amps	168 VA	0.22 Amps	21 W	145.00 ohms
T	F	220/50 VAC, Low Watt	0.75 Amps	165 VA	0.26 Amps	23 W	145.00 ohms
U	L	98 VDC	N/A	N/A	0.10 Amps	10 W	960.00 ohms
U	Omit	98 VDC	N/A	N/A	0.31 Amps	30W	288.00 ohms
Y	Omit	120/60 VAC	1.7 Amps	204 VA	0.60 Amps	30 W	28.20 ohms
Y	Omit	110/50 VAC	1.7 Amps	187 VA	0.68 Amps	30 W	28.20 ohms
Y	F	120/60 VAC, Low Watt	1.40 Amps	168 VA	0.42 Amps	21 W	36.50 ohms
Y	F	110/50 VAC, Low Watt	1.50 Amps	165 VA	0.50 Amps	23 W	36.50 ohms
Z	L	250 VDC	N/A	N/A	0.04 Amps	10 W	6875.00 ohms
Z	Omit	250 VDC	N/A	N/A	0.13 Amps	30 W	1889.64 ohms
<b>Explosion Proof Solenoids</b>							
R		24/60 VAC	7.63 Amps	183 VA	2.85 Amps	27 W	1.99 ohms
T		240/60 VAC	0.76 Amps	183 VA	0.29 Amps	27 W	1.34 ohms
N		220/50 VAC	0.77 Amps	169 VA	0.31 Amps	27 W	1.38 ohms
Y		120/60 VAC	1.60 Amps	192 VA	0.58 Amps	27 W	33.50 ohms
P		110/50 VAC	1.47 Amps	162 VA	0.57 Amps	27 W	34.70 ohms
K		12 VDC	N/A	N/A	2.75 Amps	33 W	4.36 ohms
J		24 VDC	N/A	N/A	1.38 Amps	33 W	17.33 ohms
<b>"ET" Explosion Proof Solenoids</b>							
K		12 VDC	N/A	N/A	1.00 Amps	12 W	12.00 ohms
J		24 VDC	N/A	N/A	1.00 Amps	13 W	44.30 ohms
Y		120/60-50 VAC	N/A	N/A	0.16 Amps	17 W	667.00 ohms

D31.indd, dd

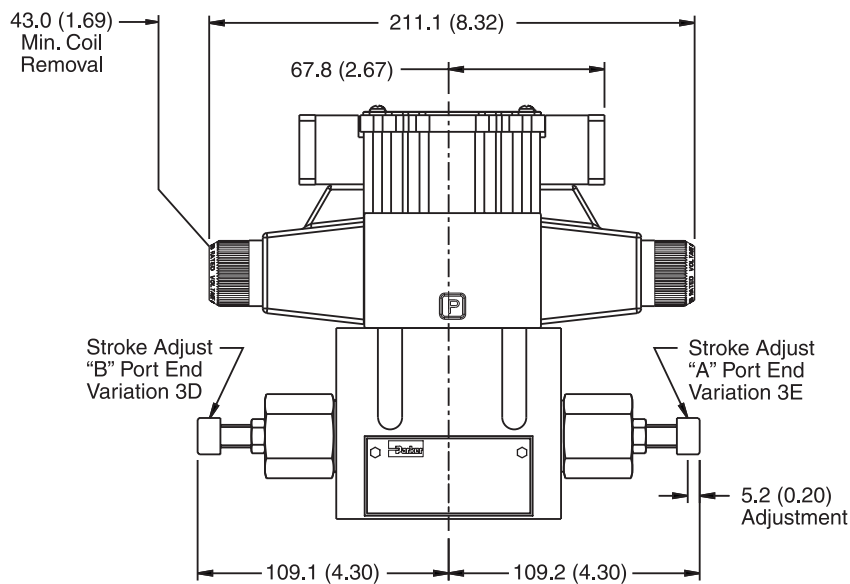


Inch equivalents for millimeter dimensions are shown in (\*\*)

**Conduit Box, Double AC Solenoid**



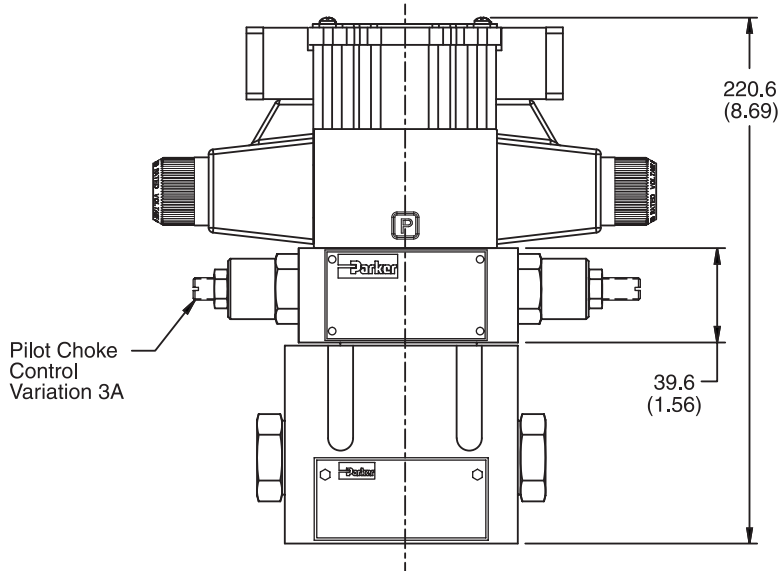
**Conduit Box and Stroke Adjust, Double AC Solenoid**



Inch equivalents for millimeter dimensions are shown in (\*\*)

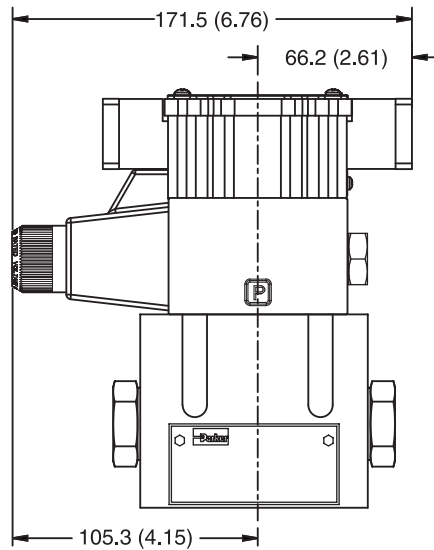
**A**

**Conduit Box and Pilot Choke Control, Double AC Solenoid**



**Note:** 30.0mm (1.18") from bottom of bolt hole counterbore to bottom of valve.

**Conduit Box, Single AC Solenoid**

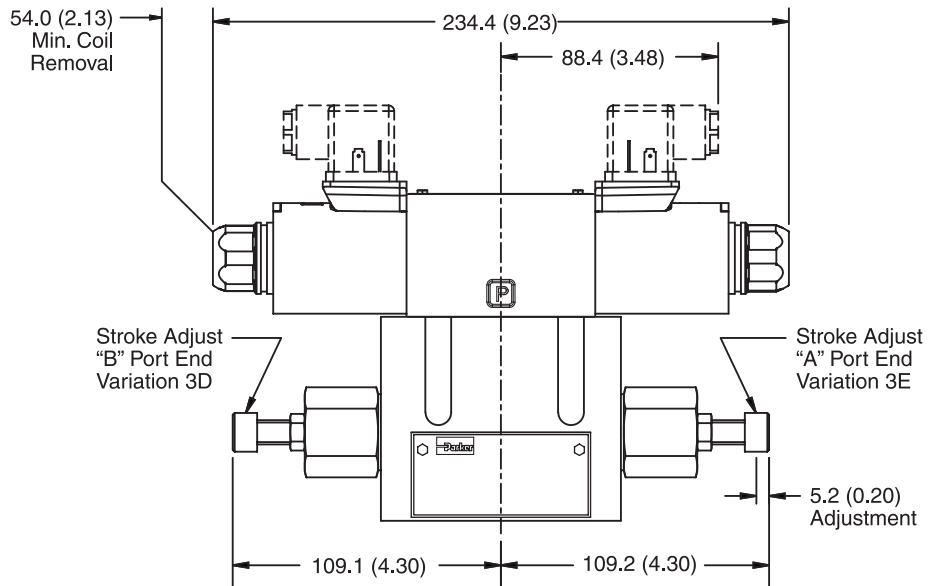


**Note:** 30.0mm (1.18") from bottom of bolt hole counterbore to bottom of valve.



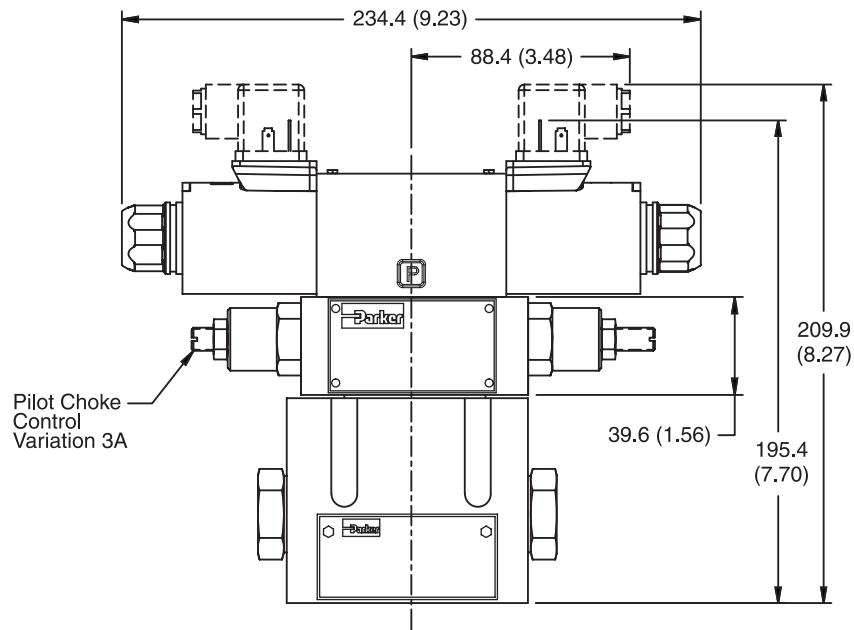
Inch equivalents for millimeter dimensions are shown in (\*\*)

**Hirschmann and Stroke Adjust, Double DC Solenoid**



**Note:** 30.0mm (1.18") from bottom of bolt hole counterbore to bottom of valve.

**Hirschmann and Pilot Choke Control, Double DC Solenoid**



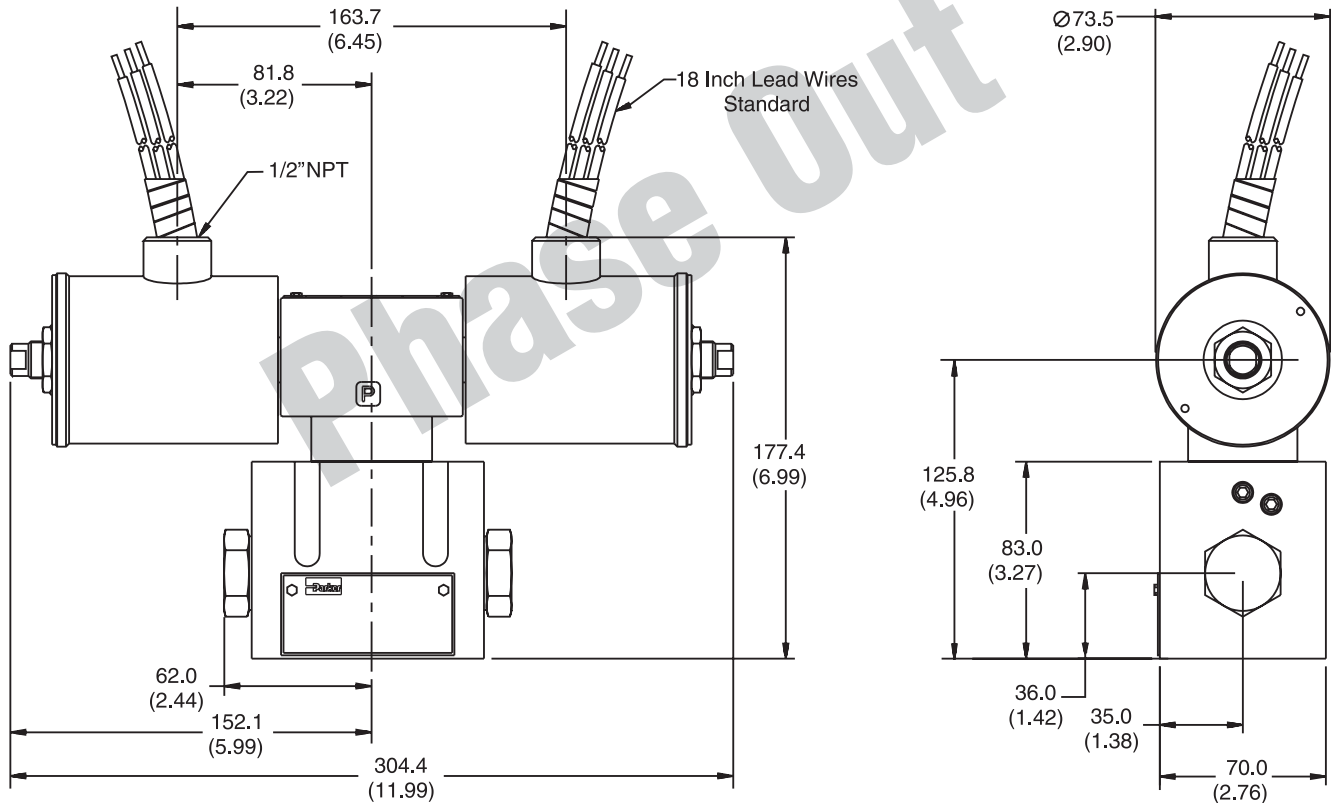
**Note:** 30.0mm (1.18") from bottom of bolt hole counterbore to bottom of valve.

Inch equivalents for millimeter dimensions are shown in (\*\*)

**A**

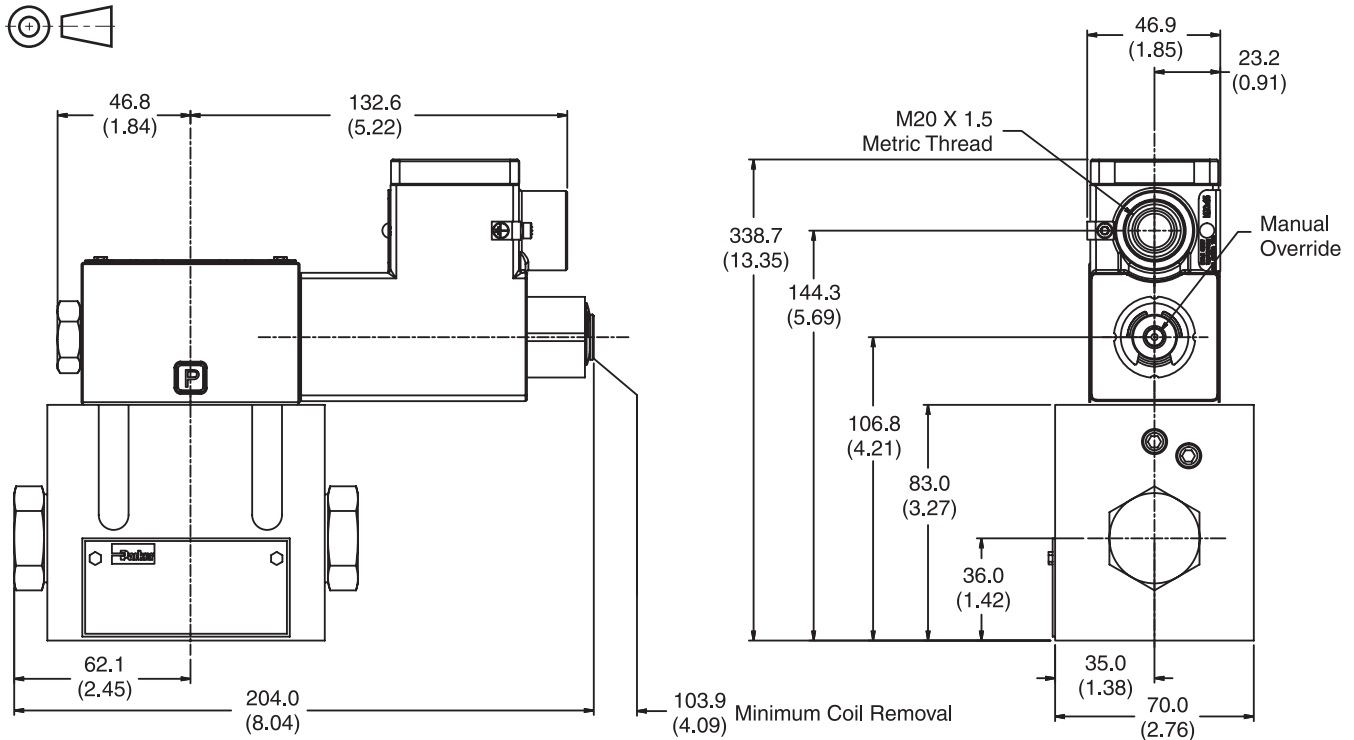
**Explosion Proof U.L. and C.S.A. Approved, Double Solenoid**

Note:  
2 Black Wires  
1 Green Wire

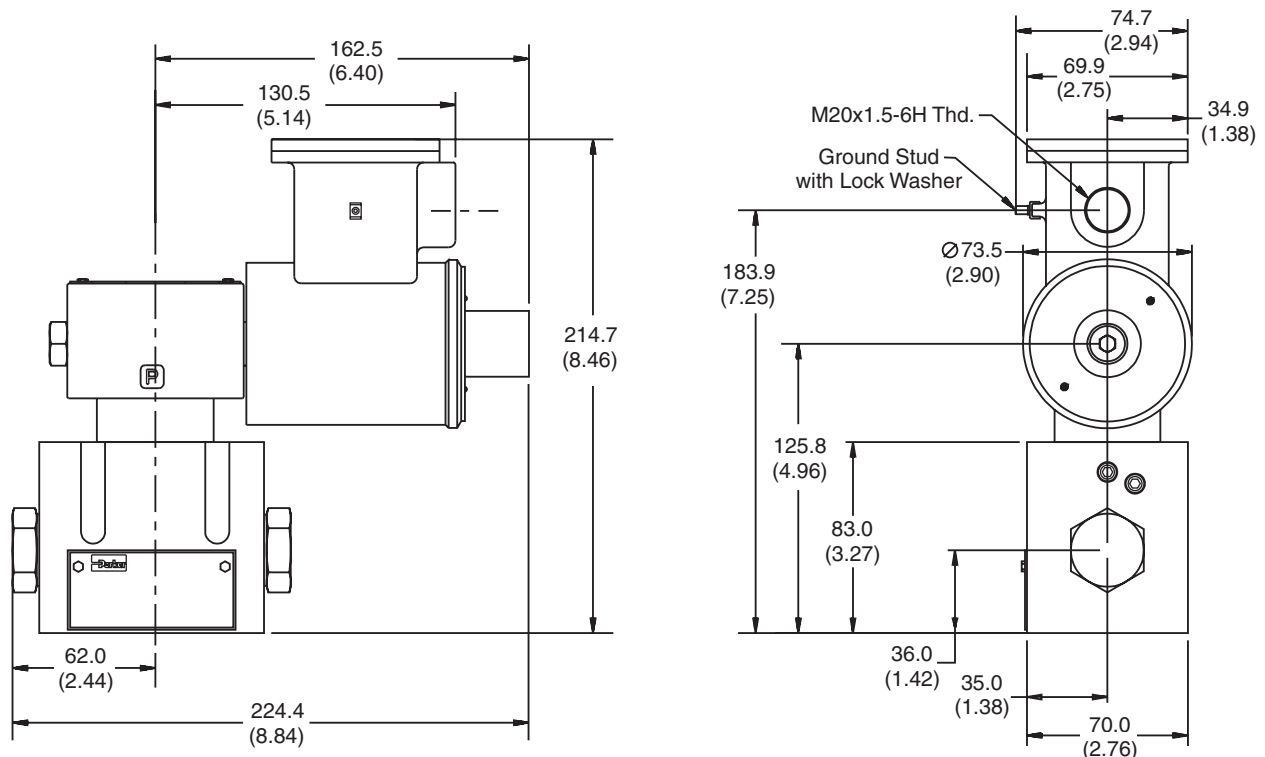


Inch equivalents for millimeter dimensions are shown in (\*\*)

**Explosion Proof, EX d IIC ATEX/CSA Single Solenoid**



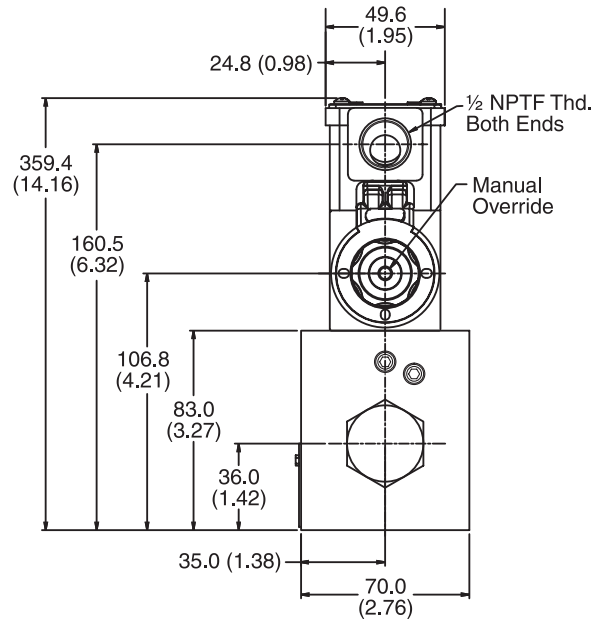
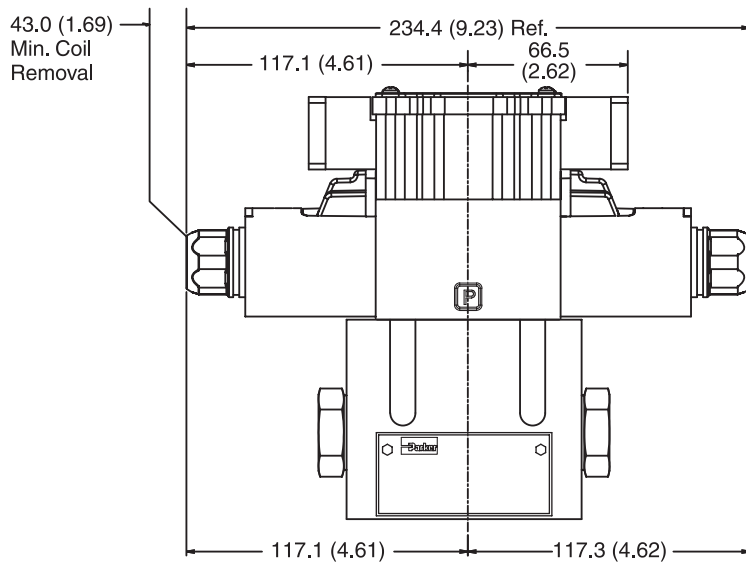
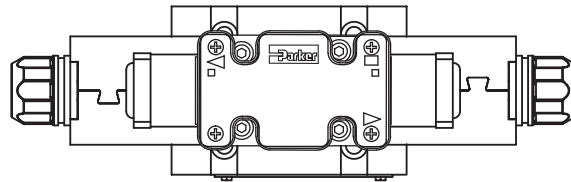
**Explosion Proof, EEXD ATEX, Single Solenoid**



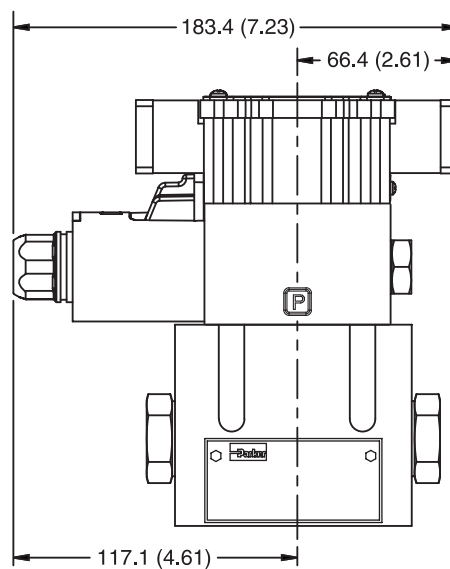
Inch equivalents for millimeter dimensions are shown in (\*\*)

**A**

**Plug-in Conduit Box, Double DC Solenoid**



**Plug-in Conduit Box, Single DC Solenoid**

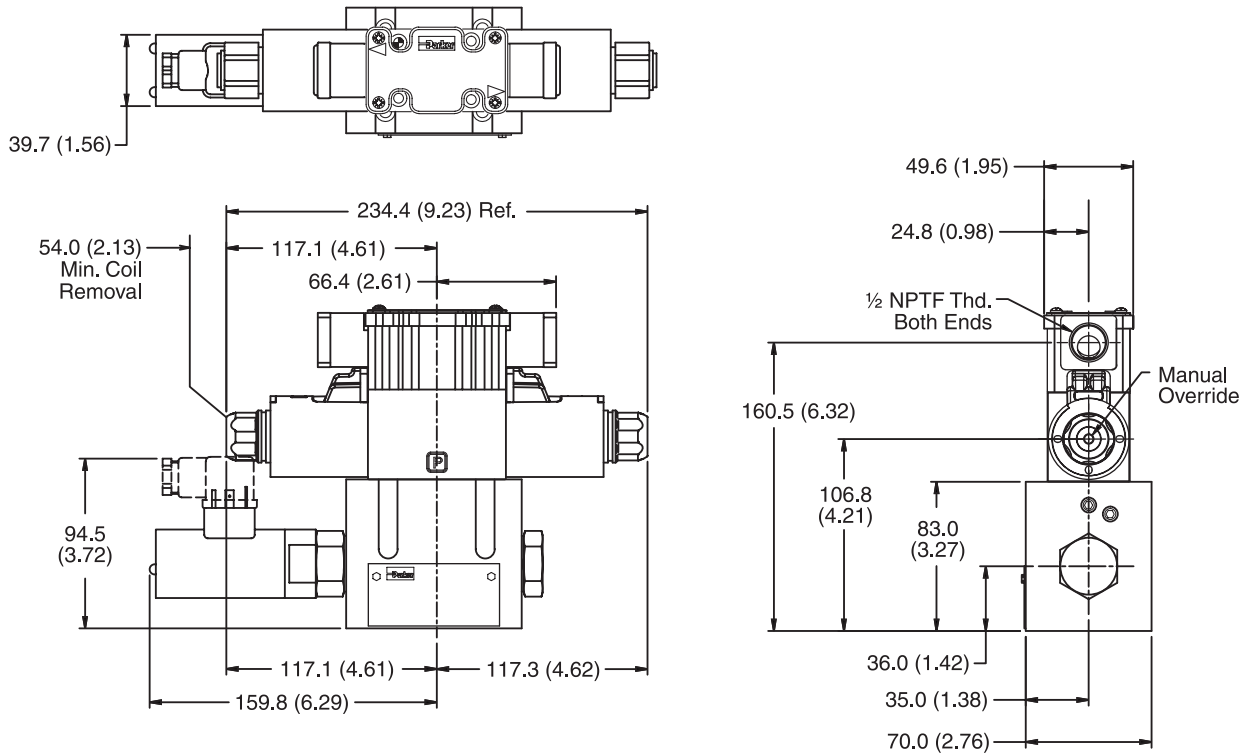


Inch equivalents for millimeter dimensions are shown in (\*\*)

**Plug-in Conduit Box, Double DC Solenoid with Variation I3 (Monitor Switch)**



**Double Solenoid.** With solenoid "A" energized, flow path is P→A and B→T. When solenoid "B" is energized, flow path is P→B and A→T. The center condition on a spring-centered valve exists when both coils are de-energized, or during a complete shift, as the spool passes through center.

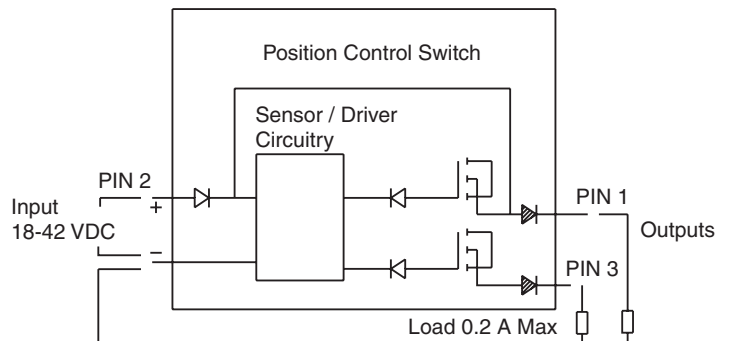


**Monitor Switch  
(Variation I3 and I6)**

This feature provides for electrical confirmation of the spool shift. This can be used in safety circuits, to assure proper sequencing, etc.

**Switch Data**

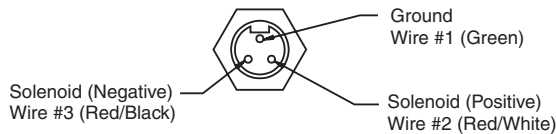
Pin 1 and Pin 3 have outputs equal to the input. When the monitor switch has the output to Pin 1, Pin 3 will have an output of zero, and vice-versa. When the valve is switched, Pin 1 and Pin 3 will switch outputs.





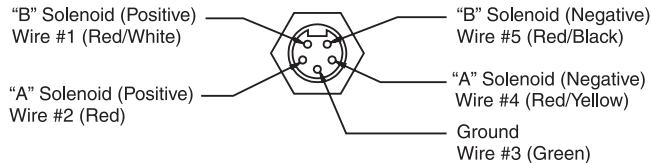
**Manaplug (Options 6, 56, 1A & 1C)**

- Interface – Brad Harrison Plug
- 3-Pin for Single Solenoid
- 5-Pin for Double Solenoid



**3-Pin Manaplug (Mini) with Lights**

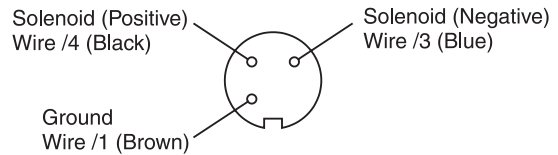
Single Solenoid Valves – Installed Opposite Side of Solenoid



**5-Pin Manaplug (Mini) with Lights**

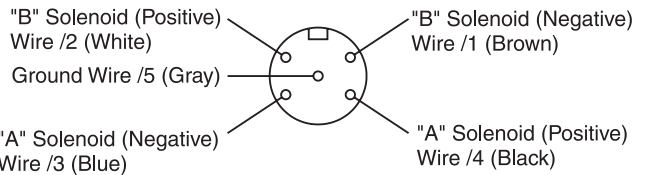
Single Solenoid Valves – Installed Opposite Side of Solenoid  
 Double Solenoid Valves – Installed Over "A" Solenoid  
 ("A" and "B" Solenoids Reversed for #8 and #9 Spools)

**Micro Connector Options (7A, 7B, 1B & 1D)**



**3-Pin Manaplug (Micro) with Lights**

Single Solenoid Valves – Installed Opposite Side of Solenoid



**5-Pin Manaplug (Micro) with Lights**

Single Solenoid Valves – Installed Opposite Side of Solenoid  
 Double Solenoid Valves – Installed Over "A" Solenoid  
 ("A" and "B" Solenoids Reversed for #8 and #9 Spools)

**Pins are as seen on valve (male pin connectors)**

**Manaplug – Electrical Mini Plug**

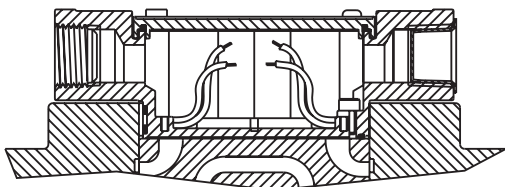
- EP336-30** 3 Pin Plug
- EP316-30** 5 Pin Plug (Double Solenoid)
- EP31A-30** 5 Pin Plug (Single Solenoid)

**Manaplug – Electrical Micro Plug**

- EP337-30** 3 Pin Plug
- EP317-30** 5 Pin Plug (Double Solenoid)
- EP31B-30** 5 Pin Plug (Single Solenoid)

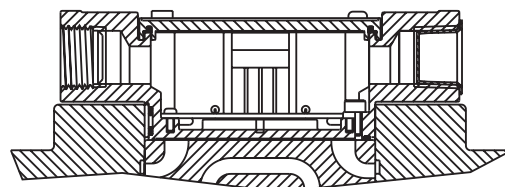
**Conduit Box Option C**

- No Wiring Options Available

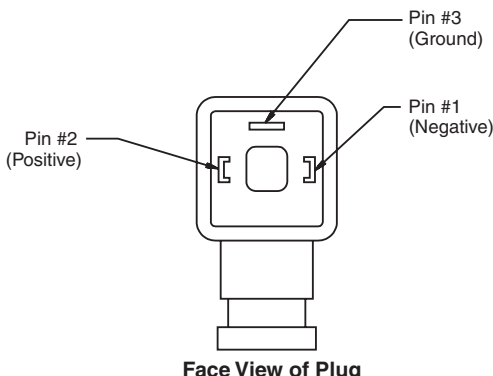


**Signal Lights (Option 5) — Plug-in Only**

- LED Interface
- Meets Nema 4/IP67



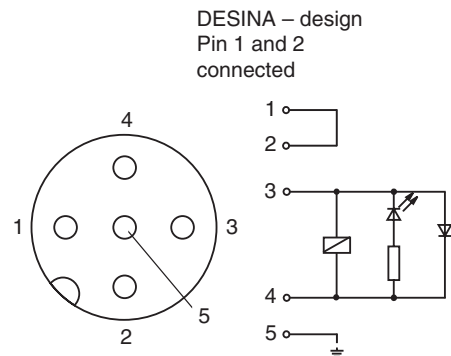
**Hirschmann Plug with Lights (Option P5)  
 ISO 4400/DIN 43650 Form "A"**



Face View of Plug

**DESINA Connector (Option D)  
 M12 pin assignment  
 Standard**

- 1 = Not used
- 2 = Not used
- 3 = 0V
- 4 = Signal (24 V)
- 5 = Earth Ground



**Pins are as seen on valve (male pin connectors)**