

General Description

Series R4V and R6V proportional pressure relief valves for external electronics feature a proportionally adjusted pilot stage which controls a seated type main stage. The valves are equipped with a mechanical maximum pressure stage (optional for R6V).

B

The optimum performance can be achieved in combination with the digital amplifier module PCD00A-400.

Features

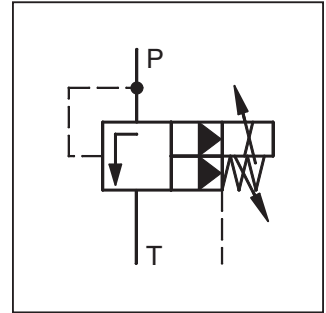
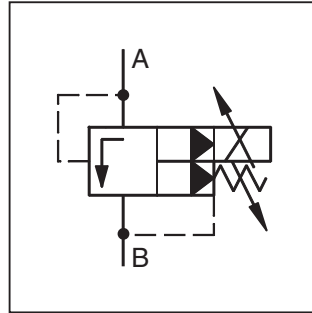
- Pilot operated with proportional solenoid
- Continuous adjustment by proportional solenoid
- 3 pressure ranges
- Optional mechanical maximum pressure adjustment
- 2 interfaces
 - R4V Subplate ISO 6264 (DIN 24340 Form D)
 - R6V Subplate ISO 6264 (DIN 24340 Form E)



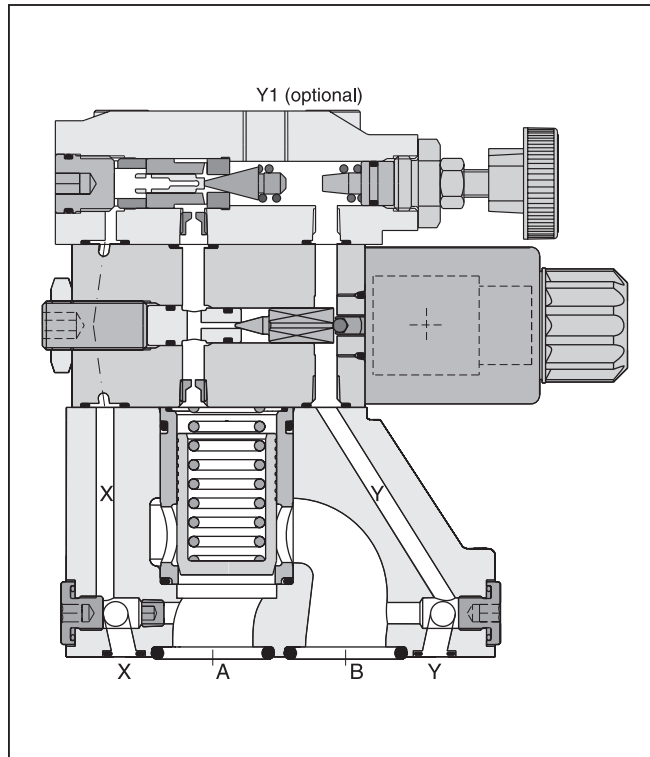
R4V



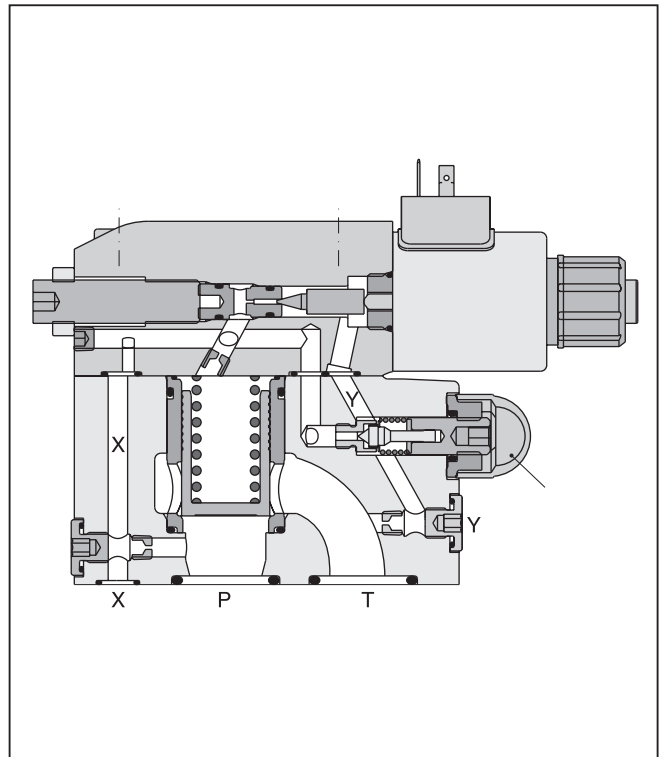
R6V



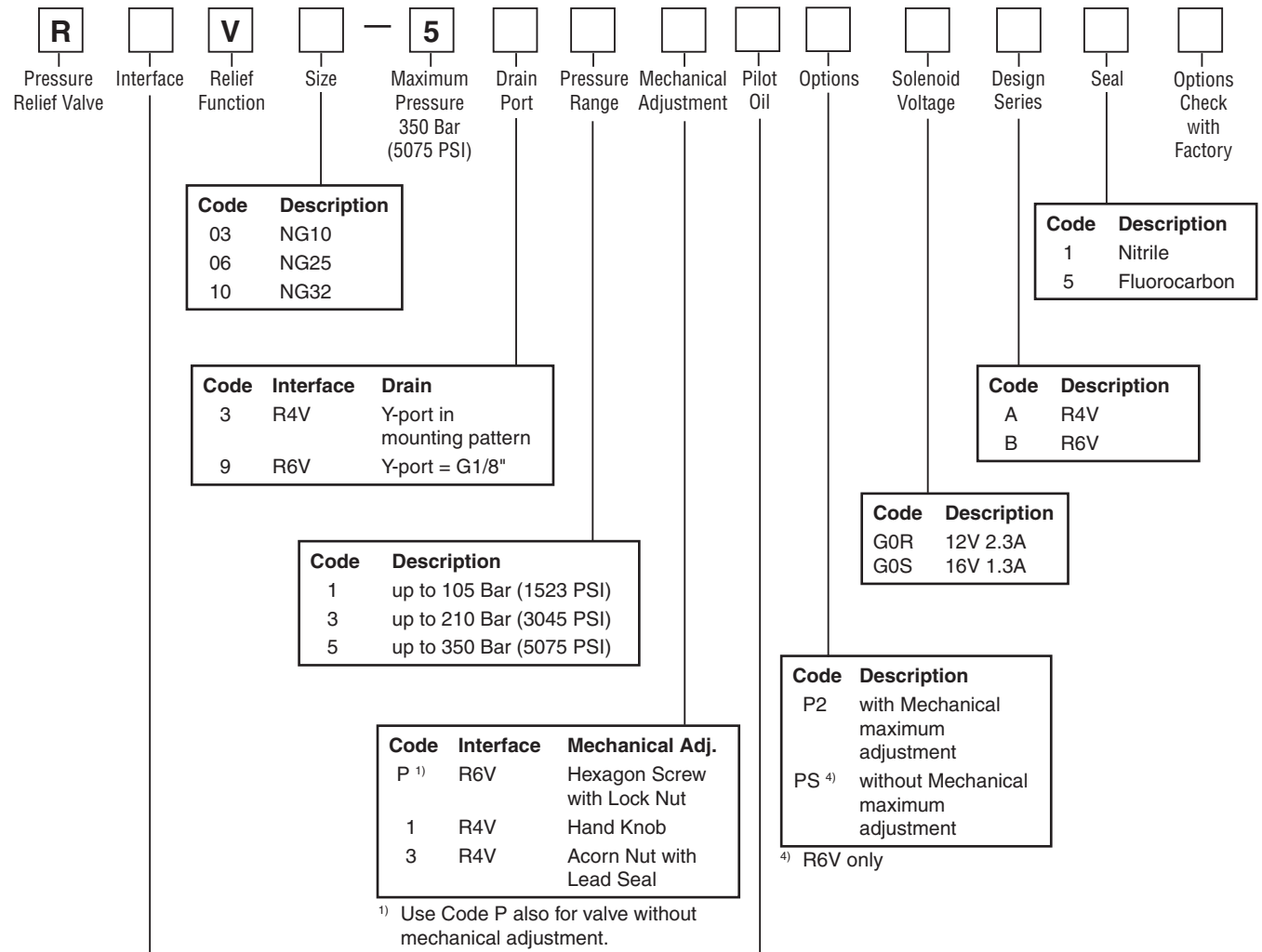
R4V



R6V



WARNING: This product can expose you to chemicals including Lead, Nickel (Metallic), or 1,3-Butadiene which are known to the State of California to cause cancer, and Lead or 1,3-Butadiene which is known to the State of California to cause birth defects and other reproductive harm. For more information go to www.P65Warnings.ca.gov.
 B01_Cat2550.indd, ddp, 04/19



Code	Description
4	Subplate Mounting ISO 6264
6	ISO 6264

- Bolt Kits:**
- R4V03 BK505
 - R4V06 BK485
 - R4V10 BK506
 - R6V03 BK494
 - R6V06 BK366
 - R6V10 BK507

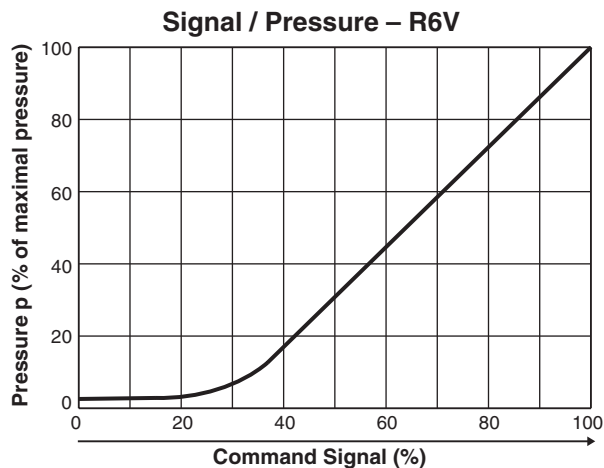
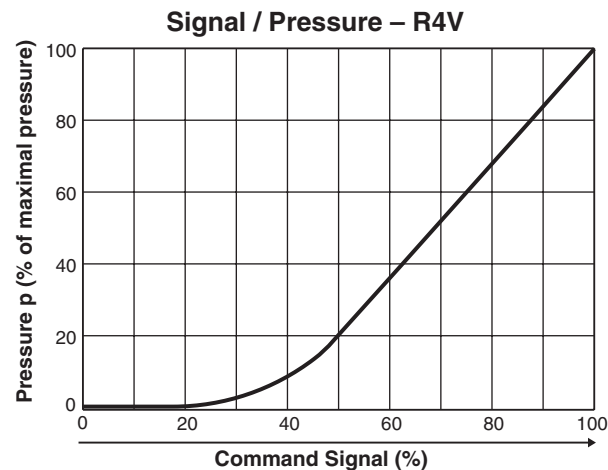
- Weight:**
- R4V03 4.5 kg (9.9 lbs.)
 - R4V06 6.3 kg 13.9 (lbs.)
 - R4V10 7.8 kg (17.2 lbs.)
 - R6V03 5.2 kg (11.5 lbs.)
 - R6V06 6.4 kg (14.1 lbs.)
 - R6V10 8.3 kg (18.3 lbs.)



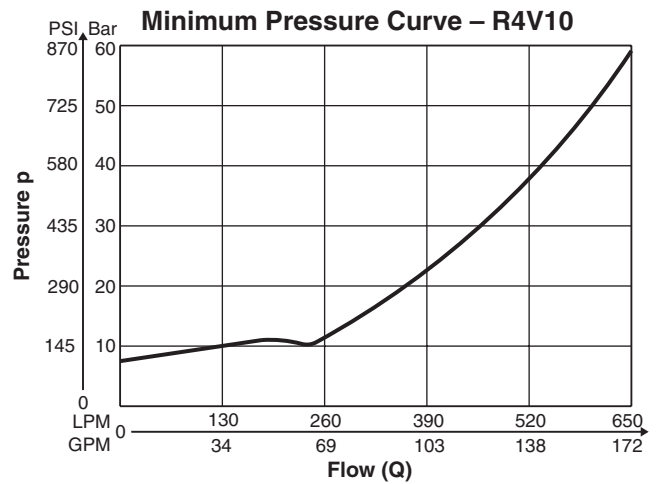
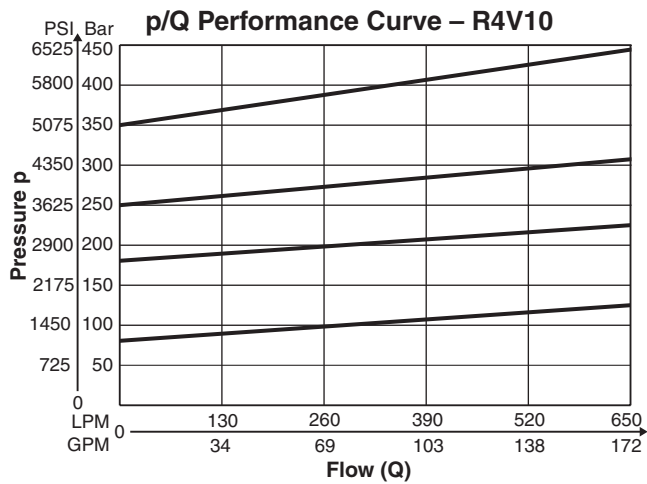
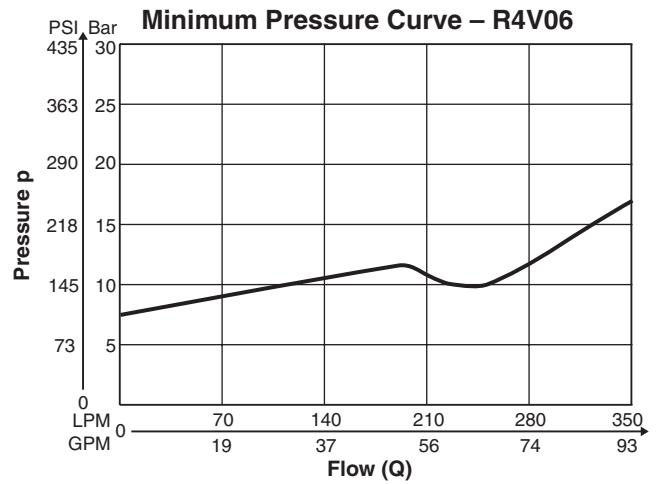
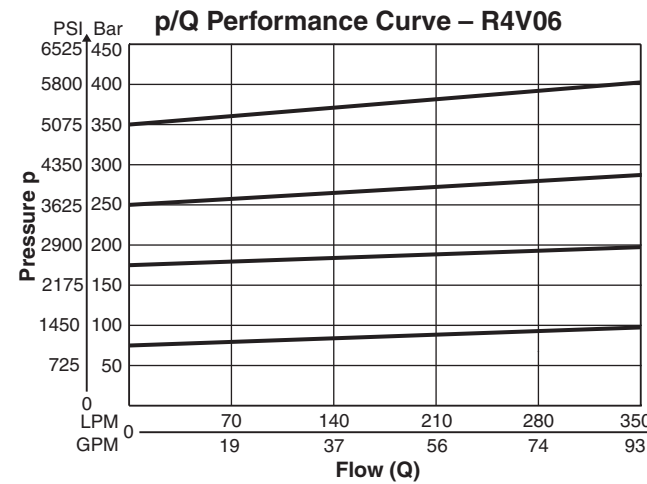
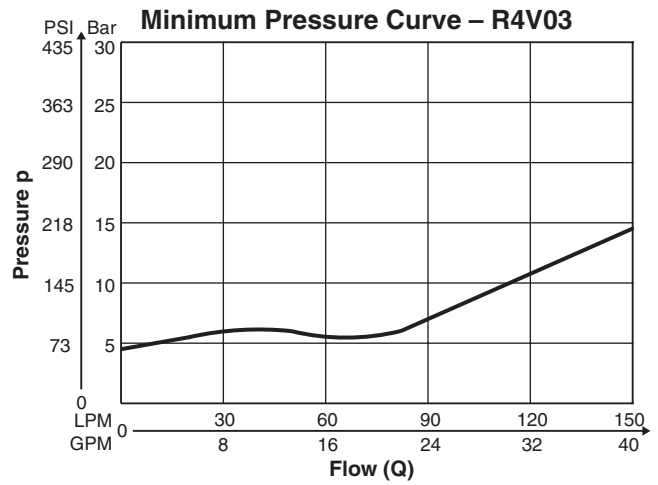
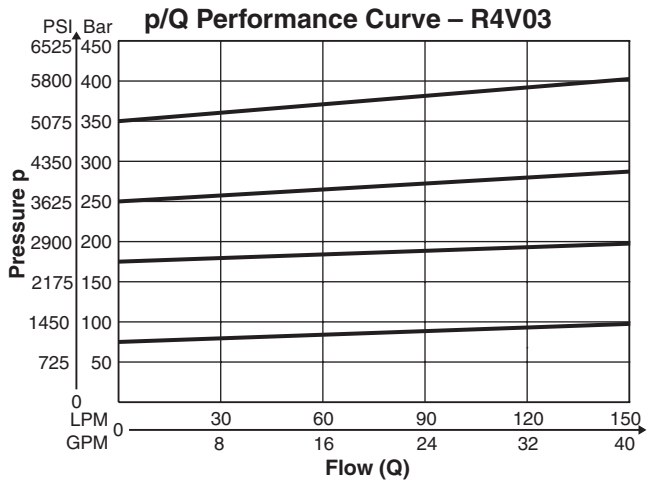
Specifications

General				
Size	NG10		NG25	NG32
Interface	Subplate Mounting acc. ISO 6264			
Mounting Position	As desired, horizontal position preferred			
Ambient Temperature Range	-20°C to +80°C (-4°F to +176°F)			
Hydraulic				
Maximum Operating Pressure	Ports P (or A) and X 350 Bar (5075 PSI); Port T (or B) and Y depressurized			
Pressure Range	105 Bar (1523 PSI), 210 Bar (3045 PSI), 350 Bar (5075 PSI)			
Nominal Flow	R4V R6V	150 LPM (39.7 GPM) 250 LPM (66.1 GPM)	350 LPM (92.6 GPM) 500 LPM (132.3 GPM)	650 LPM (172.0 GPM) 650 LPM (172.0 GPM)
Fluid	Hydraulic oil as per DIN 51524...51535, other on request			
Fluid Temperature	-20°C to +70°C (-4°F to +158°F)			
Viscosity	Permitted	20 to 380 cSt / mm ² /s (93 to 1761 SSU)		
	Recommended	30 to 50 cSt / mm ² /s (139 to 232 SSU)		
Filtration	ISO Class 4406 (1999) 18/16/13 (acc. NAS 1638: 7)			
Electrical (Proportional Solenoid)				
Duty Ratio	100% ED; CAUTION: Coil temperature up to 150°C (302°F) possible			
Protection Class	IP65 in accordance with EN60529 (plugged and mounted)			
Supply Voltage	12 VDC (maximum current 2.3 amps) or 16 VDC (maximum current 1.3 amps)			
Coil Resistance	4 Ohm at 20°C (68°F) for 12V; 12 Ohm at 20°C (68°F) for 16V			
Solenoid Connectors	Connector as per EN 175301-803			
Power Amplifier, Recommended	PCD00A-400			

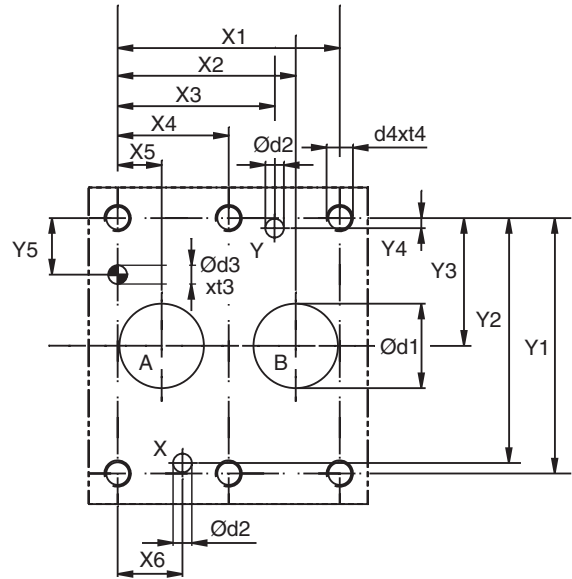
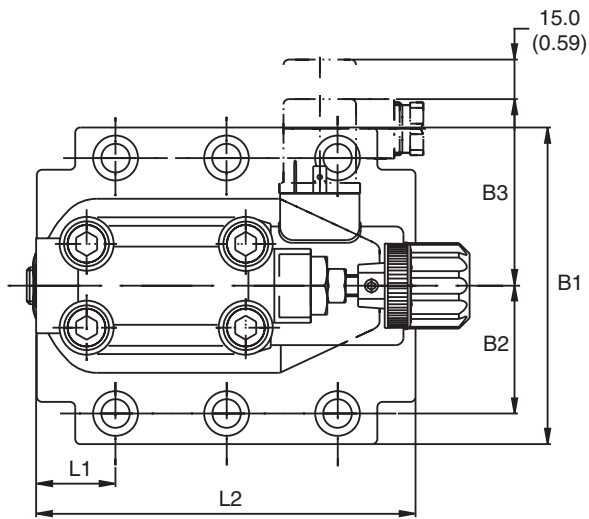
Performance Curves



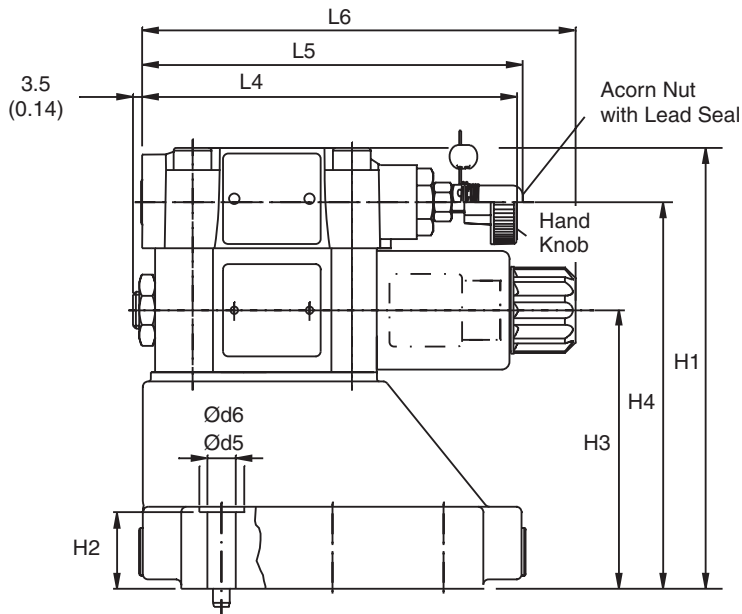
B



The performance curves are measured with external drain.
 For internal drain the tank pressure has to be added to curve.



B





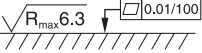
Inch equivalents for millimeter dimensions are shown in (**)

NG	ISO-code	x1	x2	x3	x4	x5	x6	x7	y1	y2	y3	y4	y5	y6
10	6264-06-07-*-97	42.9 (1.69)	35.8 (1.41)	21.5 (0.85)	-	7.2 (0.28)	21.5 (0.85)	0	66.7 (2.63)	58.8 (2.31)	33.4 (1.31)	7.9 (0.31)	14.3 (0.56)	-
25	6264-08-11-*-97	60.3 (2.37)	49.2 (1.94)	39.7 (1.56)	-	11.1 (0.44)	20.6 (0.81)	0	79.4 (3.13)	73 (2.87)	39.7 (1.56)	6.4 (0.25)	15.9 (0.63)	-
32	6264-10-15-*-97	84.2 (3.31)	67.5 (2.66)	59.5 (2.34)	42.1 (1.66)	16.7 (0.66)	24.6 (0.97)	0	96.8 (3.81)	92.8 (3.65)	48.4 (1.91)	3.8 (0.15)	21.4 (0.84)	-

Tolerance at X and Y pin holes and screw holes ±0.1, at port holes ±0.2.

NG	ISO-code	B1	B2	B3	H1	H2	H3	H4	H6	L1	L2	L3	L4	L5	L6
10	6264-06-07-*-97	87.3 (3.44)	33.4 (1.31)	71.0 (2.80)	130.0 (5.12)	21.0 (0.83)	68.5 (2.70)	109.5 (4.31)	-	25.0 (0.98)	90.8 (3.57)	-	143.0 (5.63)	144.8 (5.70)	164.8 (6.49)
25	6264-08-11-*-97	105.0 (4.13)	39.7 (1.56)	71.0 (2.80)	154.5 (6.08)	29.0 (1.14)	95.0 (3.74)	136.0 (5.35)	-	30.9 (1.22)	123.0 (4.84)	-	143.0 (5.63)	144.8 (5.70)	164.8 (6.49)
32	6264-10-15-*-97	120.0 (4.72)	48.4 (1.91)	71.0 (2.80)	167.0 (6.57)	30.0 (1.18)	105.5 (4.15)	146.5 (5.77)	-	29.8 (1.17)	143.5 (5.65)	-	143.0 (5.63)	144.8 (5.70)	164.8 (6.49)

NG	ISO-code	d1max	d2max	d3	t3	d4	t4	d5	d6	Subplate
10	6264-06-07-*-97	15.0 (0.59)	7.0 (0.28)	7.1 (0.28)	8.0 (0.31)	M10	16.0 (0.63)	10.8 (0.43)	17.0 (0.67)	SPP3M6B910
25	6264-08-11-*-97	23.4 (0.92)	7.1 (0.28)	7.1 (0.28)	8.0 (0.31)	M10	18.0 (0.71)	10.8 (0.43)	17.0 (0.67)	SPP6M8B910
32	6264-10-15-*-97	32.0 (1.26)	7.1 (0.28)	7.1 (0.28)	8.0 (0.31)	M10	20.0 (0.79)	10.8 (0.43)	17.0 (0.67)	SPP10M12B910

NG	ISO-code	Bolt Kit			Seal Kit		Surface Finish
					Nitrile	Fluorocarbon	
10	6264-06-07-*-97	BK505	4x M10 x 35 DIN912 12.9	63 Nm (46.5 lb.-ft.) ±15%	S26-58507-0	S26-58507-5	
25	6264-08-11-*-97	BK485	4x M10 x 45 DIN912 12.9		S26-58475-0	S26-58475-5	
32	6264-10-15-*-97	BK506	6x M10 x 45 DIN912 12.9		S26-58508-0	S26-58508-0	
Prop Section P2*					S26-58473-0	S26-58473-5	

* Please combine seal kit of one size with seal kit of Prop. Section P2 for complete seal kit.