

General Description

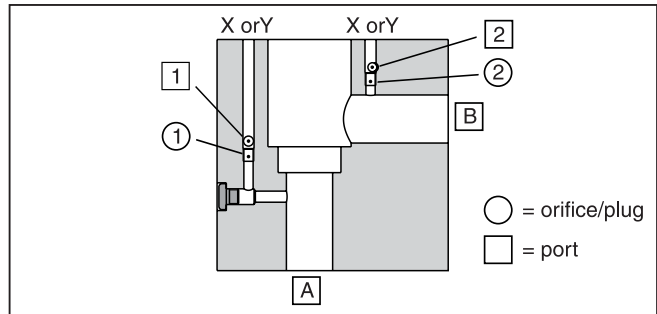
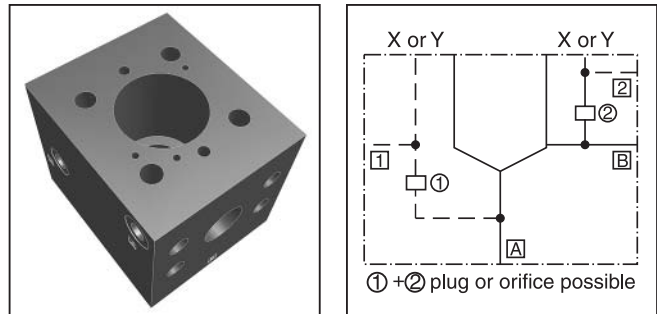
Cartridge Manifold Blocks are bodies for 2/2-way slip-in cartridge valves. They are used in systems with only one cartridge valve without the need to design a specific manifold block.

The pilot ports X and Y can either be connected to A and B or vice versa by changing the mounting position of the cartridge cover.

The wide range of Parker slip-in cartridge valves allows to design solutions for all hydraulic requirements.

Features

- Flanges SAE 61 or SAE 62 respectively CETOP square flange.
- 2 options for pilot oil supply and drain.
- 7 sizes.



Specifications

General	
Interface	ISO 7368-B*-2-A/B
Mounting Position	Unrestricted
Maximum Operating Pressure	138 Bar (2000 PSI) to 420 Bar (6090 PSI) depending on p _{max} of flanges
Flanges	SAE 61 (3000 PSI Series), SAE 62 (6000 PSI Series) ISO 6162, CETOP Square Flange (400 Bar series)

Ordering Information

CB

Cartridge Manifold Block

□

Nominal Size

A

Function In – Out

1

Manifold for 1 Cartridge

□

Flange Size

10

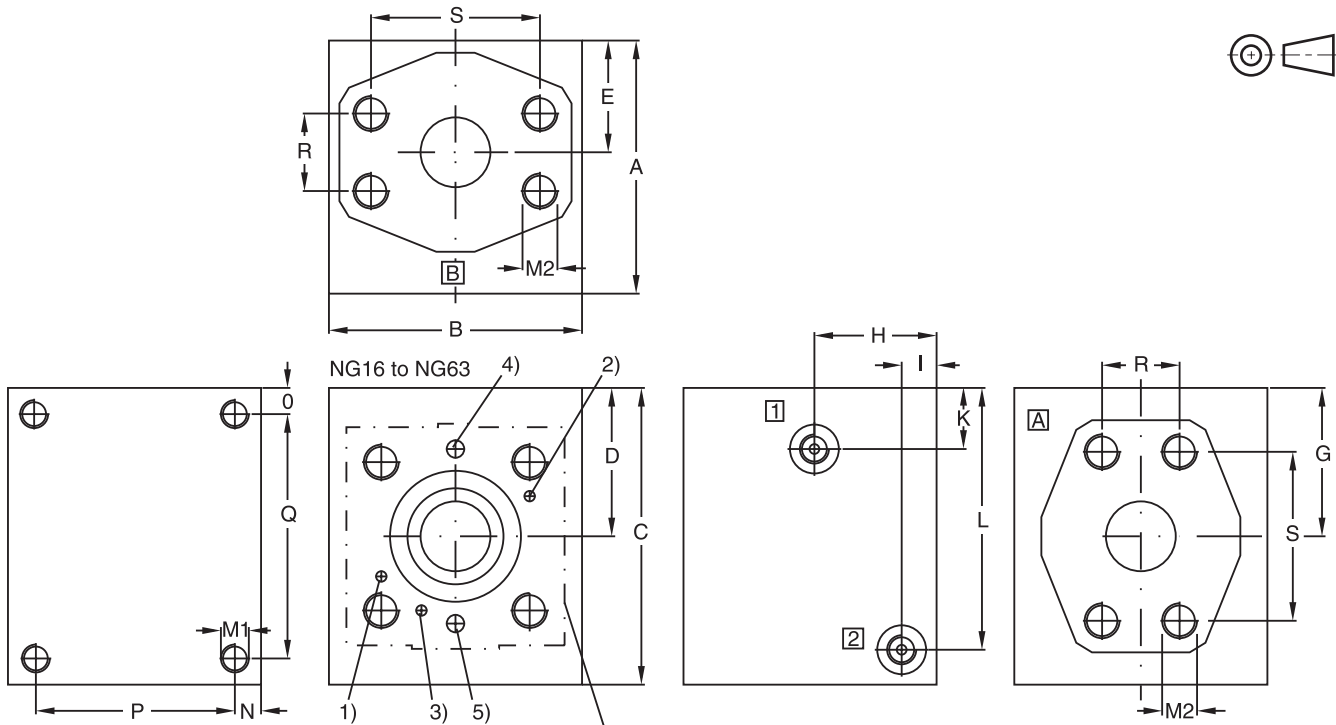
Design Series

W

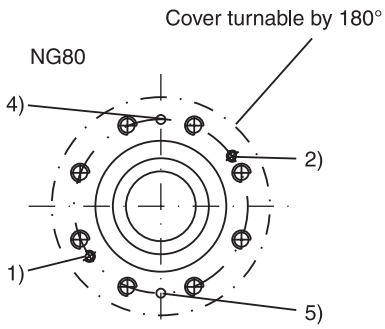
Without Assembly

Code	Description
016	NG16
025	NG25
032	NG32
040	NG40
050	NG50
063	NG63
080	NG80

Code	Size	Flange
34	016	1" SAE 61
35	025	1 1/4" SAE 61
36	032	1 1/2" SAE 61
38	040	2" SAE 61
310	050	2 1/2" SAE 61
312	063	3" SAE 61
64	016	1" SAE 62
65	025	1 1/4" SAE 62
66	032	1 1/2" SAE 62
68	040/050	2" SAE 62
70	063	3 1/2" PN400
80	080	4" PN400



- 1) Location pin for X connected to **B** and **2**, Y connected to **A** and **1**
- 2) Location pin for X connected to **A** and **1**, Y connected to **B** and **2**
- 3) Location pin for pressure functions
- 4) X or Y, orifice/plug **1** (connected to **A** and **1**)
- 5) X or Y, orifice/plug **2** (connected to **B** and **2**)



Dimensions are shown in millimeters only.

Ordering Code	M1	M2	R	S
CB 016 A 1 34 10 W	M8 x 16	M10x20	26.2	52.4
CB 016 A 1 64 10 W	M8 x 16	M12x19	27.8	57.2
CB 025 A 1 35 10 W	M10 x 18	M10x20	30.2	58.7
CB 025 A 1 65 10 W	M10 x 18	M14x22	31.8	66.6
CB 032 A 1 36 10 W	M16 x 30	M12x24	35.7	69.9
CB 032 A 1 66 10 W	M16 x 30	M16x32	36.5	79.3
CB 040 A 1 38 10 W	M16 x 30	M12x24	42.9	77.8
CB 040 A 1 68 10 W	M16 x 30	M20x40	44.5	96.8
CB 050 A 1 310 10 W	M16 x 30	M12x24	50.8	88.9
CB 050 A 1 68 10 W	M16 x 30	M20x40	44.5	96.8
CB 063 A 1 312 10 W	M16 x 30	M16x30	61.9	106.4
CB 063 A 1 70 10 W	M16 x 30	M20x33	102.5	102.5
CB 080 A 1 80 10 W	M16 x 30	M24x50	113.2	113.2

Dimensions are shown in millimeters only.

Ordering Code	Max. Operating Pressure (Bar)	A	B	C	D	E	G	H	I	K	L	N	O	P	Q	Port A and B	Port 1 and 2	Orifice thread 1 and 2	Weight (kg)
CB 016 A 1 34 10 W	350	105.0	80.0	105.0	38.5	34.0	38.5	45.0	13.0	13.5	75.5	10.0	10.0	85.0	85.0	1" SAE 61	G1/4	M5	6.0
CB 016 A 1 64 10 W	420	105.0	80.0	105.0	38.5	34.0	38.5	45.0	13.0	13.5	75.5	10.0	10.0	85.0	85.0	1" SAE 62	G1/4	M5	6.0
CB 025 A 1 35 10 W	280	125.0	100.0	125.0	50.0	43.0	50.0	55.0	15.0	17.0	94.5	10.0	10.0	105.0	105.0	1-1/4" SAE 61	G1/4	M6	11.0
CB 025 A 1 65 10 W	420	125.0	100.0	125.0	50.0	43.0	50.0	55.0	15.0	17.0	94.5	10.0	10.0	105.0	105.0	1-1/4" SAE 62	G1/4	M6	11.0
CB 032 A 1 36 10 W	210	125.0	125.0	145.0	72.5	51.0	72.5	55.0	15.0	31.5	125.0	15.0	15.0	95.0	115.0	1-1/2" SAE 61	G1/4	M6	16.0
CB 032 A 1 66 10 W	420	125.0	125.0	145.0	72.5	51.0	72.5	55.0	15.0	31.5	125.0	15.0	15.0	95.0	115.0	1-1/2" SAE 62	G1/4	M6	16.0
CB 040 A 1 38 10 W	210	145.0	145.0	170.0	85.0	65.0	85.0	70.0	20.0	35.0	150.0	15.0	15.0	115.0	140.0	2" SAE 61	G3/8	M8	25.0
CB 040 A 1 68 10 W	420	145.0	145.0	170.0	85.0	65.0	85.0	70.0	20.0	35.0	150.0	15.0	15.0	115.0	140.0	2" SAE 62	G3/8	M8	25.0
CB 050 A 1 310 10 W	172	155.0	155.0	190.0	95.0	70.0	95.0	70.0	20.0	37.0	170.0	15.0	15.0	125.0	160.0	2-1/2" SAE 61	G3/8	M8	32.0
CB 050 A 1 68 10 W	420	155.0	155.0	190.0	95.0	70.0	95.0	70.0	20.0	37.0	170.0	15.0	15.0	125.0	160.0	2" SAE 62	G3/8	M8	32.0
CB 063 A 1 312 10 W	138	192.0	192.0	240.0	120.0	86.5	120.0	86.5	20.0	45.0	220.0	15.0	15.0	165.0	210.0	3" SAE 61	G3/8	M8	63.0
CB 063 A 1 70 10 W	400	192.0	192.0	240.0	120.0	86.5	120.0	86.5	20.0	45.0	220.0	15.0	15.0	162.0	210.0	3-1/2" PN 400	G3/8	M8	63.0
CB 080 A 1 80 10 W	400	270.0	270.0	270.0	135.0	120.0	135.0	120.0	20.0	35.0	250.0	15.0	15.0	240.0	240.0	4" PN 400	G3/8	M8	139.0

Cartridge Manifold Blocks are supplied with a set of plugs and orifices

Accessories.indd, ddp

