

Characteristics / Ordering Code

Pilot operated pressure relief valves series ZDV are designed for maximum flow rates.

The relief function can be located between P and T, A and T, B and T or A and T + B and T for typical pressure relief functions.

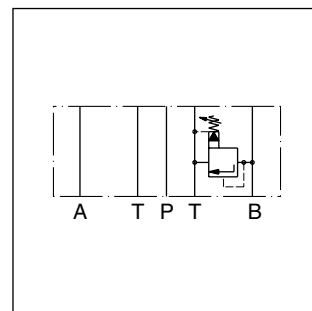
For a pre-charge function the ZDV can be ordered with pressure function between A and B + B and A.

Features

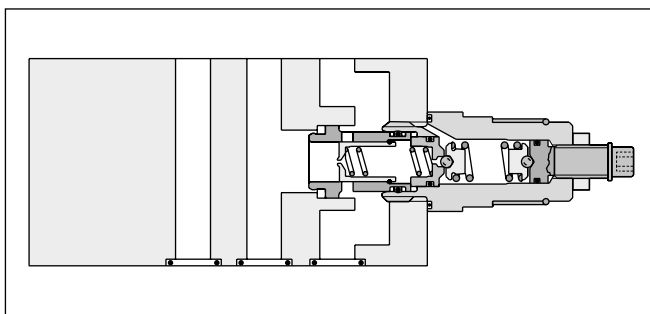
- High flow capacity
- Pressure function in P, A, B or A + B
- Sizes
ZDV01 - NG06 (CETOP 03)
ZDV02 - NG10 (CETOP 05)



ZDV-P01



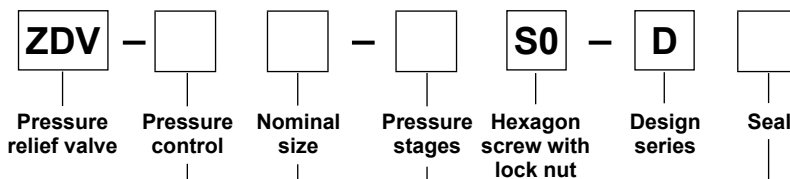
ZDV-B02



ZDV-B02

Ordering code

7



Code	Size	Pressure control
P	NG06/10	P - T
A	NG06/10	A - T
B	NG06/10	B - T
AB	NG06/10	A - T & B - T
ABS	NG06/10	A - B & B - A

Code	Nominal size
01	NG06
02	NG10

Code	Seal
1	NBR
5	FPM

Code	Pressure stages
1	up to 70 bar
5 ¹⁾	up to 350 bar

Ordering code details see end of chapter.

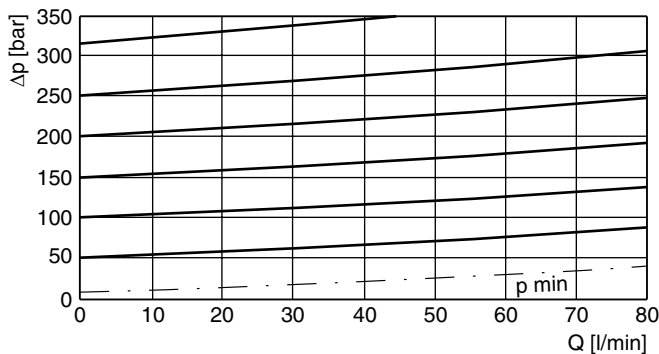
¹⁾ Code ABS and size 10 up to 315 bar.

Technical data

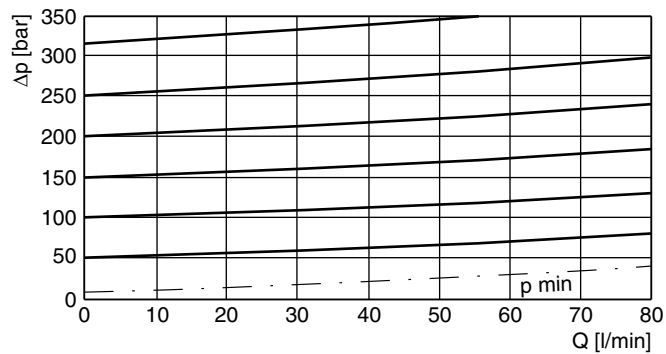
General			
Size		NG06	NG10
Mounting interface		DIN 24340 A6 ISO 4401 NFPA D03	DIN 24340 A10 ISO 4401 NFPA D05
		CETOP RP 121	
Mounting position		unrestricted	
Ambient temperature	[°C]	-20...+60	
MTTF _D value	[years]	150	
Weight	1 cartridge [kg]	1.6	3.0
	2 cartridges [kg]	2.5	3.7
Hydraulic			
Max. operating pressure	[bar]	350 (ZDV-ABS 315)	315
Nominal flow	[l/min]	80	140
Fluid		Hydraulic oil according to DIN 51524	
Fluid temperature	[°C]	-20...+70 (NBR: -25...+70)	
Viscosity	permitted [cSt] / [mm ² /s]	20 ... 400	
	recommended [cSt] / [mm ² /s]	30 ... 80	
Filtration		ISO 4406 (1999); 18/16/13	

p/Q performance curves

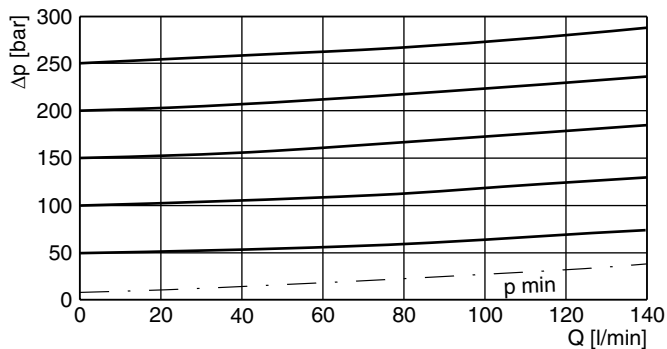
ZDV-P/A/B/ABS01



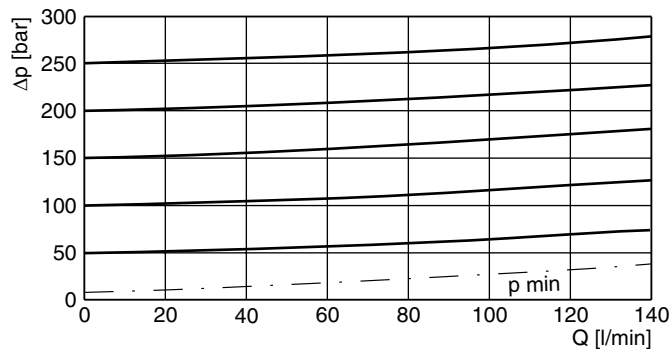
ZDV-AB01



ZDV-P/A/B/AB02



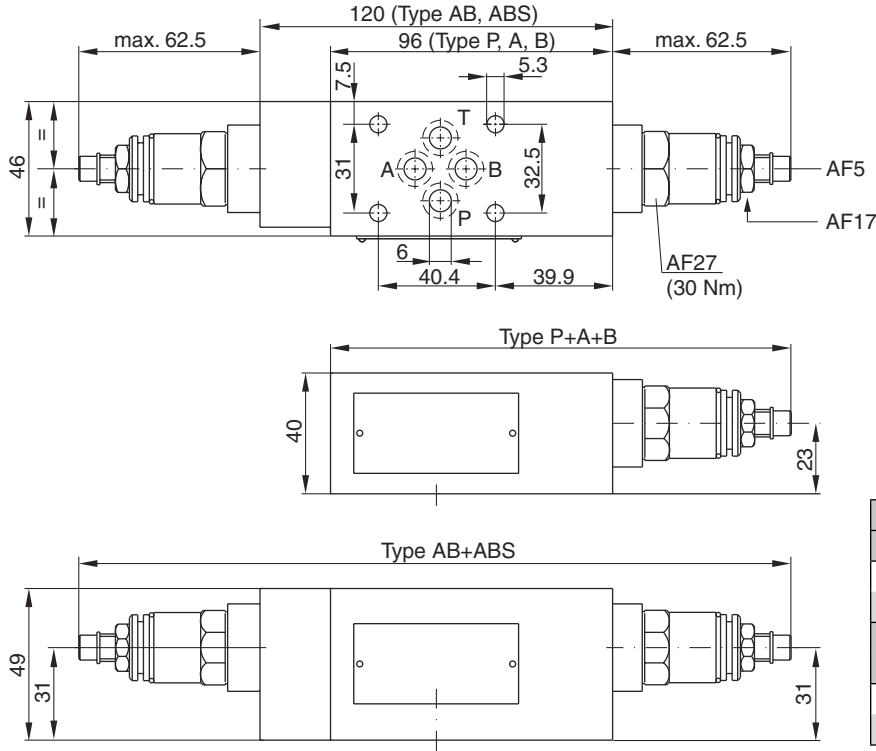
ZDV-ABS02



All characteristic curves measured with HLP46 at 50 °C.

Dimensions

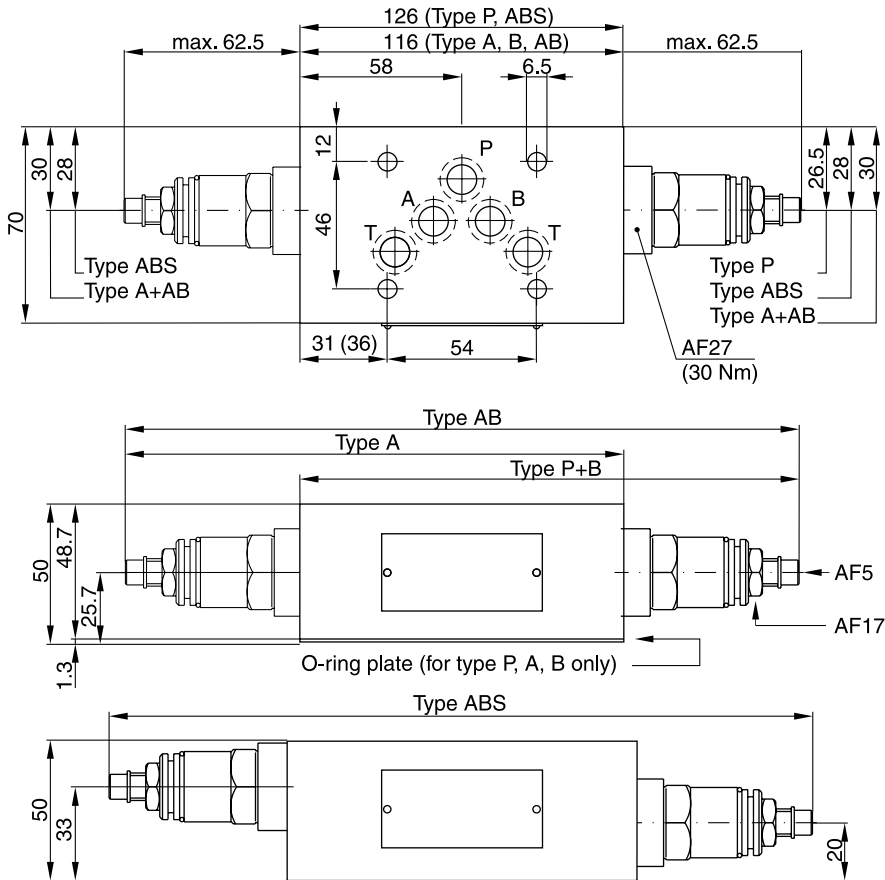
ZDV01



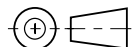
Seal kit	
Seal	Order code
1	098-91182-0
5	098-91183-0
Complete cartridge	
Pressure stage	Order code
1	098-91116-0
5	098-91117-0

7

ZDV02

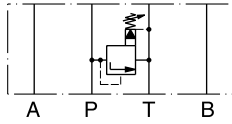


Seal kit	
Seal	Order code
1	098-91076-0
5	098-91077-0
Complete cartridge	
Pressure stage	Order code
1	098-91116-0
5	098-91117-0



ZDV01

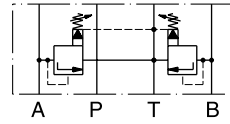
Pressure control P-T



Series
 ZDV-P01-1-S0-D1
 ZDV-P01-5-S0-D1

Order No.
 098-91201-0
 098-91202-0

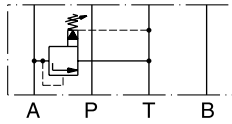
Pressure control A-T & B-T



Series
 ZDV-AB01-1-S0-D1
 ZDV-AB01-5-S0-D1

Order No.
 098-91207-0
 098-91208-0

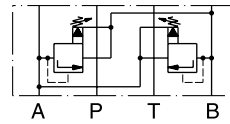
Pressure control A-T



Series
 ZDV-A01-1-S0-D1
 ZDV-A01-5-S0-D1

Order No.
 098-91203-0
 098-91204-0

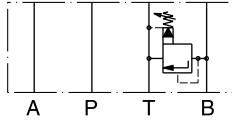
Pressure control A-B & B-A



Series
 ZDV-ABS01-1-S0-D1
 ZDV-ABS01-5-S0-D1

Order No.
 098-91209-0
 098-91210-0

Pressure control B-T

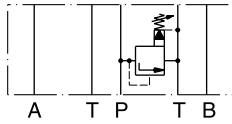


Series
 ZDV-B01-1-S0-D1
 ZDV-B01-5-S0-D1

Order No.
 098-91205-0
 098-91206-0

ZDV02

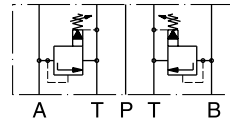
Pressure control P-T



Series
 ZDV-P02-1-S0-D1
 ZDV-P02-5-S0-D1

Order No.
 098-91034-0
 098-91035-0

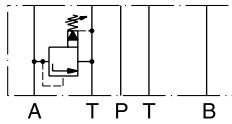
Pressure control A-T & B-T



Series
 ZDV-AB02-1-S0-D1
 ZDV-AB02-5-S0-D1

Order No.
 098-91040-0
 098-91041-0

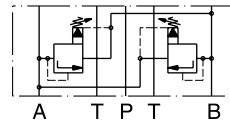
Pressure control A-T



Series
 ZDV-A02-1-S0-D1
 ZDV-A02-5-S0-D1

Order No.
 098-91036-0
 098-91037-0

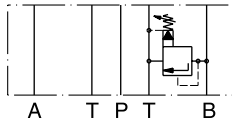
Pressure control A-B & B-A



Series
 ZDV-ABS02-1-S0-D1
 ZDV-ABS02-5-S0-D1

Order No.
 098-91042-0
 098-91043-0

Pressure control B-T



Series
 ZDV-B02-1-S0-D1
 ZDV-B02-5-S0-D1

Order No.
 098-91038-0
 098-91039-0

