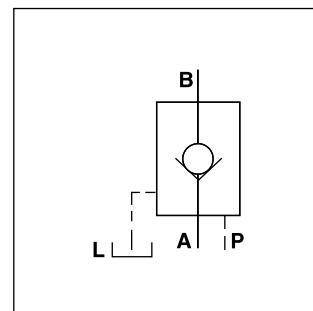
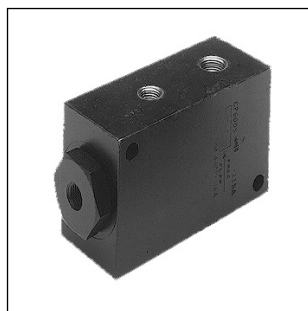


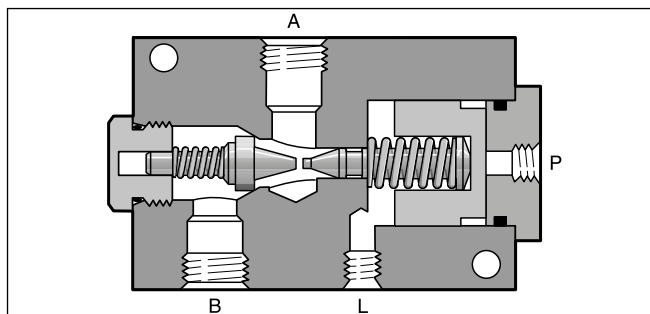
Pilot operated check valves series CP allow free flow in one direction (A to B).

The counter direction (B to A) is blocked. By applying pilot pressure, the poppet can be lifted from its seat against the pressure in port B. Thus flow in the counter direction is also possible. There are 1 and 2 stage poppets available with pilot ratios of 1 : 5 and 1 : 40, to suit different operating conditions.



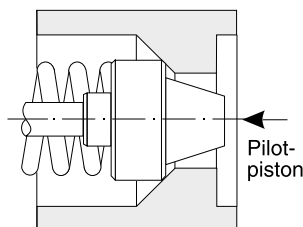
Technical data

Size		600	1200
Max. operating pressure	[bar]	210	210
Max. pilot pressure	[bar]	210	70
Flow Q_{max} at Δp 2.7 bar	[l/min]	30	95
Nominal size		3/8	3/4
Weight	[kg]	4	7



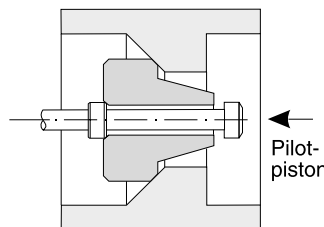
Pilot ratios

Poppet 1 stage



Surface ratio 5 : 1 (pilot spool-poppet surface) for quick response time without decompression.

Poppet 2 stage



Surface ratio 40 : 1 (pilot spool decompression pin surface) for low shock or oscillation performance from decompression.

Ordering code

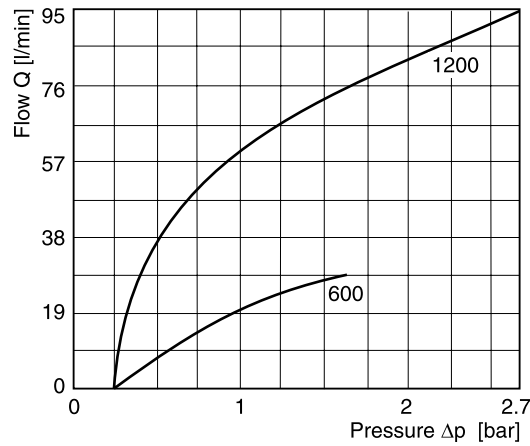
	CP		S		M	
Thread type	Check valve, pilot operated	Port size	Steel body	Pilot ratio	Steel poppet	Seal

Code	Thread								
omit	NPTF						Code	Seal	
9	BSP						omit	NBR	
							V	FPM	

Code	Size								
600	3/8						Code	Pilot ratio	Stage
1200	3/4						5	5 : 1	1
							40	40 : 1	2

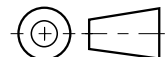
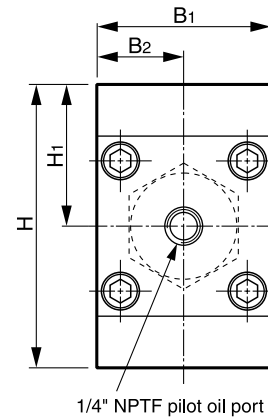
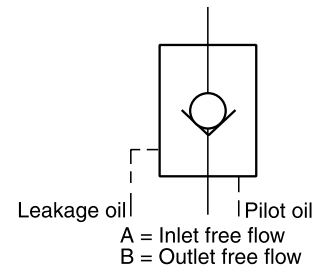
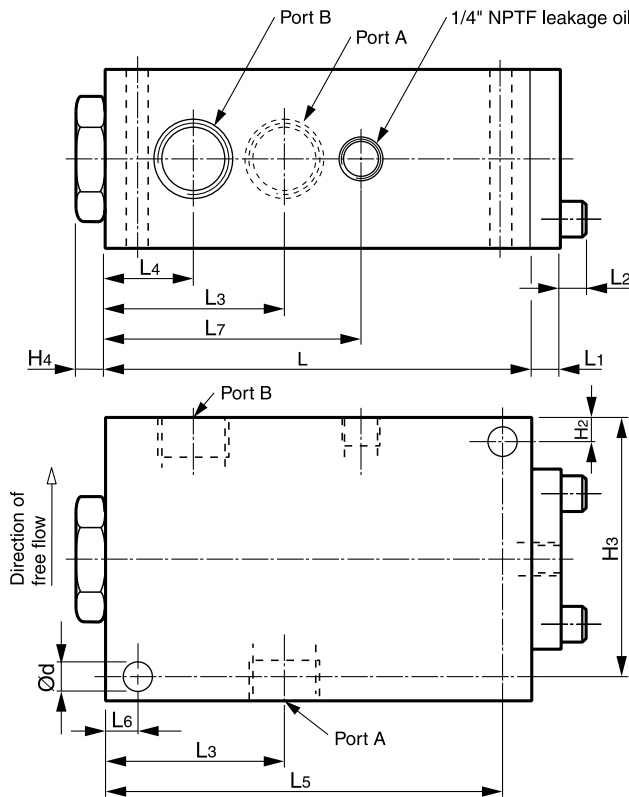
**Bold letters =
Short-term availability**

$\Delta p/Q$ performance curves



All characteristic curves measured with HLP46 at 50 °C.

Dimensions



10

Size	A, B	L ₃	B ₁	B ₂	H ₁	H	L ₄	L ₇	H ₄	L	L ₁	H ₂	H ₃	L ₆	L ₅	Ød	W
9CP600S	G3/8	53.3	50.8	25.4	38.1	76.2	25.4	76.2	10.4	120.7	10.7	9.4	66.5	9.4	111	9.1	-
9CP1200S	G3/4	63.5	63.5	31.8	50.8	101.6	31.8	91.2	10.7	152.4	11.43	11.2	90.4	11.2	141.2	10.7	7.9