

Technical Information

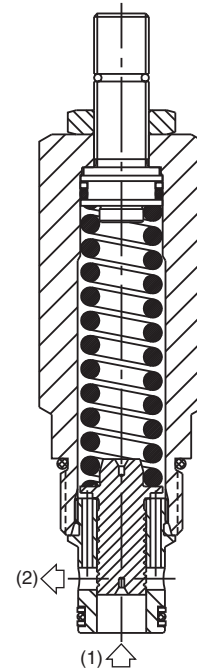
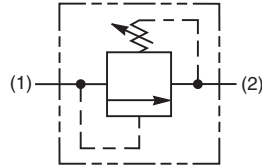
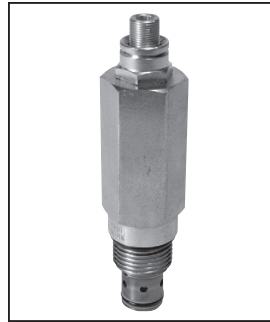
- CV** Check Valves
- SH** Shuttle Valves
- LM** Load/Motor Controls
- FC** Flow Controls
- PC** Pressure Controls
- LE** Logic Elements
- DC** Directional Controls
- MV** Manual Valves
- SV** Solenoid Valves
- PV** Proportional Valves
- CE** Coils & Electronics
- BC** Bodies & Cavities
- TD** Technical Data

General Description

Direct Acting Spool-Type Relief Valve. For additional information see Technical Tips on pages PC1-PC6.

Features

- High flow capacity
- Fast response with good stability
- Low pressure setting
- Full 420 Bar 6000 PSI tank line back pressure
- Hardened working parts for maximum durability
- Adjustable, preset and tamperproof versions available
- All external parts zinc plated



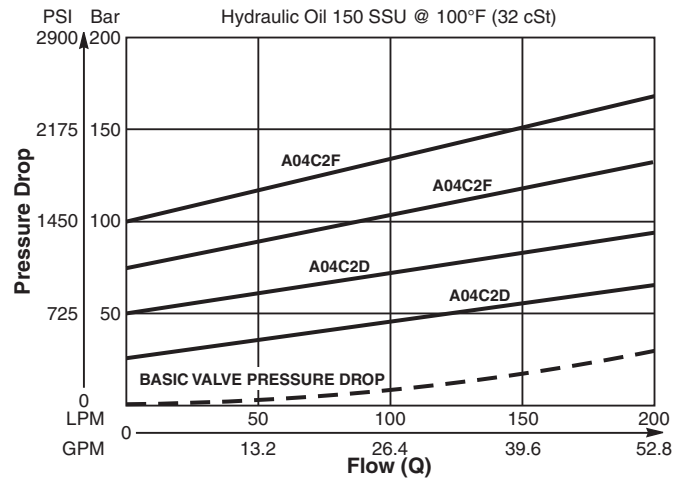
Specifications

| | |
|--------------------------------------|--|
| Rated Flow | 200 LPM (53 GPM) |
| Maximum Inlet Pressure | D - 2-50 Bar (29-725 PSI) F - 2-100 Bar (29-1450 PSI) |
| Maximum Pressure Setting | 420 Bar (6000 PSI) |
| Sensitivity: Pressure/Turn | D 5.2 Bar (76 PSI) F 10.1 Bar (147 PSI) |
| Maximum Tank Pressure | 420 Bar (6000 PSI) |
| Leakage at 150 SSU (32 cSt) | 25 ml/min. @ 50 Bar (725 PSI) |
| Cartridge Material | All parts steel. All operating parts hardened steel. |
| Operating Temp. Range/Seals | -34°C to +121°C (Nitrile) (-30°F to +250°F) -26°C to +204°C (Fluorocarbon) (-15°F to +400°F) |
| Fluid Compatibility/Viscosity | Mineral-based or synthetic with lubricating properties at viscosities of 45 to 2000 SSU (6 to 420 cSt) |
| Filtration | ISO-4406 18/16/13, SAE Class 4 |
| Approx. Weight | 0.28 kg (0.62 lbs.) |
| Cavity | C10-2 (See BC Section for more details) |
| Form Tool | Rougher None Finisher NFT10-2F |

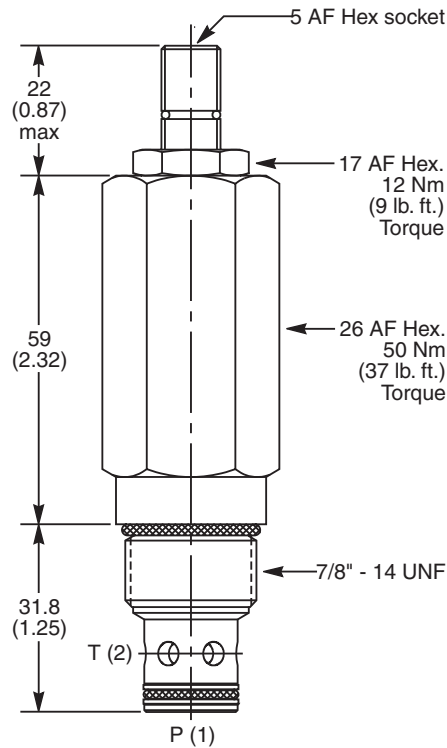
Performance Curve

(Pressure rise through cartridge only)

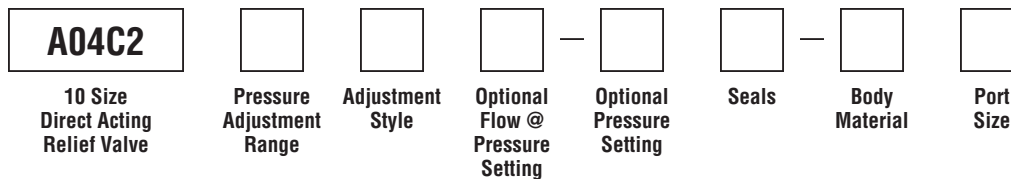
Flow vs. Inlet Pressure



Dimensions Millimeters (Inches)



Ordering Information



| Code | Pressure Adjustment Range |
|------|-----------------------------|
| D | 2 - 50 Bar (29 - 725 PSI) |
| F | 2 - 100 Bar (29 - 1450 PSI) |

| Code | Adjustment Style / Kit No. |
|------|-------------------------------|
| Z | Screw Adjust (Std.) |
| W | Knob Adjust (ASV014975) |
| T | Tamper Resistant Cap (TC1130) |

| Optional Flow @ Pressure Setting | |
|---|--|
| If you require a maximum pressure setting at a flow rate, please enter it here in Liters per minute (LPM). Standard setting: 15 LPM (4.0 GPM) | |

| Optional Pressure Setting | |
|---|--|
| Specify setting if required (Bar) | |
| A04C2D Standard Setting: 25 Bar (360 PSI) @ 15 LPM (4.0 GPM) | |
| A04C2F Standard Setting: 50 Bar (725 PSI) @ 15 LPM (4.0 GPM) | |

| Code | Seals / Kit No. |
|------|---------------------------------------|
| N | Nitrile, Buna-N (Std.) / (SK30503N-1) |
| V | Fluorocarbon / (SK30503V-1) |

| Code | Body Material |
|------|---------------|
| Omit | Steel |
| A | Aluminum |

| Code | Port Size | Body Part No. |
|------|----------------|---------------|
| Omit | Cartridge Only | |
| 6T | SAE-6 | (B10-2-*6T) |
| 8T | SAE-8 | (B10-2-*8T) |

* Add "A" for aluminum, omit for steel.