

Technical Information

- CV** Check Valves
- SH** Shuttle Valves
- LM** Load/Motor Controls
- FC** Flow Controls
- PC** Pressure Controls
- LE** Logic Elements
- DC** Directional Controls
- MV** Manual Valves
- SV** Solenoid Valves
- PV** Proportional Valves
- CE** Coils & Electronics
- BC** Bodies & Cavities
- TD** Technical Data

General Description

Direct Acting Poppet-Type Relief Valve.
For additional information see
Technical Tips on pages PC1-PC6.

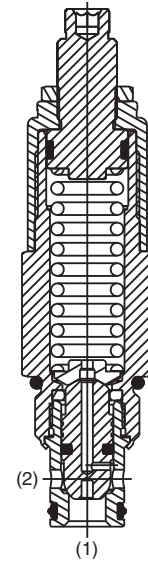
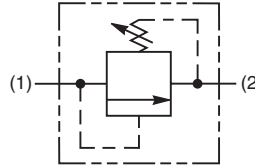
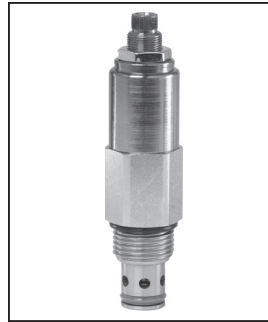


Features

- Hardened, precision ground parts for durability
- Internal mechanical stop limits poppet travel eliminating spring solidification
- Spherical poppets for low leakage
- “D”-Ring eliminates backup rings
- All external parts zinc plated
- Fast response

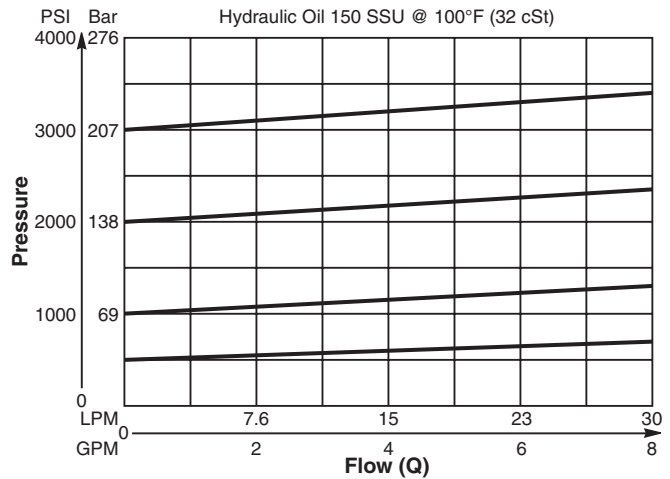
Specifications

| | |
|--|--|
| Rated Flow | 38 LPM (10 GPM) |
| Maximum Inlet Pressure | 250 Bar (3600 PSI) |
| Maximum Pressure Setting | 210 Bar (3000 PSI) |
| Sensitivity: Pressure/Turn | 03 2.7 Bar (39 PSI) 09 7.2 Bar (104 PSI) 18 16 Bar (234 PSI) 30 103.4 Bar (1500 PSI) |
| Maximum Tank Pressure | 210 Bar (3000 PSI) |
| Reseat Pressure | 85% of crack pressure |
| Leakage at 150 SSU (32 cSt) | 5 drops/min. (.33 cc/min.) @ 75% of crack pressure |
| Cartridge Material | All parts steel. All operating parts hardened steel. |
| Operating Temp. Range (Ambient) | -45°C to +132°C (“D”-Ring) (-50°F to +270°F) -34°C to +121°C (Nitrile) (-30°F to +250°F) -26°C to +204°C (Fluorocarbon) (-15°F to +400°F) |
| Fluids | Mineral-based or synthetic with lubricating properties at viscosities of 45 to 2000 SSU (6 to 420 cSt) |
| Filtration | ISO-4406 18/16/13, SAE Class 4 |
| Approx. Weight | .23 kg (0.5 lbs.) |
| Cavity | C10-2 (See BC Section for more details) |
| Form Tool | Rougher None Finisher NFT10-2F |

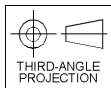
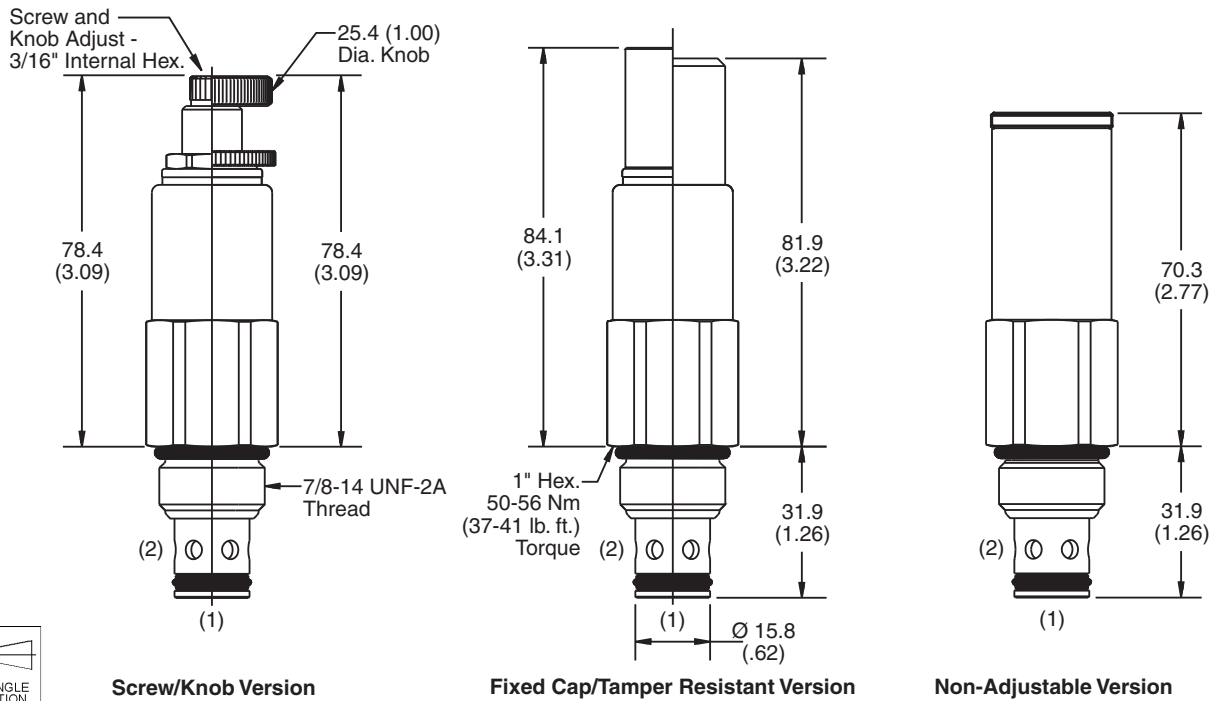


Performance Curve
Flow vs. Inlet Pressure

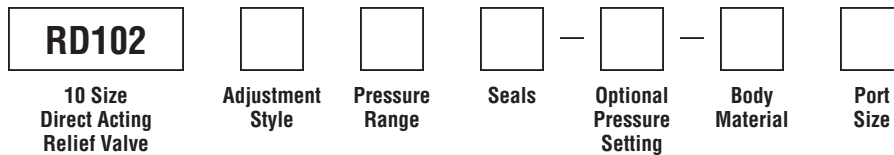
(Pressure rise through cartridge only)



Dimensions Millimeters (Inches)



Ordering Information



| Code | Adjustment Style / Kit No. |
|----------|---------------------------------|
| F | Fixed style, preset at factory. |
| K | Knob Adjust (717784-10) |
| N | Non-Adjustable |
| S | Screw Adjust |
| T | Tamper Resistant Cap (717943) |

| Code | Seals / Kit No. |
|-------------|----------------------------|
| Omit | "D"-Ring / (SK10-2) |
| N | Nitrile / (SK10-2N) |
| V | Fluorocarbon / (SK10-2V) |

| Code | Body Material |
|-------------|---------------|
| Omit | Steel |
| A | Aluminum |

| Code | Pressure Range |
|-----------|--|
| 03 | 3.5 - 20.7 Bar (50 - 300 PSI) Standard Setting: 10.3 Bar (150 PSI) @ .95 LPM (.25 GPM) |
| 09 | 7 - 62 Bar (100 - 900 PSI) Standard Setting: 31.0 Bar (450 PSI) @ .95 LPM (.25 GPM) |
| 18 | 13.8 - 124 Bar (200 - 1800 PSI) Standard Setting: 62.1 Bar (900 PSI) @ .95 LPM (.25 GPM) |
| 30 | 41.4 - 207 Bar (600 - 3000 PSI) Standard Setting: 103.4 Bar (1500 PSI) @ .95 LPM (.25 GPM) |

| Optional Pressure Setting |
|--|
| Pressure ÷ 10 i.e. 235 = 2350 PSI (Omit if standard setting is used) Setting Range: 100 to 3000 PSI All settings at .95 LPM (.25 GPM) |

| Code | Port Size | Body Part No. |
|-------------|-----------------------|---------------|
| Omit | Cartridge Only | |
| 6T | SAE-6 | (B10-2-*6T) |
| 8T | SAE-8 | (B10-2-*8T) |

* Add "A" for aluminum, omit for steel.

- CV
- Check Valves
- SH
- Shuttle Valves
- LM
- Load/Motor Controls
- FC
- Flow Controls
- PC
- Pressure Controls
- LE
- Logic Elements
- DC
- Directional Controls
- MV
- Manual Valves
- SV
- Solenoid Valves
- PV
- Proportional Valves
- CE
- Coils & Electronics
- BC
- Bodies & Cavities
- TD
- Technical Data