

Technical Information

- CV** Check Valves
- SH** Shuttle Valves
- LM** Load/Motor Controls
- FC** Flow Controls
- PC** Pressure Controls
- LE** Logic Elements
- DC** Directional Controls
- MV** Manual Valves
- SV** Solenoid Valves
- PV** Proportional Valves
- CE** Coils & Electronics
- BC** Bodies & Cavities
- TD** Technical Data

General Description

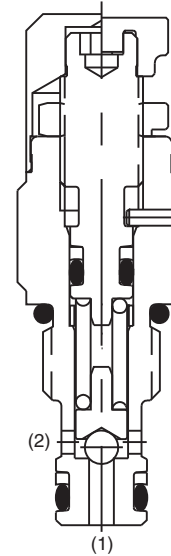
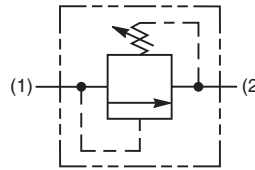
Direct Acting Ball-Type Relief Valve. For additional information see Technical Tips on pages PC1-PC6.

Features

- Hardened, precision ground parts for durability
- Compact size for reduced space requirements
- Low leakage design
- Fast response
- All external parts zinc plated

Specifications

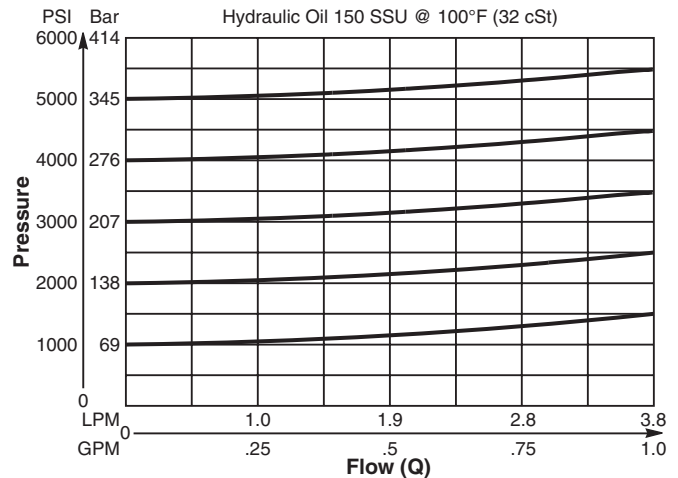
| | |
|--------------------------------------|--|
| Rated Flow | 3.8 LPM (1 GPM) |
| Maximum Inlet Pressure | 380 Bar (5500 PSI) |
| Maximum Pressure Setting | 350 Bar (5000 PSI) |
| Sensitivity: Pressure/Turn | 30 105 Bar (1522 PSI) 50 118 Bar (1710 PSI) |
| Maximum Tank Pressure | 350 Bar (5000 PSI) |
| Reseat Pressure | 80% of crack pressure |
| Leakage at 150 SSU (32 cSt) | 10 drops/min. (.66 cc/min.) @75% of crack pressure |
| Cartridge Material | All parts steel. All operating parts hardened steel. |
| Operating Temp. Range/Seals | -34°C to +121°C (Nitrile) (-30°F to +250°F) -26°C to +204°C (Fluorocarbon) (-15°F to +400°F) |
| Fluid Compatibility/Viscosity | Mineral-based or synthetic with lubricating properties at viscosities of 45 to 2000 SSU (6 to 420 cSt) |
| Filtration | ISO-4406 18/16/13, SAE Class 4 |
| Approx. Weight | .03 kg (.07 lbs.) |
| Cavity | C04-2 (See BC Section for more details) |
| Form Tool | Rougher None Finisher NFT04-2F |



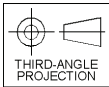
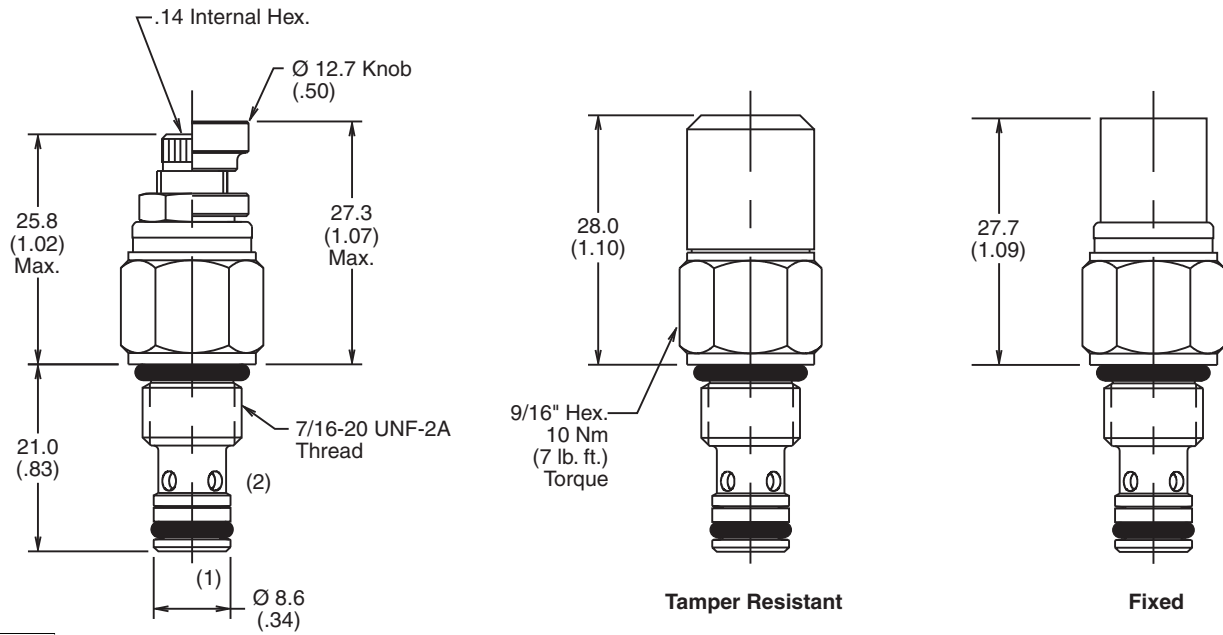
Performance Curve

Flow vs. Inlet Pressure

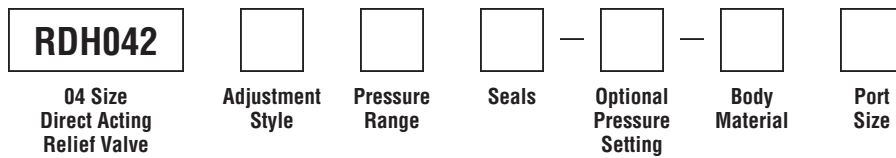
(Pressure rise through cartridge only)



Dimensions Millimeters (Inches)



Ordering Information



| Code | Adjustment Style / Kit No. |
|------|---------------------------------|
| F | Fixed style, preset at factory. |
| K | Knob Adjust (852544) |
| S | Screw Adjust |
| T | Tamper Resistant Cap (852519) |

| Code | Pressure Range |
|------|--|
| 30 | 6.9 - 207 Bar (100 - 3000 PSI) Standard Setting: 103 Bar (1500 PSI) @ 1.9 LPM (.5 GPM) |
| 50* | 103 - 345 Bar (1500 - 5000 PSI) Standard Setting: 172 Bar (2500 PSI) @ 1.9 LPM (.5 GPM) |

* If using 50 Pressure Range,
 Steel Body Required.

| Code | Seals / Kit No. |
|------|--------------------------|
| Omit | Nitrile / (SK04-2) |
| V | Fluorocarbon / (SK04-2V) |

| Optional Pressure Setting |
|---|
| Pressure ÷ 10 i.e. 235 = 2350 PSI (Omit if standard setting is used) Setting Range: 100 to 5000 PSI All settings at 1.9 LPM (.5 GPM) |

| Code | Body Material |
|------|---------------|
| Omit | Steel |
| A | Aluminum |

| Code | Port Size | Body Part No. |
|------|----------------|---------------|
| Omit | Cartridge Only | |
| 4T | SAE-4 | (B04-2-*4T) |

* Add "A" for aluminum, omit for steel.