

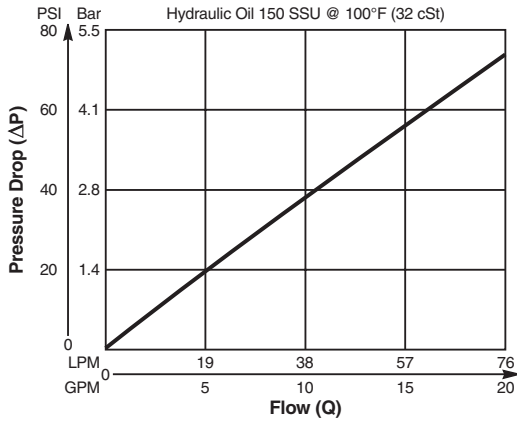
- CV** Check Valves
- SH** Shuttle Valves
- LM** Load/Motor Controls
- FC** Flow Controls
- PC** Pressure Controls
- LE** Logic Elements
- DC** Directional Controls
- MV** Manual Valves
- SV** Solenoid Valves
- PV** Proportional Valves
- CE** Coils & Electronics
- CB** Cartridge Bodies
- BC** Bodies & Cavities
- TD** Technical Data

Valve/Cavity Compatibility

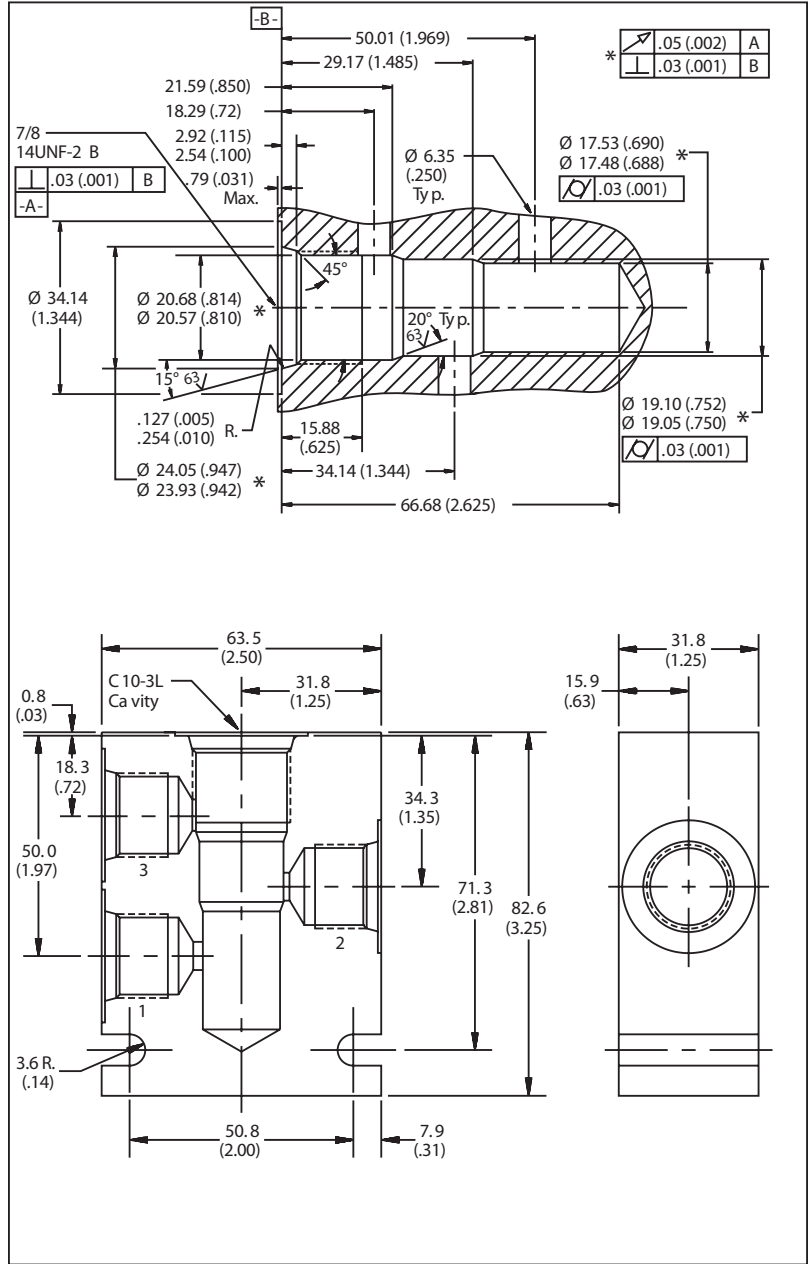
For additional information see Technical Tips on pages BC1-BC2.

CAVITY	VALVE				
	Winner's Circle	Parker	Waterman	FPS	CEC
Winner's Circle					
Parker		X	X	X	
Waterman		X	X	X	
FPS		X	X	X	
CEC					

Performance Curve
Pressure Drop vs. Flow



Dimensions Millimeters (Inches)



Ordering Information

B10	—	3L	—		—	
10 Size		3-Way Long Cavity		Body Material		Port Size
Code	Body Material	Code	Port Size			
Omit	Steel	8T	SAE - 8			
A	Aluminum					

Form Tool: Rougher NFT10L-3R
 Finisher NFT10L-3F
Weight: .77 kg (1.7 lbs.)