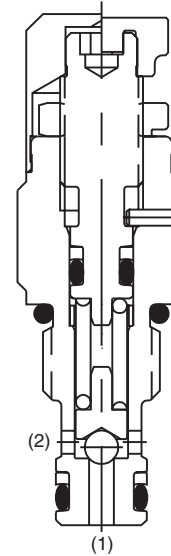
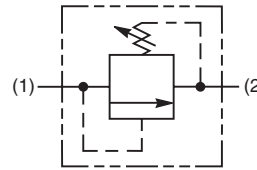


**General Description**

Direct Acting Ball-Type Relief Valve. For additional information see Technical Tips on pages PC1-PC6.

**Features**

- Hardened, precision ground parts for durability
- Compact size for reduced space requirements
- Low leakage design
- Fast response
- All external parts zinc plated



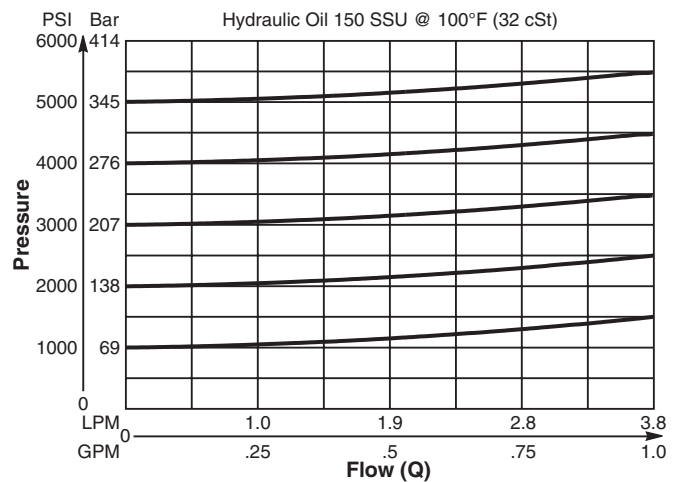
**Specifications**

Rated Flow	3.8 LPM (1 GPM)
Maximum Inlet Pressure	380 Bar (5500 PSI)
Maximum Pressure Setting	350 Bar (5000 PSI)
Sensitivity: Pressure/Turn	<b>30</b> 105 Bar (1522 PSI) <b>50</b> 118 Bar (1710 PSI)
Maximum Tank Pressure	350 Bar (5000 PSI)
Reseat Pressure	80% of crack pressure
Leakage at 150 SSU (32 cSt)	10 drops/min. (.66 cc/min.) @75% of crack pressure
Cartridge Material	All parts steel. All operating parts hardened steel.
Operating Temp. Range/Seals	-34°C to +121°C (Nitrile) (-30°F to +250°F) -26°C to +204°C (Fluorocarbon) (-15°F to +400°F)
Fluid Compatibility/ Viscosity	Mineral-based or synthetic with lubricating properties at viscosities of 45 to 2000 SSU (6 to 420 cSt)
Filtration	ISO-4406 18/16/13, SAE Class 4
Approx. Weight	0.03 kg (0.07 lbs.)
Cavity	C04-2 (See BC Section for more details)
Form Tool	Rougher None Finisher NFT04-2F

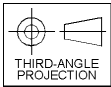
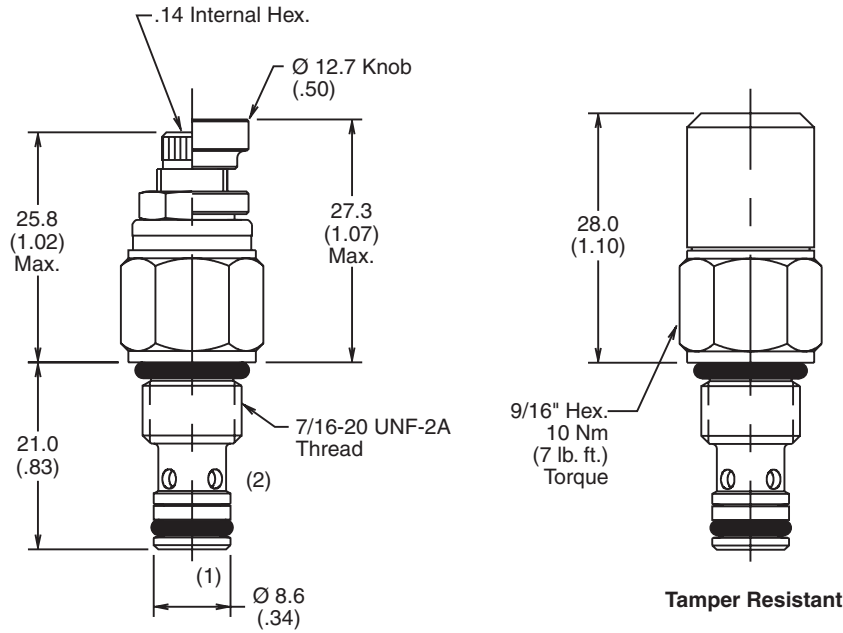
**Performance Curve**

**Flow vs. Inlet Pressure**

(Pressure rise through cartridge only)



**Dimensions** Millimeters (Inches)



**Ordering Information**

<b>RDH042</b>	<input type="checkbox"/>	<input type="checkbox"/>	<input type="checkbox"/>
04 Size Direct Acting Relief Valve	Adjustment Style	Pressure Range	Seals

**Highlighted** represents preferred options that offer the shortest lead times. Other options may be available, but at extended lead times.

Code	Adjustment Style / Kit No.
K	Knob Adjust (852544)
<b>S</b>	<b>Screw Adjust</b>
T	Tamper Resistant Cap (852519)

Code	Seals / Kit No.
Omit	<b>Nitrile / (SK04-2)</b>
V	Fluorocarbon / (SK04-2V)

Code	Pressure Range
30	6.9 - 207 Bar (100 - 3000 PSI) Standard Setting: 103 Bar (1500 PSI) @ 1.9 LPM (.5 GPM)
50*	103 - 345 Bar (1500 - 5000 PSI) Standard Setting: 172 Bar (2500 PSI) @ 1.9 LPM (.5 GPM)

\* If using 50 Pressure Range, Steel Body is required.

Order Bodies Separately  
 See section BC

<b>B04</b>	-	<b>2</b>	-	<input type="checkbox"/>
04 size		2-Way Cavity		Port Size

Code	Porting / Body Material
4T	SAE-4 / Steel (5000 PSI)
A4T	SAE-4 / Aluminium (3000 PSI)

CV
Check Valves
SH
Shuttle Valves
LM
Load/Motor Controls
FC
Flow Controls
<b>PC</b>
Pressure Controls
LE
Logic Elements
DC
Directional Controls
MV
Manual Valves
SV
Solenoid Valves
PV
Proportional Valves
CE
Coils & Electronics
CB
Cartrpак Bodies
BC
Bodies & Cavities
TD
Technical Data