

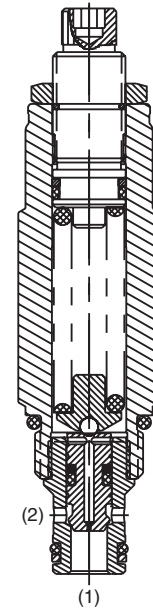
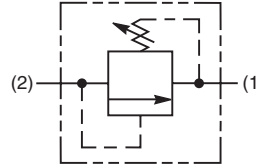
- CV**  
Check Valves
- SH**  
Shuttle Valves
- LM**  
Load/Motor Controls
- FC**  
Flow Controls
- PC**  
Pressure Controls
- LE**  
Logic Elements
- DC**  
Directional Controls
- MV**  
Manual Valves
- SV**  
Solenoid Valves
- PV**  
Proportional Valves
- CE**  
Coils & Electronics
- CB**  
Cartridge Bodies
- BC**  
Bodies & Cavities
- TD**  
Technical Data

## General Description

Differential Area Relief Valve. For additional information see Technical Tips on pages PC1-PC6.

## Features

- Hardened, precision ground parts for durability
- Spherical poppets for low leakage
- High flow capacity
- Internal mechanical stop limits poppet travel eliminating spring solidification
- All external parts zinc plated



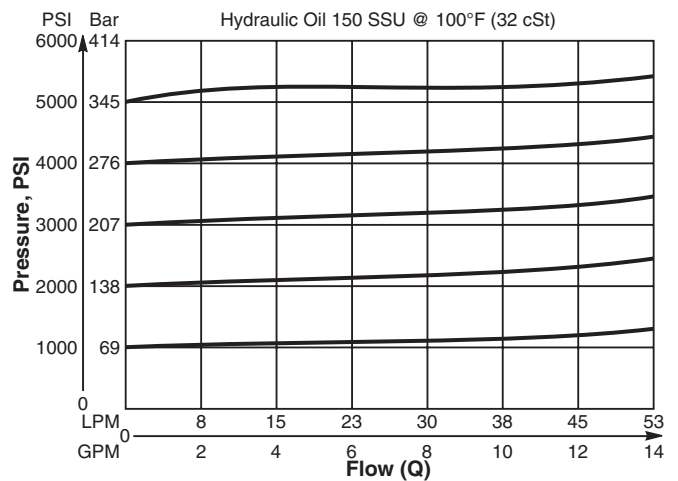
## Specifications

Rated Flow	45 LPM (12 GPM)
Maximum Inlet Pressure	380 Bar (5500 PSI)
Maximum Pressure Setting	350 Bar (5000 PSI)
Sensitivity: Pressure/Turn	<b>15</b> 15 Bar (218 PSI) <b>30</b> 27 Bar (396 PSI) <b>50</b> 42 Bar (614 PSI)
Maximum Tank Pressure	350 Bar (5000 PSI)
Reseat Pressure	75% of crack pressure
Leakage at 150 SSU (32 cSt)	10 drops/min. (.67 cc/min.) @75% of crack pressure
Cartridge Material	All parts steel. All operating parts hardened steel.
Operating Temp. Range/Seals	-34°C to +121°C (Nitrile) (-30°F to +250°F) -26°C to +204°C (Fluorocarbon) (-15°F to +400°F)
Fluid Compatibility/Viscosity	Mineral-based or synthetic with lubricating properties at viscosities of 45 to 2000 SSU (6 to 420 cSt)
Filtration	ISO-4406 18/16/13, SAE Class 4
Approx. Weight	0.19 kg (0.43 lbs.)
Cavity	C08-2 (See BC Section for more details)
Form Tool	Rougher None Finisher NFT08-2F

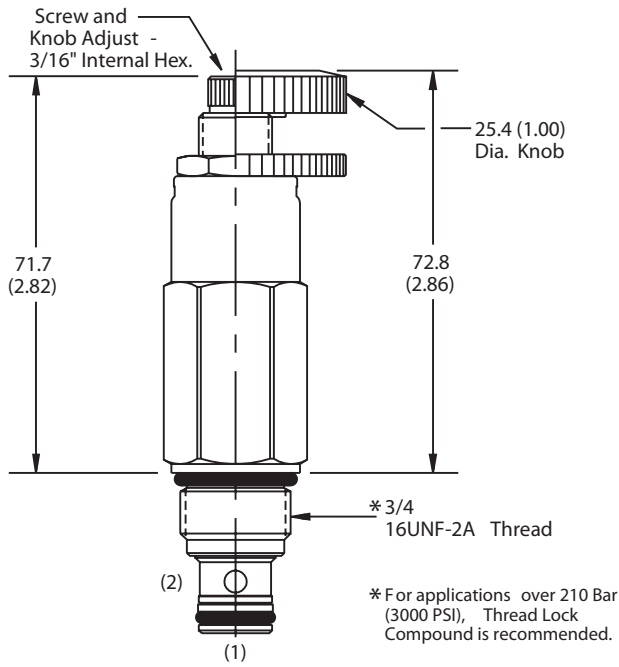
## Performance Curve

### Flow vs. Inlet Pressure

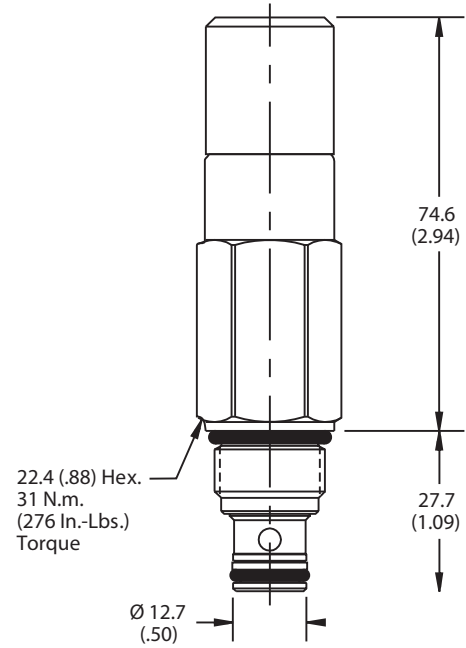
(Pressure rise through cartridge only)



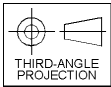
**Dimensions** Millimeters (Inches)



Screw/Knob Version



Tamper Resistant Version



**Ordering Information**

<b>RDH083</b>			
08 Size Differential Area Relief Valve	Adjustment Style	Pressure Range	Seals

**Highlighted** represents preferred options that offer the shortest lead times. Other options may be available, but at extended lead times.

Code	Adjustment Style / Kit No.
K	Knob Adjust (717784-10)
<b>S</b>	<b>Screw Adjust</b>
T	Tamper Resistant Cap (718083)

Code	Seals / Kit No.
<b>Omit</b>	<b>Nitrile / (SK08-2)</b>
V	Fluorocarbon / (SK08-2V)

Code	Pressure Range
15	6.9 - 103 Bar (100 - 1500 PSI) Standard Setting: 51.7 Bar (750 PSI) @ crack pressure approximately .95 LPM (.25 GPM)
<b>30</b>	<b>69 - 207 Bar (1000 - 3000 PSI)</b> Standard Setting: <b>103 Bar (1500 PSI) @ crack pressure</b> approximately .95 LPM (.25 GPM)
<b>50</b>	<b>138 - 345 Bar (2000 - 5000 PSI)</b> Standard Setting: <b>172.4 Bar (2500 PSI) @ crack pressure</b> approximately .95 LPM (.25 GPM)

Order Bodies Separately  
 See section BC

<b>B08</b>	—	<b>2</b>	—	
08 size		2-Way Cavity		Port Size

Code	Porting / Body Material
6T	SAE-6 / Steel (5000 PSI)
A6T	SAE-6 / Aluminium (3000 PSI)

CV
Check Valves
SH
Shuttle Valves
LM
Load/Motor Controls
FC
Flow Controls
<b>PC</b>
Pressure Controls
LE
Logic Elements
DC
Directional Controls
MV
Manual Valves
SV
Solenoid Valves
PV
Proportional Valves
CE
Coils & Electronics
CB
Cartrpак Bodies
BC
Bodies & Cavities
TD
Technical Data