

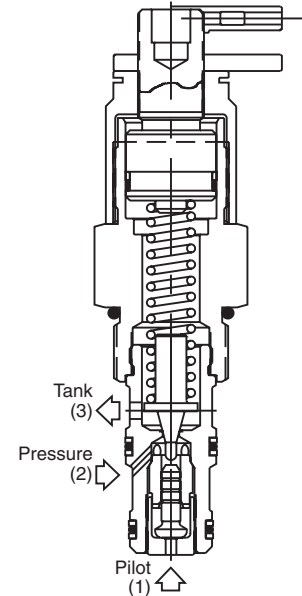
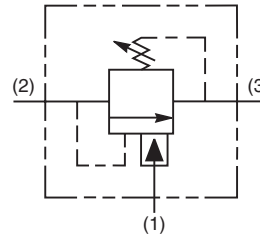
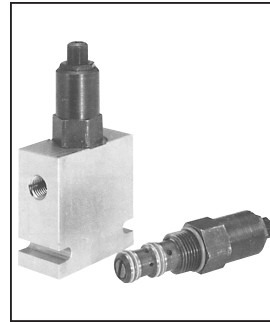
- CV**  
Check Valves
- SH**  
Shuttle Valves
- LM**  
Load/Motor Controls
- FC**  
Flow Controls
- PC**  
Pressure Controls
- LE**  
Logic Elements
- DC**  
Directional Controls
- MV**  
Manual Valves
- SV**  
Solenoid Valves
- PV**  
Proportional Valves
- CE**  
Coils & Electronics
- CB**  
Cartridge Bodies
- BC**  
Bodies & Cavities
- TD**  
Technical Data

### General Description

Differential Area Unloading Relief Valve. This valve is best suited for low flow accumulator unloading circuits or can be used as remote pilot valves. They provide a fixed percentage between load and unload pressures. For additional information see Technical Tips on pages PC1-PC6.

### Features

- Low hysteresis
- Cartridge design
- All external parts zinc plated



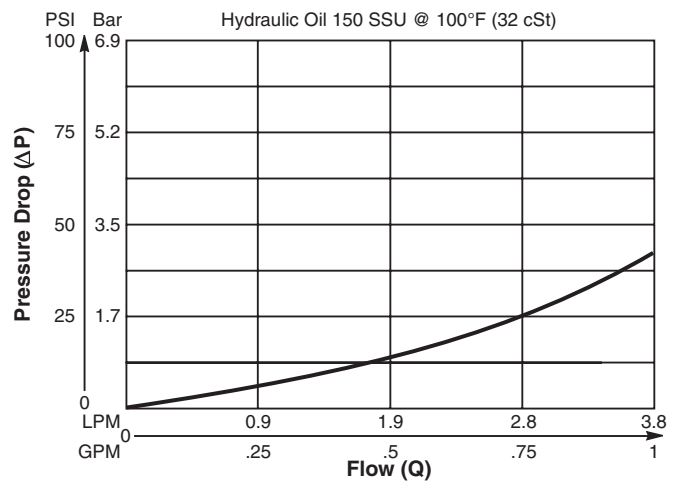
### Specifications

Rated Flow	3.75 LPM (1 GPM)
Maximum Pilot Flow	0.94 LPM (0.25 GPM)
Maximum Inlet Pressure	245 Bar (3500 PSI)
Maximum Pressure Setting	210 Bar (3000 PSI)
Maximum Tank Pressure	210 Bar (3000 PSI)
Leakage at 150 SSU (32 cSt)	Port 2 to 3 10 drops/min. (0.66 cc/min.) Port 1 to 2 60 drops/min. (3 cc/min.)
Cartridge Material	All parts steel. All operating parts hardened steel.
Operating Temp. Range/Seals	-34°C to +121°C (Nitrile) (-30°F to +250°F) -26°C to +204°C (Fluorocarbon) (-15°F to +400°F)
Fluid Compatibility/Viscosity	Mineral-based or synthetic with lubricating properties at viscosities of 45 to 2000 SSU (6 to 420 cSt)
Filtration	ISO-4406 18/16/13, SAE Class 4
Approx. Weight	0.23 kg (0.50 lbs.)
Cavity	C10-3 (See BC Section for more details)
Form Tool	Rougher NFT10-3R Finisher NFT10-3F

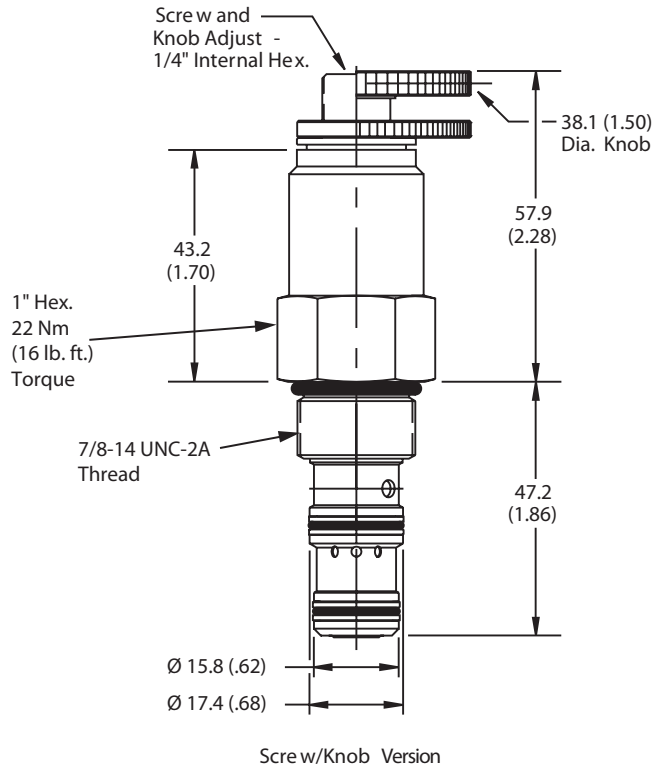
### Performance Curve

#### Inlet Flow vs. Pressure Drop

Without pilot assist (Through cartridge only)



**Dimensions** Millimeters (Inches)



**Ordering Information**

<b>RU101</b>	□	□	<b>C</b>	□
10 Size Differential Area Unloading Relief Valve	Adjustment Style	Pressure Range	Reload	Seals

**Highlighted** represents preferred options that offer the shortest lead times. Other options may be available, but at extended lead times.

Code	Adjustment Style / Kit No.
K	Knob Adjust (840208K)
<b>S</b>	<b>Screw Adjust</b>

Code	Reload
<b>C</b>	<b>80% ±5% of Pressure Setting</b>

Code	Pressure Range
<b>10</b>	<b>6.9 - 69 Bar (100 - 1000 PSI) Standard Setting: 34.5 Bar (500 PSI) @ 1.1 LPM (.3 GPM)</b>
<b>30</b>	<b>13.8 - 207 Bar (200 - 3000 PSI) Standard Setting: 103.5 Bar (1500 PSI) @ 1.1 LPM (.3 GPM)</b>

Code	Seals / Kit No.
<b>Omit</b>	<b>Nitrile / (SK10-3)</b>
V	Fluorocarbon / (SK10-3V)

Order Bodies Separately  
 See section BC

<b>B10</b>	-	<b>3</b>	-	□
10 size		3-Way Cavity		Port Size

Code	Porting / Body Material
8T	SAE-8 / Steel (5000 PSI)
A8T	SAE-8 / Aluminium (3000 PSI)

CV
Check Valves
SH
Shuttle Valves
LM
Load/Motor Controls
FC
Flow Controls
<b>PC</b>
Pressure Controls
LE
Logic Elements
DC
Directional Controls
MV
Manual Valves
SV
Solenoid Valves
PV
Proportional Valves
CE
Coils & Electronics
CB
Cartrpак Bodies
BC
Bodies & Cavities
TD
Technical Data