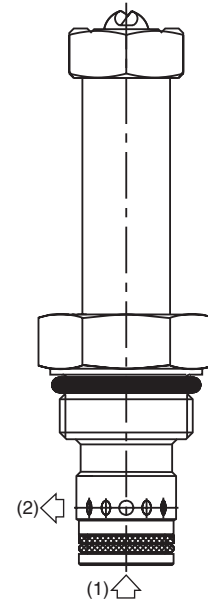
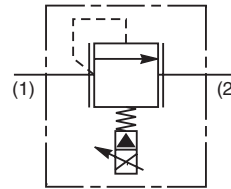


General Description

Proportional Relief Valve. Decreasing Pressure With Increasing Current. For additional information see Technical Tips on pages PV1-PV5.

Features

- Pilot operated spool-type design
- Precise setting of factory preset pressure in de-energized mode
- One piece cartridge housing ensures internal concentricity
- Coil: Waterproof, hermetically sealed, requires no O’Rings; Symmetrical coil can be reversed without affecting performance.



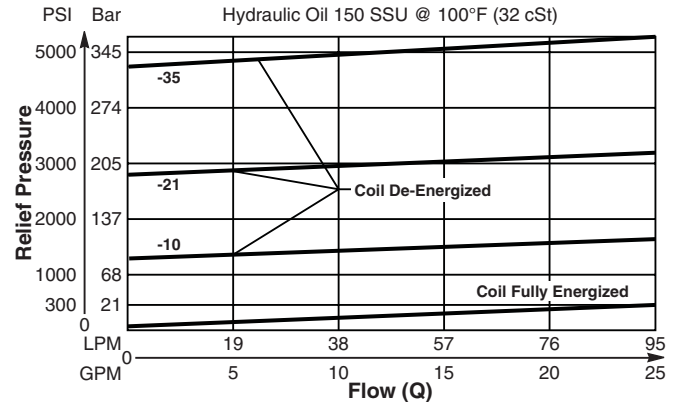
Specifications

| | |
|---|--|
| Rated Flow (At 300 PSI ΔP) When Coil is Fully Energized | 95 LPM (25 GPM) |
| Factory Set Relief Pressure When Coil De-Energized Measured at 45 LPM (12 GPM) | 10C 103 Bar (1000 PSI) 21C 210 Bar (3000 PSI) 35C 350 Bar (5000 PSI) |
| Hysteresis @ 200 Hz PWM | < 7% of Maximum Pressure Setting |
| Response Time At 75% of Nominal Voltage Change (Measured To 90% of Press. Change) | To Unload 45ms To Load 25 ms |
| Cartridge Material | All parts steel. All operating parts hardened steel. |
| Operating Temp. Range/Seals | -34°C to +121°C (Nitrile) (-30°F to +250°F) -26°C to +204°C (Fluorocarbon) (-15°F to +400°F) |
| Fluid Compatibility/Viscosity | Mineral-based or synthetic with lubricating properties at viscosities of 45 to 2000 SSU (6 to 420 cSt) |
| Filtration | ISO-4406 18/16/13, SAE Class 4 |
| Approx. Weight | 0.14 kg (0.30 lbs.) |
| Cavity | C10-2 (See BC Section for more details) |

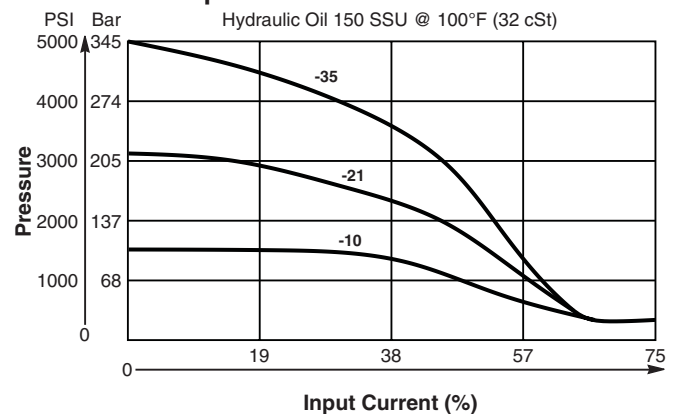
Performance Curves

▲ PWM Current Regulator Recommended

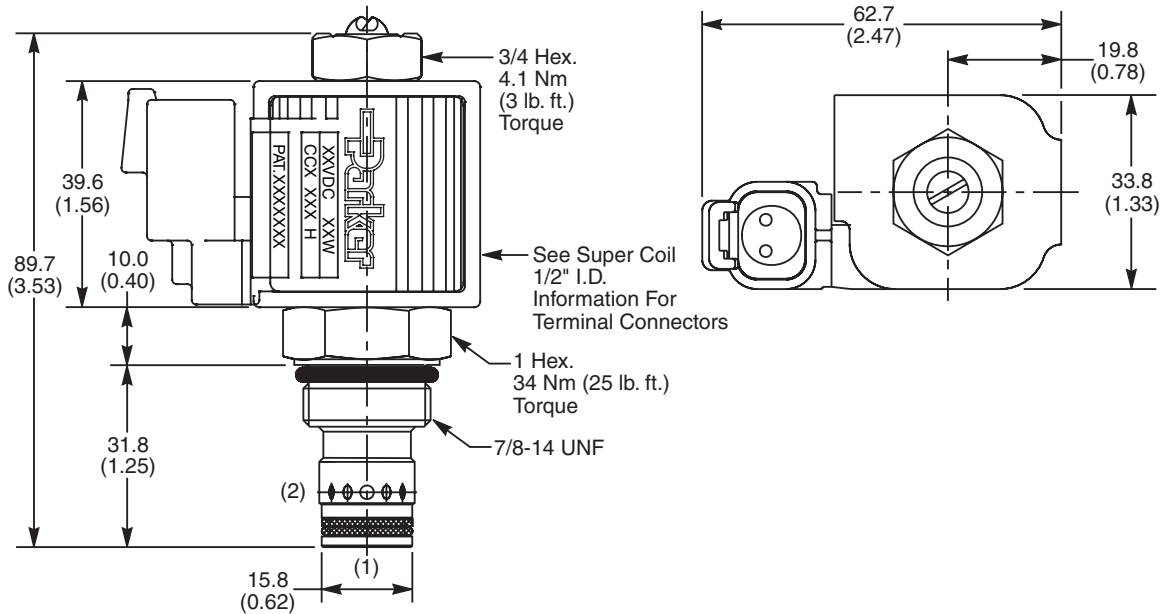
Relief Performance



Pressure vs. Input Current



Dimensions Millimeters (Inches)



Ordering Information

| | | |
|---|--------------------------|--------------------------|
| AP04G2YR | <input type="checkbox"/> | <input type="checkbox"/> |
| 10 Size Proportional Relief Valve | Style | Seals |

Highlighted represents preferred options that offer the shortest lead times. Other options may be available, but at extended lead times.

Coil(s) sold separately. Please see section CE of this catalog, 1/2" Super-Coil (CC series), for ordering information.

| Code | Cracking Pressure |
|------------|---------------------------|
| 10C | 104 Bar (1500 PSI) |
| 21C | 210 Bar (3000 PSI) |
| 35C | 350 Bar (5000 PSI) |

| Code | Seals / Kit No. |
|----------|--------------------------------------|
| N | Nitrile / Buna-N (SK30503N-1) |
| V | Fluorocarbon / (SK30503V-1) |

Order Bodies Separately
 See section BC

| | | | | |
|------------|---|-----------------|---|--------------------------|
| B10 | - | 2 | - | <input type="checkbox"/> |
| 10 size | | 2-Way Cavity | | Port Size |

| Code | Porting / Body Material |
|------|------------------------------|
| 8T | SAE-8 / Steel (5000 PSI) |
| A8T | SAE-8 / Aluminium (3000 PSI) |

- CV**
- Check Valves
- SH**
- Shuttle Valves
- LM**
- Load/Motor Controls
- FC**
- Flow Controls
- PC**
- Pressure Controls
- LE**
- Logic Elements
- DC**
- Directional Controls
- MV**
- Manual Valves
- SV**
- Solenoid Valves
- PV**
- Proportional Valves
- CE**
- Coils & Electronics
- CB**
- Carpak Bodies
- BC**
- Bodies & Cavities
- TD**
- Technical Data