

- CV**
Check Valves
- SH**
Shuttle Valves
- LM**
Load/Motor Controls
- FC**
Flow Controls
- PC**
Pressure Controls
- LE**
Logic Elements
- DC**
Directional Controls
- MV**
Manual Valves
- SV**
Solenoid Valves
- PV**
Proportional Valves
- CE**
Coils & Electronics
- CB**
Cartridge Bodies
- BC**
Bodies & Cavities
- TD**
Technical Data

General Description

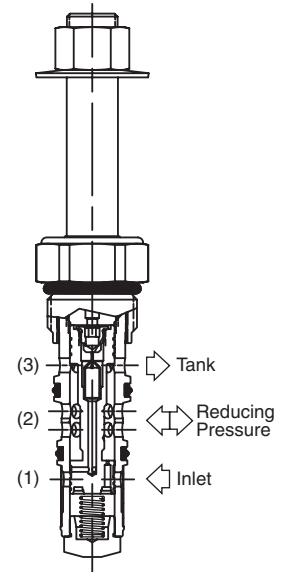
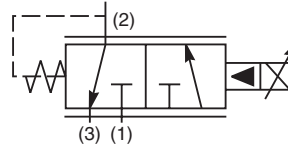
Pilot Operated, Normally Closed, Proportional Pressure Reducing/Relieving Valve. For additional information see Technical Tips on pages PV1-PV5.

Features

- High flow capacity
- Low hysteresis
- 400 Hz PWM signal preferred
- No dynamic seals
- Polyurethane "D"-Ring eliminates need for backup rings

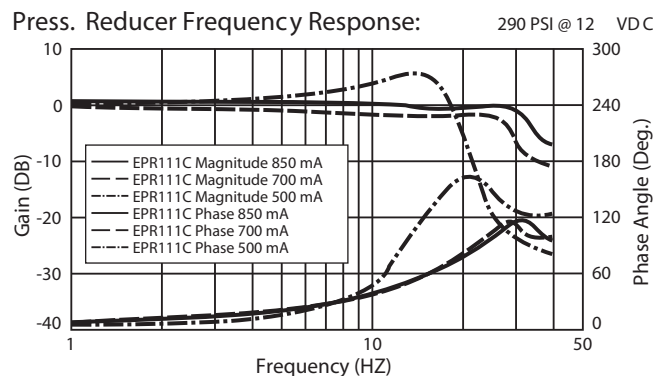
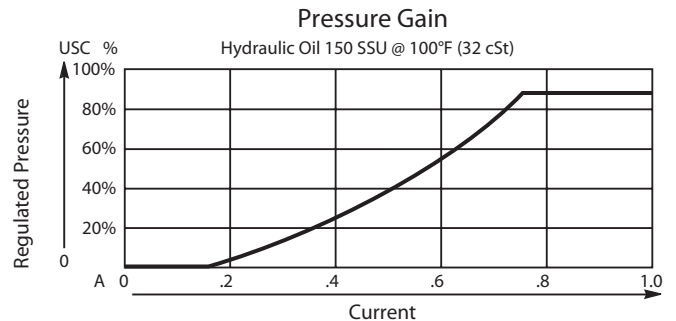
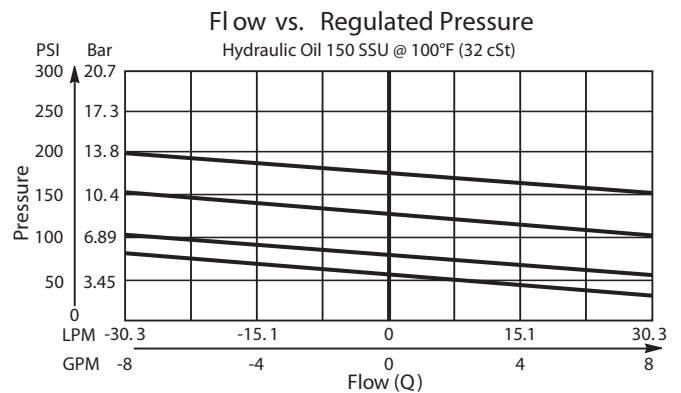
Specifications

Rated Flow	37.5 LPM (10 GPM)
Maximum Input Pressure at Port 2	350 Bar (5000 PSI)
Maximum Internal Leakage	5 LPM (0.13 GPM) @ 20.7 Bar (300 PSI) 0.95 LPM (0.25 GPM) @ 207 Bar (3000 PSI)
Hysteresis @ 400 Hz PWM	4% with 60% duty cycle
Power Consumption	9 watts at max. reduced pressure
Frequency	200-600 Hz (PWM)
Maximum Control Current	12 VDC .90A 24 VDC .45A
Cartridge Material	All parts steel. All operating parts hardened steel.
Operating Temp. Range/Seals	-37°C to +97°C ("D"-Ring) (-35°F to +200°F) -34°C to +121°C (Nitrile) (-30°F to +250°F) -26°C to +204°C (Fluorocarbon) (-15°F to +400°F)
Fluid Compatibility/Viscosity	Mineral-based or synthetic with lubricating properties at viscosities of 45 to 2000 SSU (6 to 420 cSt)
Filtration	ISO-4406 18/16/13, SAE Class 4
Approx. Weight	0.59 kg (1.3 lbs.)
Cavity	C10-3L (See BC Section for more details)

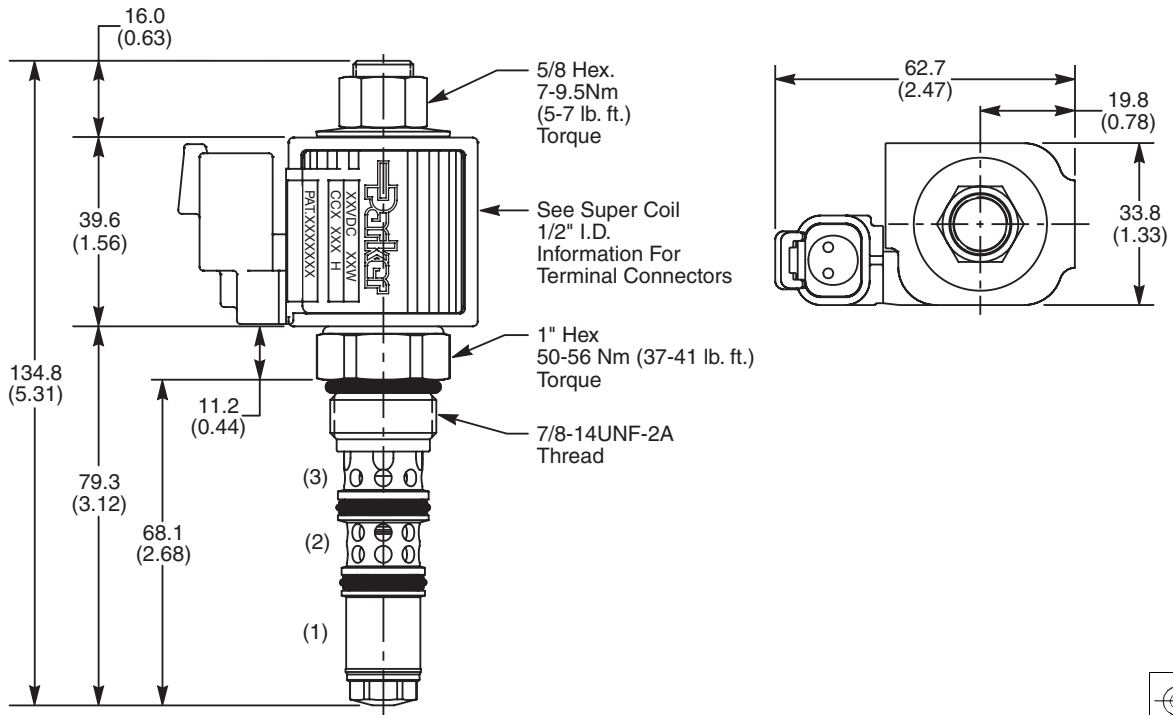


Performance Curves

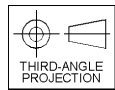
▲ PWM Current Regulator Recommended



Dimensions Millimeters (Inches)



NOTE: Requires C10-3L Cavity



Ordering Information

EPR111	C		
11 Size Proportional Red./Rel. Valve	Style	Pressure Range	Seals

Highlighted represents preferred options that offer the shortest lead times. Other options may be available, but at extended lead times.

Coil(s) sold separately. Please see section CE of this catalog, 1/2" Super-Coil (CC series), for ordering information.

Code	Style
C	Normally Closed, Pilot Operated

Code	Seals / Kit No.
Omit	"D"-Ring / (SK10-3L)
N	Nitrile / Buna-N (SK10-3LN)
V	Fluorocarbon / (SK10-3LV)

Code	Pressure Range
02	13.8 Bar (200 PSI)
03	20.7 Bar (300 PSI)
05	34.5 Bar (500 PSI)
10	68.9 Bar (1000 PSI)
20	138 Bar (2000 PSI)
30	207 Bar (3000 PSI)
40	276 Bar (4000 PSI)

Order Bodies Separately
 See section BC

B10	3L	
10 size	3-Way Long Cavity	Port Size

Code	Porting / Body Material
8T	SAE-8 / Steel (5000 PSI)
A8T	SAE-8 / Aluminium (3000 PSI)



CV
Check Valves
SH
Shuttle Valves
LM
Load/Motor Controls
FC
Flow Controls
PC
Pressure Controls
LE
Logic Elements
DC
Directional Controls
MV
Manual Valves
SV
Solenoid Valves
PV
Proportional Valves
CE
Coils & Electronics
CB
Cartrpak Bodies
BC
Bodies & Cavities
TD
Technical Data