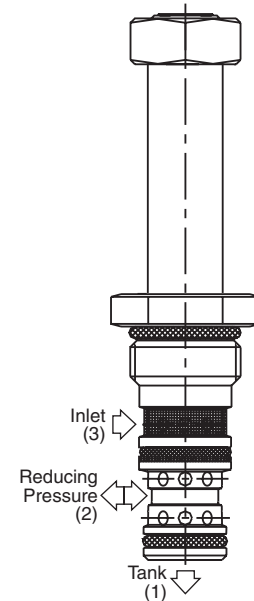
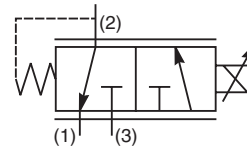


**General Description**

3 Way, 2 Position, Proportional Pressure Reducing Valve. Side Cylinder Port. For additional information see Technical Tips on pages PV1-PV5.

**Features**

- Minimal Hysteresis
- One piece cartridge housing ensures internal concentricity
- Coil: Waterproof, hermetically sealed, requires no O’Rings; Symmetrical coil can be reversed without affecting performance.
- Nonmagnetic spool and housing assembly



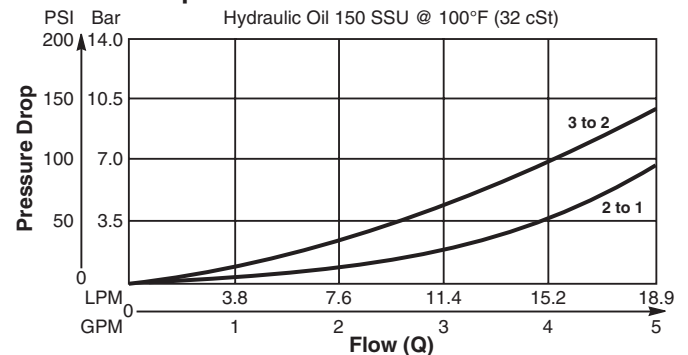
**Specifications**

Rated Flow (At 70 PSI ΔP)	19 LPM (5 GPM)
Factory Set Relief Pressure When Coil De-Energized Measured at 45 LPM (12 GPM)	<b>02</b> 12/17 Bar (180/240 PSI) <b>03</b> 19/26 Bar (270/375 PSI) <b>05</b> 31/40 Bar (450/580 PSI) <b>06</b> 41/51 Bar (600/740 PSI) <b>09</b> 65/79 Bar (940/1140 PSI) <b>18</b> 114/145 Bar (1650/2100 PSI)
Max. Input Press. At Port 3	210 Bar (3000 PSI)
Max. Drainage Flow In Regulating Zone	100 cc/min. When De-Energized 750 cc/min. In Regulating Zone At 21 Bar (300 PSI) Input Pressure
Hysteresis @ 100 Hz PWM	3.5%
Dead End Response Time	10 ms At Step Signal 0 To 75% of Nominal Voltage
Cartridge Material	All parts steel. All operating parts hardened steel.
Operating Temp. Range/Seals	-34°C to +121°C (Nitrile) (-30°F to +250°F) -26°C to +204°C (Fluorocarbon) (-15°F to +400°F)
Fluid Compatibility/ Viscosity	Mineral-based or synthetic with lubricating properties at viscosities of 45 to 2000 SSU (6 to 420 cSt)
Filtration	ISO-4406 18/16/13, SAE Class 4
Approx. Weight	0.08 kg (0.17 lbs.)
Cavity	C08-3 (See BC Section for more details)

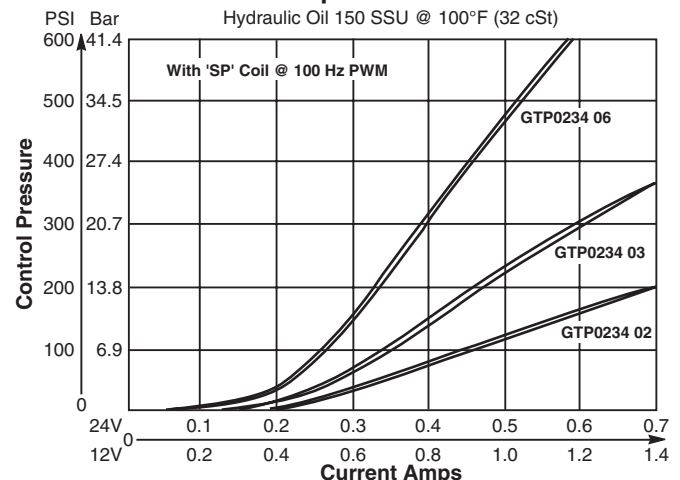
**Performance Curves**

▲ PWM Current Regulator Recommended

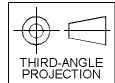
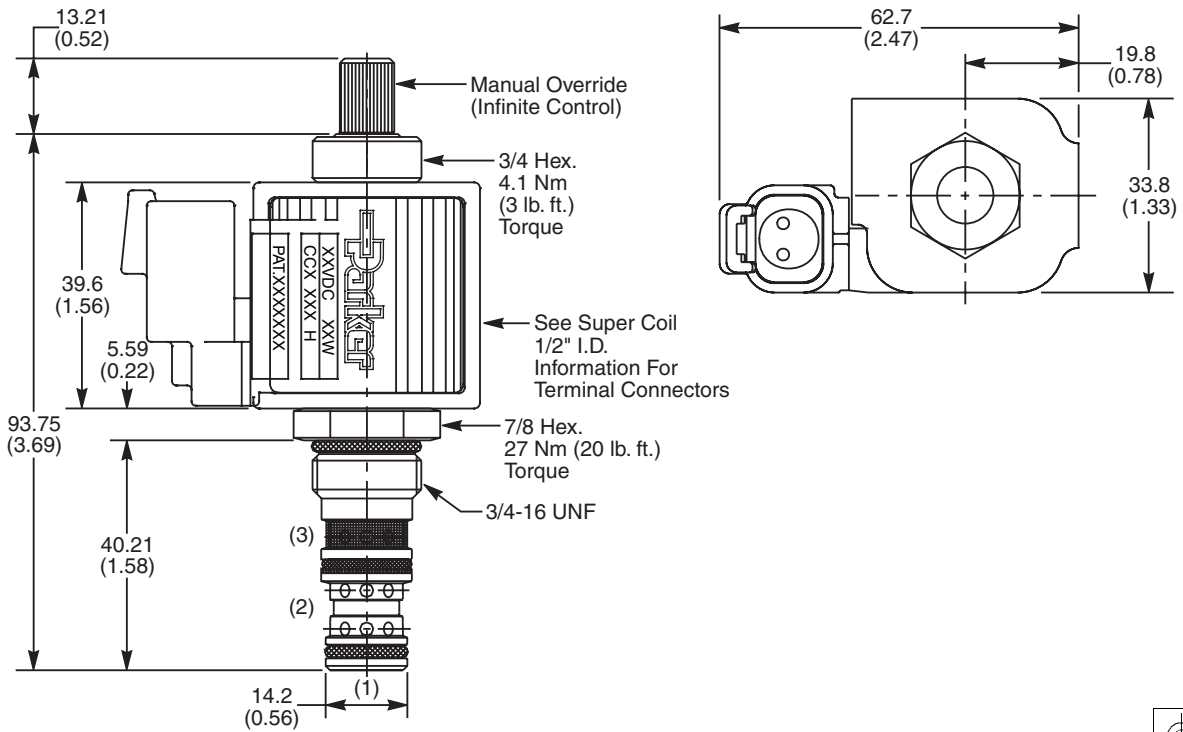
**Pressure Drop vs. Flow**



**Pressure @ Port 2 vs. Input Current**



**Dimensions** Millimeters (Inches)



**Ordering Information**

<b>GTP0234</b>			<b>1</b>	
08 Size Proportional Valve	Style	Override Option	Filter Screen	Seals

**Highlighted** represents preferred options that offer the shortest lead times. Other options may be available, but at extended lead times.

**Coil(s) sold separately.** Please see section CE of this catalog, 1/2" Super-Coil (CC series), for ordering information.

Order Bodies Separately  
 See section BC

<b>B08</b>	-	<b>3</b>	-	
10 size		3-Way Cavity		Port Size

Code	Style (Maximum Regulated Pressure Range - SP COIL)
02	12/17 Bar (180/240 PSI)
03	19/26 Bar (270/375 PSI)
05	31/40 Bar (450/580 PSI)
06	41/51 Bar (600/740 PSI)
09	65/79 Bar (940/1140 PSI)
18	114/145 Bar (1650/2100 PSI)

Code	Override Option
0	Not Required
5	Infinite Control M.O.

Code	Filter Screen
<b>1</b>	<b>60 Mesh Screen on Inlet Port</b>

Code	Porting / Body Material
6T	SAE-8 / Steel (5000 PSI)
A6T	SAE-8 / Aluminium (3000 PSI)

Code	Seals / Kit No.
<b>N</b>	<b>Nitrile / Buna-N (Std.) (SK30105N-1)</b>
V	Fluorocarbon / (SK30105V-1)



- CV
- Check Valves
- SH
- Shuttle Valves
- LM
- Load/Motor Controls
- FC
- Flow Controls
- PC
- Pressure Controls
- LE
- Logic Elements
- DC
- Directional Controls
- MV
- Manual Valves
- SV
- Solenoid Valves
- PV
- Proportional Valves
- CE
- Coils & Electronics
- CB
- Cartrpак Bodies
- BC
- Bodies & Cavities
- TD
- Technical Data