

### General Description

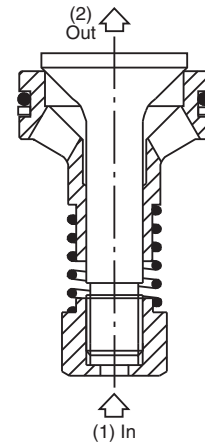
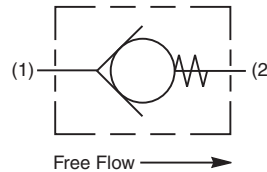
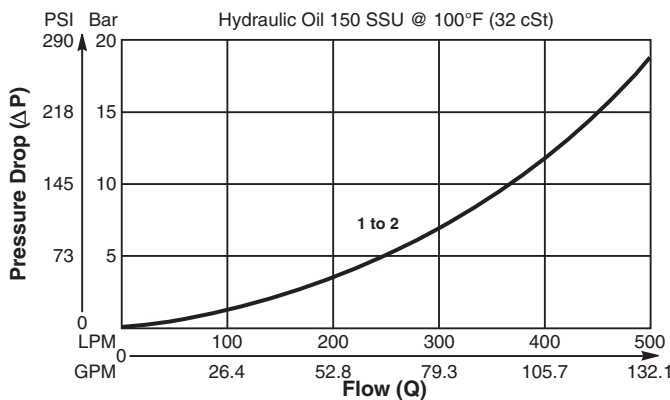
Poppet Type, Check Valve Insert. For additional information see Technical Tips on pages CV1-CV2.

### Features

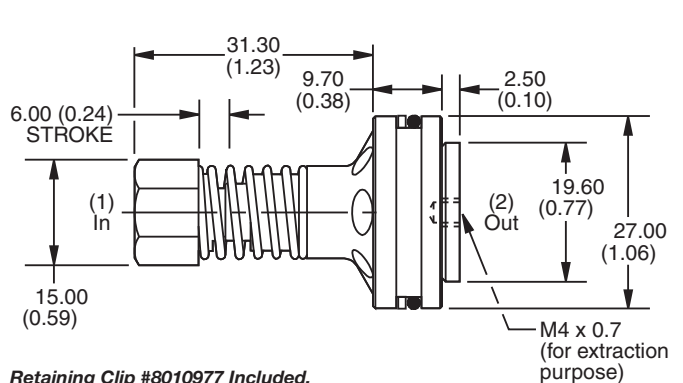
- For inserting inside manifold blocks
- High flow capacity
- Minimal leakage - less than 3 drops/min.
- Simple construction - extremely cost effective
- Range of cracking pressures available
- Good contamination tolerance

### Performance Curve

Pressure Drop vs. Flow (Through cartridge only)



### Dimensions

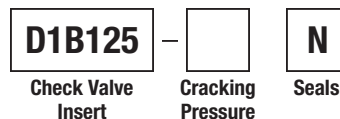


Retaining Clip #8010977 Included.

### Specifications

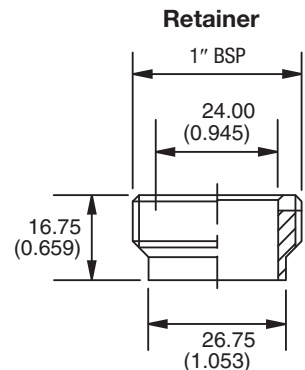
<b>Rated Flow</b>	500 LPM (132 GPM)
<b>Nominal Flow @ 7 Bar (100 PSI)</b>	300 LPM (79 GPM)
<b>Maximum Inlet Pressure</b>	420 Bar (6000 PSI)
<b>Leakage at 150 SSU (32 cSt)</b>	Less than 3 drops/min.
<b>Cartridge Material</b>	Steel operating parts, hardened steel poppet.
<b>Fluid Compatibility/Viscosity</b>	Mineral-based or synthetic with lubricating properties at viscosities of 45 to 2000 SSU (6 to 420 cSt)
<b>Filtration</b>	ISO-4406 18/16/13, SAE Class 4
<b>Approx. Weight</b>	.06 kg (.13 lbs.)
<b>Cavity</b>	2C (See BC Section for more details)

### Ordering Information



Code	Cracking Pressure
0.1	0.1 Bar (1.5 PSI)
0.2	0.2 Bar (3 PSI)
1.0	1.0 Bar (15 PSI) Std.
2.0	2.0 Bar (30 PSI)
3.0	3.0 Bar (45 PSI)
5.0	5.0 Bar (72 PSI)

Code	Seals / Kit No.
N	Nitrile, Buna-N / (SK30014N-1)
	<b>Operating Temp.</b>
	-34°C to +121°C (-30°F to +250°F)



**Note:** Valve is supplied with retention round wire circlip. As an alternative to circlip retention of the check valve insert, the threaded retainer shown here can be used to lock the insert beneath 1" BSP ports and should be ordered separately. For 1" BSP order as RT10001. Torque to 85 Nm (63 lb. ft.)