

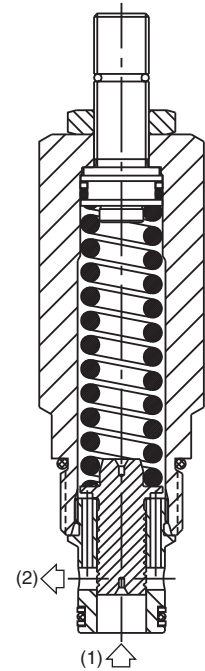
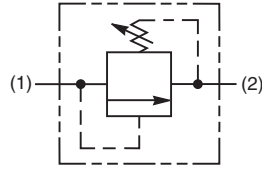
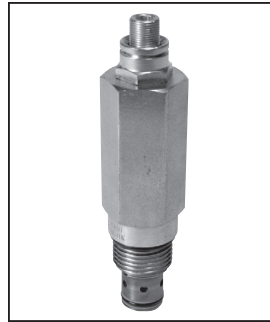
CV Check Valves
SH Shuttle Valves
LM Load/Motor Controls
FC Flow Controls
PC Pressure Controls
LE Logic Elements
DC Directional Controls
SV Solenoid Valves
PV Proportional Valves
CE Coils & Electronics
BC Bodies & Cavities
TD Technical Data

General Description

Direct Acting Spool-Type Relief Valve. For additional information see Technical Tips on pages PC1-PC4.

Features

- High flow capacity
- Fast response with good stability
- Low pressure setting
- Full 420 Bar 6000 PSI tank line back pressure
- Hardened working parts for maximum durability
- Adjustable, preset and tamperproof versions available
- All external parts zinc plated



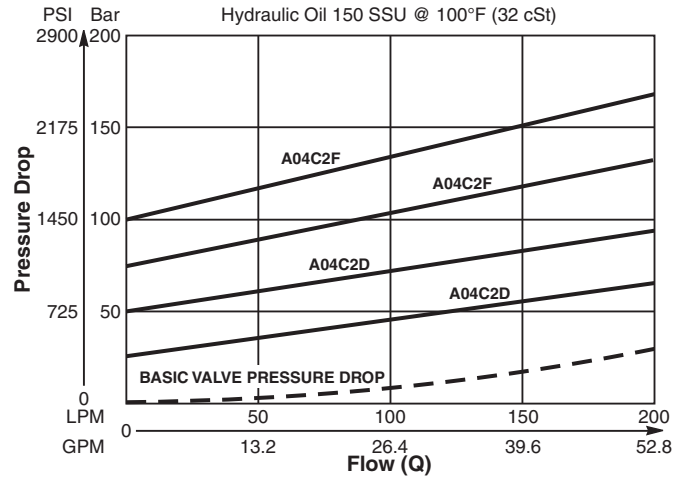
Specifications

Rated Flow	200 LPM (53 GPM)
Maximum Inlet Pressure	D - 2-50 Bar (29-725 PSI) F - 2-100 Bar (29-1450 PSI)
Maximum Pressure Setting	420 Bar (6000 PSI)
Sensitivity: Pressure/Turn	D 5.2 Bar (76 PSI) F 10.1 Bar (147 PSI)
Maximum Tank Pressure	420 Bar (6000 PSI)
Leakage at 150 SSU (32 cSt)	25 ml/min. @ 50 Bar (725 PSI)
Cartridge Material	All parts steel. All operating parts hardened steel.
Fluid Compatibility/ Viscosity	Mineral-based or synthetic with lubricating properties at viscosities of 45 to 2000 SSU (6 to 420 cSt)
Filtration	ISO-4406 18/16/13, SAE Class 4
Approx. Weight	0.28 kg (0.62 lbs.)
Cavity	C10-2 (See BC Section for more details)
Form Tool	Rougher None Finisher NFT10-2F

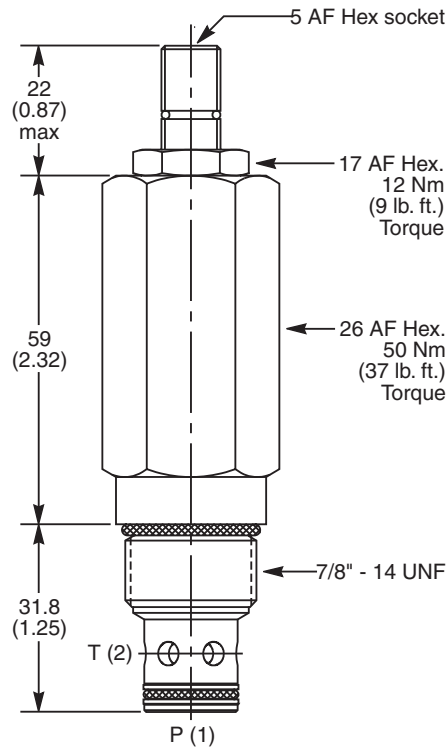
Performance Curve

(Pressure rise through cartridge only)

Flow vs. Inlet Pressure



Dimensions Millimeters (Inches)



Ordering Information

A04C2		Z	N
10 Size Direct Acting Relief Valve	Pressure Adjustment Range	Adjustment Style	Seals

Code	Pressure Adjustment Range
D	2 - 50 Bar (29 - 725 PSI)
F	2 - 100 Bar (29 - 1450 PSI)

Code	Adjustment Style
Z	Screw Adjust

Code	Seals / Kit No.	Operating Temp.
N	Nitrile, Buna-N / (SK30503N-1)	-34°C to +121°C (-30°F to +250°F)

Standard Pressure Setting
A04C2D Standard Setting: 25 Bar (360 PSI) @ 15 LPM (4.0 GPM)
A04C2F Standard Setting: 50 Bar (725 PSI) @ 15 LPM (4.0 GPM)

Valves are supplied at Standard setting. Other settings are available, please contact Parker Sales.

Order Bodies Separately See section BC

B10 10 Size	—	2 2-Way Cavity	—	8B Port Size
Port Size 1/2" BSP		Body Material Steel		

- CV** Check Valves
- SH** Shuttle Valves
- LM** Load/Motor Controls
- FC** Flow Controls
- PC** Pressure Controls
- LE** Logic Elements
- DC** Directional Controls
- SV** Solenoid Valves
- PV** Proportional Valves
- CE** Coils & Electronics
- BC** Bodies & Cavities
- TD** Technical Data