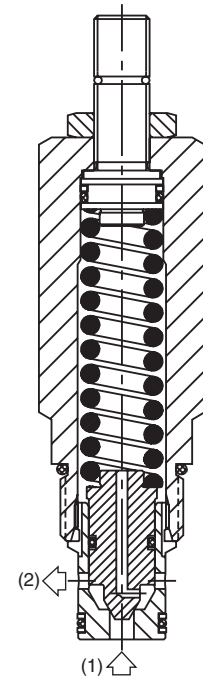
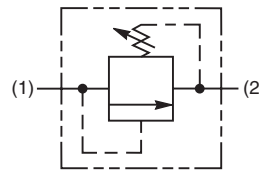


General Description

Direct Acting Poppet-Type Relief Valve.
 For additional information see Technical Tips on pages PC3-PC7.

Features

- Fast response with good stability
- Virtually leak free
- Hardened working parts for maximum durability
- All external parts zinc plated



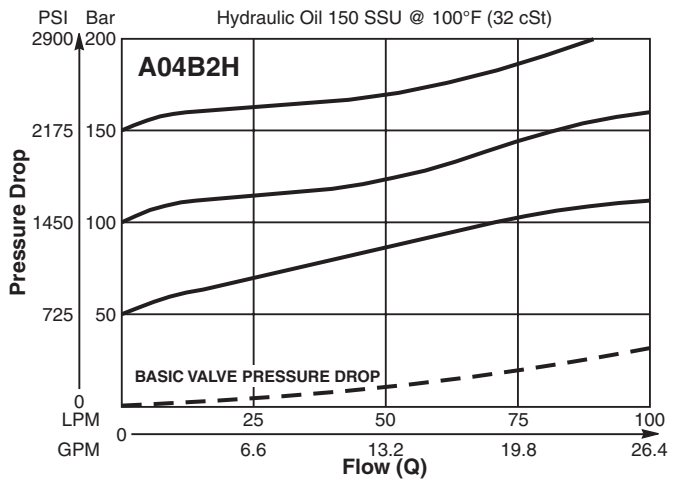
Specifications

Rated Flow	100 LPM (26 GPM)
Maximum Inlet Pressure	H- 5-210 Bar (72-3000 PSI) P- 5-420 Bar (72-6000 PSI)
Maximum Pressure Setting	420 Bar (6000 PSI)
Sensitivity: Pressure/Turn	H- 21 Bar (305 PSI) P- 43.4 Bar (630 PSI)
Maximum Tank Pressure	420 Bar (6000 PSI)
Leakage at 150 SSU (32 cSt)	5 drops/min. @100 Bar (1450 PSI)
Cartridge Material	All parts steel. All operating parts hardened steel.
Operating Temp. Range/Seals	-34°C to +121°C (Nitrile) (-30°F to +250°F) -26°C to +204°C (Fluorocarbon) (-15°F to +400°F)
Fluid Compatibility/Viscosity	Mineral-based or synthetic with lubricating properties at viscosities of 45 to 2000 SSU (6 to 420 cSt)
Filtration	ISO-4406 18/16/13, SAE Class 4
Approx. Weight	0.28 kg (0.62 lbs.)
Cavity	C10-2 (See BC Section for more details)

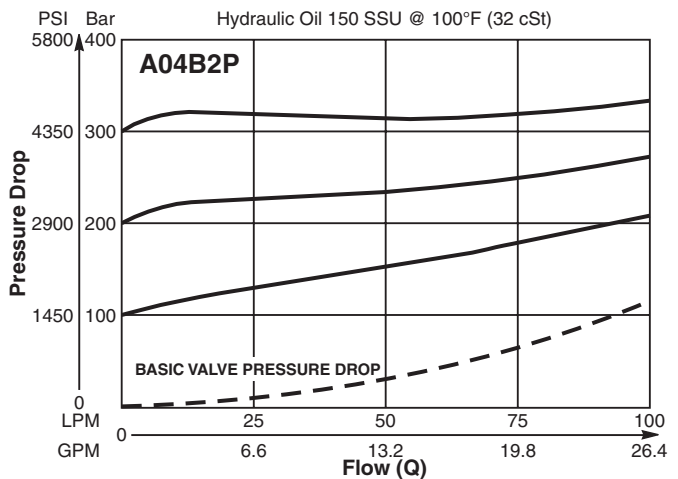
Performance Curves

(Pressure rise through cartridge only)

Flow vs. Inlet Pressure

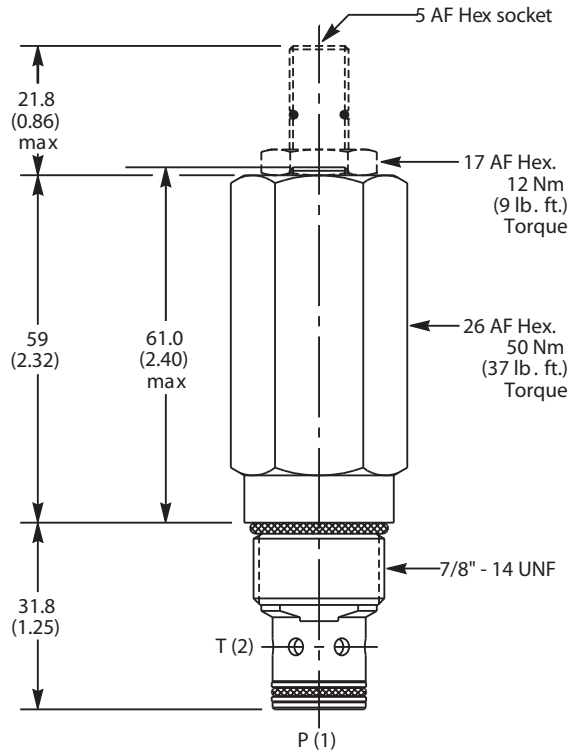


Flow vs. Inlet Pressure



CV
Check Valves
SH
Shuttle Valves
LM
Load/Motor Controls
FC
Flow Controls
PC
Pressure Controls
LE
Logic Elements
DC
Directional Controls
SV
Solenoid Valves
PV
Proportional Valves
CE
Coils & Electronics
BC
Bodies & Cavities
TD
Technical Data

Dimensions Millimeters (Inches)



Ordering Information

A04B2		Z	N
10 Size Direct Acting Relief Valve	Pressure Adjustment Range	Adjustment Style	Seals

Highlighted represents preferred options that offer the shortest lead times. Other options may be available, but at extended lead times.

Code	Pressure Range
H	5 - 210 Bar (72 - 3000 PSI)
P	5 - 420 Bar (72 - 6000 PSI)

Code	Adjustment Style
Z	Screw Adjust

Code	Seals
N	Nitrile

Standard Pressure Setting
A04B2H Standard Setting: 100 Bar (1450 PSI) @ 15 LPM (4.0 GPM)
A04B2P Standard Setting: 200 Bar (2900 PSI) @ 15 LPM (4.0 GPM)

Order Bodies Separately
 See section BC

B10	-	2	-	8T
10 size		2-Way Cavity		Port Size

Code	Porting / Body Material
8T	SAE-8 / Steel (5000 PSI)

Kit	Part Number
Knob	ASV014975
Tamper Resistant Cap	TC1130
Nitrile Seal	SK30503N-1
Fluorocarbon Seal	SK30503V-1

CV
Check Valves
SH
Shuttle Valves
LM
Load/Motor Controls
FC
Flow Controls
PC
Pressure Controls
LE
Logic Elements
DC
Directional Controls
SV
Solenoid Valves
PV
Proportional Valves
CE
Coils & Electronics
BC
Bodies & Cavities
TD
Technical Data