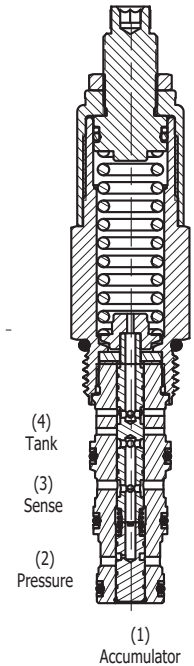
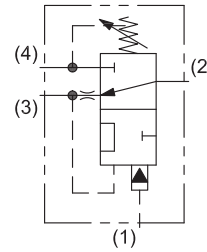
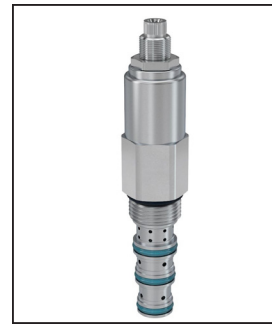


General Description

Pressure Unloading Valve Assembly
 This valve is best suited for accumulator unloading circuits or can be used as a remote to pilot valves. They provide a fixed percentage between load and unload pressures. For additional information see Technical Tips on pages PC3-PC7.

Features

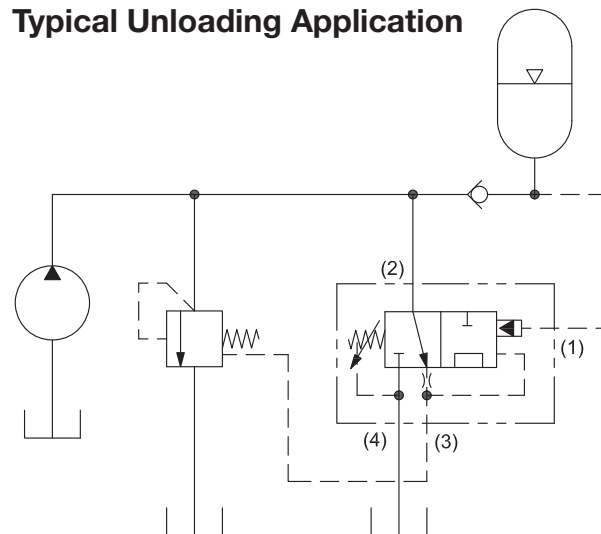
- Low hysteresis
- Cartridge design
- Hardened, precision ground parts for durability
- All external parts zinc plated
- “D”-Ring eliminates backup rings



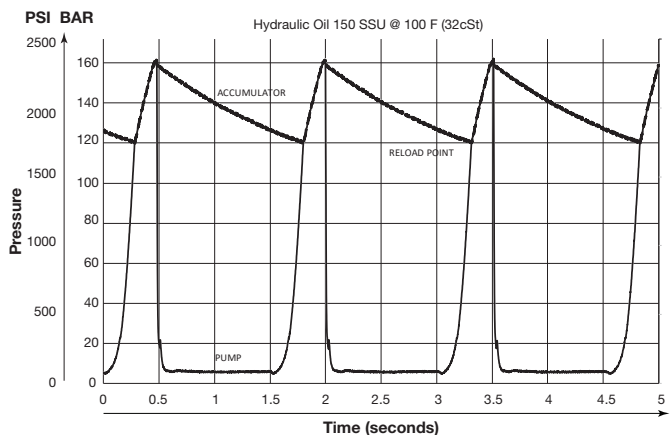
Specifications

Rated Flow	1 LPM (.25 GPM)
Maximum Inlet Pressure	250 Bar (3600 PSI)
Maximum Pressure Setting	250 Bar (3600 PSI)
Pressure Sensitivity	12 = 112 PSI/Turn 24 = 214 PSI/Turn 36 = 367 PSI/Turn
Maximum Tank Pressure	210 Bar (3000 PSI)
Leakage at 150 SSU (32 cSt)	Port 1 leakage 48 ml/min. @207 Bar (3000 PSI)
Cartridge Material	All parts steel. All operating parts hardened steel.
Operating Temp. Range/Seals	-37°C to +93°C (“D”-Ring) (-35°F to +200°F) -34°C to +121°C (Nitrile) (-30°F to +250°F) -26°C to +204°C (Fluorocarbon) (-15°F to +400°F)
Fluid Compatibility/Viscosity	Mineral-based or synthetic with lubricating properties at viscosities of 45 to 2000 SSU (6 to 420 cSt)
Filtration	ISO-4406 18/16/13, SAE Class 4
Approx. Weight	0.45 kg (1.0 lbs.)
Cavity	C10-4 (See BC Section for more details)

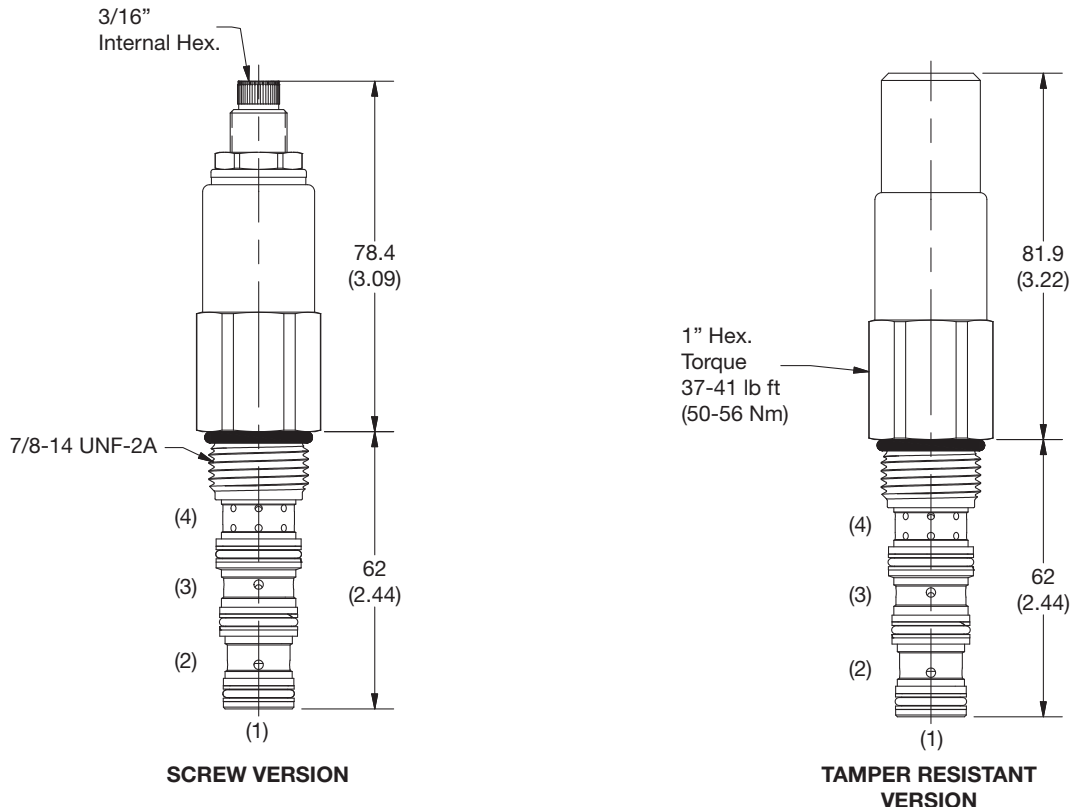
Typical Unloading Application



**Performance Curve
 Pump and Accumulator Pressure vs. Time**



- CV**
Check Valves
- SH**
Shuttle Valves
- LM**
Load/Motor Controls
- FC**
Flow Controls
- PC**
Pressure Controls
- LE**
Logic Elements
- DC**
Directional Controls
- SV**
Solenoid Valves
- PV**
Proportional Valves
- CE**
Coils & Electronics
- BC**
Bodies & Cavities
- TD**
Technical Data



Ordering Information

RU104	S		B
10 Size Pressure Unloading Valve	Adjustment Style	Pressure Range	Reload

Highlighted represents preferred options that offer the shortest lead times. Other options may be available, but at extended lead times.

Code	Adjustment Style
S	Screw Adjust

Code	Reload
B	80% ±5% of Pressure Setting

Code	Pressure Range
12	55.2 - 82.7 Bar (800 - 1200 PSI) Standard Setting: 68.9 Bar (1000 PSI) @ 1.1 LPM (.3 GPM)
24	68.9 - 165.5 Bar (1000 - 2400 PSI) Standard Setting: 117.2 Bar (1700 PSI) @ 1.1 LPM (.3 GPM)
36	120.7 - 248.2 Bar (1750 - 3600 PSI) Standard Setting: 184.4 Bar (2675 PSI) @ 1.1 LPM (.3 GPM)

Code	Seals
Omit	D-Ring

Kit	Part Number
Tamper Resistant Cap	717943
D-Ring Seal	SK08-2
Nitrile Seal	SK08-2
Fluorocarbon Seal	SK08-2V

Order Bodies Separately
 See section BC

B10	-	4	-	8T
10 size		4-Way Cavity		Port Size

Code	Porting / Body Material
8T	SAE-8 / Steel (5000 PSI)

CV
Check Valves
SH
Shuttle Valves
LM
Load/Motor Controls
FC
Flow Controls
PC
Pressure Controls
LE
Logic Elements
DC
Directional Controls
SV
Solenoid Valves
PV
Proportional Valves
CE
Coils & Electronics
BC
Bodies & Cavities
TD
Technical Data