

General Description

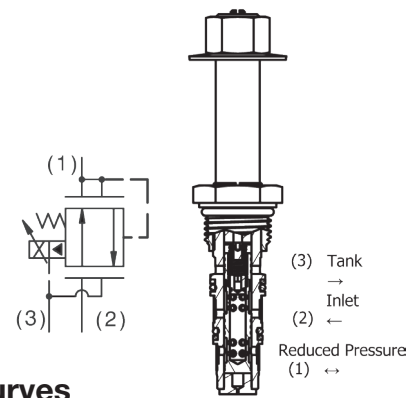
Pilot Operated, Pressure Increasing with Current Proportional Pressure Reducing/ Relieving Valve. For additional information see Technical Tips on pages PV2-PV5.

Features

- Low hysteresis
- High flow capacity
- 400 Hz PWM signal preferred
- No dynamic seals
- Screw style manual override standard
- Polyurethane “D”-ring eliminates the need for back-up rings

Specifications

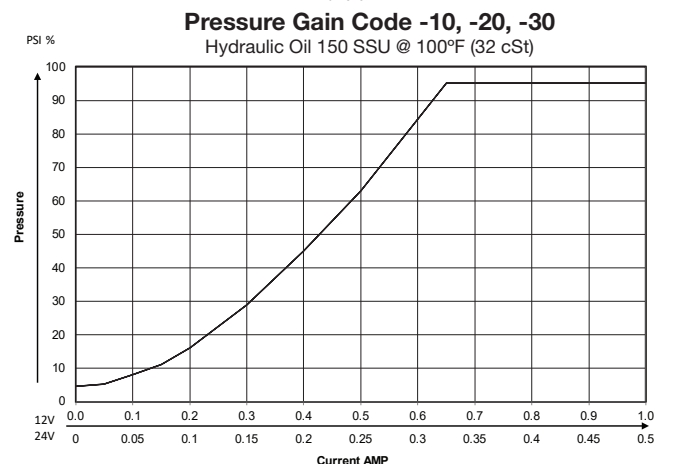
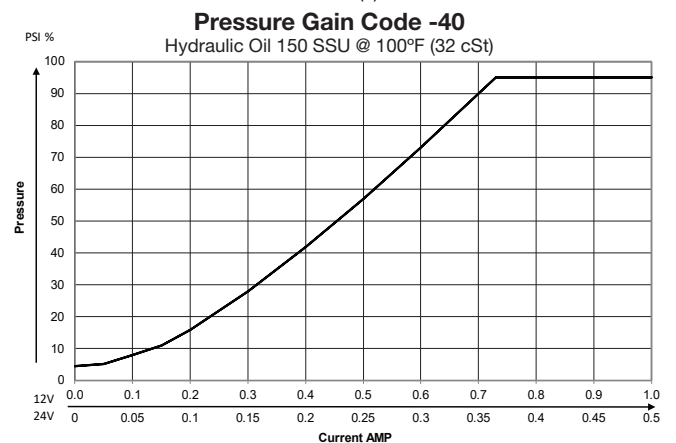
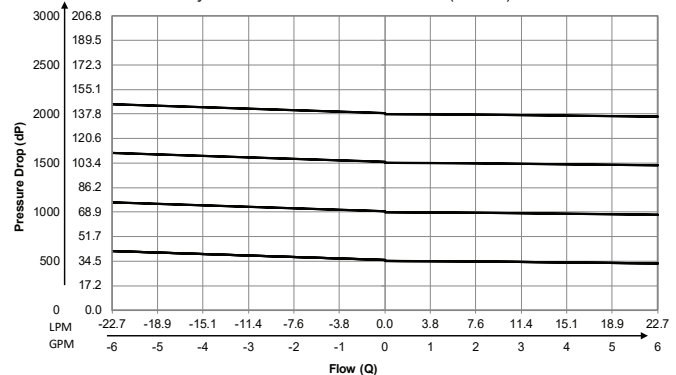
Rated Flow	22.7 LPM (6 GPM)
Max. Input Press. At Port 1	345 Bar (5000 PSI)
Max. Internal Leakage De-energised	230 cc/min (14 in ³ /min)
Hysteresis @ 400 Hz PWM	4% with 30% to 50% duty cycle
Power Consumption	8.4 Watts at max. reduced pressure
Frequency	200-600 Hz (PWM)
Continuous Duty Control Current	12VDC .730A 24VDC .365A
Cartridge Material	All parts steel. All operating parts hardened steel.
Operating Temp. Range/Seals	-37°C to +93°C (“D”-Ring) (-35°F to +200°F) -34°C to +121°C (Nitrile Buna-N) (-30°F to +250°F) -26°C to +204°C (Fluorocarbon) (-15°F to +400°F)
Fluid Compatibility/ Viscosity	Mineral-based or synthetic with lubricating properties at viscosities of 45 to 2000 SSU (6 to 420 cSt)
Filtration	ISO-4406 18/16/13, SAE Class 4
Approx. Weight	0.25 kg (0.55 lbs.) With coil
Cavity	C08-3L (See BC Section for more details)



Performance Curves

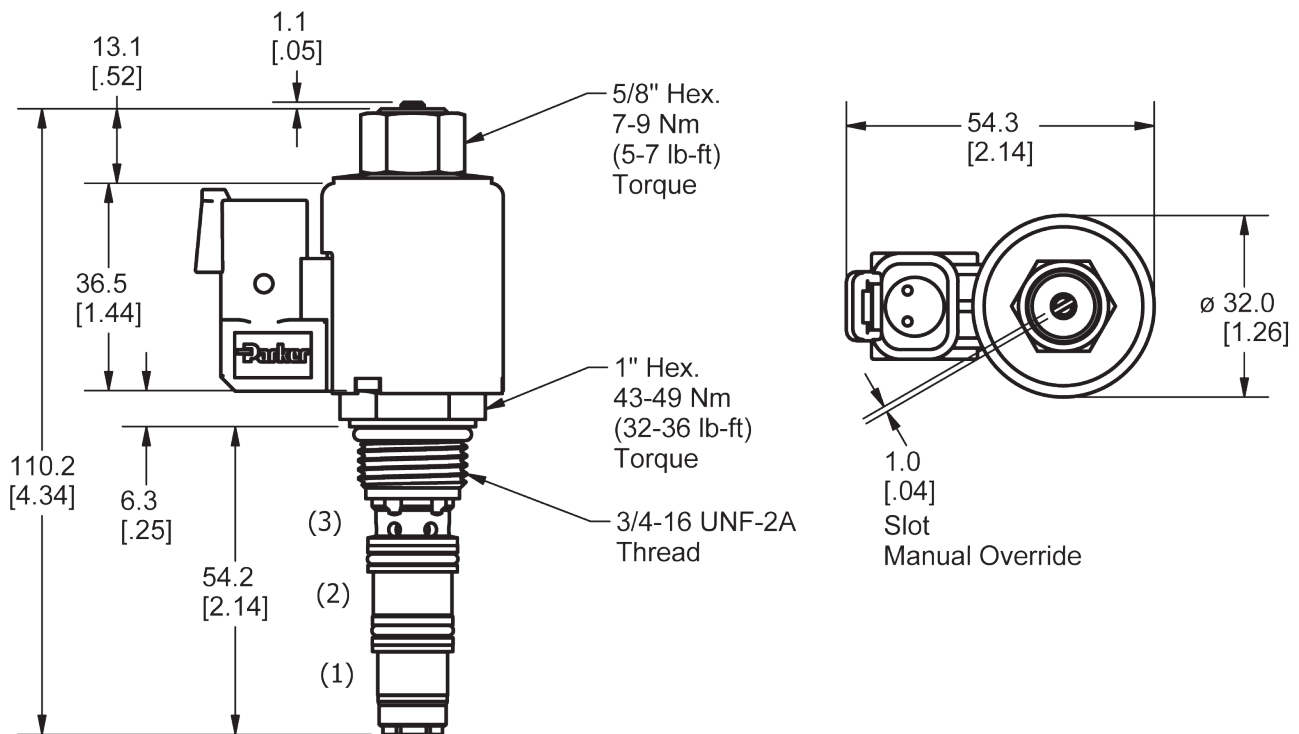
Current Regulator PWM Recommended

Regulated Pressure vs. Flow (Through Cartridge Only)
 Hydraulic Oil 150 SSU @ 100°F (32 cSt)



- CV**
Check Valves
- SH**
Shuttle Valves
- LM**
Load/Motor Controls
- FC**
Flow Controls
- PC**
Pressure Controls
- LE**
Logic Elements
- DC**
Directional Controls
- SV**
Solenoid Valves
- PV**
Proportional Valves
- CE**
Coils & Electronics
- BC**
Bodies & Cavities
- TD**
Technical Data

Dimensions Millimeters (Inches)



Ordering Information

EPR083	R	
08 Size Proportional Valve	Style	Pressure Range

Highlighted represents preferred options that offer the shortest lead times. Other options may be available, but at extended lead times.

Coil(s) sold separately. Please see section CE of this catalog, 1/2" Coil Short Proportional (SW7L series), for ordering information.

Code	Coil Type
R	Pilot operated increasing "rising" pressure

Code	Seals
Omit	"D"-Ring

Code	Pressure Range (Output)
20	138 Bar (2000 PSI)
40	276 Bar (4000 PSI)

Order Bodies Separately
 See section BC

B08	3L	8T
08 size	3-Way Cavity	Port Size

Code	Porting / Body Material
8T	SAE-8 / Steel (5000 PSI)

Kit	Part Number
D-Ring Seal	SK08-3
Nitrile Seal	SK08-3
Fluorocarbon Seal	SK08-3V



CV
Check Valves
SH
Shuttle Valves
LM
Load/Motor Controls
FC
Flow Controls
PC
Pressure Controls
LE
Logic Elements
DC
Directional Controls
SV
Solenoid Valves
PV
Proportional Valves
CE
Coils & Electronics
BC
Bodies & Cavities
TD
Technical Data