

General Description

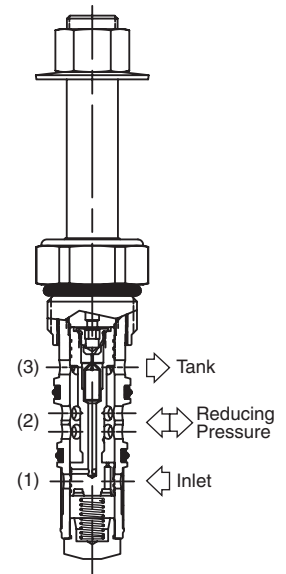
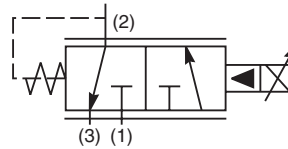
Pilot Operated, Normally Closed, Proportional Pressure Reducing/Relieving Valve. For additional information see Technical Tips on pages PV2-PV5.

Features

- High flow capacity
- Low hysteresis
- 400 Hz PWM signal preferred
- No dynamic seals
- Polyurethane “D”-Ring eliminates need for backup rings

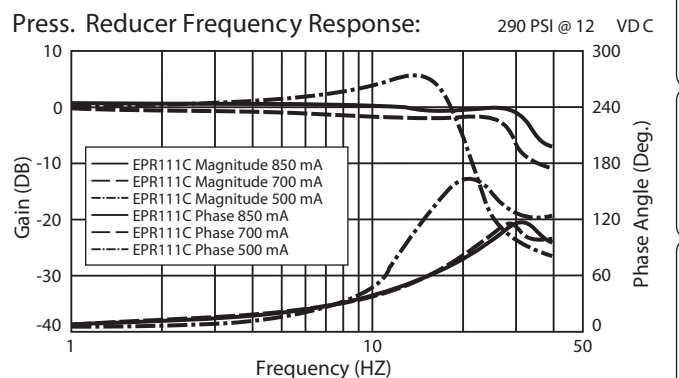
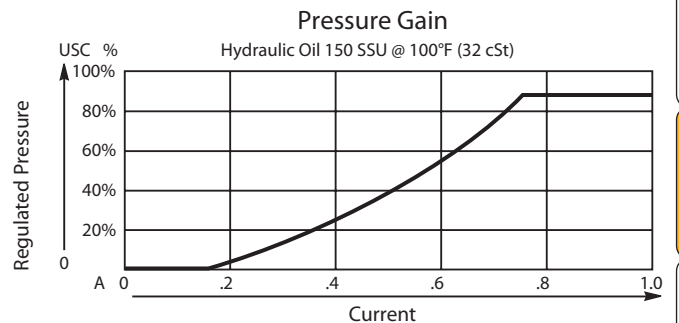
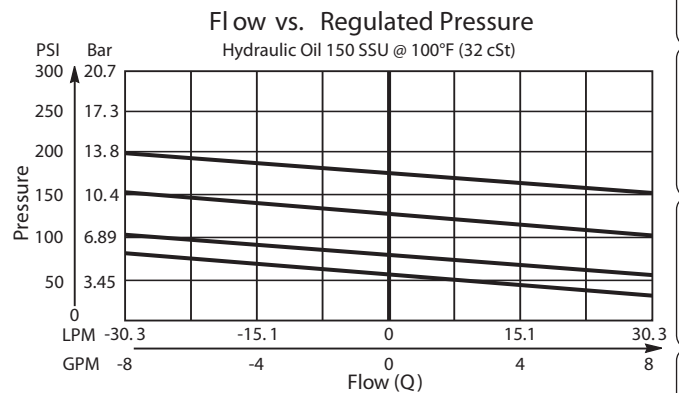
Specifications

Rated Flow	37.5 LPM (10 GPM)
Maximum Input Pressure at Port 2	350 Bar (5000 PSI)
Maximum Internal Leakage	0.5 LPM (0.13 GPM) @ 20.7 Bar (300 PSI) 0.95 LPM (0.25 GPM) @ 207 Bar (3000 PSI)
Hysteresis @ 400 Hz PWM	4% with 60% duty cycle
Power Consumption	9 watts at max. reduced pressure
Frequency	200-600 Hz (PWM)
Maximum Control Current	12 VDC .90A 24 VDC .45A
Cartridge Material	All parts steel. All operating parts hardened steel.
Operating Temp. Range/Seals	-37°C to +93°C (“D”-Ring) (-35°F to +200°F) -34°C to +121°C (Nitrile) (-30°F to +250°F) -26°C to +204°C (Fluorocarbon) (-15°F to +400°F)
Fluid Compatibility/Viscosity	Mineral-based or synthetic with lubricating properties at viscosities of 45 to 2000 SSU (6 to 420 cSt)
Filtration	ISO-4406 18/16/13, SAE Class 4
Approx. Weight	0.59 kg (1.3 lbs.)
Cavity	C10-3L (See BC Section for more details)



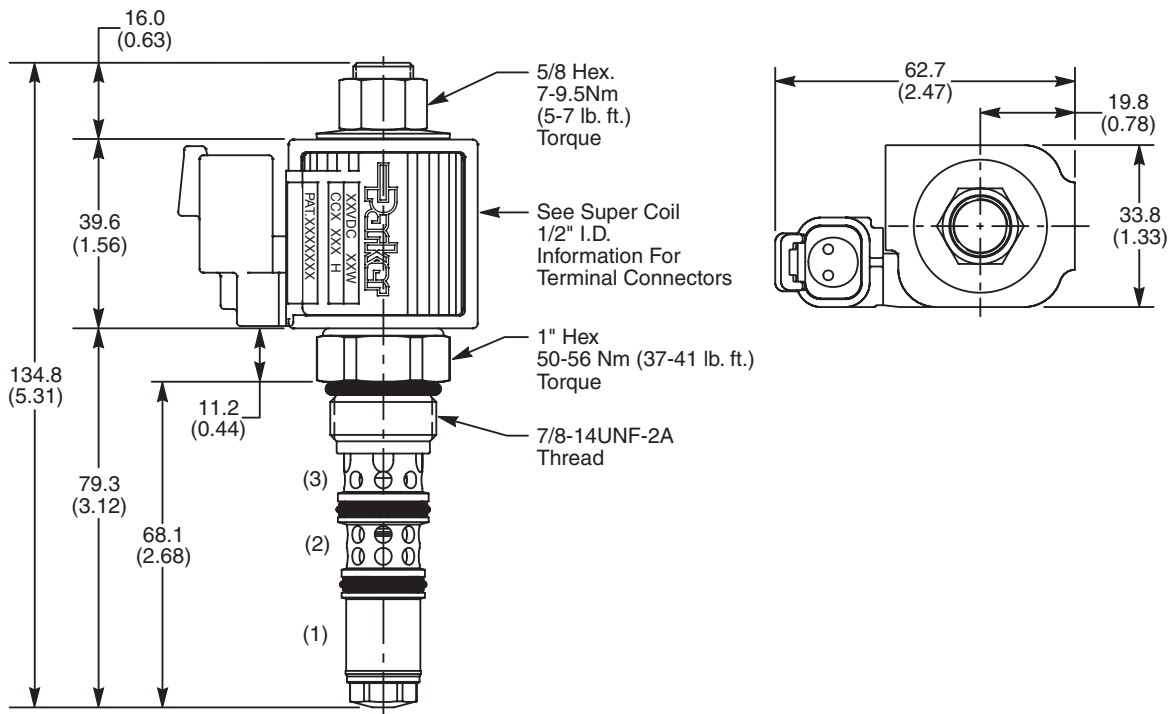
Performance Curves

▲ PWM Current Regulator Recommended



- CV Check Valves
- SH Shuttle Valves
- LM Load/Motor Controls
- FC Flow Controls
- PC Pressure Controls
- LE Logic Elements
- DC Directional Controls
- SV Solenoid Valves
- PV Proportional Valves**
- CE Coils & Electronics
- BC Bodies & Cavities
- TD Technical Data

Dimensions Millimeters (Inches)



Ordering Information

EPR111	C	□
11 Size Proportional Red./Rel. Valve	Style	Pressure Range

Highlighted represents preferred options that offer the shortest lead times. Other options may be available, but at extended lead times.

Coil(s) sold separately. Please see section CE of this catalog, 1/2" Super-Coil (CC series), for ordering information.

Code	Style
C	Normally Closed, Pilot Operated

Code	Seals
Omit	"D"-Ring

Code	Pressure Range
10	68.9 Bar (1000 PSI)
20	138 Bar (2000 PSI)
30	207 Bar (3000 PSI)

*Order Bodies Separately
See section BC*

B10	-	3	-	8T
10 size		3-Way Cavity		Port Size

Code	Porting / Body Material
8T	SAE-8 / Steel (5000 PSI)

Kit	Part Number
D-Ring Seal	SK10-3L
Nitrile Seal	SK10-3LN
Fluorocarbon Seal	SK10-3LV



CV
Check Valves
SH
Shuttle Valves
LM
Load/Motor Controls
FC
Flow Controls
PC
Pressure Controls
LE
Logic Elements
DC
Directional Controls
SV
Solenoid Valves
PV
Proportional Valves
CE
Coils & Electronics
BC
Bodies & Cavities
TD
Technical Data