

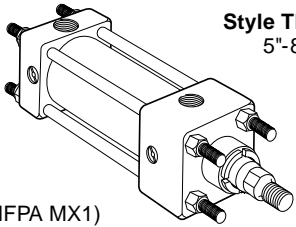
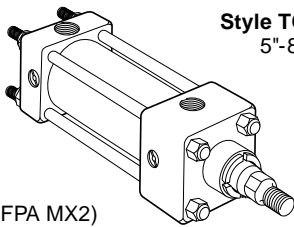
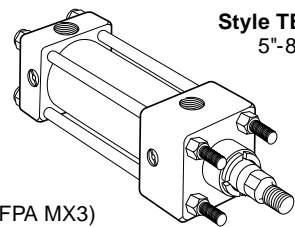
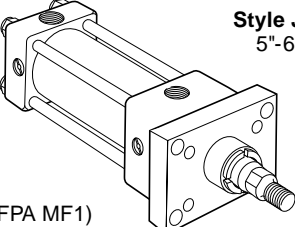
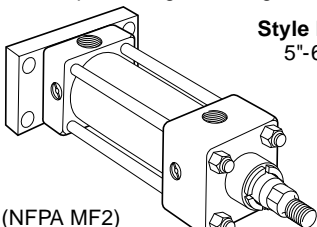
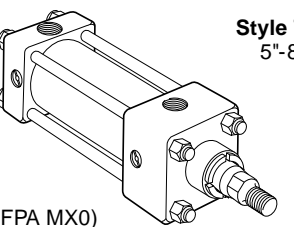
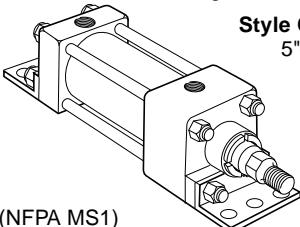
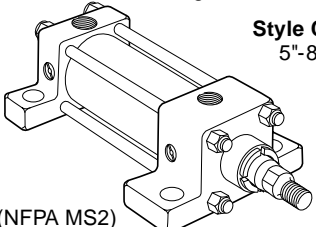
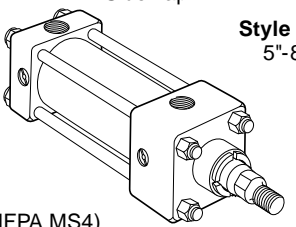
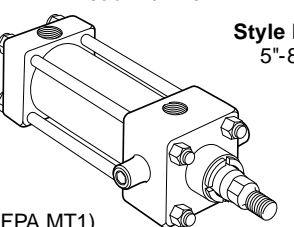
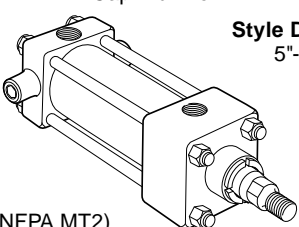
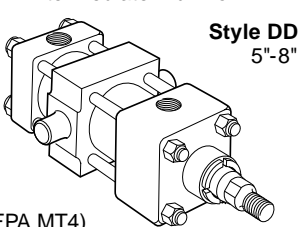
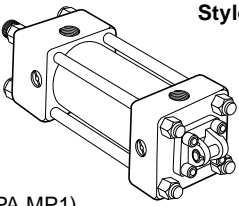
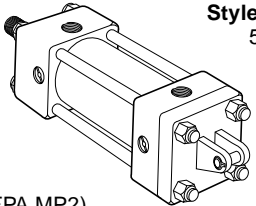
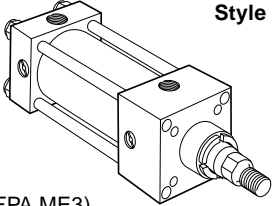
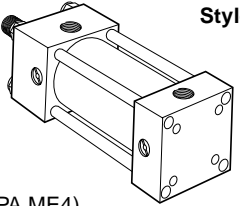
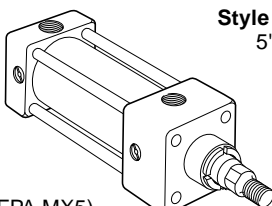
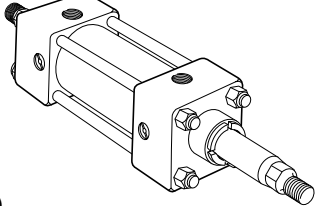
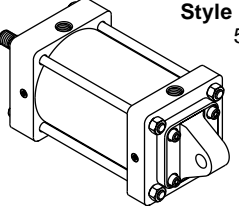
## Standard Specifications Mounting Styles

# Series 2MA Air Cylinders

### Standard Specifications

- N.F.P.A. Interchangeable
- Bore sizes – 5", 6" and 8"
- Rod Diameters – 1", 1-3/8", and 1-3/4"
- Rod Ends – three standard, specials to order.
- Cushions – optional at either end or both ends of stroke
- Strokes – available in any practical stroke length.
- 250 P.S.I. Air Service
- 250 P.S.I. Hydraulic Service (non-cushioned only)
- Standard Fluid – Filtered Air
- Standard Temperature – -10°F to +165°F
- Viton Seals for high temperature service – -10°F to +250°F (optional)
- Single end or double end
- Mounting styles – 17 standard
- Optional urethane noise damping bumpers  
NOTE: Use of bumpers results in loss of effective stroke of 1/4" per bumper (see [How to Order](#)).

### Available Mounting Styles

<p>Tie Rods Extended Both Ends</p>  <p><b>Style TD</b> 5"-8"</p> <p>(NFPA MX1)</p>	<p>Tie Rods Extended Cap End</p>  <p><b>Style TC</b> 5"-8"</p> <p>(NFPA MX2)</p>	<p>Tie Rods Extended Head End</p>  <p><b>Style TB</b> 5"-8"</p> <p>(NFPA MX3)</p>	<p>Head Rectangular Flange</p>  <p><b>Style J</b> 5"-6"</p> <p>(NFPA MF1)</p>
<p>Cap Rectangular Flange</p>  <p><b>Style H</b> 5"-6"</p> <p>(NFPA MF2)</p>	<p>No Mount</p>  <p><b>Style T</b> 5"-8"</p> <p>(NFPA MX0)</p>	<p>Side End Angle</p>  <p><b>Style CB</b> 5"-8"</p> <p>(NFPA MS1)</p>	<p>Side Lug</p>  <p><b>Style C</b> 5"-8"</p> <p>(NFPA MS2)</p>
<p>Side Tap</p>  <p><b>Style F</b> 5"-8"</p> <p>(NFPA MS4)</p>	<p>Head Trunnion</p>  <p><b>Style D</b> 5"-8"</p> <p>(NFPA MT1)</p>	<p>Cap Trunnion</p>  <p><b>Style DB</b> 5"-8"</p> <p>(NFPA MT2)</p>	<p>Intermediate Trunnion</p>  <p><b>Style DD</b> 5"-8"</p> <p>(NFPA MT4)</p>
<p>Cap Fixed Clevis</p>  <p><b>Style BB</b> 5"-8"</p> <p>(NFPA MP1)</p>	<p>Cap Detachable Clevis</p>  <p><b>Style BC</b> 5"-8"</p> <p>(NFPA MP2)</p>	<p>Head Square</p>  <p><b>Style JB</b> 8"</p> <p>(NFPA ME3)</p>	<p>Cap Square</p>  <p><b>Style HB</b> 8"</p> <p>(NFPA ME4)</p>
<p>Sleeve Nut</p>  <p><b>Style TE</b> 5"-8"</p> <p>(NFPA MX5)</p>	<p>Double Rod End</p>  <p><b>Style KT Shown</b> 5"-8"</p> <p>(NFPA MDX0)</p>	<p>Cap Detachable Eye</p>  <p><b>Style BE0</b> 5"-6"</p> <p>(NFPA MP4)</p>	

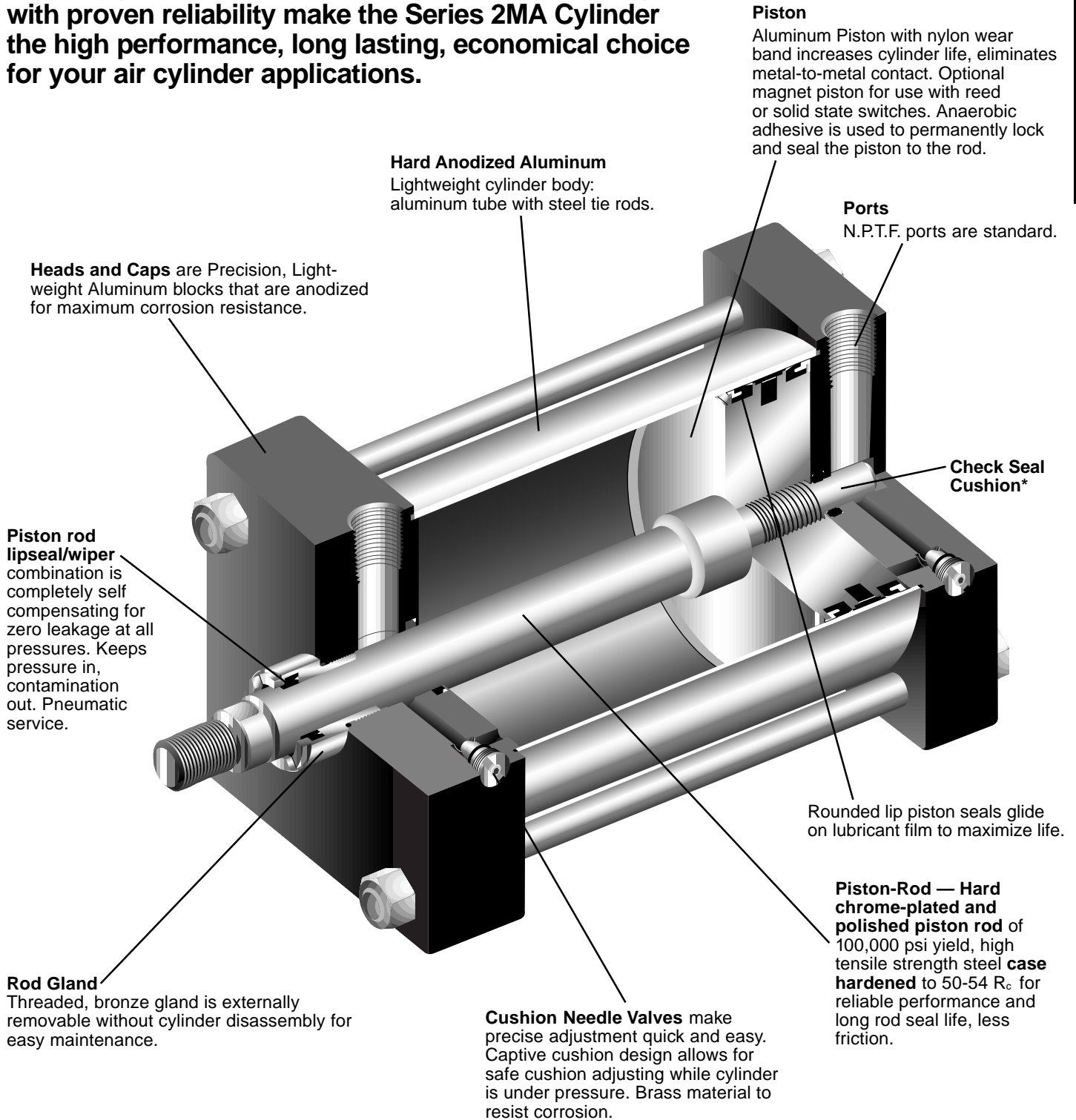
For additional information – call your local  
Parker Cylinder Distributor.



# Series 2MA - 5" through 8" Bore, Lightweight, Non-Lube Pneumatic Cylinder.

Premium Quality and Economy in one.

Lightweight construction and solid Non-Lube design with proven reliability make the Series 2MA Cylinder the high performance, long lasting, economical choice for your air cylinder applications.



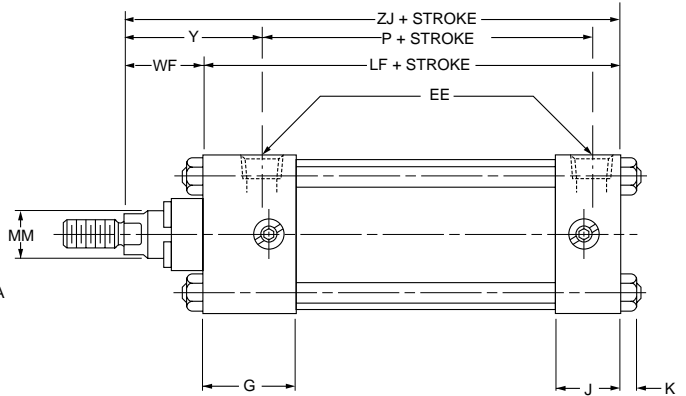
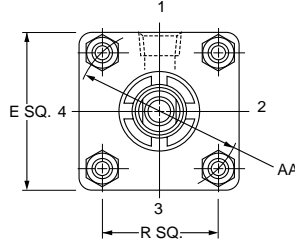
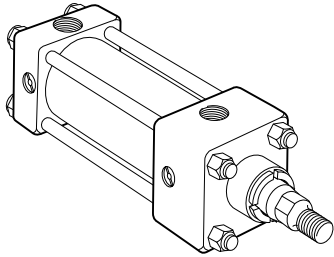
For Cylinder Division Plant Locations – See Section H.



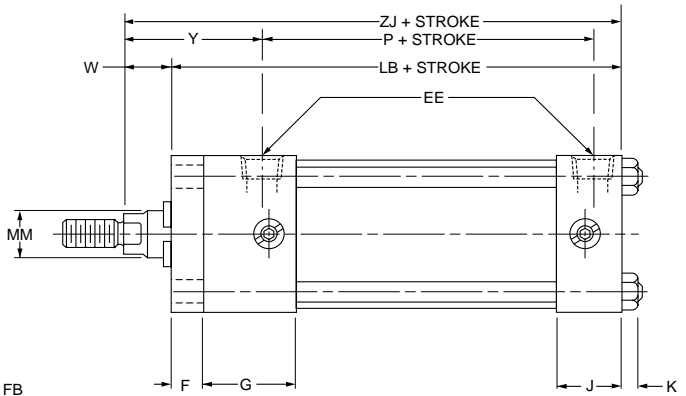
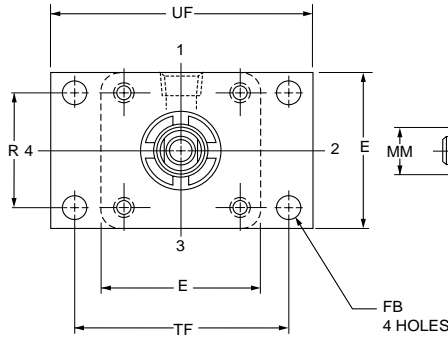
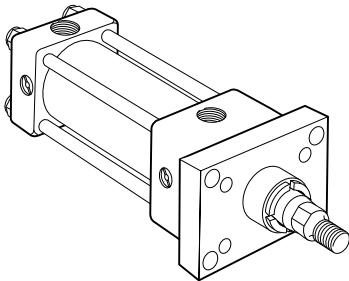
**No Mount (Basic)  
Head Rectangular Flange Mount  
Cap Rectangular Flange Mount**

**Series 2MA  
Air Cylinders**

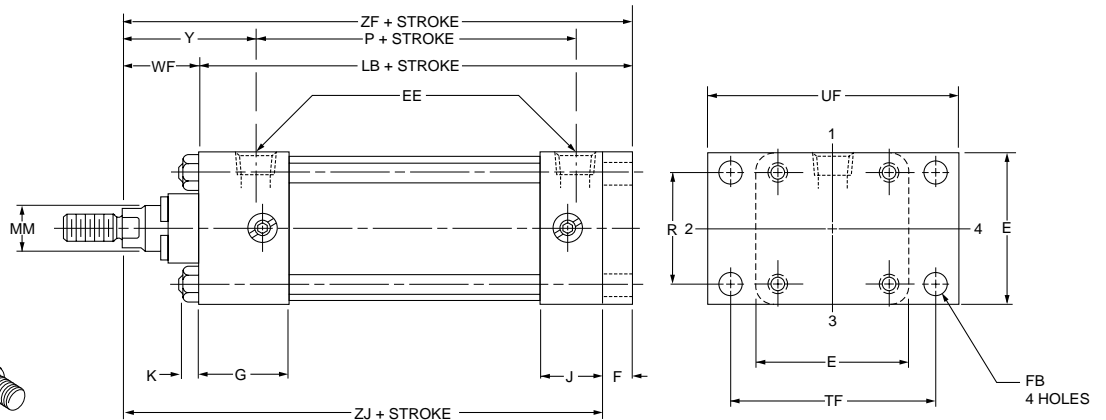
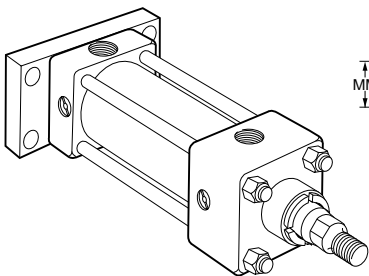
**No Mount (5" to 8" Bore Sizes)  
Style T  
(NFPA MX0)**



**Head Rectangular Flange Mount (5" and 6" Bore Sizes)  
Style J  
(NFPA MF1)**



**Cap Rectangular Flange Mount (5" and 6" Bore Sizes)  
Style H  
(NFPA MF2)**



For additional information – call your local  
Parker Cylinder Distributor.



# Series 2MA Air Cylinders

No Mount (Basic)  
Head Rectangular Flange Mount  
Cap Rectangular Flange Mount  
5" to 8" Bore Sizes

## Rod End Dimensions—Basic Cylinder

Thread Style 4  
(NFA Style SM)  
Small Male

Thread Style 8  
(NFA Style IM)  
Intermediate Male

Thread Style 9  
(NFA Style SF)  
Short Female

**"Special Thread" Style 3**

Special thread, extension, rod eye, blank, etc., are also available. To order specify "Style 3" and give desired dimensions for CC or KK, A and W or WF. If otherwise special, furnish dimensioned sketch.

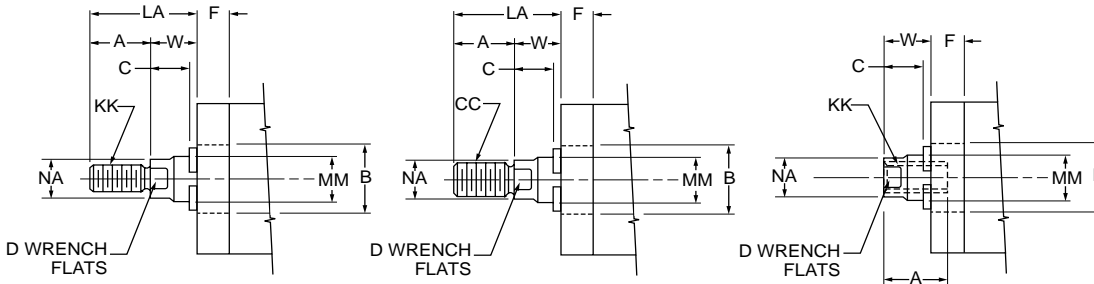


Table 1—Envelope and Mounting Dimensions

Bore	AA	E	EE (NPTF)	F	FB	G	J	K	R	TF	UF	ADD STROKE		
												LB	LF	P
5	5.8	5 1/2	1/2	5/8	9/16	1.66	1.22	7/16	4.10	6 5/8	7 5/8	5 1/8	4 1/2	2 7/8
6	6.9	6 1/2	3/4	3/4	9/16	1.91	1.41	7/16	4.88	7 5/8	8 5/8	5 3/4	5	3 1/8
8	9.1	8 1/2	3/4	3/4	—	1.81	1.44	9/16	—	—	—	5 7/8	5 1/8	3 1/4

Table 2—Rod Dimensions

Bore Size	Rod No.	Rod		Thread		A	+.000 -.002 B	C	D	LA	NA	VF	W	WF	Y	ADD STROKE	
		Dia MM	Style 8 CC	Style 4 & 9 KK	ZF											ZJ	
5	1	1	7/8-14	3/4-16	11/8	1.499	5/8	7/8	17/8	15/16	3/4	3/4	13/8	27/16	6 1/2	5 7/8	
	3	1 3/8	1 1/4-12	1-14	15/8	1.999	7/8	1 1/8	2 5/8	15/16	3/4	1	15/8	2 11/16	6 3/4	6 1/8	
6	1	1 3/8	1 1/4-12	1-14	15/8	1.999	7/8	1 1/8	2 1/2	15/16	3/4	7/8	15/8	2 13/16	7 3/8	6 5/8	
	3	1 3/4	1 1/2-12	1 1/4-12	2	2.374	13/16	1 1/2	3 1/8	1 11/16	1 1/16	1 1/8	17/8	3 1/16	7 5/8	6 7/8	
8	1	1 3/8	1 1/4-12	1-14	15/8	1.999	7/8	1 1/8	2 1/2	15/16	3/4	7/8	15/8	2 3/4	—	6 3/4	
	3	1 3/4	1 1/2-12	1 1/4-12	2	2.374	13/16	1 1/2	3 1/8	1 11/16	1 1/16	1 1/8	17/8	3	—	7	

Table 3—Envelope and Mounting Dimensions

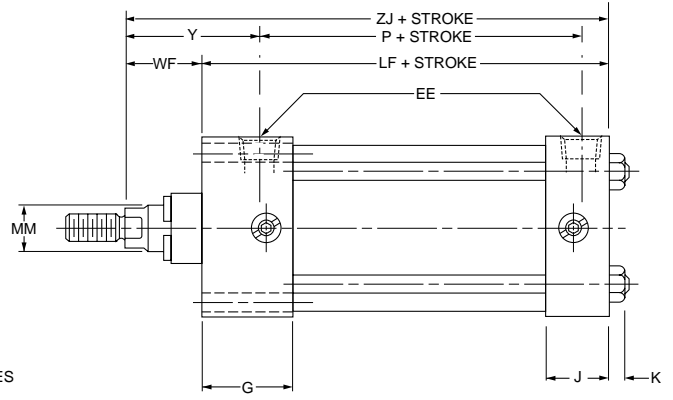
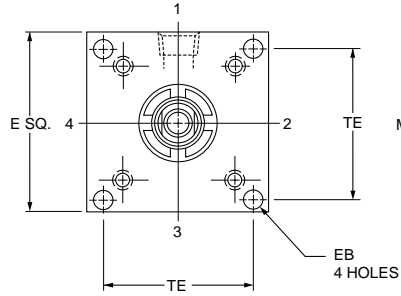
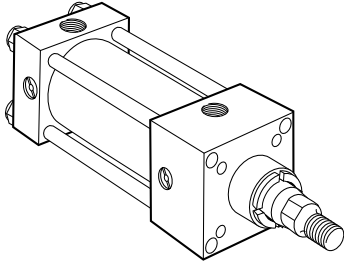
For Cylinder Division Plant Locations – See Section H.



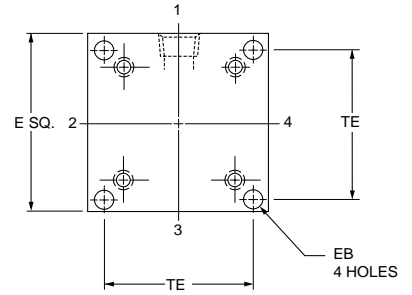
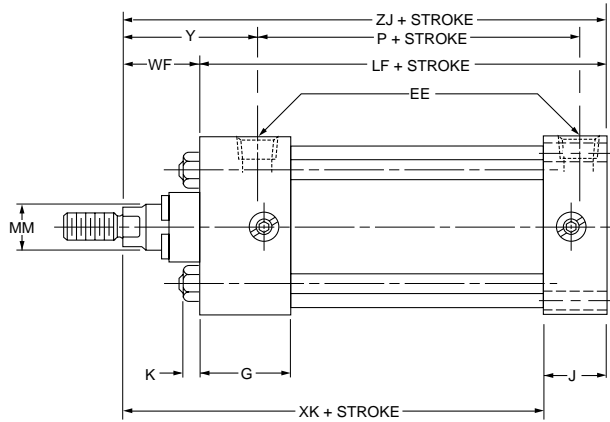
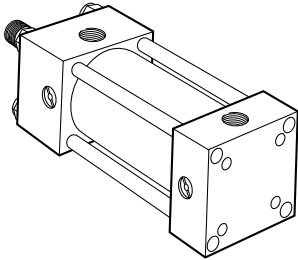
**Head Square Mount  
Cap Square Mount  
8" Bore Size**

**Series 2MA  
Air Cylinders**

**Head Square Mount  
Style JB  
(NFFPA ME3)**



**Cap Square Mount  
Style HB  
(NFFPA ME4)**



For additional information – call your local  
Parker Cylinder Distributor.



# Series 2MA Air Cylinders

Head Square Mount  
Cap Square Mount  
5" to 8" Bore Sizes

## Rod End Dimensions—Basic Cylinder

Thread Style 4  
(NFFA Style SM)  
Small Male

Thread Style 8  
(NFFA Style IM)  
Intermediate Male

Thread Style 9  
(NFFA Style SF)  
Short Female

### “Special Thread” Style 3

Special thread, extension, rod eye, blank, etc., are also available. To order specify “Style 3” and give desired dimensions for CC or KK, A and W or WF. If otherwise special, furnish dimensioned sketch.

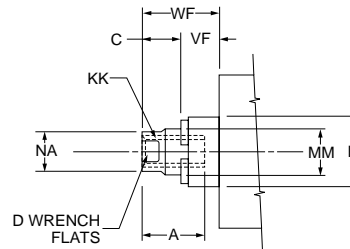
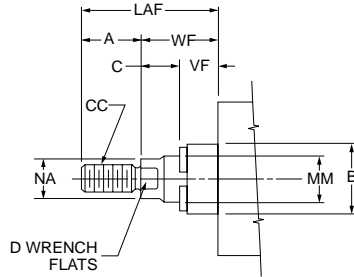
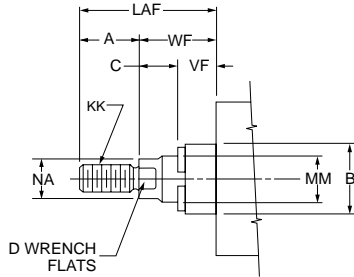


Table 1—Envelope and Mounting Dimensions

Bore	E	EB	EE (NPTF)	G	J	K	TE	ADD STROKE	
								LF	P
8	8 1/2	1 1/16	3/4	1.81	1.44	9/16	7.57	5 1/8	3 1/4

Table 2—Rod Dimensions

Bore Size	Rod No.	Rod		Thread		A	+.000 -.002 B	C	D	LAF	NA	VF	W	WF	Y	ADD STROKE	
		Dia MM	Style 8 CC	Style 4 & 9 KK	XK											ZJ	
8	1	1 3/8	1 1/4-12	1-14	15/8	1.999	7/8	1 1/8	3 1/4	1 5/16	3/4	7/8	1 5/8	2 3/4	5 5/16	6 3/4	
	3	1 3/4	1 1/2-12	1 1/4-12	2	2.374	1 3/16	1 1/2	3 7/8	1 1/16	1 1/16	1 1/8	1 7/8	3	5 9/16	7	

Table 3—  
Envelope  
and Mounting  
Dimensions

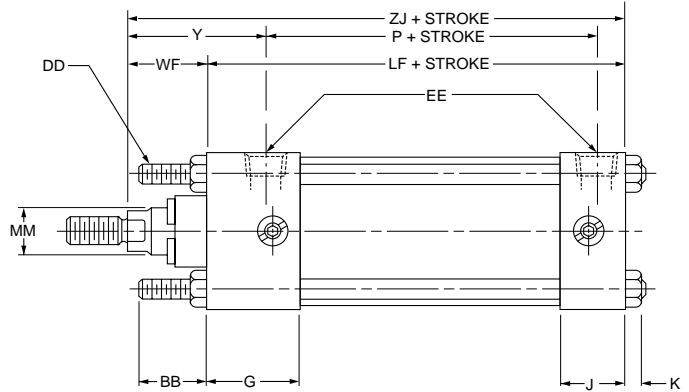
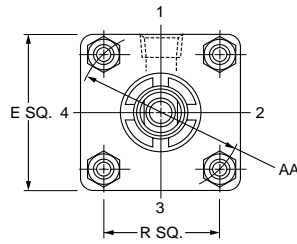
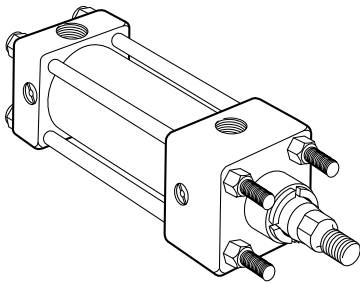
For Cylinder Division Plant Locations – See Section H.



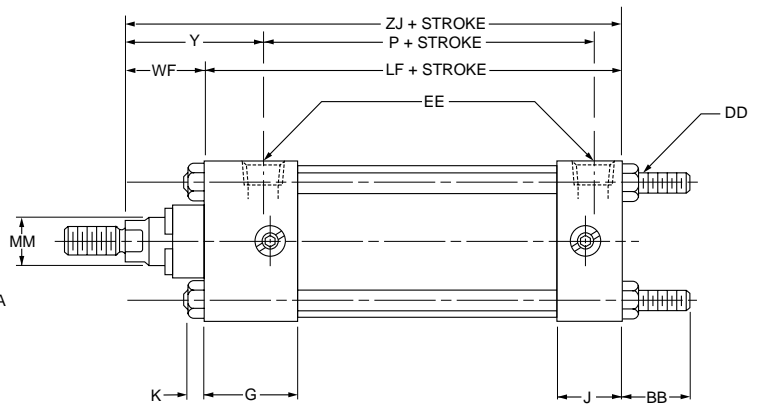
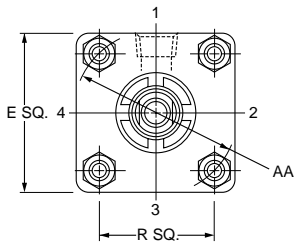
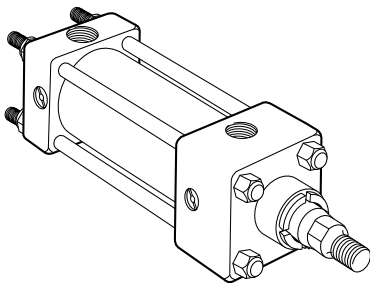
**Tie Rods Extended Head End Mount**  
**Tie Rods Extended Cap End Mount**  
**Tie Rods Extended Both Ends Mount**  
**Sleeve Nut Mount**  
**5" to 8" Bore Sizes**

**Series 2MA**  
**Air Cylinders**

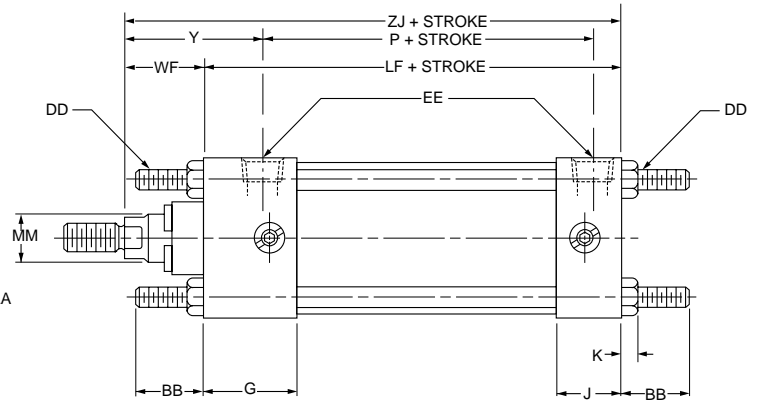
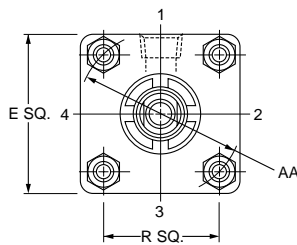
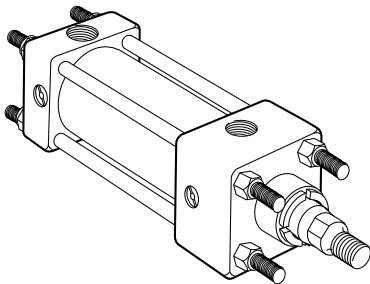
**Tie Rods Extended Head End Mount**  
**Style TB**  
**(NFA MX3)**



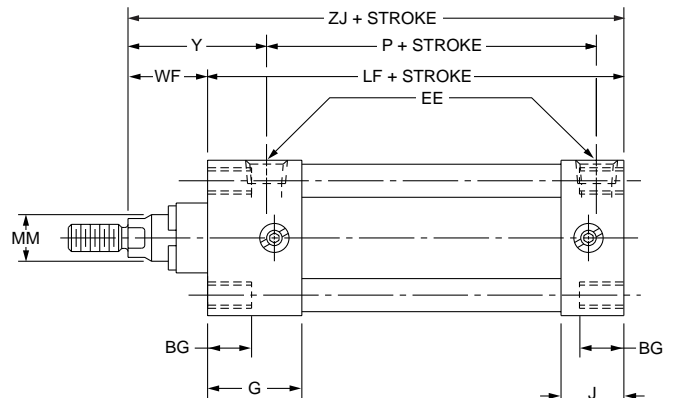
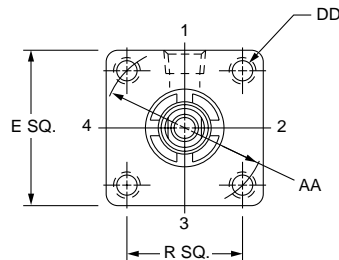
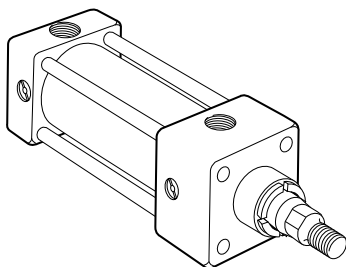
**Tie Rods Extended Cap End Mount**  
**Style TC**  
**(NFA MX2)**



**Tie Rods Extended Both Ends Mount**  
**Style TD**  
**(NFA MX1)**



**Sleeve Nut Mount**  
**Style TE**  
**(NFA MX5)**



For additional information – call your local  
 Parker Cylinder Distributor.



# Series 2MA Air Cylinders

Tie Rods Extended Head End Mount  
Tie Rods Extended Cap End Mount  
Tie Rods Extended Both Ends Mount  
Sleeve Nut Mount  
5" to 8" Bore Sizes

## Rod End Dimensions—Basic Cylinder

Thread Style 4  
(NFWA Style SM)  
Small Male

Thread Style 8  
(NFWA Style IM)  
Intermediate Male

Thread Style 9  
(NFWA Style SF)  
Short Female

**“Special Thread”  
Style 3**

Special thread, extension, rod eye, blank, etc., are also available. To order specify “Style 3” and give desired dimensions for CC or KK, A and W or WF. If otherwise special, furnish dimensioned sketch.

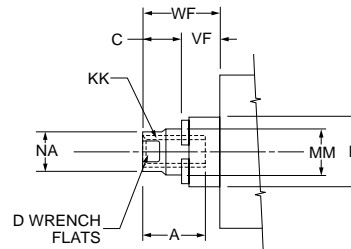
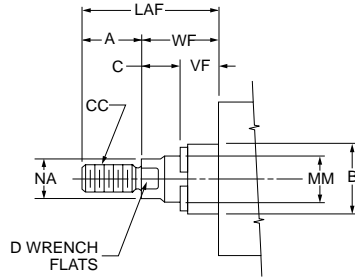
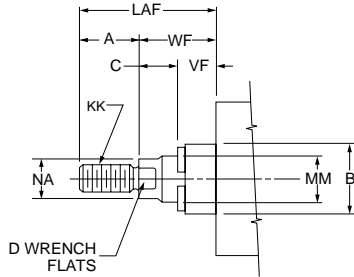


Table 1—Envelope and Mounting Dimensions

Bore	AA	BB	BG	DD	E	EE (NPTF)	G	J	K	R	ADD STROKE	
											LF	P
5	5.8	1 <sup>13</sup> / <sub>16</sub>	.50	1/2-20	5 1/2	1/2	1.66	1.22	7/16	4.10	4 1/2	27/8
6	6.9	1 <sup>13</sup> / <sub>16</sub>	.50	1/2-20	6 1/2	3/4	1.91	1.41	7/16	4.88	5	3 1/8
8	9.1	2 <sup>5</sup> / <sub>16</sub>	.62	5/8-18	8 1/2	3/4	1.81	1.44	9/16	6.44	5 1/8	3 1/4

Table 2—Rod Dimensions

Bore Size	Rod No.	Rod		Thread		A	+.000 -.002 B	C	D	LAF	NA	VF	W	WF	Y	ADD STROKE ZJ
		Dia MM	Style 8 CC	Style 4 & 9 KK												
5	1	1	7/8-14	3/4-16	11/8	1.499	5/8	7/8	2 1/2	15/16	3/4	3/4	13/8	27/16	57/8	
	3	13/8	1 1/4-12	1-14	15/8	1.999	7/8	1 1/8	3 1/4	15/16	3/4	1	15/8	2 11/16	6 1/8	
6	1	13/8	1 1/4-12	1-14	15/8	1.999	7/8	1 1/8	3 1/4	15/16	3/4	7/8	15/8	2 13/16	6 5/8	
	3	13/4	1 1/2-12	1 1/4-12	2	2.374	13/16	1 1/2	3 7/8	1 11/16	1 1/16	1 1/8	17/8	3 1/16	6 7/8	
8	1	13/8	1 1/4-12	1-14	15/8	1.999	7/8	1 1/8	3 1/4	15/16	3/4	7/8	15/8	2 3/4	6 3/4	
	3	13/4	1 1/2-12	1 1/4-12	2	2.374	13/16	1 1/2	3 7/8	1 11/16	1 1/16	1 1/8	17/8	3	7	

Table 3—Envelope and Mounting Dimensions

For Cylinder Division Plant Locations – See Section H.

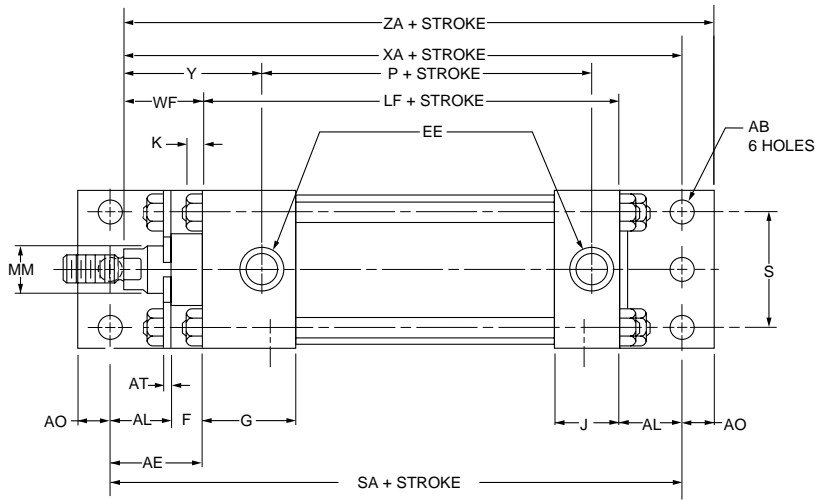
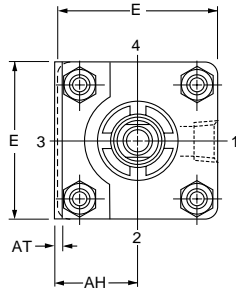
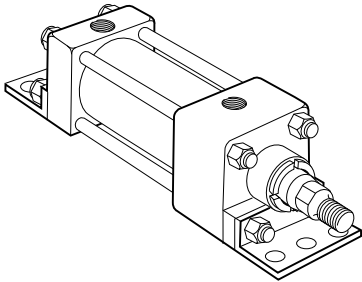




**Side End Angle Mount  
5" to 8" Bore Sizes**

**Series 2MA  
Air Cylinders**

**Side End Angle Mount  
Style CB  
(NFPA MS1)**



For additional information – call your local  
Parker Cylinder Distributor.



# Series 2MA Air Cylinders

Side End Angle Mount  
5" to 8" Bore Sizes

## Rod End Dimensions—Basic Cylinder

Thread Style 4  
(NFA Style SM)  
Small Male

Thread Style 8  
(NFA Style IM)  
Intermediate Male

Thread Style 9  
(NFA Style SF)  
Short Female

**“Special Thread”  
Style 3**

Special thread, extension, rod eye, blank, etc., are also available. To order specify “Style 3” and give desired dimensions for CC or KK, A and W or WF. If otherwise special, furnish dimensioned sketch.

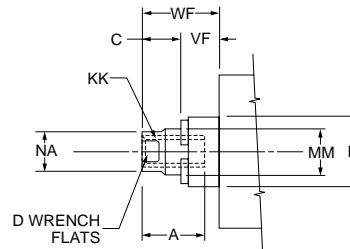
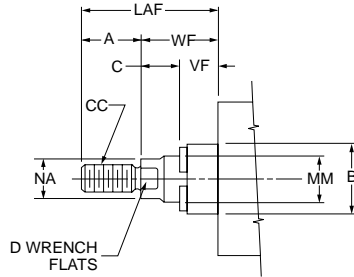
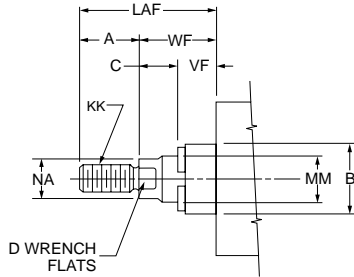


Table 1—Envelope and Mounting Dimensions

Bore	AB	AE	AH	AL	AO	AT	E	EE (NPTF)	F	G	J	K	R	S	ADD STROKE		
															LF	P	SA
5	11/16	2	2 3/4	1 3/8	5/8	3/16	5 1/2	1/2	5/8	1.66	1.22	7/16	4.10	4 1/4	4 1/2	2 7/8	7 7/8
6	13/16	2 1/8	3 1/4	1 3/8	5/8	3/16	6 1/2	3/4	3/4	1.91	1.41	7/16	4.88	5 1/4	5	3 1/8	8 1/2
8	13/16	1 13/16	4 1/4	1 13/16	1 1/16	1/4	8 1/2	3/4	—	1.81	1.44	9/16	6.44	7 1/8	5 1/8	3 1/4	8 3/4

Table 2—Rod Dimensions

Bore Size	Rod No.	Rod		Thread		A	+0.000 -0.002 B	C	D	LAF	NA	VF	W	WF	Y	ADD STROKE	
		Dia MM	Style 8 CC	Style 4 & 9 KK	XA											ZA	
5	1	1	7/8-14	3/4-16	1 1/8	1.499	5/8	7/8	2 1/2	15/16	3/4	3/4	13/8	27/16	7 1/4	7 7/8	
	3	1 3/8	1 1/4-12	1-14	1 5/8	1.999	7/8	1 1/8	3 1/4	15/16	3/4	1	15/8	2 11/16	7 1/2	8 1/8	
6	1	1 3/8	1 1/4-12	1-14	1 5/8	1.999	7/8	1 1/8	3 1/4	15/16	3/4	7/8	5/8	2 13/16	8	8 5/8	
	3	1 3/4	1 1/2-12	1 1/4-12	2	2.374	13/16	1 1/2	3 7/8	1 1/16	1 1/16	1 1/8	17/8	3 1/16	8 1/4	8 7/8	
8	1	1 3/8	1 1/4-12	1-14	1 5/8	1.999	7/8	1 1/8	3 1/4	15/16	3/4	7/8	15/8	2 3/4	8 9/16	9 1/4	
	3	1 3/4	1 1/2-12	1 1/4-12	2	2.374	13/16	1 1/2	3 7/8	1 1/16	1 1/16	1 1/8	17/8	3	8 13/16	9 1/2	

Table 3—  
Envelope and  
Mounting Dimensions

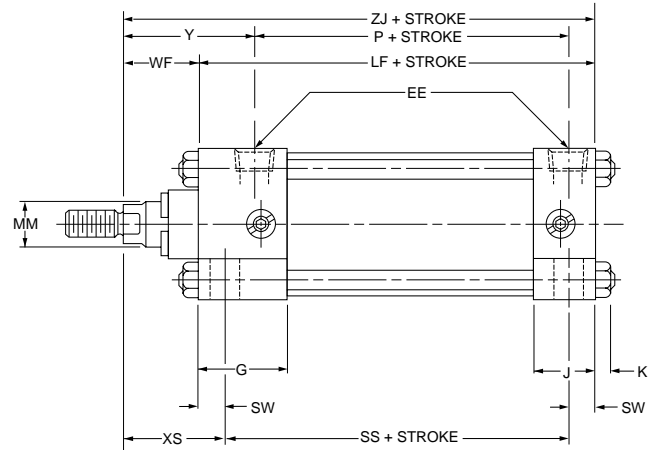
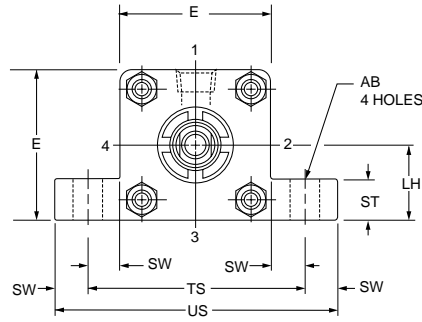
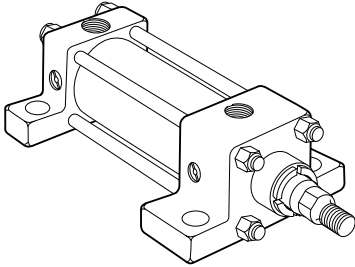
For Cylinder Division Plant Locations – See Section H.



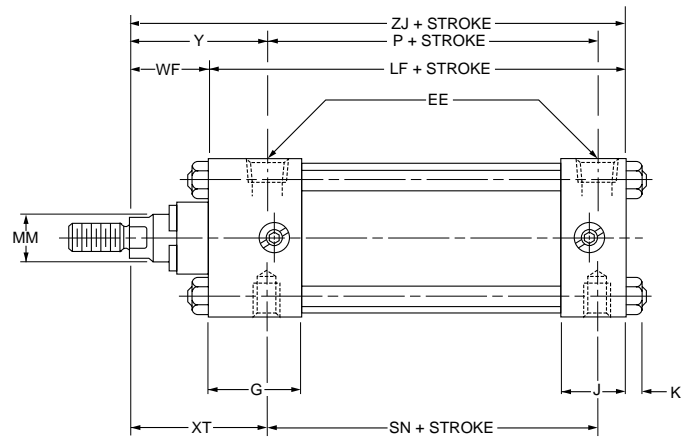
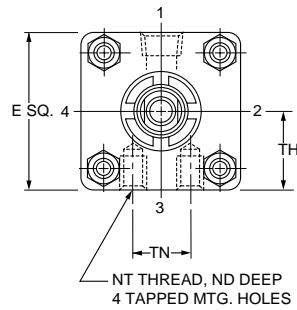
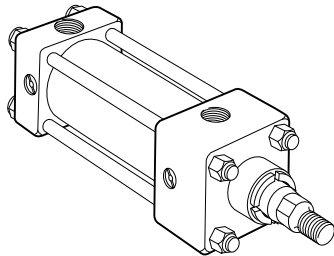
**Side Lug Mount  
Side Tap Mount  
5" to 8" Bore Sizes**

**Series 2MA  
Air Cylinders**

**Side Lug Mount  
Style C  
(NFPA MS2)**



**Side Tap Mount  
Style F  
(NFPA MS4)**



For additional information – call your local  
Parker Cylinder Distributor.



# Series 2MA Air Cylinders

Side Lug Mount  
Side Tap Mount  
5" to 8" Bore Sizes

## Rod End Dimensions—Basic Cylinder

Thread Style 4  
(NFA Style SM)  
Small Male

Thread Style 8  
(NFA Style IM)  
Intermediate Male

Thread Style 9  
(NFA Style SF)  
Short Female

### “Special Thread” Style 3

Special thread, extension, rod eye, blank, etc., are also available. To order specify “Style 3” and give desired dimensions for CC or KK, A and W or WF. If otherwise special, furnish dimensioned sketch.

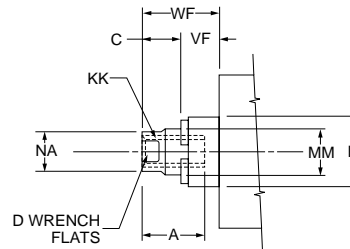
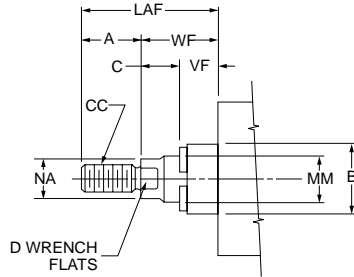
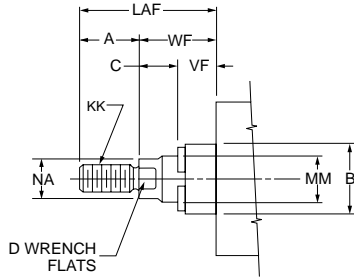


Table 1—Envelope and Mounting Dimensions

Bore	AB	E	EE (NPTF)	G	J	K	LH ±.003	NT	ST	SW	TH ±.003	TN	TS	US	ADD STROKE			
															LF	P	SN	SS
5	13/16	5 1/2	1/2	1.66	1.22	7/16	2.743	5/8-11	1	11/16	2.743	2 11/16	6 7/8	8 1/4	4 1/2	2 7/8	2 7/8	3 1/8
6	13/16	6 1/2	3/4	1.91	1.41	7/16	3.243	3/4-10	1	11/16	3.243	3 1/4	7 7/8	9 1/4	5	3 1/8	3 1/8	3 5/8
8	13/16	8 1/2	3/4	1.81	1.44	9/16	4.243	3/4-10	1	11/16	4.243	4 1/2	9 7/8	11 1/4	5 1/8	3 1/4	3 1/4	3 3/4

Table 2—Rod Dimensions

Bore Size	Rod No.	Rod		Thread		A	+.000 -.002 B	C	D	LAF	NA	VF	W	WF	Y	ADD STROKE			
		Dia MM	Style 8 CC	Style 4 & 9 KK	ND											XS	XT	ZJ	
5	1	1	7/8-14	3/4-16	1 1/8	1.499	5/8	7/8	2 1/2	15/16	3/4	3/4	13/8	2 7/16	15/16	2 1/16	2 7/16	5 7/8	
	3	13/8	1 1/4-12	1-14	1 5/8	1.999	7/8	1 1/8	3 1/4	15/16	3/4	1	15/8	2 11/16	15/16	2 5/16	2 11/16	6 1/8	
6	1	13/8	1 1/4-12	1-14	1 5/8	1.999	7/8	1 1/8	3 1/4	15/16	3/4	7/8	15/8	2 13/16	1 1/8	2 5/16	2 13/16	6 5/8	
	3	13/4	1 1/2-12	1 1/4-12	2	2.374	13/16	1 1/2	3 7/8	1 11/16	1 1/16	1 1/8	1 7/8	3 1/16	1 1/8	2 9/16	3 1/16	6 7/8	
8	1	13/8	1 1/4-12	1-14	1 5/8	1.999	7/8	1 1/8	3 1/4	15/16	3/4	7/8	15/8	2 3/4	1 1/8	2 5/16	2 13/16	6 3/4	
	3	13/4	1 1/2-12	1 1/4-12	2	2.374	13/16	1 1/2	3 7/8	1 11/16	1 1/16	1 1/8	1 7/8	3	1 1/8	2 9/16	3 1/16	7	

Table 3—  
Envelope and  
Mounting Dimensions

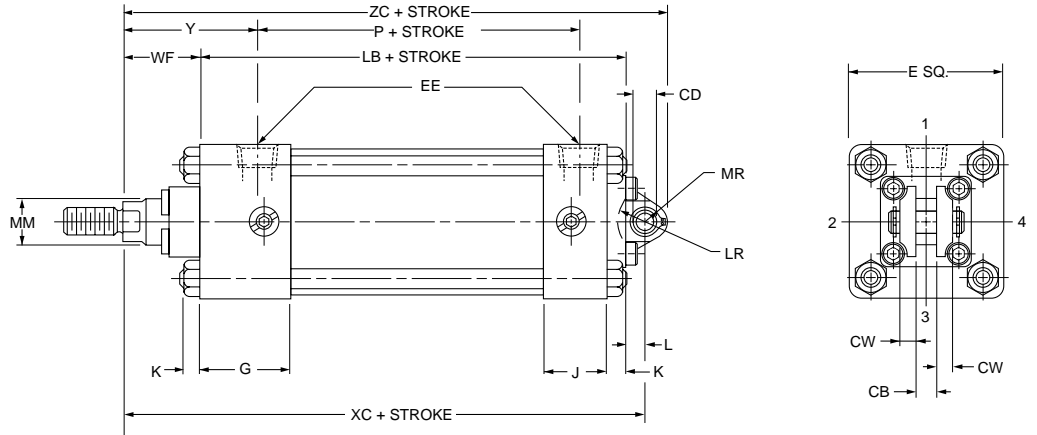
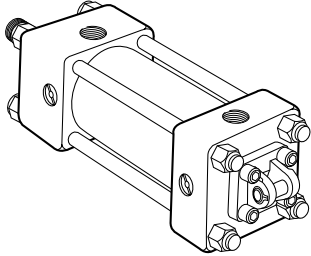
For Cylinder Division Plant Locations – See Section H.



Cap Fixed Clevis Mount  
 Cap Detachable Clevis  
 Cap Detachable Eye Mount  
 5" to 8" Bore Sizes

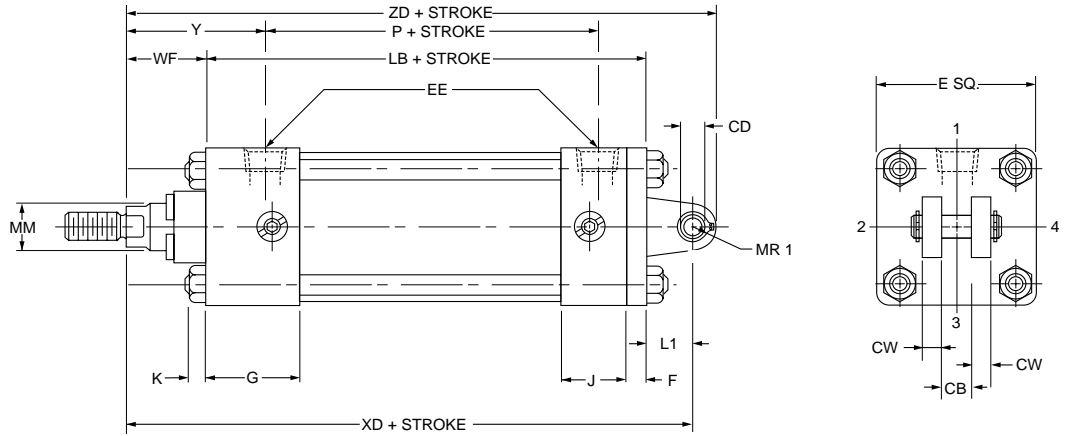
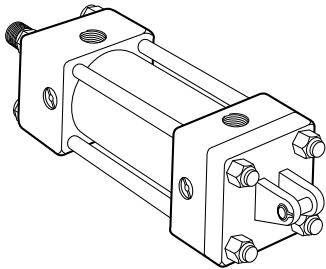
Series 2MA  
 Air Cylinders

Cap Fixed Clevis  
 Style BB  
 (NFPA MP1)

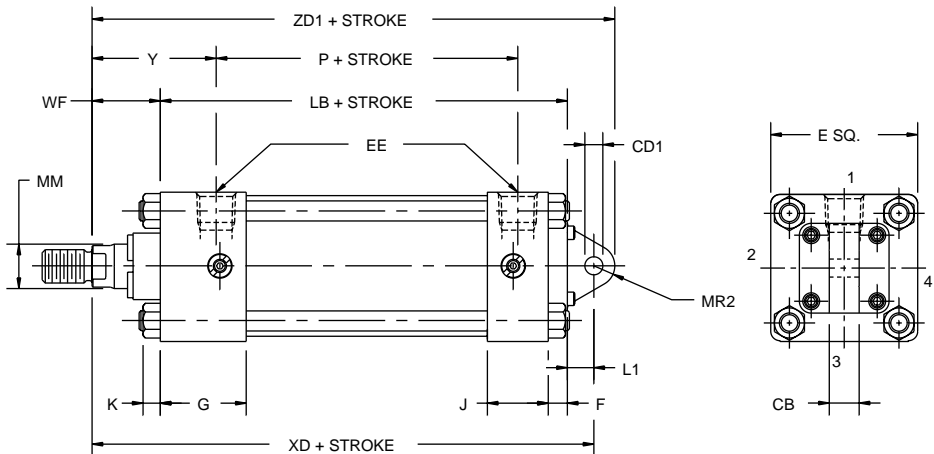
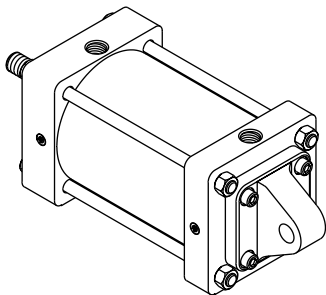


For maximum swivel angle with rear mounting plate for "BB" mounting see Series 2MA cylinder accessories.

Cap Detachable Clevis  
 Style BC  
 (NFPA MP2)



Cap Detachable Eye Mount\*  
 Style BE  
 (NFPA MP4)



\* 5" and 6" Bore only.

For additional information – call your local  
 Parker Cylinder Distributor.

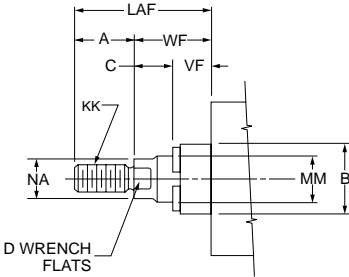


# Series 2MA Air Cylinders

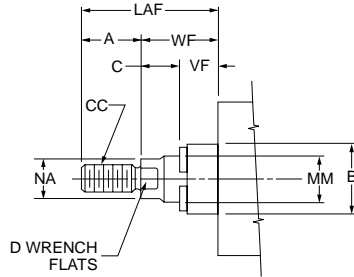
Cap Fixed Clevis Mount  
Cap Detachable Clevis  
Cap Detachable Eye Mount  
5" to 8" Bore Sizes

## Rod End Dimensions—Basic Cylinder

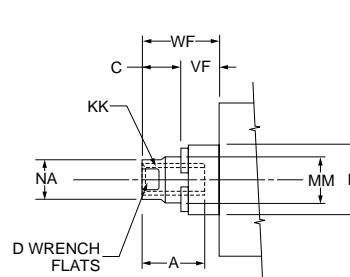
Thread Style 4  
(NFA Style SM)  
Small Male



Thread Style 8  
(NFA Style IM)  
Intermediate Male



Thread Style 9  
(NFA Style SF)  
Short Female



**“Special Thread” Style 3**  
Special thread, extension, rod eye, blank, etc., are also available. To order specify “Style 3” and give desired dimensions for CC or KK, A and W or WF. If otherwise special, furnish dimensioned sketch.

Table 1—Envelope and Mounting Dimensions

Bore	CB	+0.00 CD▲ -0.002	+0.02 CD1▲ +0.004	CW	E	EE (NPTF)	F	G	J	K	L	L1	LR	M	MR1	MR2	ADD STROKE	
																	LB	P
5	1 1/4	.751	.750	5/8	5 1/2	1/2	5/8	1.66	1.22	7/16	5/8	1 1/4	1	15/16	3/4	7/8	5 1/8	27/8
6	1 1/2	1.001	1.00	3/4	6 1/2	3/4	3/4	1.91	1.41	7/16	3/4	1 1/2	1 1/4	1 1/8	1	1 1/8	5 3/4	3 1/8
8	1 1/2	1.001	—	3/4	8 1/2	3/4	3/4	1.81	1.44	9/16	3/4	1 1/2	1 1/4	1 1/8	1	—	5 7/8	3 1/4

▲Dimension CD is pin diameter.

Table 2—Rod Dimensions

Bore Size	Rod No.	Rod		Thread		A	+0.00 -0.002 B	C	D	LAF	NA	VF	W	WF	Y	ADD STROKE				
		Dia MM	Style 8 CC	Style 4 & 9 KK	Style 8 CC											Style 4 & 9 KK	XC	XD	ZC	ZD
5	1	1	7/8-14	3/4-16	1 1/8	1.499	5/8	7/8	2 1/2	15/16	3/4	3/4	13/8	27/16	7 1/8	7 3/4	8 1/16	8 1/2	8 5/8	
	3	1 3/8	1 1/4-12	1-14	15/8	1.999	7/8	1 1/8	3 1/4	15/16	3/4	1	15/8	2 11/16	7 3/8	8	8 5/16	8 3/4	—	
6	1	1 3/8	1 1/4-12	1-14	15/8	1.999	7/8	1 1/8	3 1/4	15/16	3/4	7/8	15/8	2 13/16	8 1/8	8 7/8	9 1/4	9 7/8	10	
	3	1 3/4	1 1/2-12	1 1/4-12	2	2.374	13/16	1 1/2	3 7/8	1 11/16	1 1/16	1 1/8	17/8	3 1/16	8 3/8	9 1/8	9 1/2	10 1/8	—	
8	1	1 3/8	1 1/4-12	1-14	15/8	1.999	7/8	1 1/8	3 1/4	15/16	3/4	7/8	15/8	2 3/4	8 1/4	9	9 3/8	10	—	
	3	1 3/4	1 1/2-12	1 1/4-12	2	2.374	13/16	1 1/2	3 7/8	1 11/16	1 1/16	1 1/8	17/8	3	8 1/2	9 1/4	9 5/8	10 1/4	—	

Table 3—  
Envelope and  
Mounting Dimensions

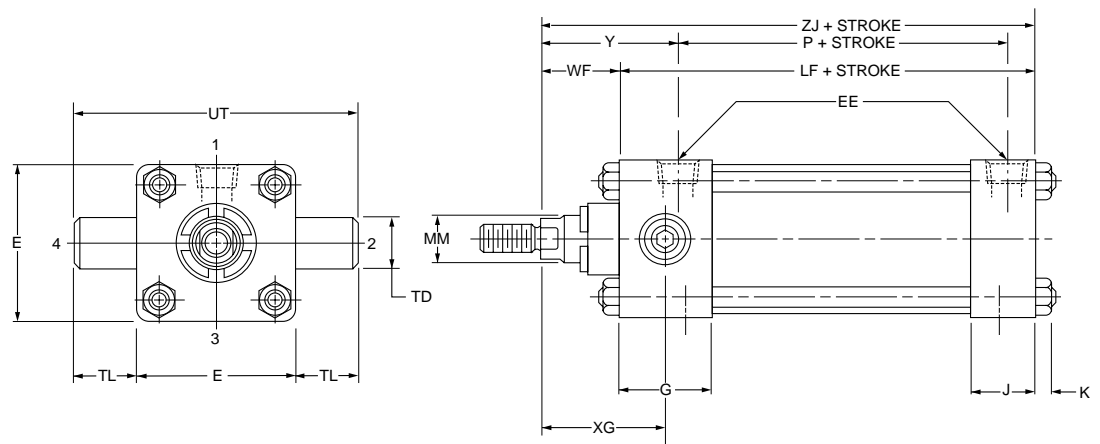
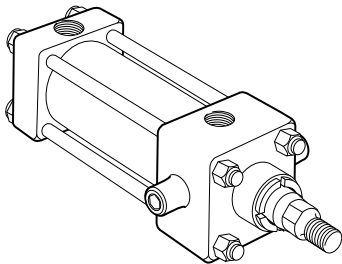
For Cylinder Division Plant Locations – See Section H.



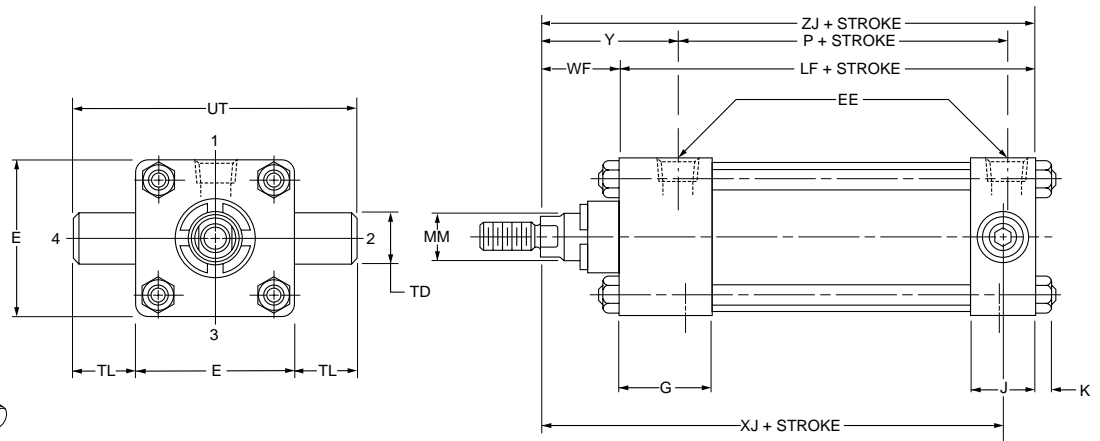
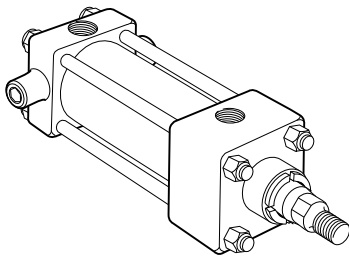
Head Trunnion Mount  
 Cap Trunnion Mount  
 Intermediate Trunnion Mount  
 5" to 8" Bore Sizes

Series 2MA  
 Air Cylinders

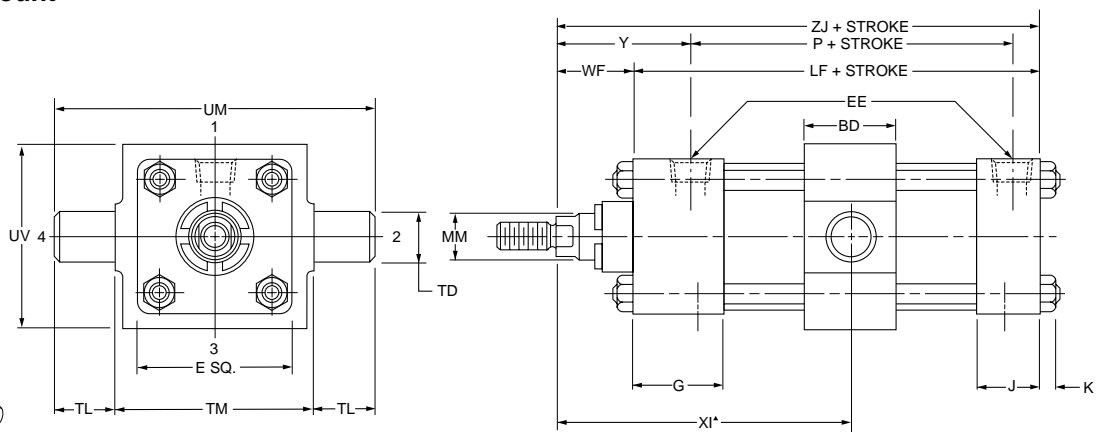
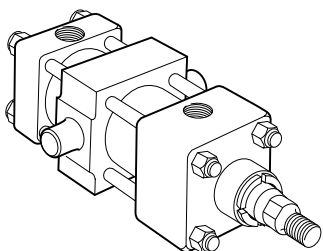
Head Trunnion Mount  
 Style D  
 (NFPA MT1)



Cap Trunnion Mount  
 Style DB  
 (NFPA MT2)



Intermediate Trunnion Mount  
 Style DD  
 (NFPA MT4)



▲Dimension "XI" to be specified by customer.

For additional information – call your local  
 Parker Cylinder Distributor.



# Series 2MA Air Cylinders

Head Trunnion Mount  
Cap Trunnion Mount  
Intermediate Trunnion Mount  
5" to 8" Bore Sizes

## Rod End Dimensions—Basic Cylinder

Thread Style 4  
(NFA Style SM)  
Small Male

Thread Style 8  
(NFA Style IM)  
Intermediate Male

Thread Style 9  
(NFA Style SF)  
Short Female

**"Special Thread" Style 3**

Special thread, extension, rod eye, blank, etc., are also available. To order specify "Style 3" and give desired dimensions for CC or KK, A and W or WF. If otherwise special, furnish dimensioned sketch.

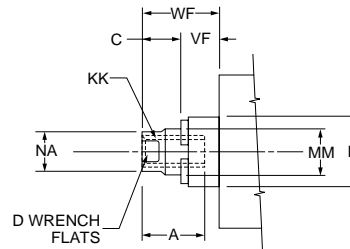
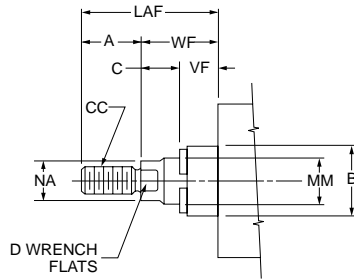
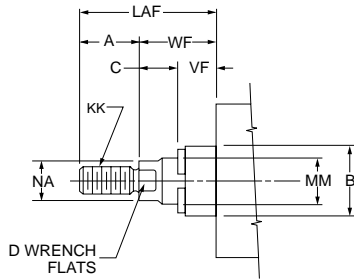


Table 1—Envelope and Mounting Dimensions

Bore	BD	E	EE (NPTF)	G	J	K	+.000 TD -.001	TL	TM	UM	UT	UV	ADD STROKE		Style DD Minimum Stroke
													LF	P	
5	2	5 1/2	1/2	1.66	1.22	7/16	1.000	1	6 1/4	8 1/4	7 1/2	6	4 1/2	27/8	3/8
6	2 1/2	6 1/2	3/4	1.91	1.41	7/16	1.375	1 3/8	7 5/8	10 3/8	9 1/4	7	5	3 1/8	7/8
8	2 1/2	8 1/2	3/4	1.81	1.44	9/16	1.375	1 3/8	9 3/4	12 1/2	11 1/4	9 1/2	5 1/8	3 1/4	5/8

Table 2—Rod Dimensions

Table 3—Envelope and Mounting Dimensions

Bore Size	Rod No.	Rod		Thread		A	+.000 -.002 B	C	D	LAF	NA	VF	W	WF	Y	XG	▲ Min. XI	ADD STROKE	
		Dia MM		Style 8 CC	Style 4 & 9 KK													XJ	ZJ
5	1	1		7/8-14	3/4-16	1 1/8	1.499	5/8	7/8	2 1/2	15/16	3/4	3/4	13/8	27/16	2 1/4	43/16	5 1/4	57/8
	3	1 3/8		1 1/4-12	1-14	1 5/8	1.999	7/8	1 1/8	3 1/4	15/16	3/4	1	1 5/8	2 11/16	2 1/2	47/16	5 1/2	6 1/8
6	1	1 3/8		1 1/4-12	1-14	1 5/8	1.999	7/8	1 1/8	3 1/4	15/16	3/4	7/8	1 5/8	2 13/16	2 5/8	4 15/16	57/8	6 5/8
	3	1 3/4		1 1/2-12	1 1/4-12	2	2.374	13/16	1 1/2	3 7/8	1 11/16	1 1/16	1 1/8	1 7/8	3 1/16	2 7/8	5 3/16	6 1/8	6 7/8
8	1	1 3/8		1 1/4-12	1-14	1 5/8	1.999	7/8	1 1/8	3 1/4	15/16	3/4	7/8	1 5/8	2 3/4	2 5/8	4 15/16	6	6 3/4
	3	1 3/4		1 1/2-12	1 1/4-12	2	2.374	13/16	1 1/2	3 7/8	1 11/16	1 1/16	1 1/8	1 7/8	3	2 7/8	5 3/16	6 1/4	7

▲Dimension "XI" to be specified by customer.

For Cylinder Division Plant Locations – See Section H.



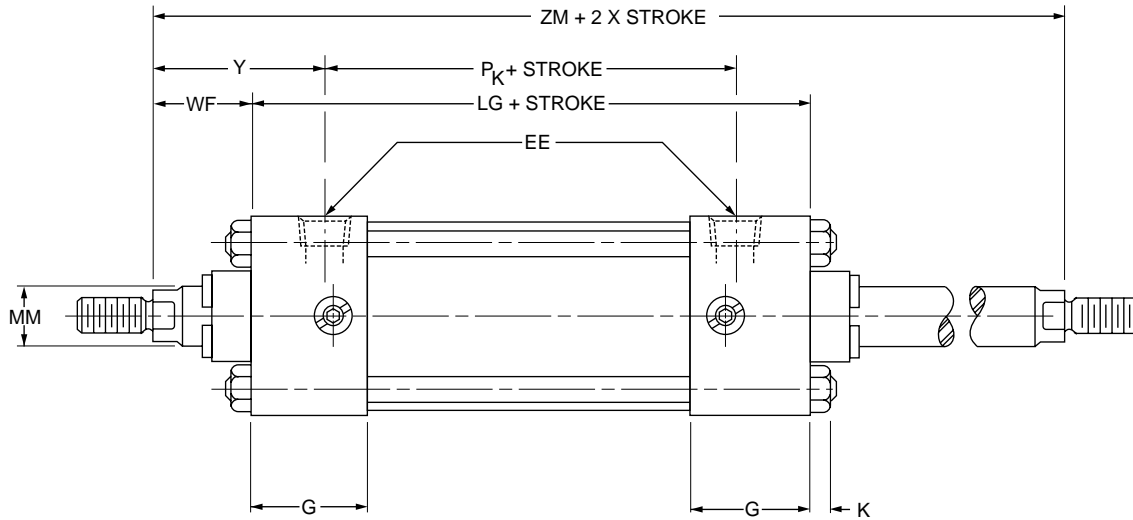


## How to Use Double Rod Cylinder Dimensioned Drawings

To determine dimensions for a double rod cylinder, first refer to the desired single rod mounting style cylinder shown on preceding pages of this catalog. (See table below.) After selecting necessary dimensions from that drawing, return to this page supplement the single rod dimensions with those shown on drawings below and dimension table below. Note that double rod cylinders have a head (Dim. G) at both ends and that dimension LG replaces LF and

$P_K$  replaces P etc. The double rod dimensions differ from, or are in addition to those for single rod cylinders shown on preceding pages and provide the information needed to completely dimension a double rod cylinder.

On a double rod cylinder where the two rod ends are different, be sure to clearly state which rod end is to be assembled at which end.



Bore	Rod Dia.	ADD STROKE						Add 2X Stroke
	MM	LG	$P_K$	$SA_K$	$XA_K$	$SS_K$	$SN_K$	ZM
5	1	$4^{15/16}$	$2^{13/16}$	$7^{11/16}$	$7^{11/16}$	$3^{9/16}$	$2^{13/16}$	$7^{11/16}$
6	$1\frac{3}{8}$	$5\frac{1}{2}$	$3\frac{1}{8}$	$8\frac{1}{4}$	$8\frac{1}{2}$	$4\frac{1}{8}$	$3\frac{1}{8}$	$8\frac{3}{4}$
8	$1\frac{3}{8}$	$5\frac{1}{2}$	$3\frac{1}{4}$	$9\frac{1}{8}$	$8\frac{15}{16}$	$4\frac{1}{8}$	$3\frac{1}{8}$	$8\frac{3}{4}$
REPLACES DIMENSION		LF	P	SA	XA	SS	SN	—
ON SINGLE ROD MOUNTING STYLES		ALL MTG STYLES		CB	C	F	ALL MTG STYLES	

All dimensions are in inches and apply to standard rod sizes only. For alternate rod sizes, determine all envelope dimensions (within LD dim.) as described above and then use appropriate rod end dimensions for proper rod size from single rod cylinder.

For additional information – call your local  
Parker Cylinder Distributor.