
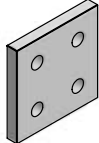
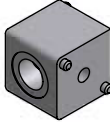
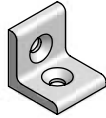
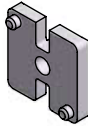

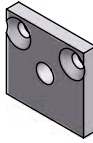

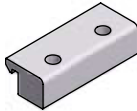
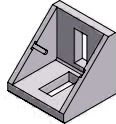
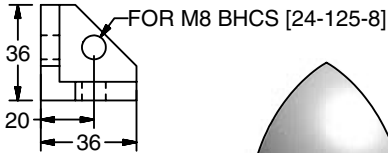
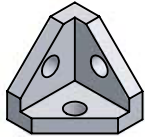


Section 3 Brackets, Gussets & Plates

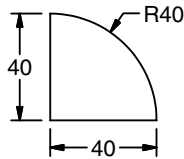
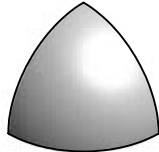
Corner Brackets	90		Joining Plates	94-95	
Corner Connectors	91		Connecting Elements	96-97	
T-Joints	92		Machined Gussets	98	
Mounting Plate	93		Corner Elements	99	
Clamp Block	93		Cast Gussets	100	

**Brackets,
 Gussets & Plates**

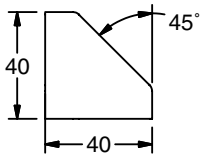
Corner Bracket



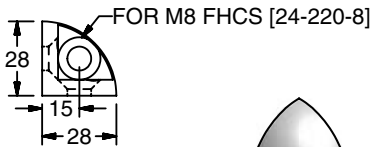
22-146



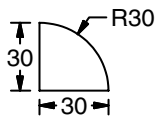
18-821



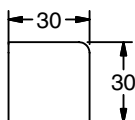
18-822



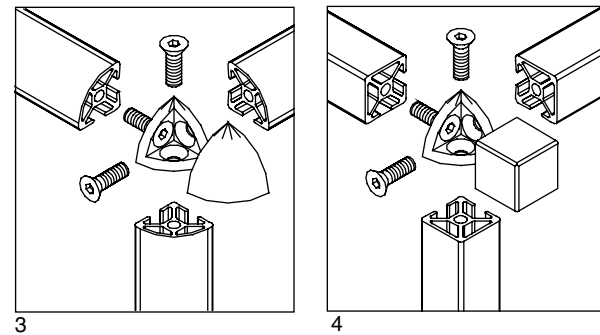
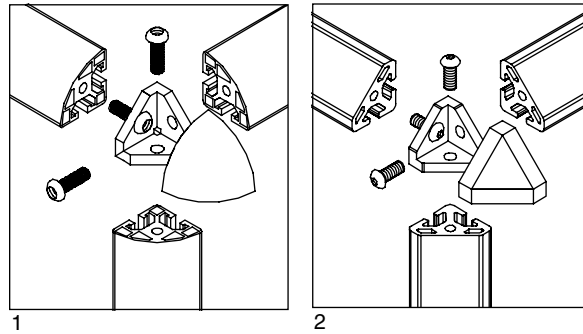
22-150



22-151



22-152



Application

Corner brackets are used for connecting 40 and 30 Series profiles at right angles. Ideal for construction of display cases, tables, cover hoods or anywhere a protected corner is desired. Caps are designed to match the contour of the profile.

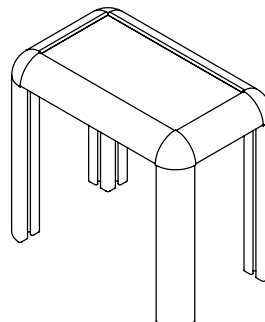
Technical Data

Bracket: Die Cast Zinc
 End Cap: Glass-filled Nylon, Black
 Profile ends must be tapped for M8 screws (included with set).

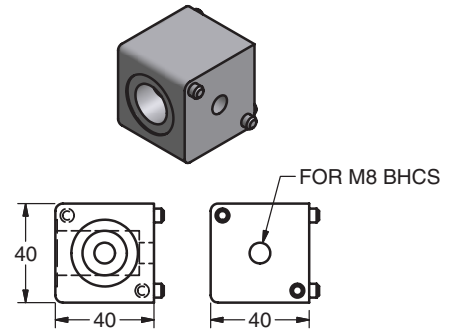
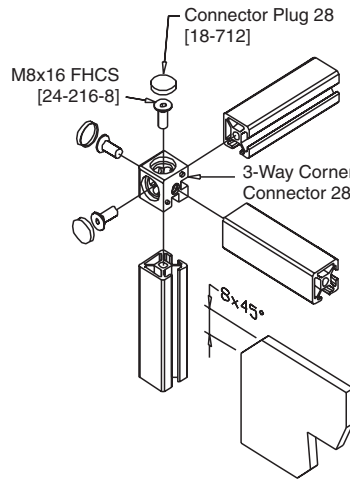
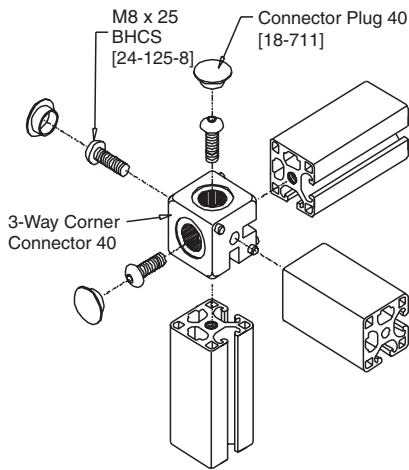
Ordering Information

Series	Description	Unit	Weight	Part #
40	Corner Bracket 40	Set	120 g	22-146
	Radius Connector Cap 40	Each	8 g	18-821
	3x45° Connector Cap 40	Each	9 g	18-822
30	Corner Bracket 30	Set	69 g	22-150
	Radius Connector Cap 30	Each	4 g	22-151
	Square Connector Cap 30	Each	7 g	22-152

* For Machining M8 Tap use part number 19-010 for each profile end



Corner Connector



18-826

Application

Corner connectors are designed for use with 40 or 28 Series closed face profiles. Suitable for clean room environments they include access plugs to cover hardware.

Order all hardware separately

40 Series - M8x25 BHCS (24-125-8)

28 Series - M8x16 FHCS (24-216-8)

Technical Data

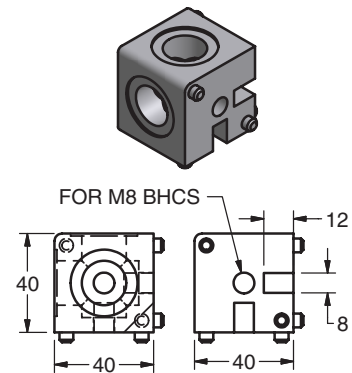
40 Series

Block: Die Cast Zinc, Powder Coat
 Plug: Low density polyethylene

28 Series

Block: Aluminum, Black Anodized
 Plug: Acetal (Delrin)

Profile ends must be tapped for M8 screws. Hardware not included.

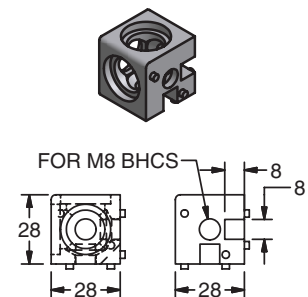


18-827

Ordering Information

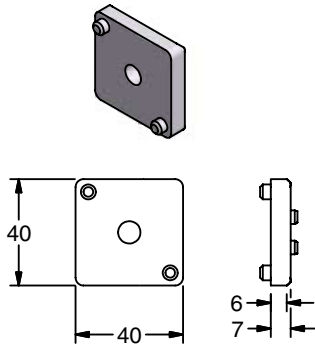
Series	Description	Unit	Weight	Part #
40	2-Way Corner Connector 40 w/ 2 plugs	Set	0.26 kg	18-826
	3-Way Corner Connector 40 w/ 3 plugs	Set	0.26 kg	18-827
	Connector Plug 40	Each	1 g	18-711
28	3-Way Corner Connector 28 w/ 3 plugs	Set	25 g	18-829
	Connector Plug 28	Each	1 g	18-712

* For Machining M8 Tap use part number 19-010 for each profile end

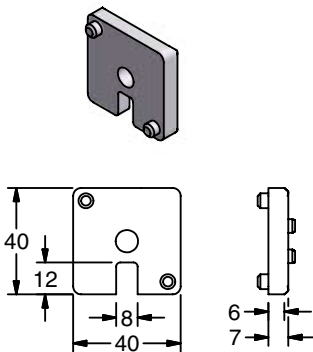


18-829

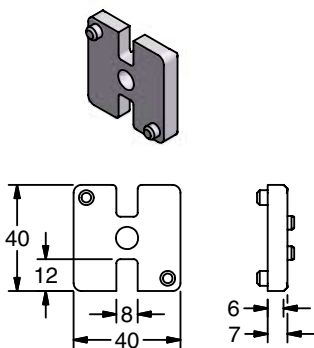
T-Joint Connector



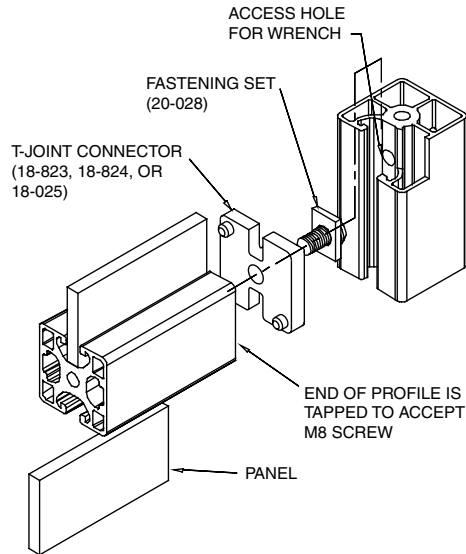
18-823



18-824



18-825



Application

Designed to reduce the cavity of profile radius on a T- or corner connection with 40 Series profiles. Suitable for clean room environments.

Technical Data

Zinc Cast, Clear Chromate Finish

Order all hardware separately.

Fastening set 20-028 included one flat plate and one M8x20 BHCS.

Ordering Information

Series	Description	Unit	Weight	Part #
40	T-Joint Connector 40, No Notch	Each	57 g	18-823
	T-Joint Connector 40, Single Notch	Each	55 g	18-824
	T-Joint Connector 40, Double Notch	Each	55 g	18-825
	T-Connector Fastening Set	Each	15 g	20-029

* For Machining M8 Tap use part number 19-010 for each profile end

Mounting Plate

Application

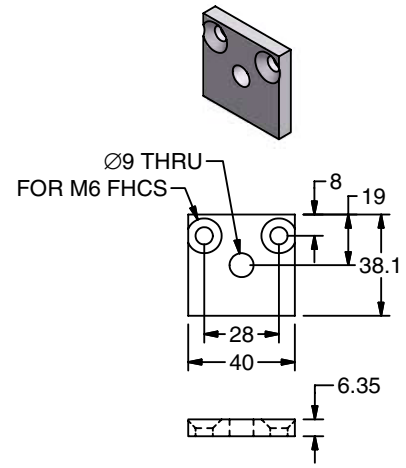
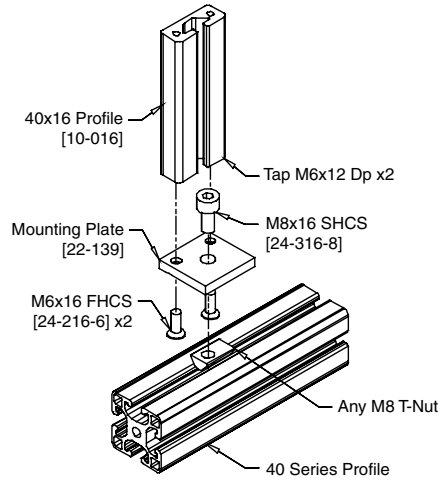
Designed to mount 40x16 profile (10-016) at 90° angle to any 40 series profile.

Technical Data

Aluminum, Clear Anodized

Requires the following hardware:

- (1) M8x16 SHCS [24-316-8]
- (1) M8 T-Nut [20-058]
- (2) M6x16 FHCS [24-216-6]

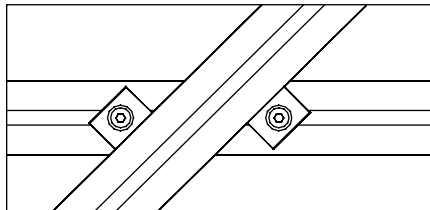


22-139

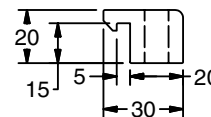
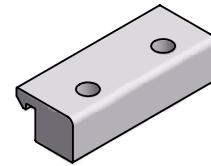
Ordering Information

Series	Description	Unit	Weight	Part #
40	Mounting Plate for 40x16 profile	Each	19 g	22-139

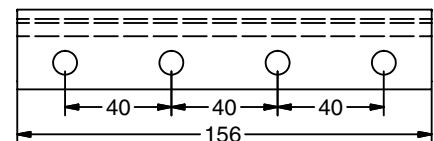
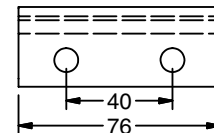
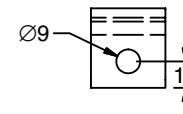
Brackets,
Gussets & Plates



Clamp Block



20-018-1
 20-018-2
 20-018-4



Application

Cost effective connection of 40 Series profiles stacked at intersecting angles. Not recommended for linear applications. Use in pairs to accomplish proper clamping.

Technical Data

Aluminum, Clear Anodized

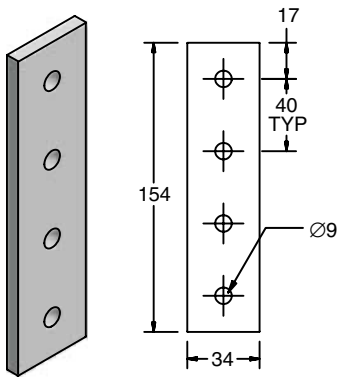
Requires the following hardware per hole:

- (1) M8x30 BHCS [24-130-8]
- (1) M8 T-Nut HD [20-064]

Ordering Information

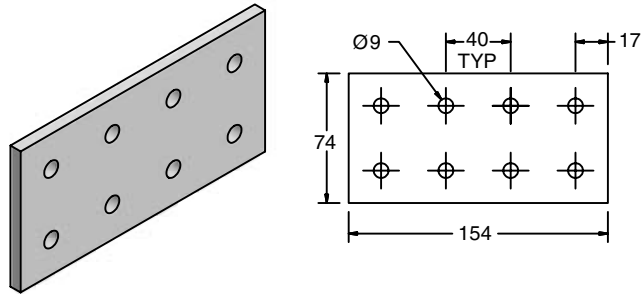
Series	Description	Unit	Weight	Part #
40	Clamp Block 1 (1 hole)	Each	0.03 kg	20-018-1
	Clamp Block 2 (2 holes)	Each	0.90 kg	20-018-2
	Clamp Block 4 (4 holes)	Each	0.17 kg	20-018-4

Straight



20-108

20-112

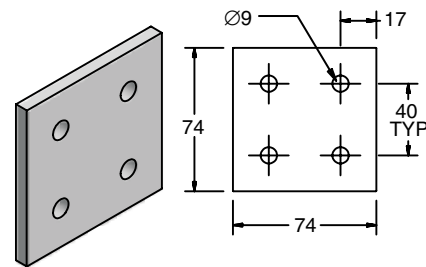


Application

Exterior joining plates for fastening profiles without servicing. Can also be used for additional strength on joints with fasteners.

Technical Data

Aluminum, Anodized,
40 Series: 6.4mm Thick
30/28 Series: 3.2mm Thick
Hole Diameter: 9mm



20-111

Recommended Fasteners (Order Separately)

40 Series

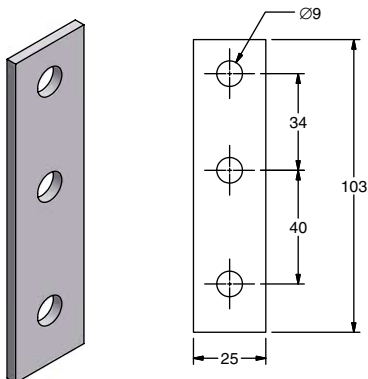
Screws M8x18 BHCS [24-118-8]
T-Nut M8 T-Nut [20-058, or Dbl 20-050]

30 Series

Screws M8x12 BHCS [24-112-8]
T-Nut M8 T-Nut [20-058, or Dbl 20-050]

28 Series

Screws M8x10 BHCS [24-110-8]
T-Nut M8 T-Nut [20-057]

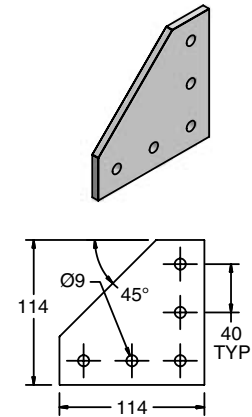
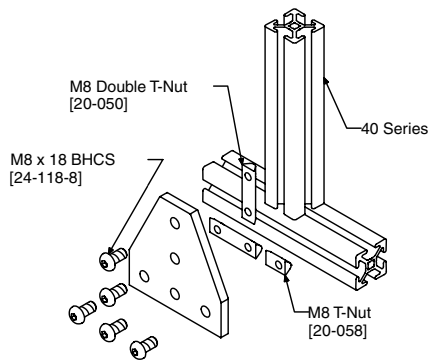
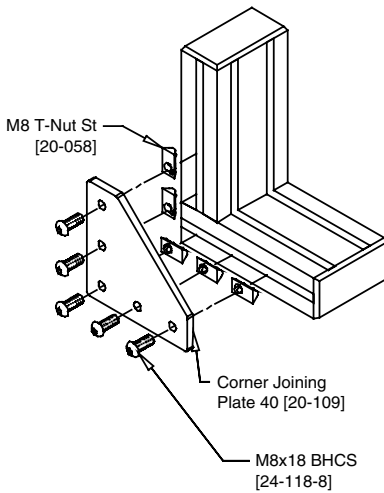


20-104

Ordering Information

Series	Description	Unit	Weight	Part #
40	Joining Plate 1, 80	Each	86 g	20-108
	Joining Plate 2, 80	Each	188 g	20-112
30/28	Joining Plate 2, 40	Each	90 g	20-111
	Joining Plate, 28-40	Each	20 g	20-104

Corner & "T"



20-109

Application

Exterior joining plates for fastening profiles without servicing. Can also be used for additional strength on joints with fasteners.

Technical Data

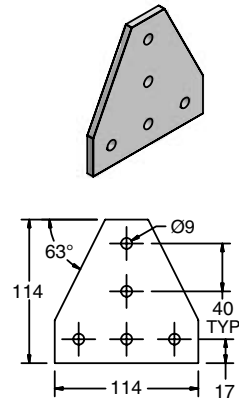
Aluminum, Anodized,
40 Series: 6.4mm Thick
30/28 Series: 3.2mm Thick
Hole Diameter: 9mm

Recommended Fasteners (Order Separately)

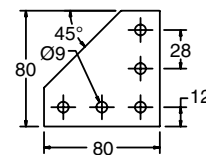
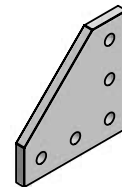
- 40 Series
 - Screws M8x18 BHCS [24-118-8]
 - T-Nut M8 T-Nut [20-058, or Dbl 20-050]
- 30 Series
 - Screws M8x12 BHCS [24-112-8]
 - T-Nut M8 T-Nut [20-058, or Dbl 20-050]
- 28 Series
 - Screws M8x10 BHCS [24-110-8]
 - T-Nut M8 T-Nut [20-057]

Ordering Information

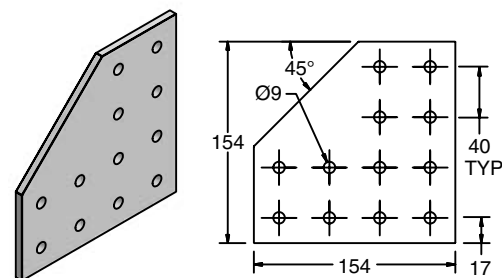
Series	Description	Unit	Weight	Part #
40	Corner Joining Plate, 40	Each	163 g	20-109
	T-Joining Plate, 40	Each	163 g	20-110
	Corner Joining Plate, 80	Each	341 g	20-113
	T-Corner Joining Plate 80	Each	341 g	20-114
30/28	Corner Joining Plate 28	Each	39 g	20-105
	T-Joining Plate 28	Each	39 g	20-106



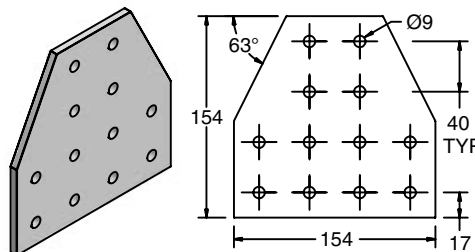
20-110



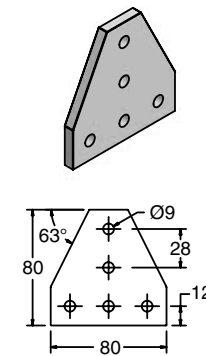
20-105



20-113



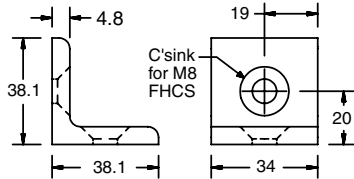
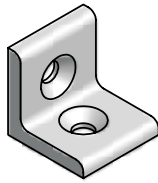
20-114



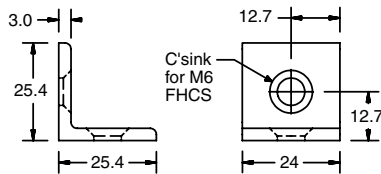
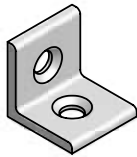
20-106

Connecting Elements

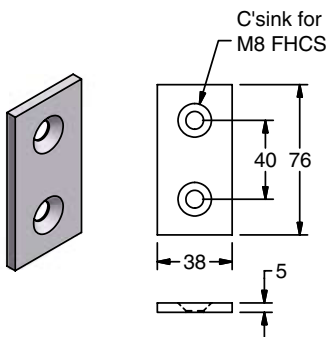
40 & 28



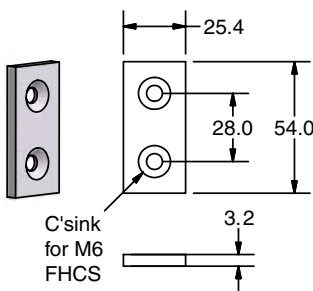
22-141



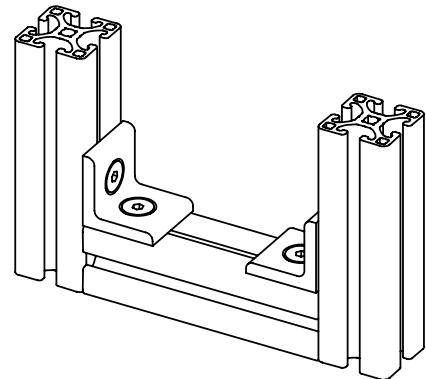
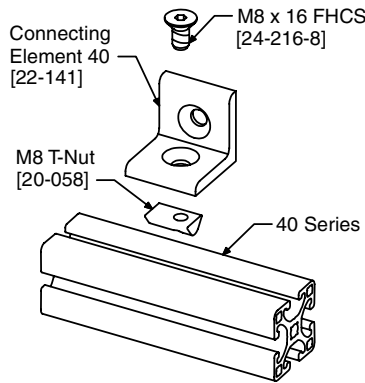
22-143



22-140



22-145



Application

Exterior connecting elements for fastening profiles without servicing. Can also be used for additional strength on joints with fasteners.

Technical Data

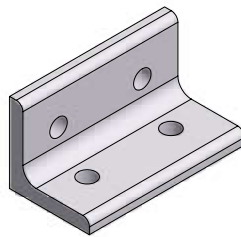
Aluminum, Anodized
 40 Series: 4.8mm Thick,
 Hole Diameter: 9mm w/c'sink
 30 & 28 Series: 3.0mm Thick
 Hole Diameter: 5.5mm w/c'sink

Recommended Fasteners (Order Separately)

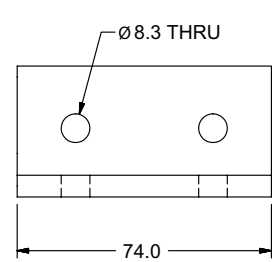
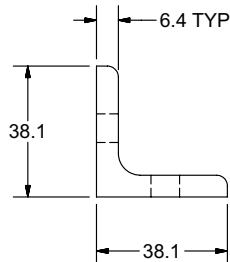
- 40 Series
 - Screws M8x16 FHCS [24-216-8] (M8x18 BHCS [24-118-8])
 - T-Nut M8 T-Nut [20-058, or Dbl 20-050] (M8 T-Nut [20-058])
- 30 Series
 - Screws M6x12 FHCS [24-212-6]
 - T-Nut M6 T-Nut [20-056]
- 28 Series
 - Screws M6x10 FHCS [24-210-6]
 - T-Nut M6 T-Nut [20-055]

Ordering Information

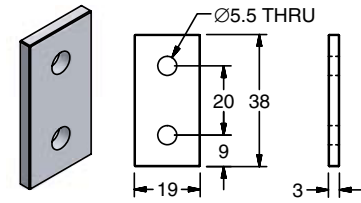
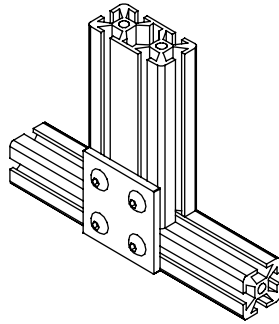
Series	Description	Unit	Weight	Part #
40	Connecting Element 40, Flat	Each	40 g	22-140
	Connecting Element 40, 90°	Each	33 g	22-141
	Fastening Set for Conn. Elements 40	Set	5 g	20-009
	Connecting Angle 40, Double	Each	100g	22-164
30, 28	Connecting Element 28, Flat	Each	33 g	22-145
	Connecting Element 28, 90°	Each	40 g	22-143



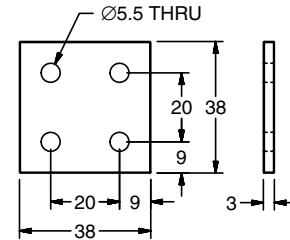
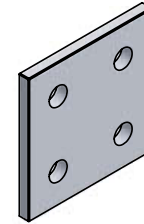
22-164



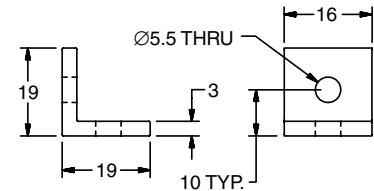
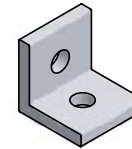
Connecting Elements 20



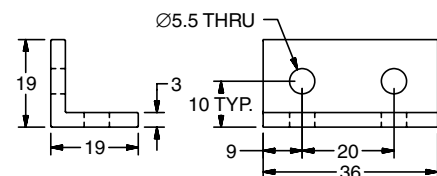
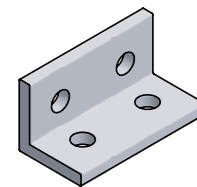
20-117



20-118



20-115



20-116

Application

Exterior connecting elements for fastening profiles without servicing. Can also be used for additional strength on joints with fasteners.

Technical Data

Aluminum, Anodized
 3.0mm Thick
 Hole Diameter: 5.5mm

Recommended Fasteners (Order Separately)

20 Series

Screws M5x8 BHCS [24-108-5]
 T-Nut M5 T-Nut [20-045]

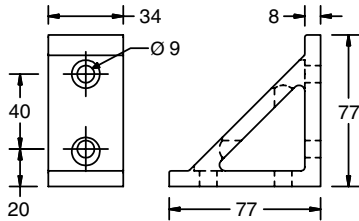
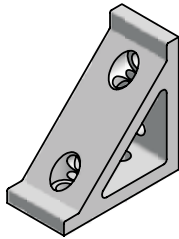
Ordering Information

Series	Description	Unit	Weight	Part #
20	Connecting Plate 20	Each	7 g	20-117
	Connecting Plate 20, Double	Each	11 g	20-118
	Connecting Angle 20	Each	5 g	20-115
	Connecting Angle 20, Double	Each	11 g	20-116

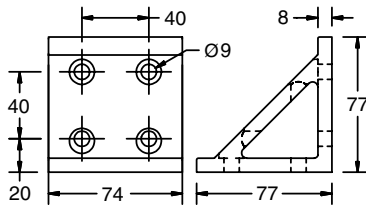
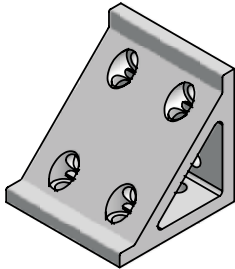
*Reference page 165 for pneumatic blank plates



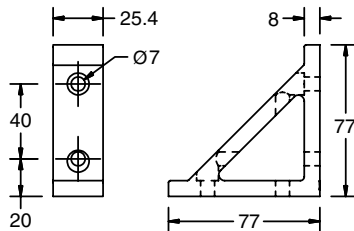
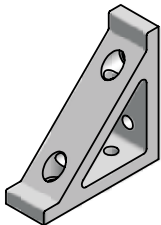
Machined Gussets



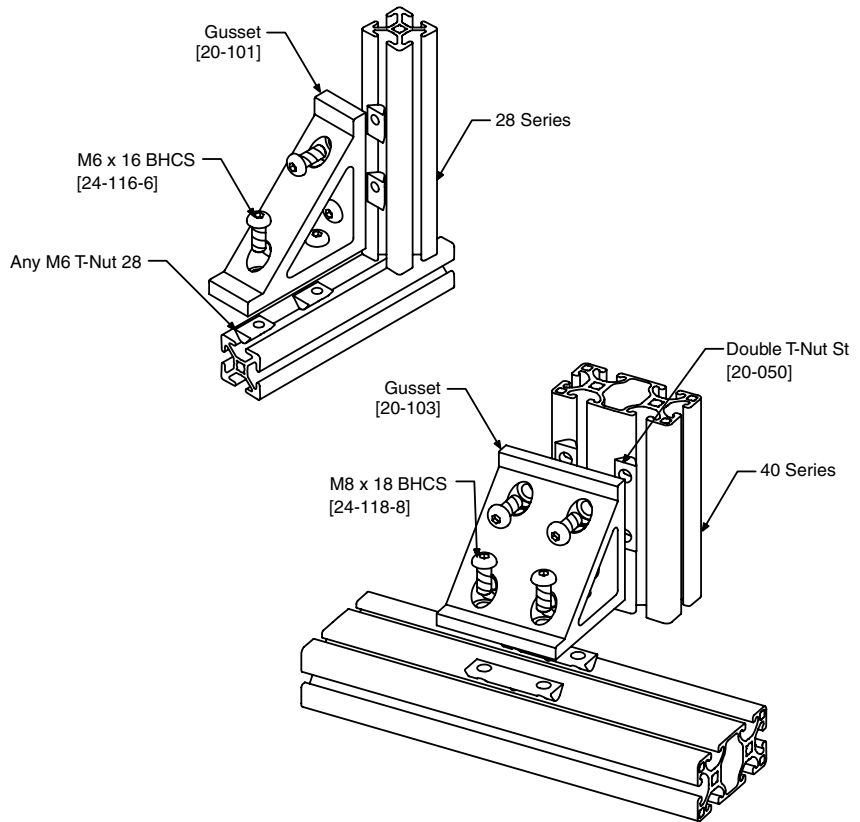
20-102



20-103



20-101



Application

Provide a high strength connection between profiles. Gussets are used to attach profiles at 90° angles without additional fasteners. Can be added to joints with fasteners to increase strength or ensure accurate right angles.

Technical Data

Aluminum, Clear Anodized
Order all hardware separately.

Recommended Fasteners (Order Separately)

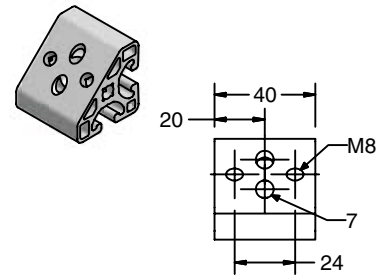
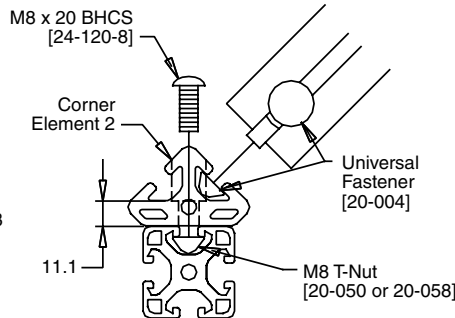
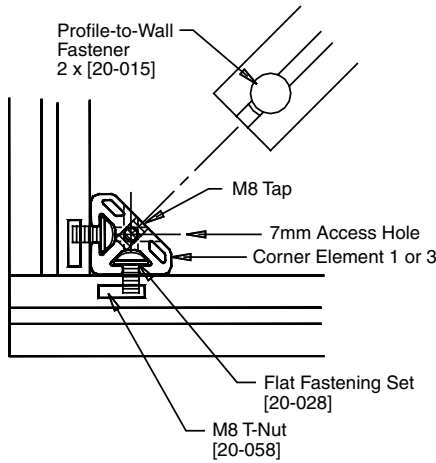
- 40 Series
 - Screws M8x18 BHCS [24-118-8]
 - T-Nut M8 T-Nut [20-058]
- 30 Series
 - Screws M6x16 BHCS [24-116-6]
 - T-Nut M6 T-Nut [20-056]
- 28 Series
 - Screws M6x16 BHCS [24-116-6]
 - T-Nut M6 T-Nut [20-055]

Ordering Information

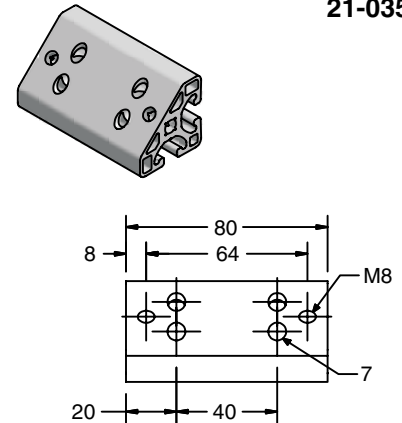
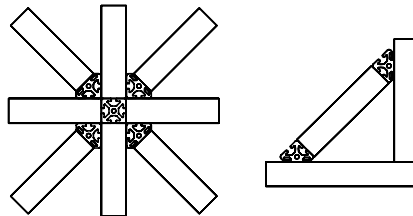
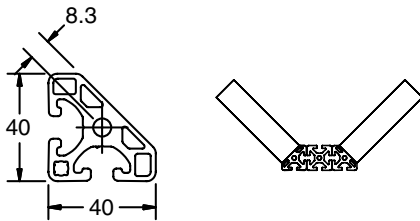
Series	Description	Unit	Weight	Part #
40	80 x 40 Gusset Bracket	Each	0.14 kg	20-102
	80 x 80 Gusset Bracket	Each	0.31 kg	20-103
30, 28	80 x 28 Gusset Bracket	Each	0.11 kg	20-101

* For Machining M8 Tap use part number 19-010 for each profile end

Corner Elements



21-035



21-036

Application

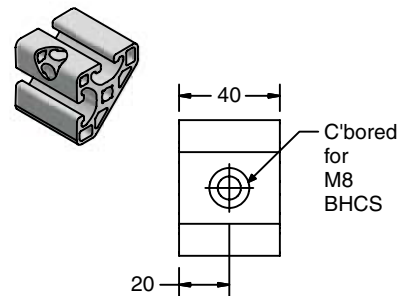
Designed for attaching profiles at 45°. Ideal for trusses, bracing and supports.

Technical Data

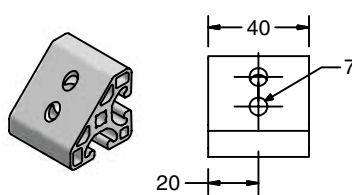
Aluminum, Clear Anodized

Ordering Information

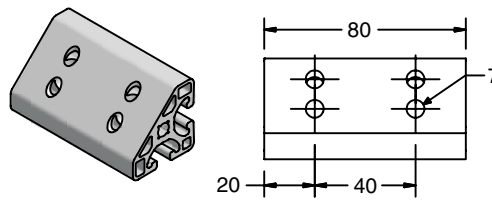
Series	Description	Unit	Weight	Part #
40	Corner Element 1, 40	Each	71 g	21-035
	Corner Element 1, 80	Each	45 g	21-036
	Corner Element 2, 40	Each	67 g	21-037
	Corner Element 2, 80	Each	133 g	21-038
	Corner Element 3, 40	Each	73 g	21-135
	Corner Element 3, 80	Each	150 g	21-136
	End Cap 40 x 40-45°	Each	6 g	18-820



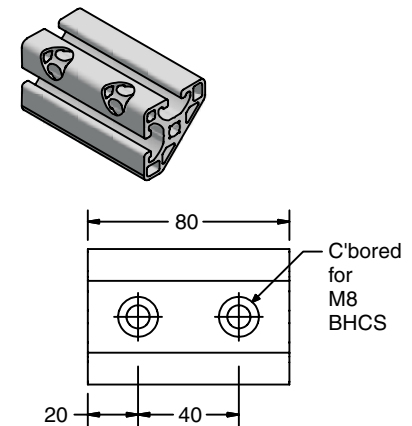
21-037



21-135

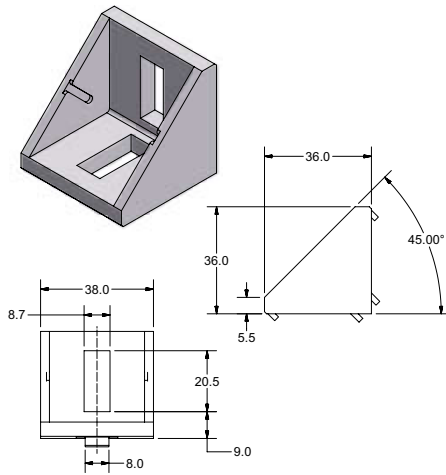


21-136

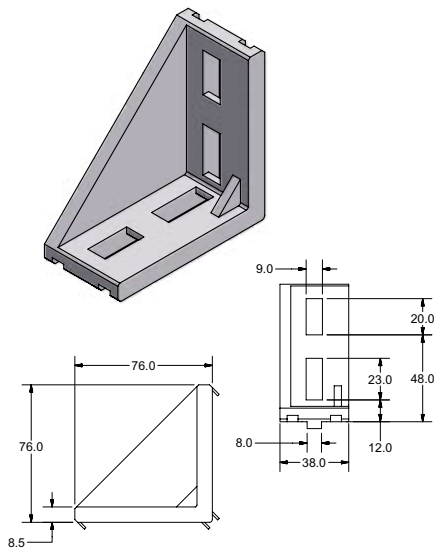


21-038

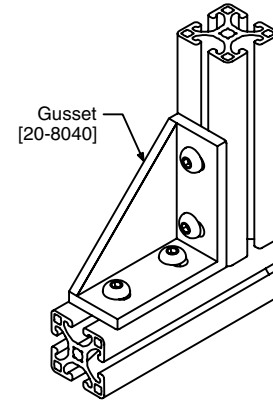
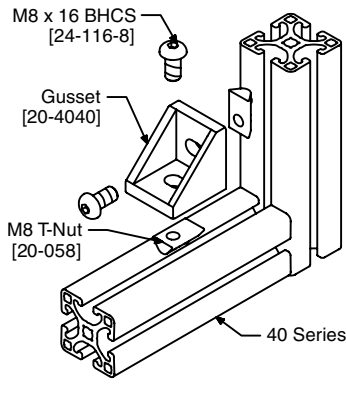
Cast Gussets



20-4040



20-8040



Application

Provide a high strength right angle connection between two profiles. These gussets can only be used for right angle connections in-line with T-slots as shown. Cast tabs help align the gussets in the center of the profile.

Technical Data

Die Cast Aluminum

Recommended Fastening Hardware (Order Separately)

20-4040

Screws M8 x 16 BHCS [24-116-8]

Types Any M8 T-nut

20-8040

Screws M8 x 18 BHCS [24-118-8]

T-Nuts Any M8 T-nut

Ordering Information

Description
Gusset 40
Gusset 80x40

Unit	Weight	Part #
Each	0.13 lb	20-4040
Each	0.30 lb	20-8040