

A compact 15mm, 3-way subbase or manifold mounted valve. Ideally suited for use in stationary or mobile equipment applications, where flow rates and low temperatures are a key consideration.

**Features**

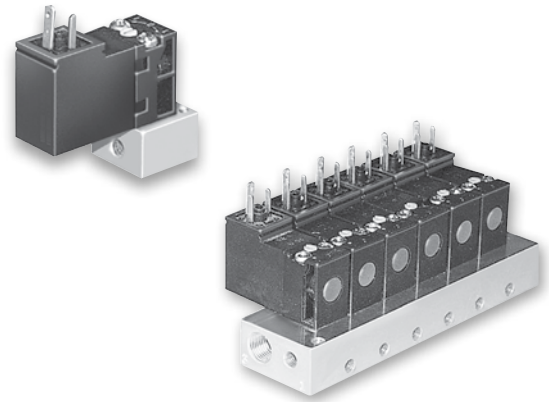
- Compact and simple design
- Utilizes 15mm solenoid operators
- Manifold allows mounting of normally open and normally closed operators simultaneously
- Up to 20 stations available

**Solenoids**

- 15mm low watt solenoids are UL certified and approved to be CE marked
- Wide range of voltages available

**Applications**

- Piloting for process control valves
  - pharmaceutical equipment
  - waste water treatment systems
  - food processing
  - chemical batching
- Industrial laundry equipment
- Paint spray & dyeing equipment
- Textile winding applications
- Vacuum and conveyor applications



**Operating information**

|                                                   |                                       |
|---------------------------------------------------|---------------------------------------|
| Operating pressure:                               | Vacuum to 145 PSIG (Vacuum to 10 bar) |
| Operating temperature:                            |                                       |
| Standard Flow:                                    | 5°F to 140°F (-15°C to 60°C)          |
| High Flow:                                        | 5°F to 122°F (-15°C to 50°C)          |
| Mobile Applications<br>(47 & 48 Voltage Options): | -40°F to 158°F (-40°C to 70°C)        |
| Storage temperature:                              |                                       |
| All applications:                                 | -40°F to 158°F (-40°C to 70°C)        |

**Material specifications**

|                      |                                                  |
|----------------------|--------------------------------------------------|
| Body                 | Glass filled polyamide                           |
| Internal metal parts | Steel                                            |
| Screws               | Steel                                            |
| Bottom plug          | Thermoplastic                                    |
| Poppet seals         | Nitrile for standard,<br>fluorocarbon for mobile |

**Technical data**

|                           |                                                                                                         |
|---------------------------|---------------------------------------------------------------------------------------------------------|
| Electrical interface per: | Din 43650 Form C (EN175301-803C)                                                                        |
| Pneumatic interface per:  | AFNOR E 0652 110 N                                                                                      |
| Protection:               | IP65 (Washdown)                                                                                         |
| Air flow:                 | Standard flow 0.033 Cv (33 Lpm)<br>(1.2W) (1.6VA)                                                       |
| Voltage tolerance:        | All voltages except 47 & 48: Rated<br>voltage +10% / -15% options 47 & 48:<br>Rated voltage +25% / -30% |

15mm Solenoid  
 XM Series  
 D Direct Acting Valve Products

Most popular. For technical information see CD

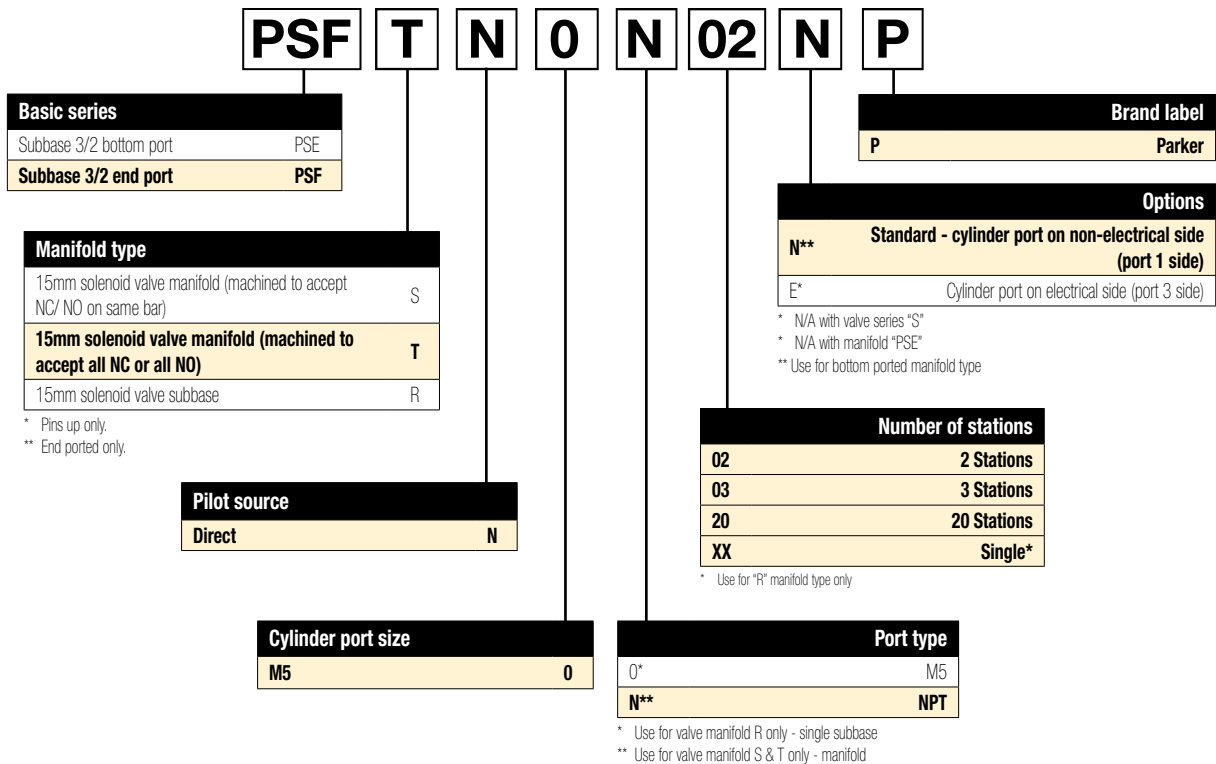


**NC (NNP) Solenoids / Kits**

|                     | ## Voltage (S = Standard, O = Optional, — = N/A) |            |            |             |             | Kit No.                                                     |
|---------------------|--------------------------------------------------|------------|------------|-------------|-------------|-------------------------------------------------------------|
|                     | 42 (24VAC)                                       | 45 (12VDC) | 49 (24VDC) | 53 (120VAC) | 57 (230VAC) |                                                             |
| * Override          |                                                  |            |            |             |             |                                                             |
| B (Non-lock, Flush) | O                                                | O          | S          | S           | O           | <b>PS2982*##P</b><br>Pins: UP<br>NC / NNP<br>1.2W / 1.6VA   |
| C (Lock, Flush)     | O                                                | O          | S          | S           | O           |                                                             |
| D (Non-lock, Ext)   | —                                                | —          | O          | O           | —           |                                                             |
| B (Non-lock, Flush) | O                                                | O          | S          | S           | —           | <b>PS3541*##P</b><br>Pins: DOWN<br>NC / NNP<br>1.8W / 2.4VA |
| C (Lock, Flush)     | O                                                | O          | S          | S           | —           |                                                             |
| D (Non-lock, Ext)   | —                                                | —          | O          | O           | —           |                                                             |
| E (Lock, Ext)       | —                                                | —          | O          | O           | —           |                                                             |
| B (Non-lock, Flush) | O                                                | O          | O          | O           | O           | <b>PS3441*##P</b><br>Pins: DOWN<br>NC / NNP<br>1.2W / 1.6VA |
| C (Lock, Flush)     | O                                                | O          | O          | O           | O           |                                                             |
| B (Non-lock, Flush) | O                                                | O          | S          | S           | —           | <b>PS3202*##P</b><br>Pins: UP<br>NO / NP<br>1.2W / 1.6VA    |

\* Override  
 ## Voltage

**Model Number Index**



15mm Solenoid  
 XM Series  
 D  
 Direct Acting Valve Products

**Examples:**

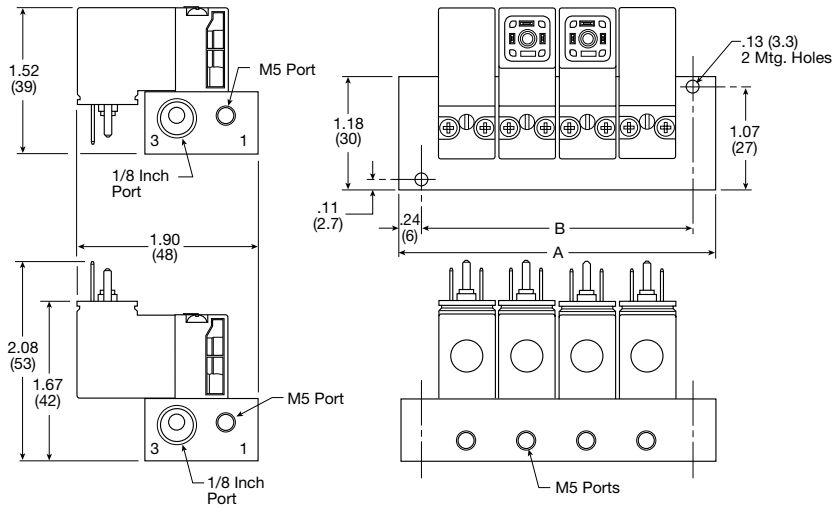
PSFTN0N16EP - End port manifold - Cyl ports and electrical on same side  
 PSESN0N10NP - Bottom port manifold - N/C and N/O can be interchanged  
 PSFTN0N10NP - End port manifold - Cyl ports and electrical are opposite

**BOLD OPTIONS ARE MOST POPULAR.**



**Manifold Dimensions**

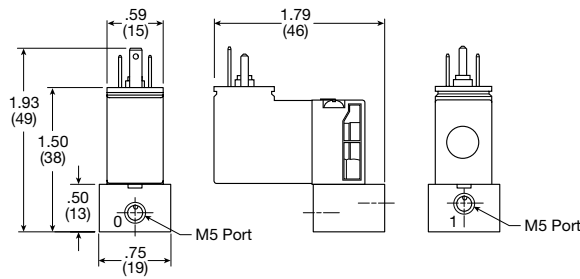
Special mounting considerations must be made for connector assembly clearance when mounting solenoid valves with pins down.



| Number of stations | Dim. A      | Dim. B      |
|--------------------|-------------|-------------|
| 2                  | 2.04 (52)   | 1.57 (40)   |
| 3                  | 2.68 (68)   | 2.20 (56)   |
| 4                  | 3.31 (84)   | 2.83 (72)   |
| 5                  | 3.94 (100)  | 3.46 (88)   |
| 6                  | 4.57 (116)  | 4.09 (104)  |
| 7                  | 5.20 (132)  | 4.72 (120)  |
| 8                  | 5.83 (148)  | 5.35 (136)  |
| 9                  | 6.46 (164)  | 5.98 (152)  |
| 10                 | 7.09 (180)  | 6.61 (168)  |
| 11                 | 7.72 (196)  | 7.24 (184)  |
| 12                 | 8.35 (212)  | 7.87 (200)  |
| 13                 | 8.98 (228)  | 8.50 (216)  |
| 14                 | 9.61 (244)  | 9.13 (232)  |
| 15                 | 10.23 (260) | 9.76 (248)  |
| 16                 | 10.87 (276) | 10.39 (264) |
| 17                 | 11.50 (292) | 11.02 (280) |
| 18                 | 12.13 (308) | 11.65 (296) |
| 19                 | 12.76 (324) | 12.28 (312) |
| 20                 | 13.39 (340) | 12.91 (328) |

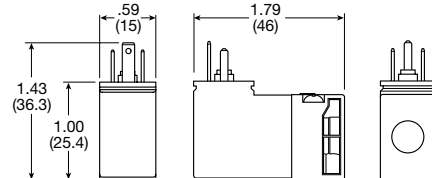
**Subbase Dimensions**

Pins up only.



**15mm Solenoid Dimensions**

Pins up only.



**Female Electrical Connectors**

**15mm 3-Pin DIN 43650C (Use with enclosure "5")**

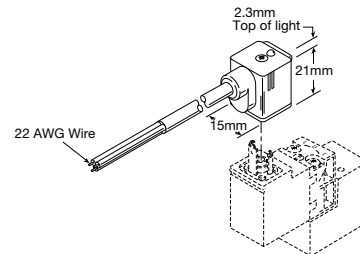
| Description                | Connector         | Connector with cord |
|----------------------------|-------------------|---------------------|
| Unlighted 18 Inches        | <b>PS2932BP</b>   | <b>PS2932HBP</b>    |
| Unlighted 6 Feet           | <b>PS2932BP</b>   | <b>PS2932JBP</b>    |
| Light - 12VAC or DC 6 Feet | <b>PS294675BP</b> | <b>PS2946J75BP*</b> |
| Light - 24VAC or DC 6 Feet | <b>PS294679BP</b> | <b>PS2946J79BP*</b> |
| Light - 110/120VAC 6 Feet  | <b>PS294683BP</b> | <b>PS2946J83BP*</b> |
| Light - 240/230VAC         | <b>PS294687BP</b> | <b>N/A</b>          |

\* LED with surge suppression.

**Note:** Max ø6.5mm cable size required for connector w/o 6' (2m) cord.  
 IP65 rated when properly installed.

**Engineering Data:**

- Conductors: 2 poles plus ground
- Cable range (Connector only): 4 to 6mm (0.16 to 0.24 Inch)
- Contact spacing: 8mm



**Molded 6' Cord Shown**



15mm Solenoid  
 XM Series  
 D Direct Acting Valve Products