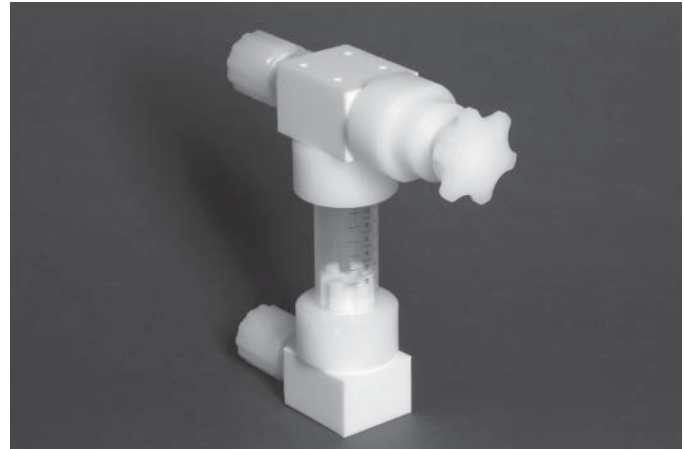


FM-4 Flowmeter

Product Overview

The PFA/PTFE Flowmeter is designed for all high purity applications where precise measurement and control of liquids are required. The FM-4 Flowmeter utilizes precision machined PTFE bodies and needle valve components and a high purity PFA barrel. Rather than typical face-to-face seals, the FM-4 utilizes compression technology to seal the barrel to the bodies, creating a more positive seal. Standard features are an integral needle valve for flow control and panel nuts for mounting.



Features

Compression barrel to body seals.

PFA barrel.

Unique PTFE float design.

Zero metal.

Benefits

Zero leakage and allows 360 degree port orientation.

PFA is most chemically compatible and its translucency makes for precise flow measurement.

Allows for consistent read out and visibility in many chemicals.

Higher resistance to deionized water and chemicals.

Specifications

Materials of Construction:

Wetted Surfaces - PFA and PTFE
External Surfaces - PTFE, PFA, PolyPro and PVDF

Pressure Ranges:

0 PSIG to 120 PSIG (8.3 bar)

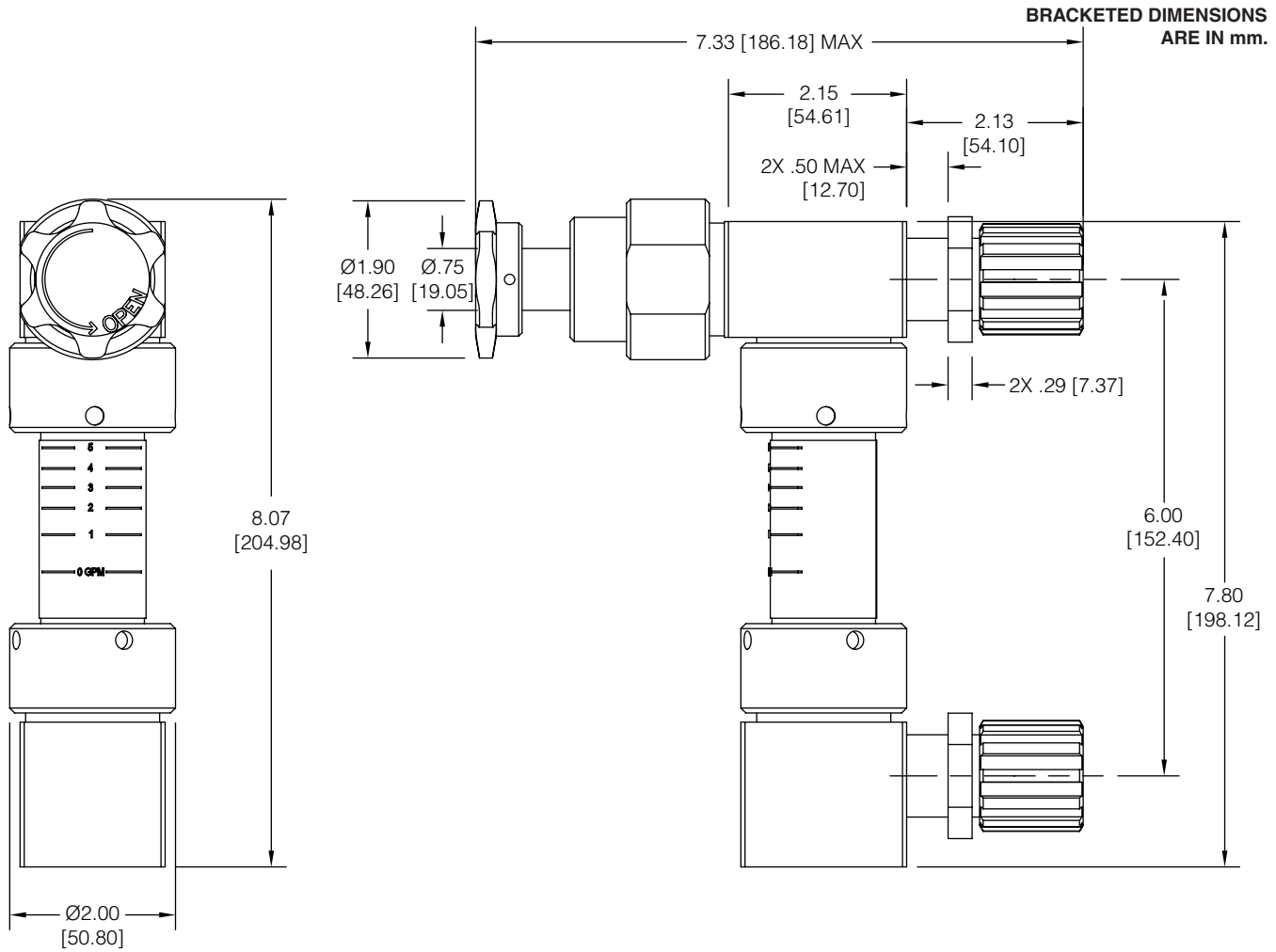
Pressure range above is for operation at ambient temperatures. For use at higher temperatures consult Pressure/Temperature chart on page 3.

Temperature Ranges:

0° - 212° F (-17° - 100° C) Ambient

0° - 266° F (-17° - 130° C) Liquid

FM-4 Flowmeter



Model Number	Needle Valve	Inlet/Outlet Connection Type	Inlet/Outlet Connection Size	Flow Range
FM-4-11661212-02G	Yes	Parflare	3/4"	2 GPM
FM-4-11661212-05G	Yes	Parflare	3/4"	5 GPM

Direct read out labels are provided for deionized water only. 0-10 read out are provided for all other chemicals.

FLOW CHARACTERISTICS

