

Pressure Protection Valve

Pressure Protection for Chassis Air Systems in the Truck and Trailer Market



Technology Innovation

Designed in close cooperation with several OEM truck manufacturer's, Parker's PPV can be utilised for multiple applications within the vehicle air system.

Typically the valve is used to insure air pressure is provided to the vehicles auxiliary air system "once" the set pressure is achieved in the primary air reservoir.

A compact pre-set valve, the PPV can easily be fitted directly into the primary reservoir outlet simplifying installation and minimising the number of connectors required.

The PPV has been designed with safety and reliability in mind and meets performance standards SAEJ1409 and SAEJ1410.



Contact Information:

Parker Hannifin Manufacturing Ltd
Pneumatic Division Europe
 The Collins Centre,
 Lichfield South, Wall Island,
 Birmingham Road, Lichfield.
 WS14 0QP United Kingdom

Phone +44 (0) 1543 483800
Fax: +44 (0) 1543 483801
www.parker.com



Product Features:

- Patented "slide-guide" design**
 Allows increased flow and quick response, increasing operational efficiency
- Protected breather orifice**
 Prevents salt & dust ingress resulting in greater reliability
- Integrated filter screen**
 Reduces the risk of downstream contamination and potential vehicle downtime
- Industry compliance**
 In accordance with SAEJ1409 & SAEJ1410

Specification:

Temperature Range: -40°C to 100°C
Operating Pressure: 10.3 Bar max

Pressure Settings:

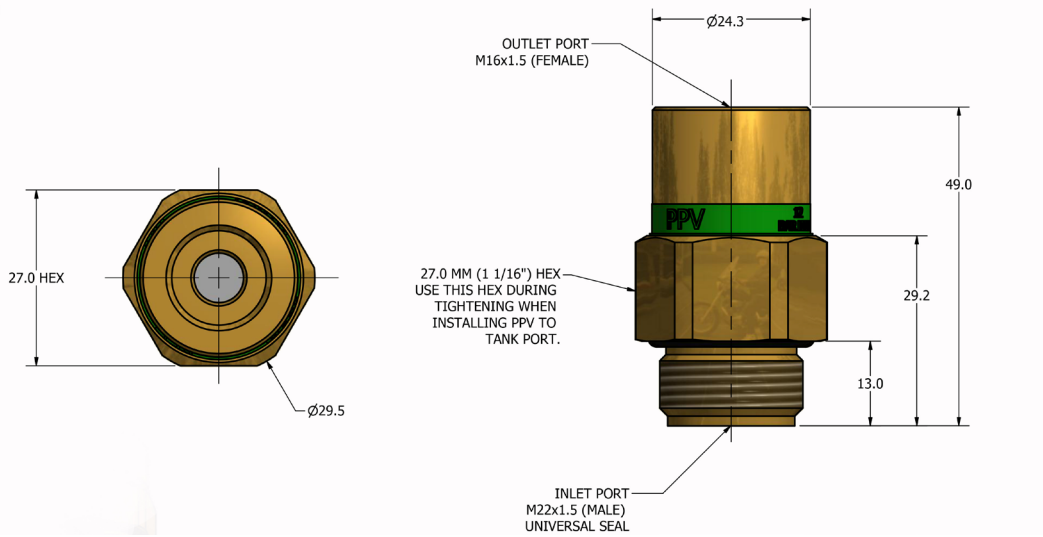
ID BAND	OPEN	CLOSE
Green	7.6 Bar (±0.7Bar)	6.3 Bar (±0.7Bar)
Red	5.9 Bar (±0.7Bar)	4.8 Bar (±0.3Bar)
Yellow	4.8 Bar (±0.5Bar)	4.1 Bar (±0.5Bar)

Inlet Port: M22 x 1.5 Male
 (direct to tank)

Outlet Port: M16 x 1.5 Female
 (to suit Prestomatic 2 & 3 fittings)

ENGINEERING YOUR SUCCESS.

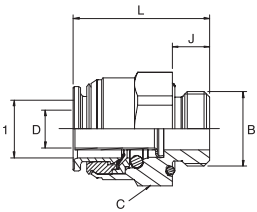
Dimensions:



Pressure Protection Valve Fitting Options

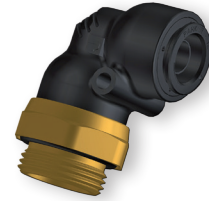
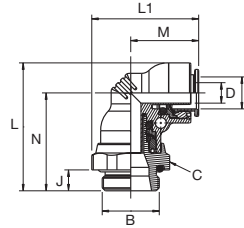
Prestomatic 2 & 3 re-usable airbrake fittings have been developed to meet the requirements of international standards including DIN74324 or DIN73378 and NF-R12632 as well as many major truck manufacturers specifications.

F8UNPMB - Male Connector - metric straight thread:



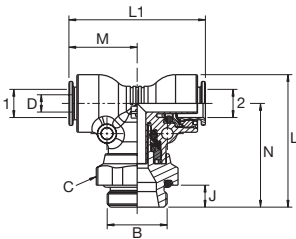
Part Number	1	B	C	J	L	D Min. Flow Dia.	Weight g.
F8UNPMB8M16	8x6	M16x1.5	22	8.0	23.1	4.5	34.4
F8UNPMB10M16	10x7.5	M16x1.5	22	8.0	28.5	6.3	42.5
F8UNPMB12M16	12x9	M16x1.5	22	8.0	29.0	7.8	47.2
F8UNPMB16M16	16x12	M16x1.5	27	8.0	30.6	9.0	58.7

C68UNPMK Adjustable 90 male elbow - metric straight thread:



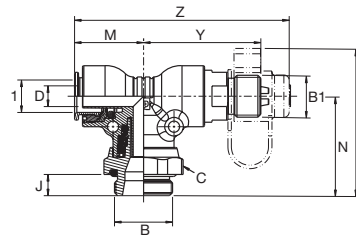
Part Number	1	B	C	J	L	L1	M	N	D Min. Flow Dia.	Weight g.
C68UNPMK8M16	8x6	M16x1.5	22	8.0	41.3	32.6	20.4	31.8	4.5	34.4
C68UNPMK10M16	10x7.5	M16x1.5	22	8.0	47.3	37.0	25.0	36.8	6.3	42.5
C68UNPMK12M16	12x9	M16x1.5	22	8.0	50.0	38.2	26.0	38.5	7.8	47.2
C68UNPMK16M16	16x12	M16x1.5	22	8.0	53.0	40.7	27.2	39.5	9.0	58.7

S68UNPMK Adjustable male branch tee - metric straight thread:



Part Number	1	2	B	C	J	L	L1	M	N	D Min. Flow Dia.	Weight g.
S68UNPMK8M16	8x6	8x6	M16x1.5	22	8.0	41.3	40.8	20.4	31.8	4.5	38.1
S68UNPMK10M16	10x7.5	10x7.5	M16x1.5	22	8.0	47.3	50.0	25.0	36.8	6.3	48.0
S68UNPMK12M16	12x9	12x9	M16x1.5	22	8.0	50.0	52.0	26.0	38.5	7.8	53.0
S68UNPMK16M16	16x12	16x12	M16x1.5	22	8.0	53.0	54.4	27.2	39.5	9.0	66.9

S68UNPMKPPAM Adjustable male branch tee - metric straight thread - inline test point:



Part Number	1	B	B1	C	J	L	M	N	Y	Z	D Min. Flow Dia.	Weight g.
S68UNPMK10PPAM16	10x7.5	M16x1.5	M16x1.5	22	8.0	56.5	26.0	38.5	44.5	80.9	6.3	63.0
S68UNPMK12PPAM16	12x9	M16x1.5	M16x1.5	22	8.0	56.5	26.0	38.5	44.5	80.9	7.8	61.0

