

General Description

The SVH101 Series, Pilot Operated, Sequence Valves are used to control the sequence of operation of two or more hydraulic actuators by assuring priority hydraulic pressure to one actuator before another.

Operation

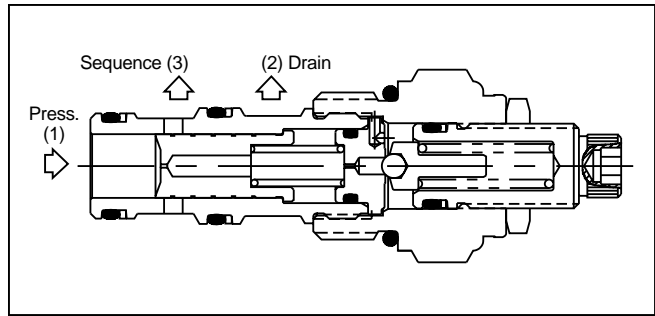
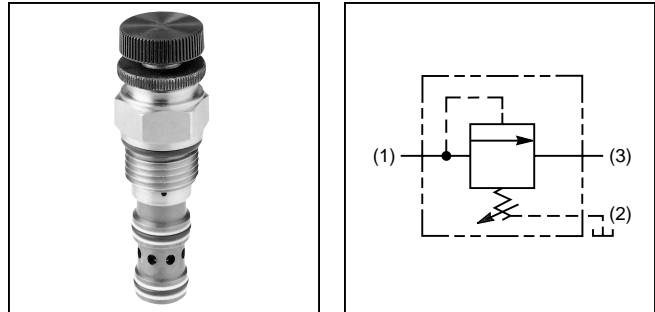
When pilot pressure exceeds the valve setting, the pilot section opens. This pilot flow creates a pressure imbalance across the main section causing the valve to open and permitting flow from inlet to sequence. By externally draining the pilot flow directly to tank the valve is insensitive to back pressure at the sequence port.

Features

- Hardened, precision ground parts for durability
- High accuracy, pilot operation design
- Ball-type pilot for added stability
- All external parts have yellow zinc dichromate. This coating allows them to withstand a 200 hour salt spray test.

Specifications

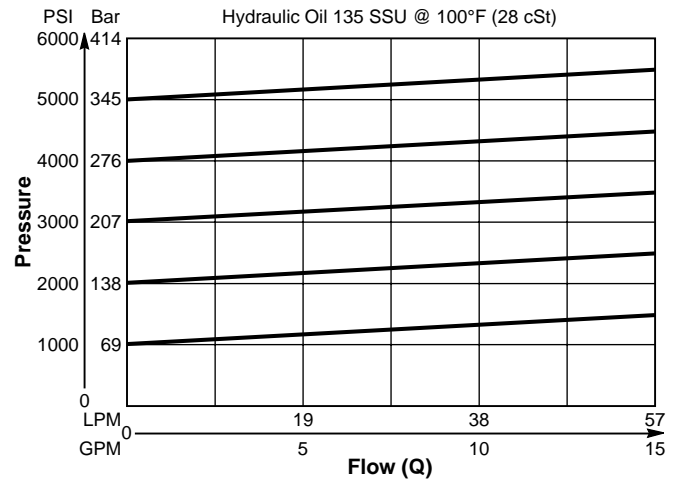
Maximum Flow	56.3 LPM (15 GPM)
Maximum Inlet Pressure	380 Bar (5500 PSI) - Steel 210 Bar (3000 PSI) - Aluminum
Maximum Setting Pressure	345 Bar (5000 PSI) - Steel 210 Bar (3000 PSI) - Aluminum
Maximum Drain Flow	.94 LPM (.25 GPM)
Reseat Pressure	80% of crack pressure
Leakage	82 cc/min.
Operating Temp. Range (Ambient)	-40°C to +93.3°C (Nitrile) (-40°F to +200°F) -31.7°C to +121.1°C (Fluorocarbon) (-25°F to +250°F)
Cartridge Material	All parts steel. All operating parts hardened steel.
Body Material	Steel or Aluminum
Filtration	ISO Code 16/13, SAE Class 4 or better
Mounting	No restrictions
Cavity	Common Cavity No. C10-3



Performance Curve

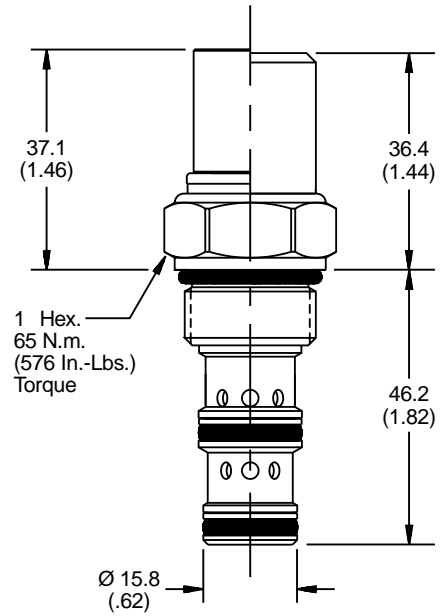
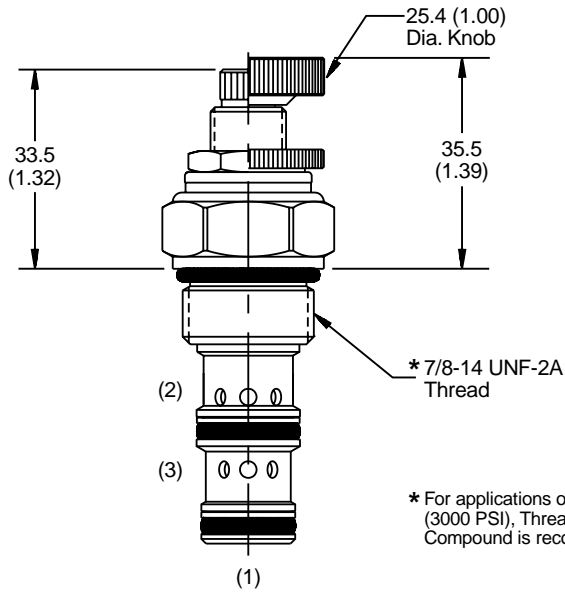
Flow vs. Inlet Pressure

(Pressure rise through cartridge only)



*Inch equivalents for millimeter dimensions are shown in (**)

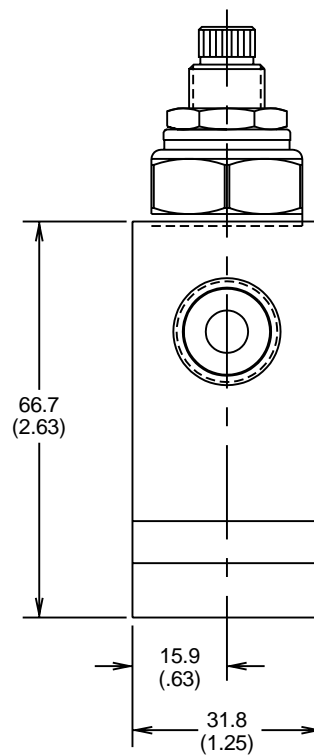
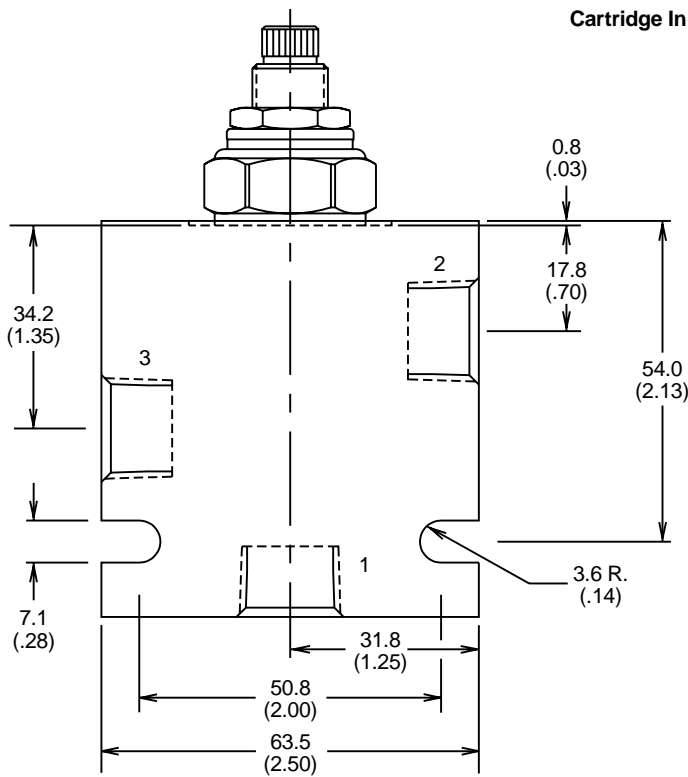
Cartridge Only



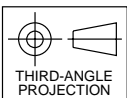
Screw/Knob Version

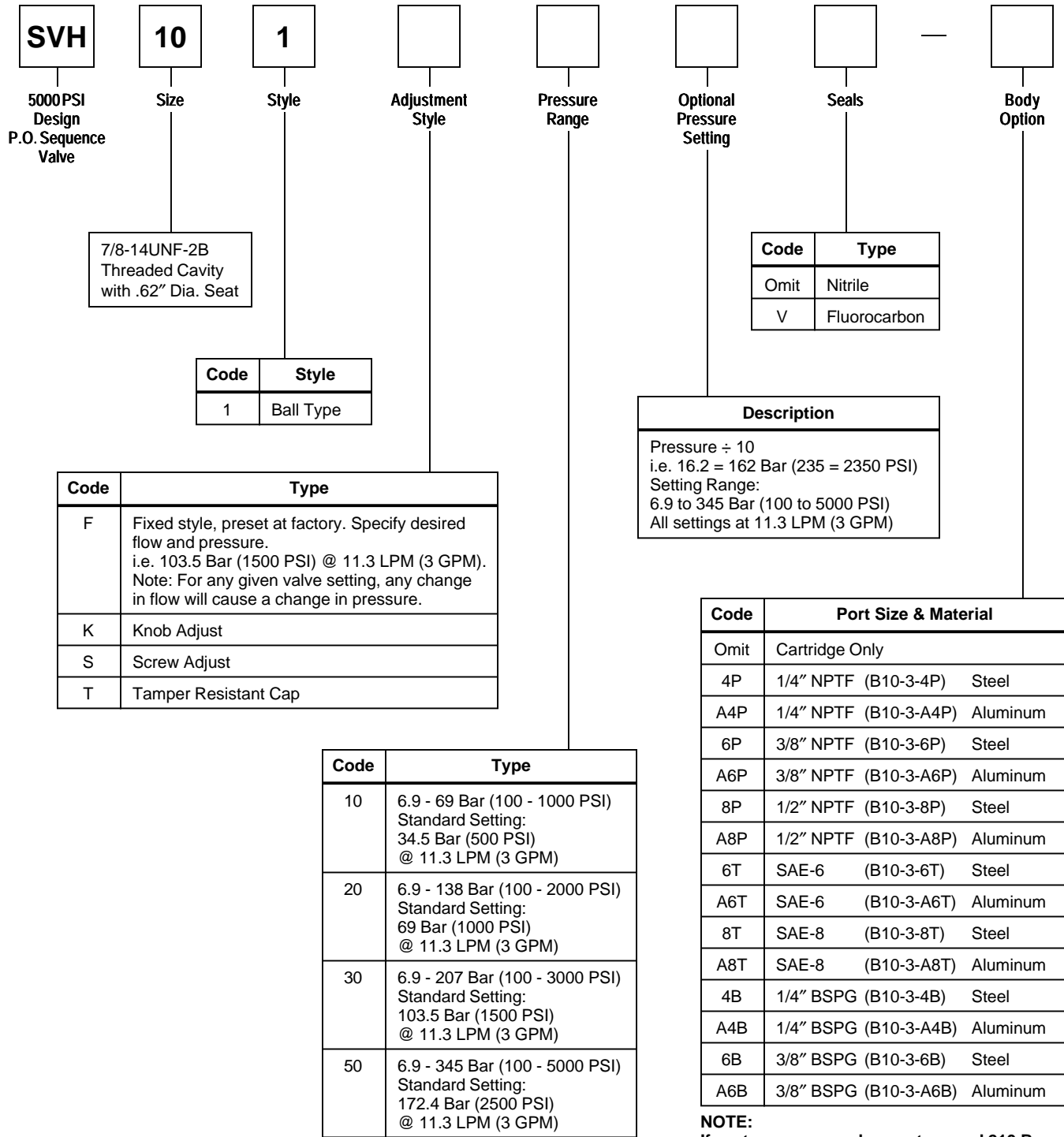
Fixed Cap/Tamper Resistant Version

Cartridge In Body



Note: Static pressure in Port 2 to be 210 Bar (3000 PSI) maximum.





NOTE:
If system pressure does not exceed 210 Bar (3000 PSI), aluminum bodies can be used. Higher pressures require steel bodies.

SERVICE PARTS
Knob Option: 852605 & 852634
(To convert screw adjust to knob adjust)
Nitrile Seal Kit: SK10-3
Fluorocarbon Seal Kit: SK10-3V

Shipping Weight
Cartridge Only .45 kg (1.0 lbs.)
Cartridge in Body 1.2 kg (2.7 lbs.)