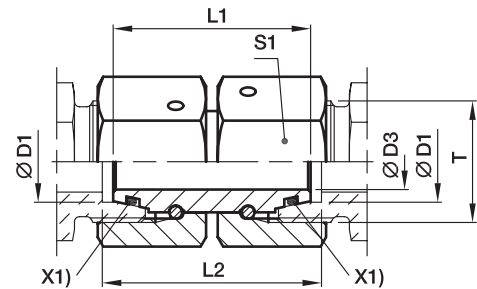


GZ Swivel union

EO 24° DKO swivel



X1) O-ring OR

Series	D1 	D3	L1	L2	S1	Weight g/1 piece	Order code*	PN (bar) ¹⁾		
								CF	A3C	71
L ³⁾	06	2.5	32	33	14	28	GZ06L	500	315	315
	08	4.0	32	33	17	41	GZ08L	500	315	315
	10	6.0	33	34	19	53	GZ10L	500	315	315
	12	8.0	33	34	22	71	GZ12L	400	315	315
	15	10.0	38	39	27	129	GZ15L	400	315	315
	18	13.0	36	38	32	165	GZ18L	400	315	315
	22	17.0	42	44	36	243	GZ22L	250	160	160
	28	22.0	46	48	41	319	GZ28L	250	160	160
	35	28.0	48	52	50	449	GZ35L	250	160	160
	42	34.0	52	57	60	737	GZ42L	250	160	160
S ⁴⁾	06	2.5	32	33	17	41	GZ06S	800	630	630
	08	4.0	33	34	19	54	GZ08S	800	630	630
	10	6.0	33	35	22	74	GZ10S	800	630	630
	12	8.0	36	38	24	95	GZ12S	630	630	630
	14	9.0	39	41	27	131	GZ14S	630	630	630
	16	11.0	39	42	30	172	GZ16S	630	400	400
	20	14.0	44	48	36	261	GZ20S	420	400	400
	25	18.0	46	53	46	477	GZ25S	420	400	400
	30	23.0	52	62	50	605	GZ30S	420	400	400
	38	30.0	52	67	60	826	GZ38S	420	315	315

¹⁾ Pressure shown = item deliverable

³⁾ L = light series; ⁴⁾ S = heavy series

$$\frac{PN \text{ (bar)}}{10} = PN \text{ (MPa)}$$

Information on ordering complete fittings or alternative sealing materials see page I7.

*Please add the **suffixes** below according to the material/surface required.

Order code suffixes			
Material	Suffix surface and material	Example	Standard sealing material (no additional suffix needed)
Steel, zinc plated, chrome ⁶⁾ -free	CF	GZ16SCF	NBR
Steel, zinc yellow plated	A3C	GZ16SA3C	NBR
Stainless Steel	71	GZ16S71	VIT