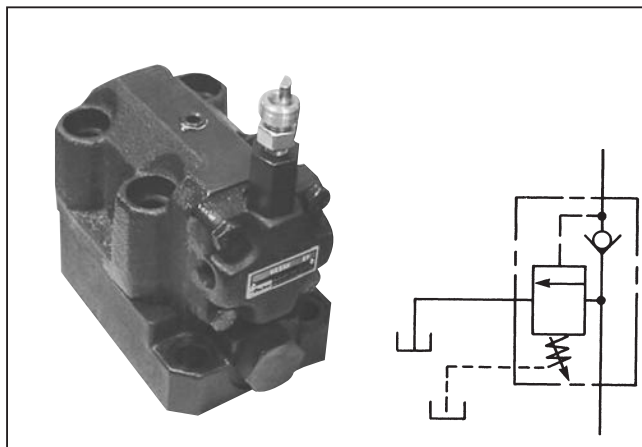


General Description

Series UR6M unloading relief valves act to limit maximum system pressure and to unload the pump at maximum pressure allowing the accumulator to maintain system pressure until pressure drops to 85 percent of maximum.

Under minimum pressure setting conditions (see Specifications), Series UR unloading relief valves function as indicated (see Performance Curves, below).

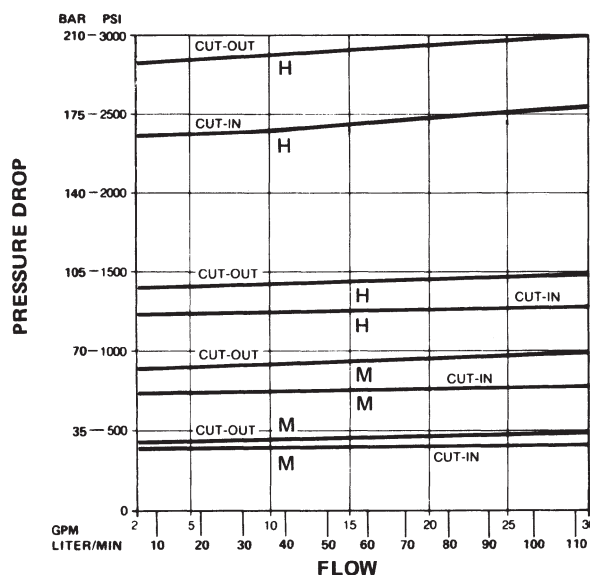


Specifications

Pressure Adjustment Range*	Code H: 55 - 205 Bar (1300 - 3000 PSI) Load/Unload PSI - 85% Code M: 10.2 - 34 Bar (150 - 500 PSI) Load/Unload PSI - 70%
Maximum Operating Pressure	205 Bar (3000 PSI)
Cracking Pressure	0.2 Bar (3 PSI) Accumulator Check Valve
Minimum Pressure Setting	113.6 LPM (30 GPM) minimum 32 cSt (150 SSU) oil and fluid temperature of 38°C (100°F) Note: Change in flow, temperature or fluid [cSt. (SSU)] rating will affect valve minimum pressure.
Flow Rate	7.6 LPM (2 GPM) Minimum
Drain Conditions	0.7 Bar (10 PSI) Maximum Pressure 1 LPM (0.3 GPM) Typical Flow
Drain Line	Must be run directly back to tank terminating below the oil level.

* See Ordering Information

Performance Curves



Cut-in / Cut-out Curves

Flow Data

Valve Model	Maximum Flow GPM (L/M)	Mounting Style	Port Size
UR6M	30 GPM (114 L/M)	Subplate	3/4 NPTF*

*Refers to subplate port size.

Ordering Information

<div style="border: 1px solid black; padding: 2px; width: 30px; margin: 0 auto;">UR</div> <p>Unloading Relief Valve</p>	<div style="border: 1px solid black; padding: 2px; width: 30px; margin: 0 auto;">6M</div> <p>Nominal Size</p>	<div style="border: 1px solid black; padding: 2px; width: 30px; margin: 0 auto;"></div> <p>Cut-out Pressure Range</p>	<div style="border: 1px solid black; padding: 2px; width: 30px; margin: 0 auto;"></div> <p>Seals</p>	<div style="border: 1px solid black; padding: 2px; width: 30px; margin: 0 auto;"></div> <p>Design Series</p>															
<table border="0"> <tr> <th style="text-align: left;">Code</th> <th style="text-align: left;">Description</th> </tr> <tr> <td>6M</td> <td>3/4" Subplate</td> </tr> </table>	Code	Description	6M	3/4" Subplate	<table border="0"> <tr> <th style="text-align: left;">Code</th> <th style="text-align: left;">Description</th> </tr> <tr> <td>H</td> <td>89.7 to 207 Bar (1300 to 3000 PSI)</td> </tr> <tr> <td>M</td> <td>27.6 to 100.1 Bar (400 to 1500 PSI)</td> </tr> </table>	Code	Description	H	89.7 to 207 Bar (1300 to 3000 PSI)	M	27.6 to 100.1 Bar (400 to 1500 PSI)	<table border="0"> <tr> <th style="text-align: left;">Code</th> <th style="text-align: left;">Description</th> </tr> <tr> <td>Omit</td> <td>Nitrile</td> </tr> <tr> <td>V</td> <td>Fluorocarbon</td> </tr> </table>	Code	Description	Omit	Nitrile	V	Fluorocarbon	<p>This section covers Design Series 10 thru 19.</p> <p>Note: Not required when ordering.</p>
Code	Description																		
6M	3/4" Subplate																		
Code	Description																		
H	89.7 to 207 Bar (1300 to 3000 PSI)																		
M	27.6 to 100.1 Bar (400 to 1500 PSI)																		
Code	Description																		
Omit	Nitrile																		
V	Fluorocarbon																		

Weight:
 UR6M 11.3 kg (25 lbs.)

Dimensions

**Unloading Relief Valve
Series UR6M**

Millimeter equivalents for inch dimensions are shown in (**)

Manifold mounted Unloading Valve

