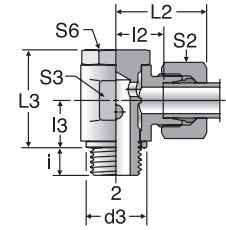


SWVE-R

Banjo Elbow
24° Flareless / BSPP



TUBE FITTING PART #	END SIZE		TORQUE N-m	d3 (mm)	i (mm)	I2 (mm)	I3 (mm)	L2 (mm)	L3 (mm)	S2 (mm)	S3 (mm)	S6 (mm)	STANDARD Pressure Rating (bar)		
	1 (mm)	2 BSPP											EO		
													CF	71	MS
SWVE04LLR	4	G 1/8 A	20	14	6.0	11.5	10	21	21.0	10	14	14	63		
SWVE06LLR	6	G 1/8 A	20	14	6.0	10.0	10	22	21.5	12	14	14	63		
SWVE08LLR	8	G 1/8 A	20	14	6.0	11.0	10	23	21.0	14	14	14	63		
SWVE06LR	6	G 1/8 A	20	14	6.0	10.5	10	25	21.0	14	14	14	160		
SWVE08LR	8	G 1/4 A	45	18	9.0	13.0	13	28	27.0	17	19	19	160		
SWVE10LR	10	G 1/4 A	45	18	9.0	14.0	13	29	27.0	19	19	19	160		
SWVE12LR	12	G 3/8 A	70	22	9.0	15.5	15	30	32.0	22	22	21	100		
SWVE15LR	15	G 1/2 A	100	26	11.0	19.0	18	34	37.5	27	27	27	100		
SWVE18LR	18	G 1/2 A	100	26	11.0	20.5	21.5	37	44.0	32	30	27	100		
SWVE22LR	22	G 3/4 A	140	32	13.0	25.5	24	42	49.0	36	36	32	100		
SWVE06SR	6	G 1/4 A	45	18	9.0	15.0	13	30	27.0	17	19	19	160		
SWVE08SR	8	G 1/4 A	45	18	9.0	15.0	13	30	27.0	19	19	19	160		
SWVE10SR	10	G 3/8 A	70	22	9.0	16.0	15	32	32.0	22	22	22	100		
SWVE12SR	12	G 3/8 A	70	22	9.0	17.0	18	33	37.0	24	24	24	100		
SWVE14SR	14	G 1/2 A	100	26	11.0	20.0	18	38	37.0	27	27	27	100		
SWVE16SR	16	G 1/2 A	100	26	11.0	21.5	21.5	40	44.0	30	30	27	100		
SWVE20SR	20	G 3/4 A	140	32	13.0	24.5	24	46	49.0	36	36	32	100		

Dimensions and pressures for reference only, subject to change.

